



August 27, 2014

RFP Number 15020  
Ketchikan Shipyard Engineering and Cost Estimating Services  
Addendum 3

This addendum is issued for informational and clarification purposes.

1. No Change: Proposals are due September 4, 2014 by 2:00 p.m. Alaska Time.
2. Please clarify the intent of utility inspections. Is an assessment of the integrity of buried pipelines included in the work, or is the scope limited to above-surface features (e.g., pipeline manifolds)?

*Answer: For purposes of the proposal the assessment of the site utilities is only for the above-surface features.*

3. We would like to request a copy of the recent underwater inspection report for the open-cell sheet pile wall around the perimeter of the shipyard.

*Answer: The 2013 inspection report is attached herein.*

4. The cutoff date for questions is August 27, 2014 at 4-pm Alaska Time.

Thank you for your interest in this work.

Very truly yours,

  
Althea S. Clapp  
Sr. Contracting Officer  
[aclapp@aidea.org](mailto:aclapp@aidea.org)



## CO004/COR007 Diving Recovery Project- Final Report

Contract# AIDEA 12-062

Date: 10/6/13

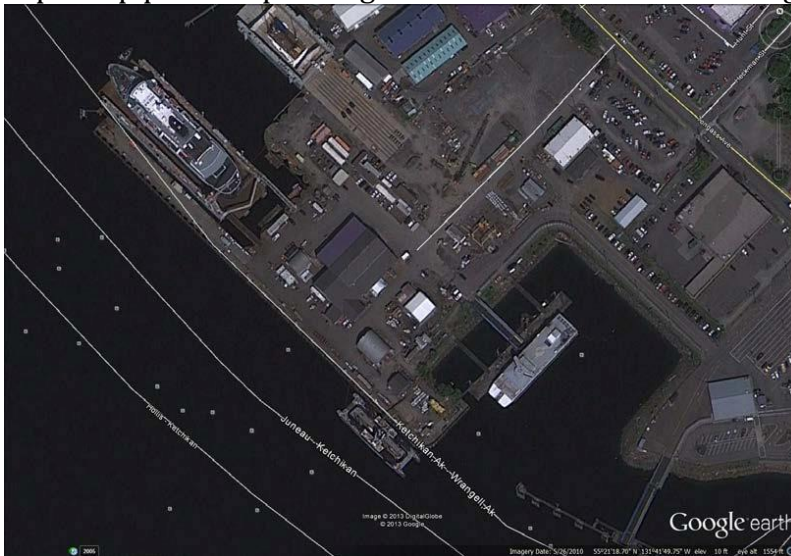
Project Title: Ketchikan Cathodic Protection Project

Location: Ketchikan, AK

Job# 1023

Reference: CO4/COR7 Diving Recovery Project

RPM, Inc. dispatched a four (4) man dive team and equipment from October 2<sup>nd</sup> to 5<sup>th</sup> of 2013, at the Ketchikan ship yard to conduct diving recovery operations as outlined in CO004/COR007. Job scope was to pick up paint chips along the sea wall hand size and larger.



Diving operations were conducted during the low tides to optimize bottom times. Average depths were 35 feet. Surface supplied shallow water air package was utilized. Diver umbilical was approximately 400 feet and was fixed with communications and video. 4ea. No decompression dives were conducted during this period.

Dives 1-4 Dives began at cell 1 and ended at cell 15. It was found that paint chips were sporadic and there were a few concentrated areas. Divers worked their way along the sea wall picking up paint chips within 5 to 10 feet off the wall. During this dive RPM, Inc. visually inspected the sea wall and transition into the natural bottom at the request of the Dock Master Greg Howe.

No major structural anomalies were found and the sea wall appeared to be in good condition. There were some areas of missing paint. See Fig.1 & Fig.5

Anodes were in good condition and showed signs of depletion indicating they were doing their job.

Divers recovered 280 pounds of paint chips. This debris was disposed of at the Ketchikan land fill.

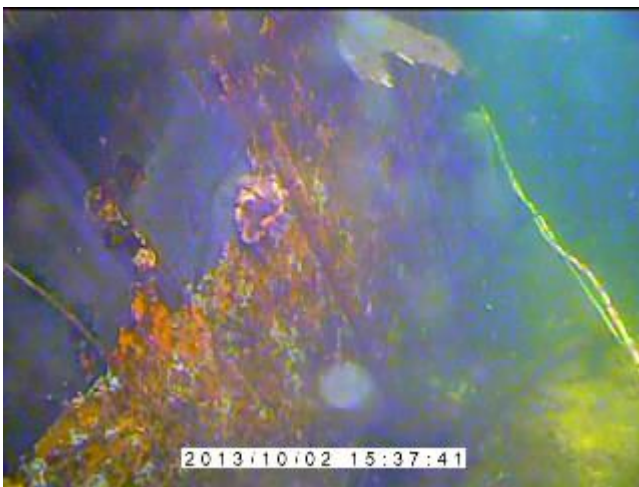


Fig.1 Typical Sea wall missing paint



Fig.2 Typical Anode



Fig.3 Typical Anode Depletion



Fig.4



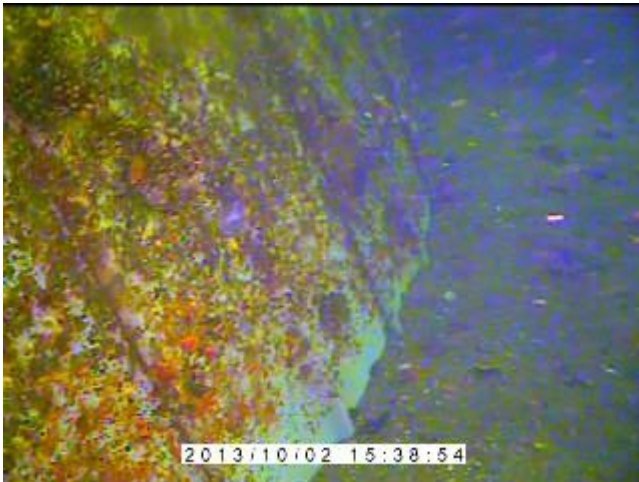


Fig.5 Typical Sea Wall To Sea Floor



Fig.6 Typical Bottom Debris



Fig.7 Paint Debris before Cleaning



Fig.8 Same Area after Cleaning



Fig.9 Clean Up in progress



Fig.10 Clean up basket

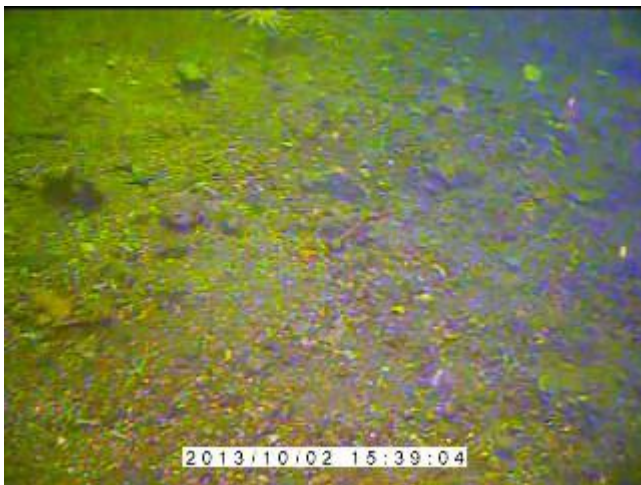


Fig.11 Typical bottom no paint chips

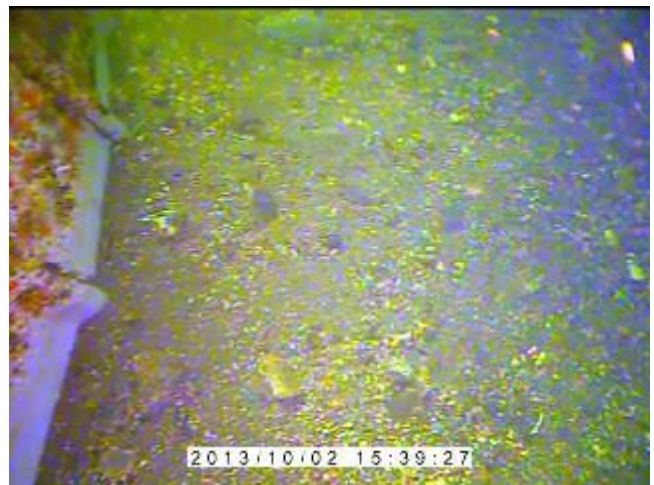


Fig.12 Typical bottom near Sea Wall

If you have any questions feel free to contact me at our office.

Kurt A. Ward  
Operations Manager  
RPM, Inc.