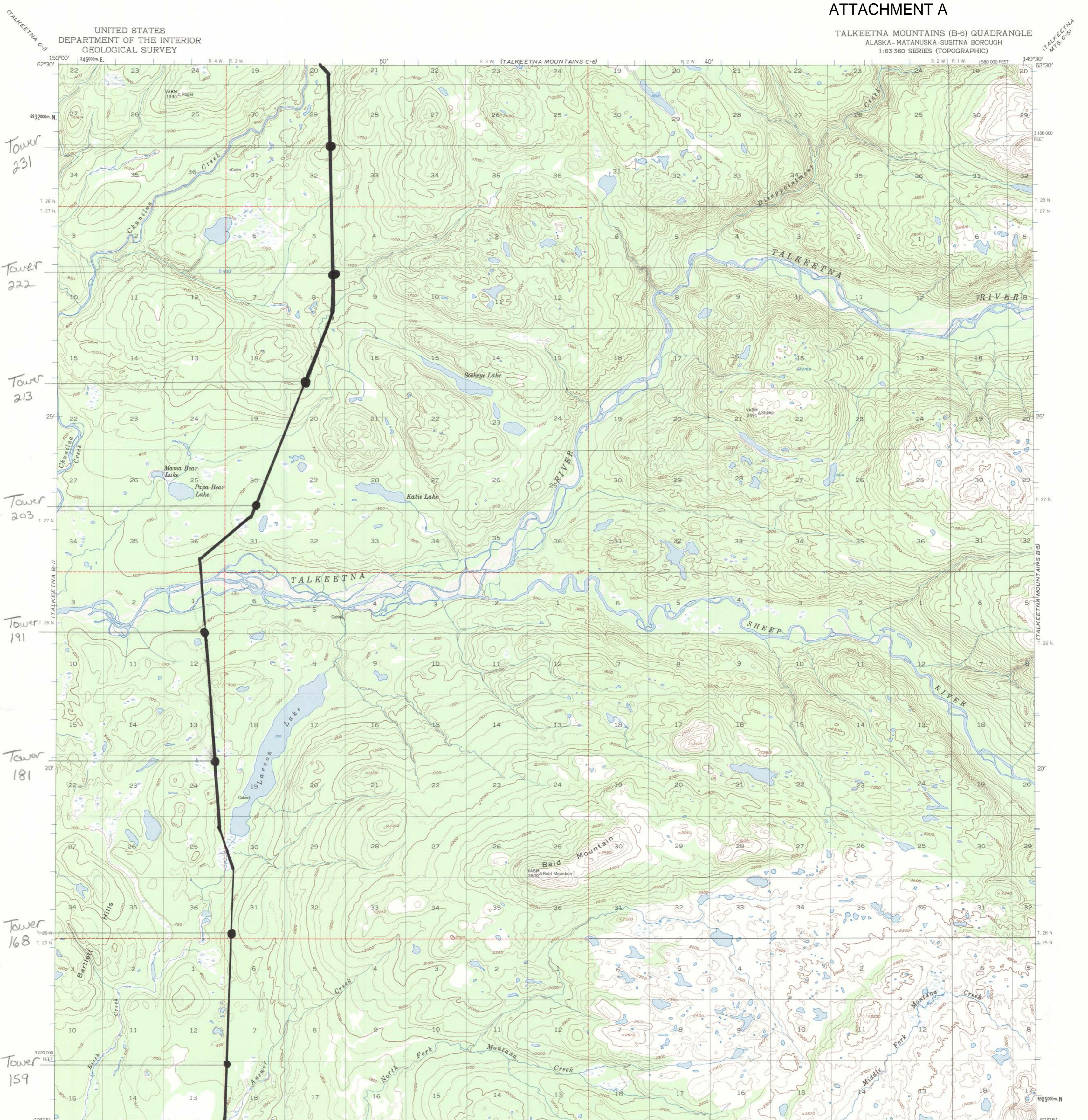


UNITED STATES
DEPARTMENT OF THE INTERIOR
GEOLOGICAL SURVEY

TALKEETNA MOUNTAINS (B-6) QUADRANGLE
ALASKA - MATANUSKA-SUSITNA BOROUGH
1:63 360 SERIES (TOPOGRAPHIC)



Tower 231
Tower 222
Tower 213
Tower 203
Tower 191
Tower 181
Tower 168
Tower 159

MATCH
Line # 3

Mapped, edited, and published by the Geological Survey
Control by USGS and NOS/NOAA
Topography by photogrammetric methods from aerial
photographs taken 1949. Map not field checked
Universal Transverse Mercator projection, 1927 North American datum,
10,000-foot grid based on Alaska coordinate system, zone 4
1000-metre Universal Transverse Mercator grid ticks,
zone 6, shown in blue
Gray land lines represent unsurveyed and unmarked locations
predetermined by the Bureau of Land Management.
Folio S-2, Seward Meridian
Swamps as portrayed, indicate only the wetter areas,
usually of low relief, as interpreted from aerial photographs



CONTOUR INTERVAL 100 FEET
DASHED LINES REPRESENT 50 FOOT CONTOURS
NATIONAL GEODETIC VERTICAL DATUM OF 1929



ROAD CLASSIFICATION
No roads or trails in this area

FOR SALE BY U. S. GEOLOGICAL SURVEY
FAIRBANKS, ALASKA 99701, DENVER, COLORADO 80225, OR RESTON, VIRGINIA 22092
A FOLDER DESCRIBING TOPOGRAPHIC MAPS AND SYMBOLS IS AVAILABLE ON REQUEST

TALKEETNA MOUNTAINS (B-6), ALASKA
N6215-W14930/15X30
1949
MINOR REVISIONS 1973

INTOTIE
SHEET #4