



P.O. BOX 92946
ANCHORAGE, ALASKA 99509
907/360-0985
LICENSE # 102525

AIDEA PARKING IMPROVEMENTS
813 W. NORTHERN LIGHTS BLVD.

LOT 1A, BLOCK 3, SUNBEAM; LOT 3, WOODS; AND LOT 3, CG BURNETT SUBD.

REVISION	DATE	DESCRIPTION	BY
10	7/28/2023	UPDATES PER BID QUESTIONS	MAB

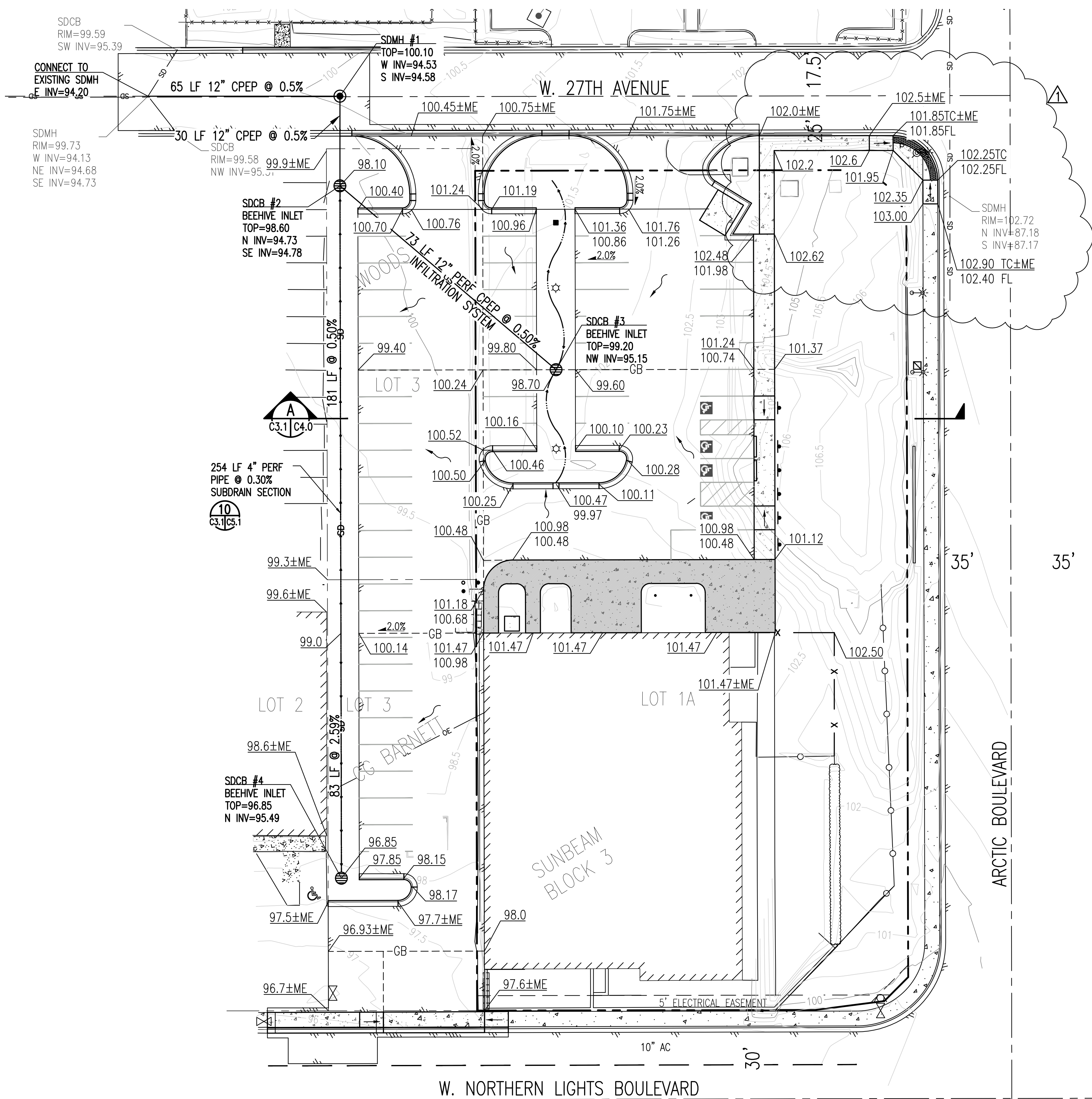
DATE	10.7.2022
PN	TBA
GRID	SW1529
SCALE	AS SHOWN
ENGINEER	MAB
DRAFTER	MAB

SHEET TITLE
SITE GRADING AND DRAINAGE PLAN

SHEET NUMBER
C3.1
4 OF 8

STORM DRAIN NOTES

- SD1. STORM DRAIN PIPE SHALL BE CORRUGATED POLYETHYLENE PIPE (CPEP), DUAL WALLED (TYPE S) UNLESS NOTED OTHERWISE.
- SD2. STORM DRAIN CONSTRUCTION SHALL BE IN ACCORDANCE WITH THE PIPE MANUFACTURER'S RECOMMENDATIONS AND ASTM D2321-84, WITH PROPER PLACEMENT AND COMPACTION OF BEDDING, HAUNCHING, AND BACKFILL.
- SD3. PROVIDE A MINIMUM OF 4 FEET OF COVER MEASURED FROM GROUND SURFACE TO TOP OF PIPE. INSTALL 2-INCH THICK X 4-FOOT WIDE RIGID INSULATION CENTERED OVER THE PIPE.
- SD4. ALL INSULATION SHALL BE INSULFOAM (60 PSI) R-TECH VII OR APPROVED EQUAL, MEETING MASS REQUIREMENTS FOR UNDERGROUND INSTALLATIONS.
- SD5. INSTALL LOCATOR TAPE THREE FEET BELOW FINISH GRADE OR TWO FEET DEEP IN STREET STRUCTURAL SECTION PER MASS 20.13.3.E.
- SD6. STORM DRAIN STRUCTURES SHALL BE TYPE I MANHOLES WITH STANDARD COVER PER MASS DETAILS 55-4 (TYPE I MANHOLE), AND 55-8 (STORM DRAIN TOP INTAKE COVER).
- SD7. STORMCEPTOR SHALL BE MODEL STC 450i. SEE D&S CONCRETE (349-6031) AND WWW.STORMCEPTOR.COM.



SITE GRADING AND DRAINAGE PLAN
SCALE: 1" = 20'

