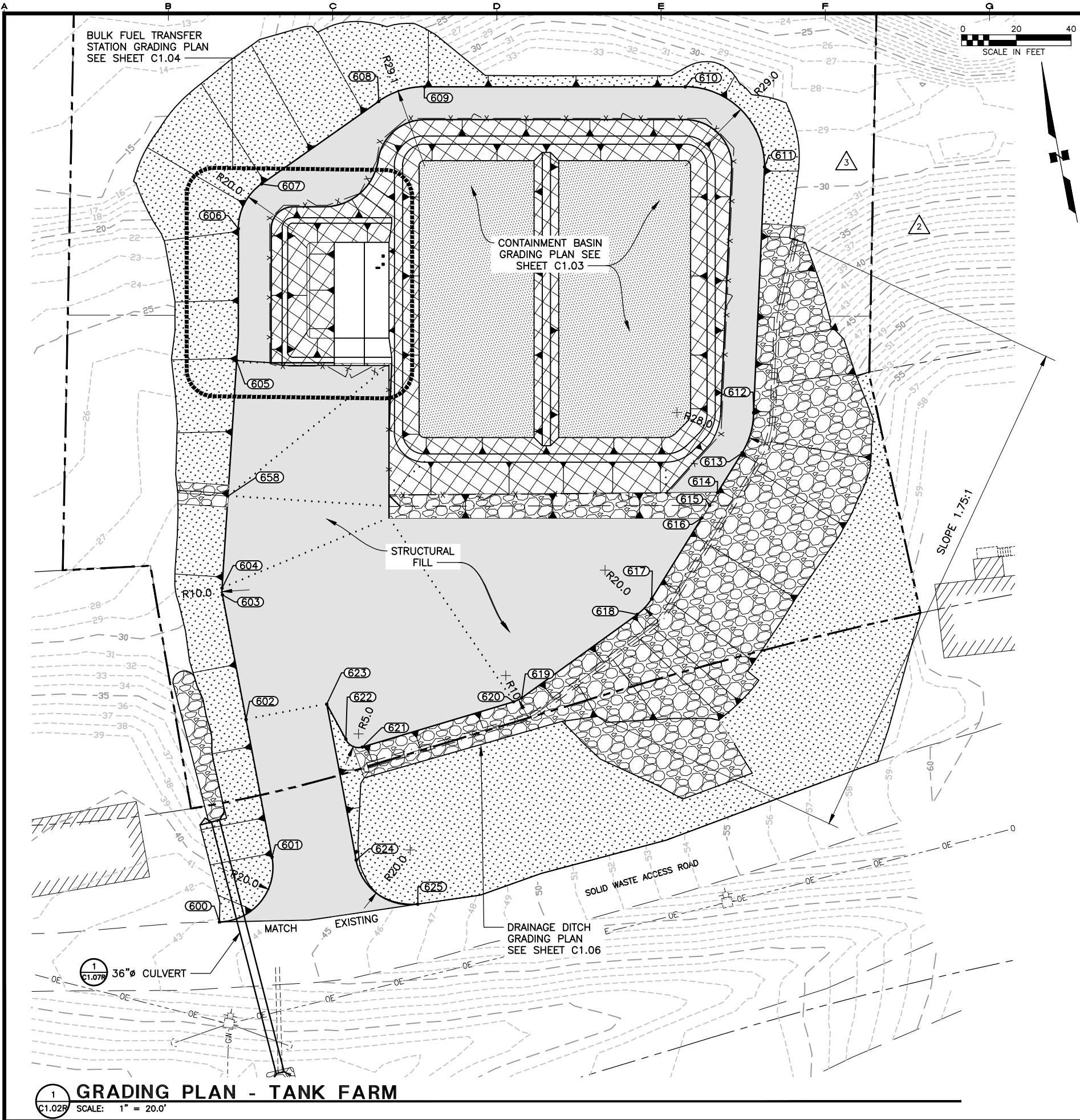


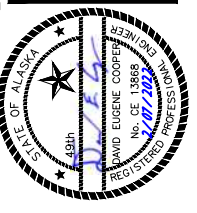
LAYOUT C1.02  
 DATE TIME 3/7/2024 11:03 AM  
 DRAWING LOCATION H:\Jobs\20-017 Scammon Bay Bfu Ph 1 and 2 (AEA)\CAD\Drawings\20-017\_04\_site-grade.dwg KKRNEGAY



- NOTES:**
1. SEE SHEET G1.02 AND G1.03 FOR GENERAL NOTES, ABBREVIATIONS, AND LEGEND.
  2. INSTALL EROSION CONTROL MEASURES IN ACCORDANCE WITH PROJECT MANUAL.
  3. SEE SURVEY CONTROL SHEET G1.07 FOR BASIS ON CONTROL.
  4. ALL SIDE SLOPES 2:1 UNLESS OTHERWISE NOTED.

GRADING PLAN POINTS				
Point #	Northing	Easting	Elevation	Description
600	60065.68	39633.39	43.3	EXISTING ROAD / DRIVEWAY / PC
601	60085.40	39656.68	42.6	DRIVEWAY / PT
602	60136.63	39656.68	40.0	DRIVEWAY EDGE
603	60182.95	39656.68	37.5	DRIVEWAY EDGE / PC
604	60185.43	39656.99	37.5	DRIVEWAY EDGE / PT
605	60266.18	39677.71	38.0	DRIVEWAY EDGE
606	60313.42	39687.25	35.8	ACCESS ROAD / PC
607	60327.90	39698.62	35.8	ACCESS ROAD / PT
608	60349.59	39746.26	35.8	ACCESS ROAD / PC
609	60351.72	39763.69	35.8	ACCESS ROAD / PT
610	60334.03	39857.28	35.8	ACCESS ROAD / PC
611	60299.85	39880.33	35.8	ACCESS ROAD / PT
612	60212.39	39859.73	38.3	ACCESS ROAD / PC
613	60198.68	39852.87	38.3	ACCESS ROAD / PT
614	60186.07	39841.32	38.1	TOP OF SWALE
615	60182.06	39837.65	37.6	BOTTOM OF SWALE
616	60178.06	39833.98	38.5	TOP OF SWALE
617	60152.36	39810.45	40.0	GRAVEL PAD EDGE / PC
618	60147.76	39804.19	40.2	GRAVEL PAD EDGE / PT
619	60125.69	39757.14	40.5	GRAVEL EDGE / PC
620	60124.80	39753.93	40.5	GRAVEL EDGE / PT
621	60118.81	39696.58	42.0	GRAVEL EDGE / PC
622	60122.78	39691.16	42.0	GRAVEL EDGE / PT
623	60136.63	39686.68	40.0	DRIVEWAY
624	60078.63	39686.68	43.6	DRIVEWAY / PC
625	60058.65	39705.80	46.5	DRIVEWAY / PT / EXISTING ROAD
658	60218.08	39665.37	36.0	END SWALE

REVISIONS	DATE	DESCRIPTION
1	11/28/23	INITIAL FILL LIMITS, HATCH
2	03/05/24	UPDATES EXISTING CONTOURS



**HDL ENGINEERING Consultants LLC**  
 civil - geotechnical - surveying - environmental - material testing  
 ANCHORAGE  
 907.564.2120  
 MAT-SU  
 907.746.5230  
 3335 Arctic Boulevard, Suite 100 Anchorage, AK 99503  
 www.HDLalaska.com  
 AECL861

SCAMMON BAY BULK FUEL UPGRADES

**ALASKA ENERGY AUTHORITY**

SCAMMON BAY, ALASKA

SHEET TITLE  
 SITE GRADING PLAN

SHEET  
**C1.02R**

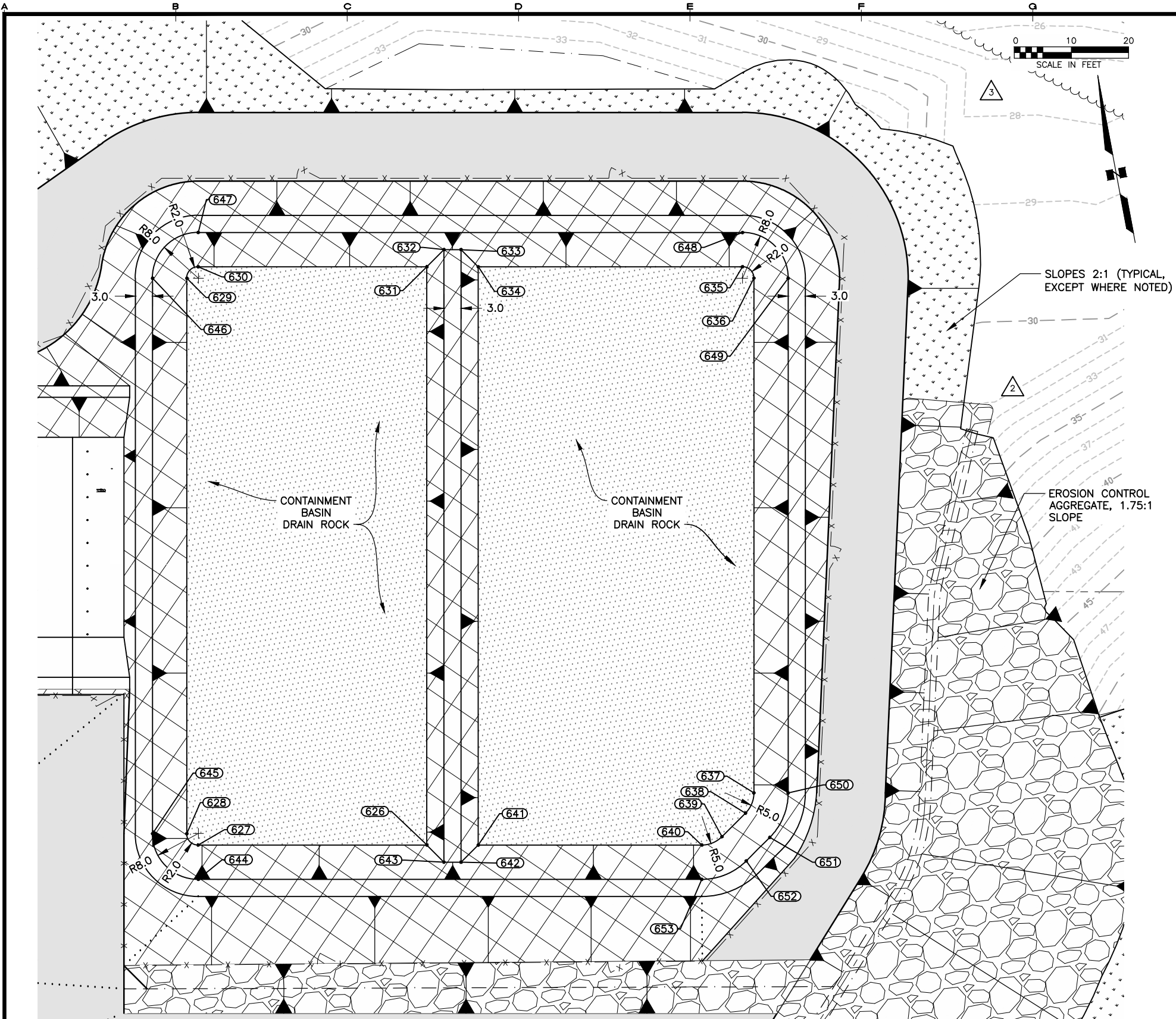
DRAWN BY: **KK** CHECKED BY: **DEC**

DATE: **01/31/22** SCALE: **AS SHOWN**

JOB NUMBER: **20-017**

**1 GRADING PLAN - TANK FARM**  
 C1.02R SCALE: 1" = 20.0'

DRAWING LOCATION: H:\Jobs\20-017 Scammon Bay Bfu Ph 1 and 2 (AEA)\CAD\Drawings\20-017\_04\_site-grade.dwg KKRNEGAY  
DATE TIME: 3/7/2024 11:03 AM  
LAYOUT: C1.03

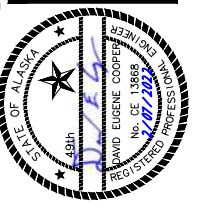


- NOTES:**
- SEE SHEET G1.02 AND G1.03 FOR GENERAL NOTES, ABBREVIATIONS, AND LEGEND.
  - INSTALL EROSION CONTROL MEASURES IN ACCORDANCE WITH PROJECT MANUAL.
  - SEE SURVEY CONTROL SHEET G1.07 FOR BASIS ON CONTROL.
  - ALL SIDE SLOPES 2:1 UNLESS OTHERWISE NOTED.

GRADING PLAN POINTS				
Point #	Northing	Easting	Elevation	Description
626	60218.34	39779.19	36.5	BOTTOM OF CONTAINMENT DIKE
627	60225.77	39739.89	36.5	BOTTOM OF CONTAINMENT DIKE
628	60228.10	39738.29	36.5	BOTTOM OF CONTAINMENT DIKE
629	60323.60	39756.34	36.5	BOTTOM OF CONTAINMENT DIKE
630	60325.19	39758.68	36.5	BOTTOM OF CONTAINMENT DIKE
631	60317.76	39797.98	36.5	BOTTOM OF CONTAINMENT DIKE
632	60320.15	39801.49	38.0	TOP INTERMEDIATE DIKE
633	60319.59	39804.44	38.0	TOP INTERMEDIATE DIKE
634	60316.09	39806.83	36.5	BOTTOM OF CONTAINMENT DIKE
635	60307.50	39852.26	36.5	BOTTOM OF CONTAINMENT DIKE
636	60305.16	39853.86	36.5	BOTTOM OF CONTAINMENT DIKE
637	60216.66	39837.13	36.5	BOTTOM OF CONTAINMENT DIKE
638	60213.46	39835.03	36.5	BOTTOM OF CONTAINMENT DIKE
639	60210.18	39830.23	36.5	BOTTOM OF CONTAINMENT DIKE
640	60209.40	39826.48	36.5	BOTTOM OF CONTAINMENT DIKE
641	60216.67	39788.04	36.5	BOTTOM OF CONTAINMENT DIKE
642	60214.28	39784.53	38.0	TOP OF INTERMEDIATE DIKE
643	60214.83	39781.58	38.0	TOP OF INTERMEDIATE DIKE
644	60219.87	39738.77	39.5	TOP OF CONTAINMENT DIKE
645	60229.22	39732.40	39.5	TOP OF CONTAINMENT DIKE
646	60324.71	39750.45	39.5	TOP OF CONTAINMENT DIKE
647	60331.08	39759.79	39.5	TOP OF CONTAINMENT DIKE
648	60313.40	39853.38	39.5	TOP OF CONTAINMENT DIKE
649	60304.05	39859.75	39.5	TOP OF CONTAINMENT DIKE
650	60215.55	39843.02	39.5	TOP OF CONTAINMENT DIKE
651	60208.50	39838.41	39.5	TOP OF CONTAINMENT DIKE
652	60205.23	39833.61	39.5	TOP OF CONTAINMENT DIKE
653	60203.50	39825.37	39.5	TOP OF CONTAINMENT DIKE

**1 GRADING PLAN - CONTAINMENT BASIN**  
SCALE: 1" = 10.0'

REVISIONS	DATE	DESCRIPTION
1	11/28/23	NTP 1 FILL LIMITS, HATCH UPDATES
2	03/05/24	EXISTING CONTOURS



**HDL ENGINEERING Consultants LLC**  
civil - geotechnical - surveying - environmental - material testing  
ANCHORAGE  
907.564.2120  
3335 Arctic Boulevard, Suite 100 Anchorage, AK 99503  
www.HDLalaska.com  
AECL861

SCAMMON BAY BULK FUEL UPGRADES

**ALASKA ENERGY AUTHORITY**

SCAMMON BAY, ALASKA

SHEET TITLE: CONTAINMENT BASIN - GRADING PLAN

SHEET: C1.03R

DRAWN BY: KK CHECKED BY: DEC  
DATE: 01/31/22 AS SHOWN  
JOB NUMBER: 20-017

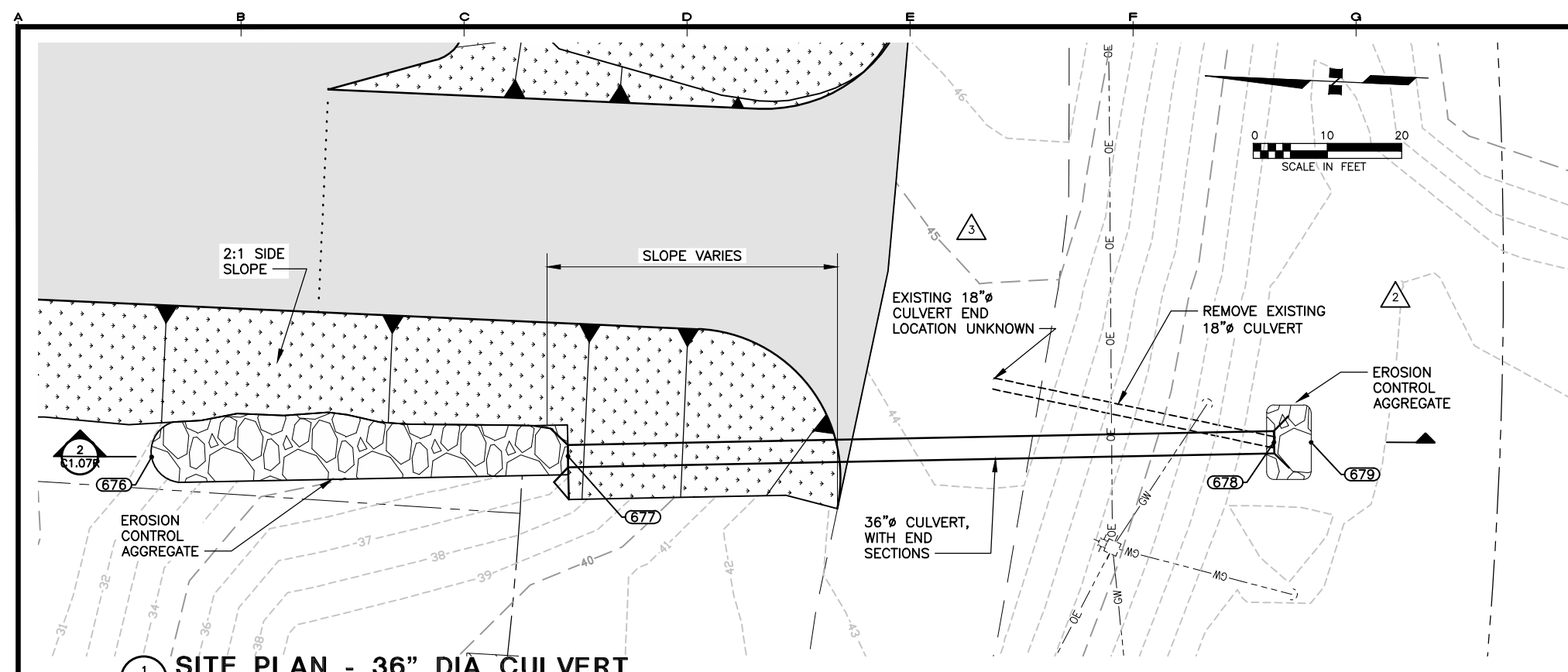


LAYOUT  
C1.07

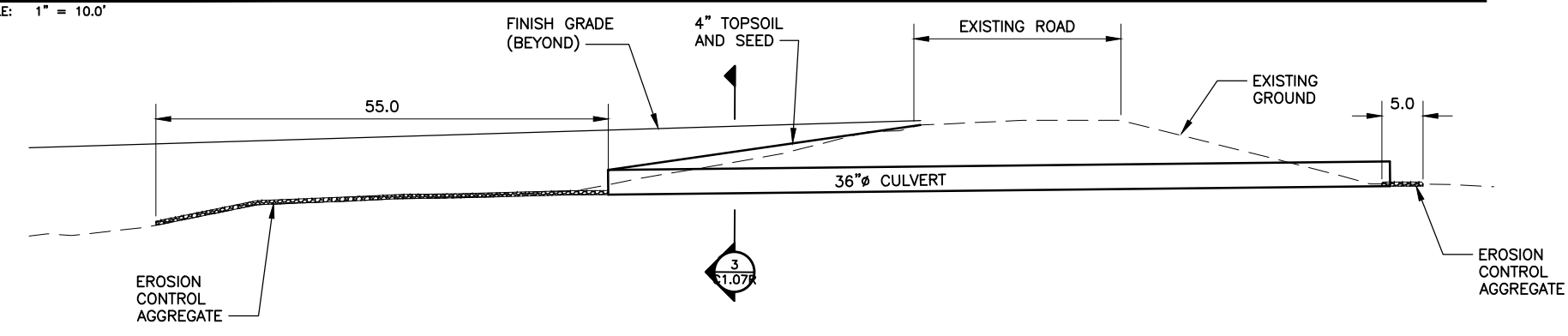
DATE TIME  
3/7/2024 11:03 AM

DRAWING LOCATION  
H:\Jobs\20-017 Scammon Bay BFU Ph 1 and 2 (AEA)\CAD\Drawings\20-017\_04\_site-grade.dwg

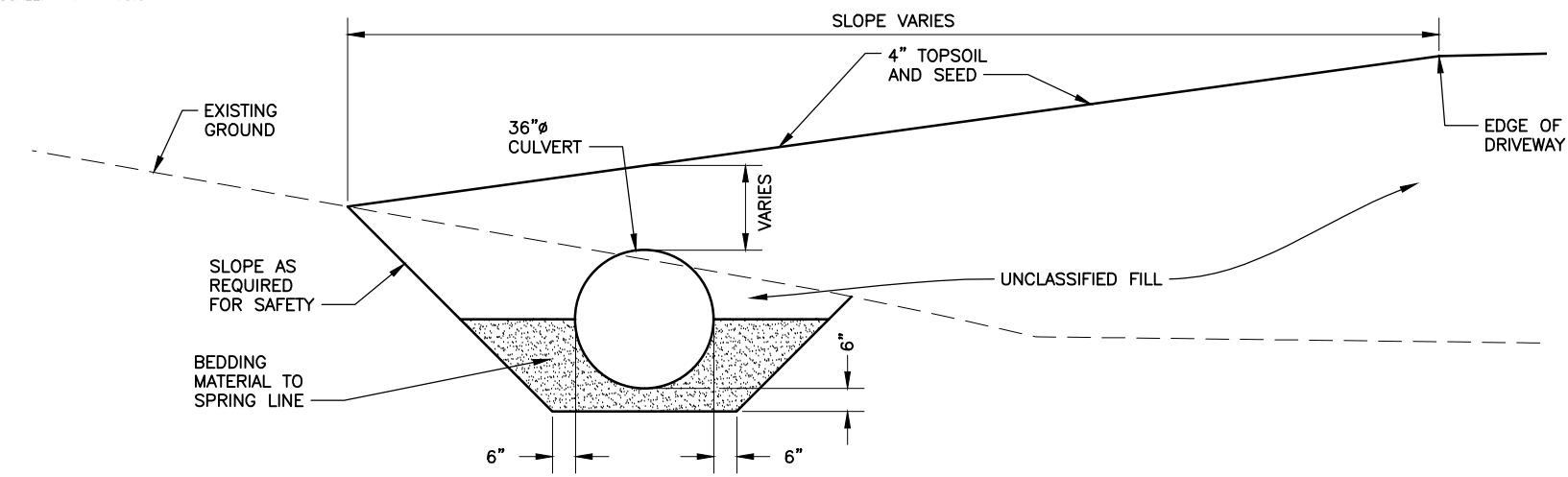
KKORNEGAY



**1 SITE PLAN - 36" DIA CULVERT**  
SCALE: 1" = 10.0'



**2 SECTION - 36" DIA. CULVERT**  
SCALE: 1" = 10.0'



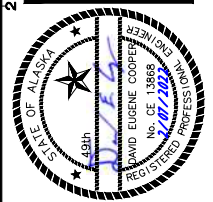
**3 SECTION - 36" DIA. CULVERT**  
SCALE: 1" = 2.0'

**NOTES:**

- SEE SHEET G1.02, AND G1.03 FOR GENERAL NOTES, ABBREVIATIONS, AND LEGEND.
- INSTALL EROSION CONTROL MEASURES IN ACCORDANCE WITH PROJECT MANUAL.
- SEE SURVEY CONTROL SHEET G1.07 FOR BASIS ON CONTROL.
- GRADE AREA TO PROVIDE POSITIVE DRAINAGE TO CULVERT, TOPSOIL AND SEED, INCIDENTAL TO CULVERT.
- MAINTAIN TRAFFIC ON EXISTING ROAD IN ACCORDANCE WITH THE PROJECT MANUAL.

CULVERT POINTS				
Point #	Northing	Easting	Elevation	Description
676	60158.16	39636.22	31.4	EROSION CONTROL AGGREGATE/ME
677	60102.21	39638.83	35.2	END/INVERT 36" DIA CULVERT
678	60007.41	39644.94	36.2	BEGIN/INVERT 36" DIA CULVERT
679	60002.41	39645.17	36.2	EROSION CONTROL AGGREGATE/ME

REVISIONS	DATE	DESCRIPTION
1	11/28/23	NIP 1 FILL LIMITS, HATCH
2	03/05/24	UPDATES EXISTING CONTOURS



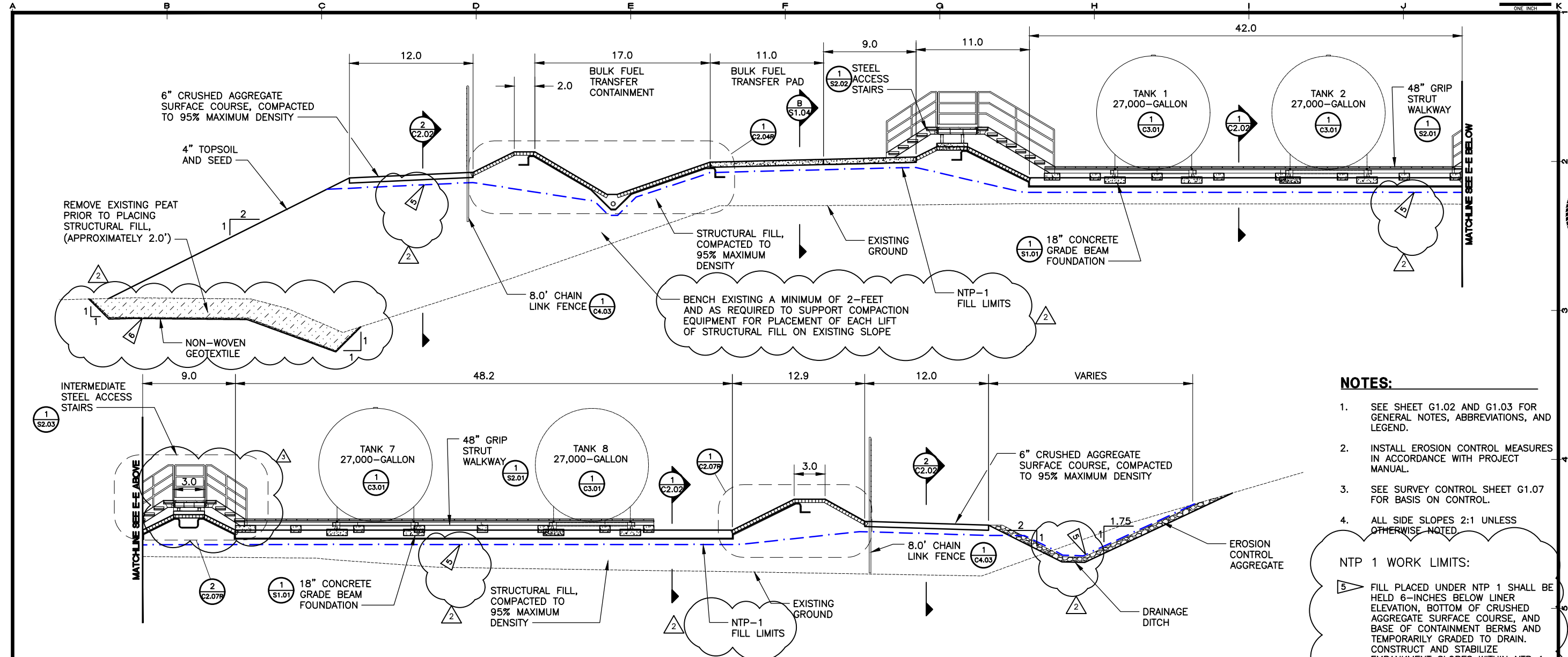
**HDL ENGINEERING**  
Consultants LLC  
civil - geotechnical - surveying - environmental - material testing  
ANCHORAGE  
907.564.2120  
3335 Arctic Boulevard, Suite 100 Anchorage, AK 99503  
www.HDLalaska.com  
AECL861

SCAMMON BAY BULK FUEL UPGRADES  
**ALASKA ENERGY AUTHORITY**  
SCAMMON BAY, ALASKA

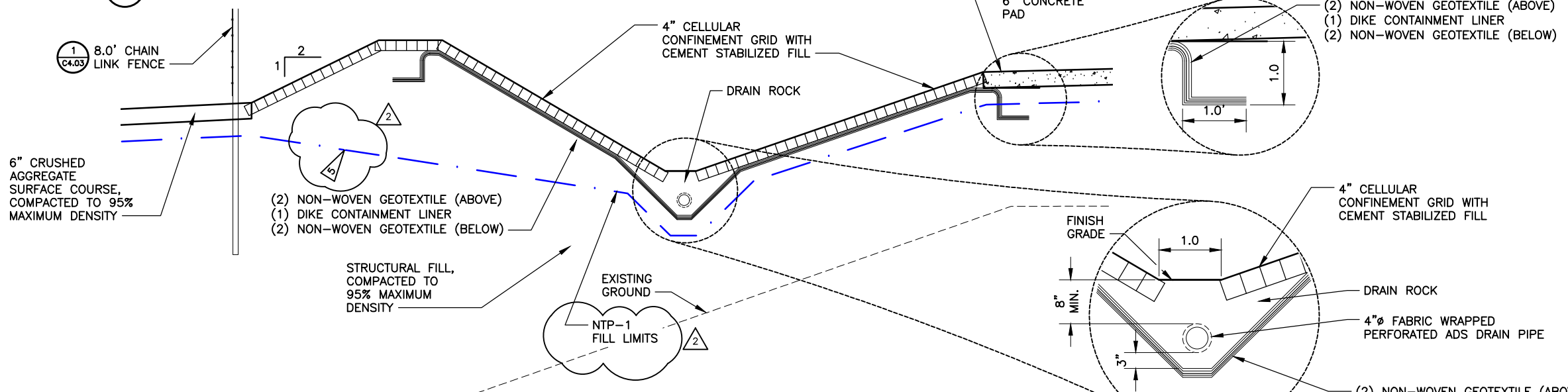
SHEET TITLE <b>SITE PLAN - 36 INCH DIA. CULVERT</b>	
SHEET <b>C1.07R</b>	
DRAWN BY: <i>KK</i>	CHECKED BY: <i>DEC</i>
DATE: 01/31/22	SCALE: AS SHOWN
JOB NUMBER: 20-017	

LAYOUT C2.04  
DATE TIME 3/7/2024 11:02 AM

DRAWING LOCATION H:\Jobs\20-017 Scammon Bay BFU Ph 1 and 2 (AEA)\CAD\Drawings\20-017\_04\_SF-SECTIONS-REV.dwg KRONKAY



**SECTION - TANK FARM**  
SCALE: NONE



**SECTION - BULK FUEL TRANSFER STATION**  
SCALE: NONE

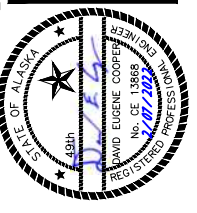
- NOTES:**
- SEE SHEET G1.02 AND G1.03 FOR GENERAL NOTES, ABBREVIATIONS, AND LEGEND.
  - INSTALL EROSION CONTROL MEASURES IN ACCORDANCE WITH PROJECT MANUAL.
  - SEE SURVEY CONTROL SHEET G1.07 FOR BASIS ON CONTROL.
  - ALL SIDE SLOPES 2:1 UNLESS OTHERWISE NOTED.

**NTP 1 WORK LIMITS:**

5 FILL PLACED UNDER NTP 1 SHALL BE HELD 6-INCHES BELOW LINER ELEVATION, BOTTOM OF CRUSHED AGGREGATE SURFACE COURSE, AND BASE OF CONTAINMENT BERMS AND TEMPORARILY GRADED TO DRAIN. CONSTRUCT AND STABILIZE EMBANKMENT SLOPES WITHIN NTP 1 WORK LIMITS.

6 WHERE FILL IS PLACED BEYOND THE TOE OF THE EXISTING EMBANKMENT, EXCAVATE TO BOTTOM OF ORGANIC SILT (PEAT) OR AS DIRECTED BY THE ENGINEER. AVERAGE DEPTH OF SILT LAYER IS ESTIMATED TO BE APPROXIMATELY 24-INCHES. BEGIN FULL DEPTH EXCAVATION AT TOE OF EXISTING EMBANKMENT. END FULL DEPTH EXCAVATION OF TOE OF NEW EMBANKMENT. BACKFILL WITH STRUCTURAL FILL, COMPACTED TO 95% MAXIMUM DENSITY.

REVISIONS	DATE	DESCRIPTION
1	11/28/23	NTP 1 FILL LIMITS
2	03/05/24	LINER ADJUSTMENT



**HDL ENGINEERING**  
Consultants LLC  
civil - geotechnical - surveying - environmental - material testing  
ANCHORAGE  
907.564.2120  
3335 Arctic Boulevard, Suite 100 Anchorage, AK 99503  
www.HDLalaska.com  
AECL861

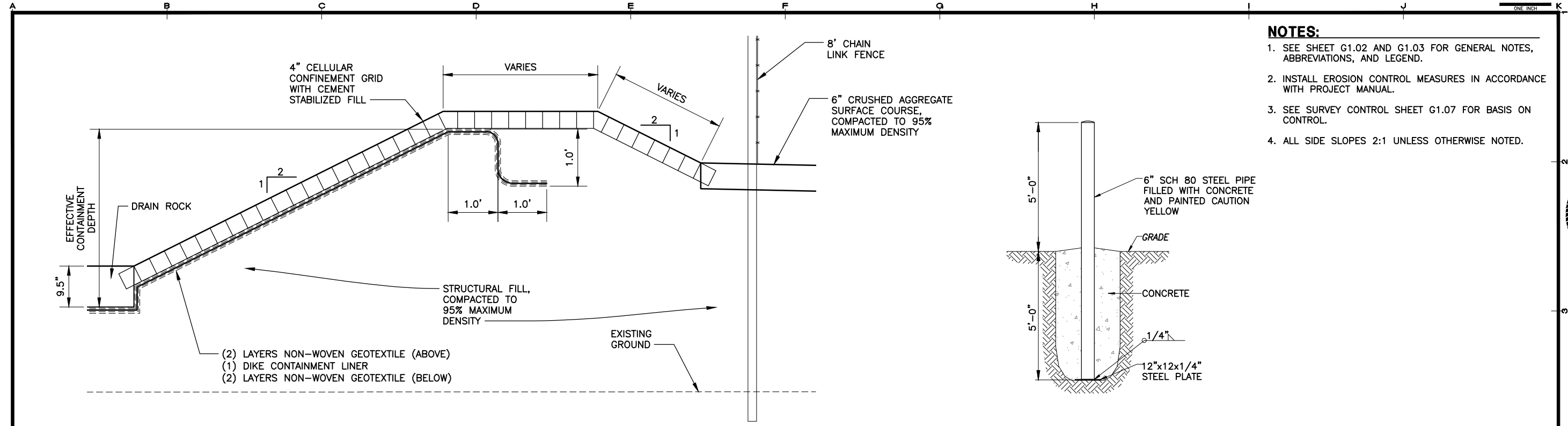


SCAMMON BAY BULK FUEL UPGRADES  
**ALASKA ENERGY AUTHORITY**  
SCAMMON BAY, ALASKA

SHEET TITLE	
SECTIONS	
SHEET	
C2.04R	
DRAWN BY: KK	CHECKED BY: DEC
DATE: 01/31/22	SCALE: AS SHOWN
JOB NUMBER: 20-017	

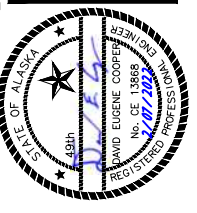
LAYOUT C2.07  
DATE TIME 3/7/2024 11:02 AM

DRAWING LOCATION H:\Jobs\20-017 Scammon Bay BFU Ph 1 and 2 (AEA)\CAD\Drawings\20-017\_04\_SP-SECTIONS-FV.dwg KIKORNEGAY



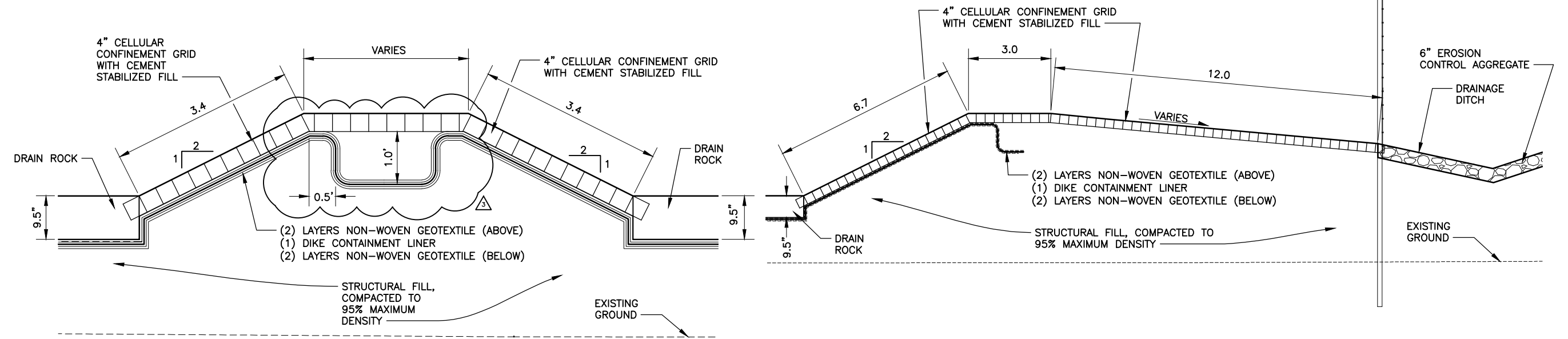
- NOTES:**
1. SEE SHEET G1.02 AND G1.03 FOR GENERAL NOTES, ABBREVIATIONS, AND LEGEND.
  2. INSTALL EROSION CONTROL MEASURES IN ACCORDANCE WITH PROJECT MANUAL.
  3. SEE SURVEY CONTROL SHEET G1.07 FOR BASIS ON CONTROL.
  4. ALL SIDE SLOPES 2:1 UNLESS OTHERWISE NOTED.

REVISIONS	DATE	DESCRIPTION
1	03/05/24	LINEAR ADJUSTMENTS



**1 SECTION - DIKE CONTAINMENT**  
C2.07R SCALE: NONE

**3 BOLLARD DETAIL**  
C2.07R SCALE: NONE



**2 SECTION - INTERMEDIATE DIKE CONTAINMENT**  
C2.07R SCALE: NONE

**4 SECTION - DIKE CONTAINMENT**  
C2.07R SCALE: NONE

**HDL ENGINEERING**  
Consultants LLC  
civil - geotechnical - surveying - environmental - material testing  
ANCHORAGE  
907.564.2120  
3335 Arctic Boulevard, Suite 100 Anchorage, AK 99503  
www.HDLalaska.com  
AECL861

SCAMMON BAY BULK FUEL UPGRADES  
**ALASKA ENERGY AUTHORITY**  
SCAMMON BAY, ALASKA

SHEET TITLE	
SECTIONS AND DETAILS	
SHEET C2.07R	
DRAWN BY: KK	CHECKED BY: DEC
DATE: 01/31/22	SCALE: AS SHOWN
JOB NUMBER: 20-017	