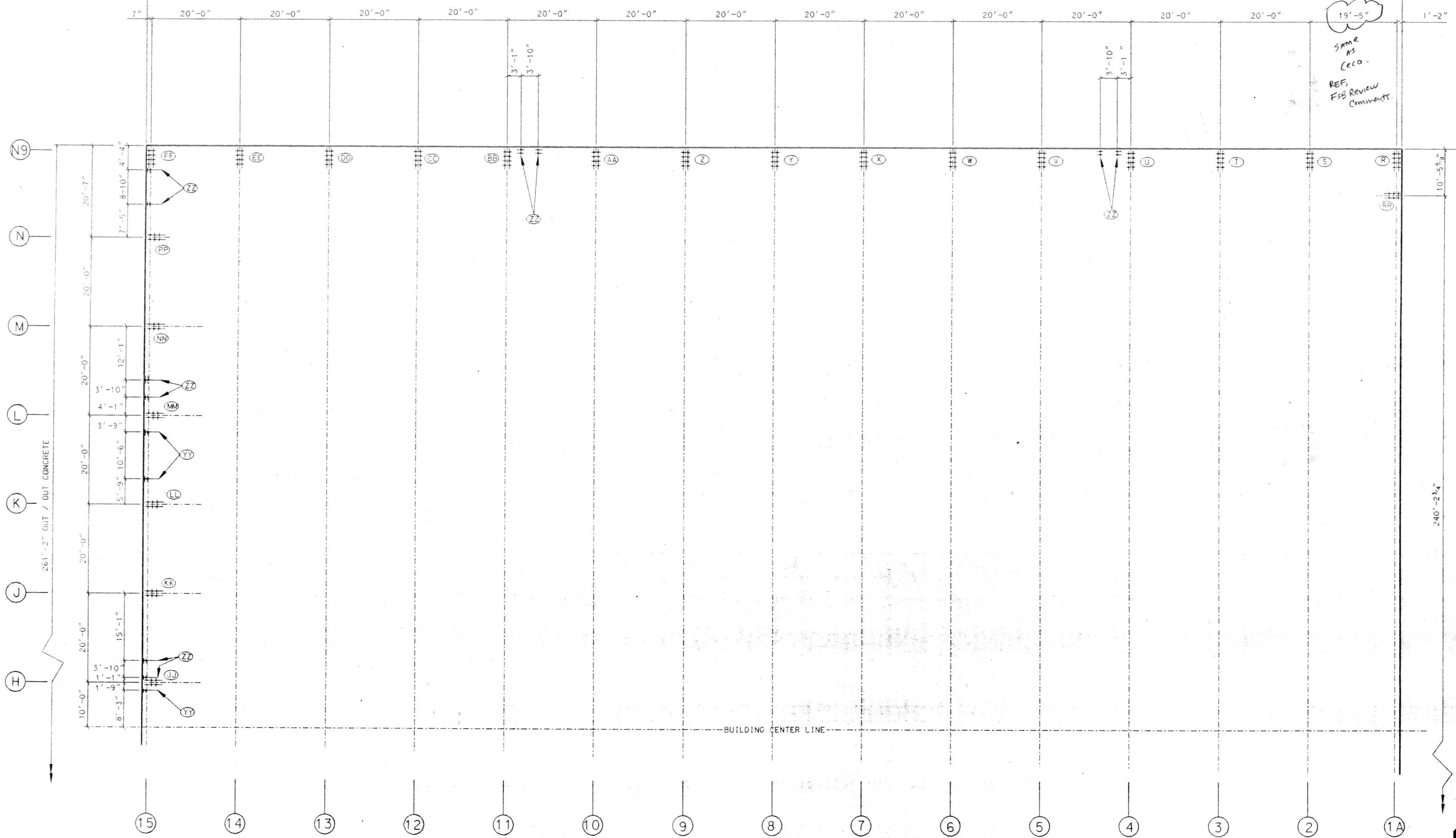


281'-2" OUT / OUT CONCRETE



SUBMITTAL REVIEW	
APPROVED	
OTHER:	
<input checked="" type="checkbox"/> APPROVED AS NOTED	
<input type="checkbox"/> RETURN FOR RESUBMITTAL	
<input type="checkbox"/> DISAPPROVED - SEE REMARKS	

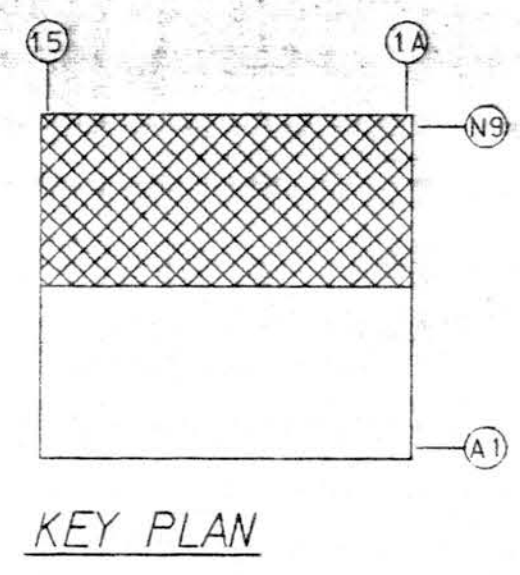
Review is only for conformance with the design contract and with the information given in the contract documents. The contractor remains responsible for compliance with all requirements of the contract documents.

FRANKFURT SHORT & COMPANY, P.C.  
By: *[Signature]*  
SUBMITTAL NO. 9126-1320A-02-02

STRAND HUNT CONSTRUCTION SUBMITTAL/SHOP DRAWING REVIEW	
Project No.	92-281
Submittal No.	13.120A-02-02, Item #4
Spec. Section	13.120
<input checked="" type="checkbox"/> These documents have been reviewed and are in general conformance with the plans and specifications.	
<input type="checkbox"/> These documents have been reviewed and are not in general conformance with the plans and specifications.	
Revised and resubmit by	
Reviewed by	Date



PARTIAL ANCHOR BOLT SETTING PLAN  
 REFER TO SHEET AB-02 FOR BALANCE OF ANCHOR BOLT SETTING PLAN  
 REFER TO SHEET AB-03, AB-04, AB-05, AND AB-06 FOR ACTUAL ANCHOR BOLT SETTINGS



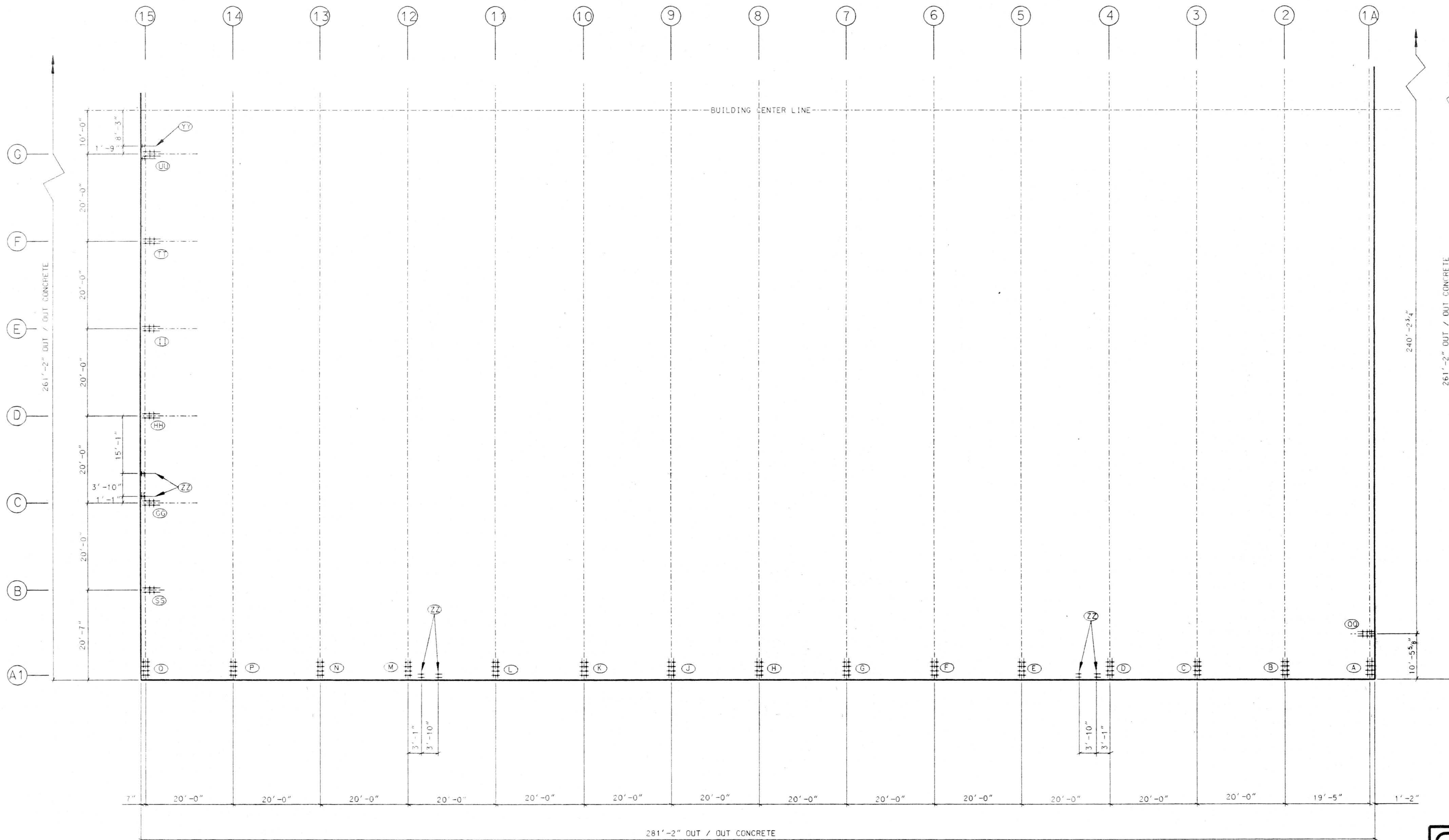
NO.	REVISION	MADE	CHK'D	DATE
A	FOR APPROVAL	LMC	RAY	3/94

**AMERICAN BUILDINGS COMPANY**  
 Heavy Fabrication Division  
 Bellaire, Texas

© Copyright 1994 American Buildings Company All Rights Reserved

Builder:	Seattle Construction Services, Inc.		
Owner:	Alaska Industrial Development and Export Authority		
Building:	Line Maintenance Hangar		
Location:	Anchorage, Alaska		
DRAWN BY	LMC	JOB NO.	51-9290
CHECKED BY	RAY	DATE	2/94
		DWG.	AB-01





SUBMITTAL REVIEW	
<input type="checkbox"/>	APPROVED
<input type="checkbox"/>	OTHER
<input checked="" type="checkbox"/>	APPROVED AS NOTED
<input checked="" type="checkbox"/>	RETURN FOR RESUBMITTAL
<input type="checkbox"/>	DISAPPROVED - SEE REMARKS

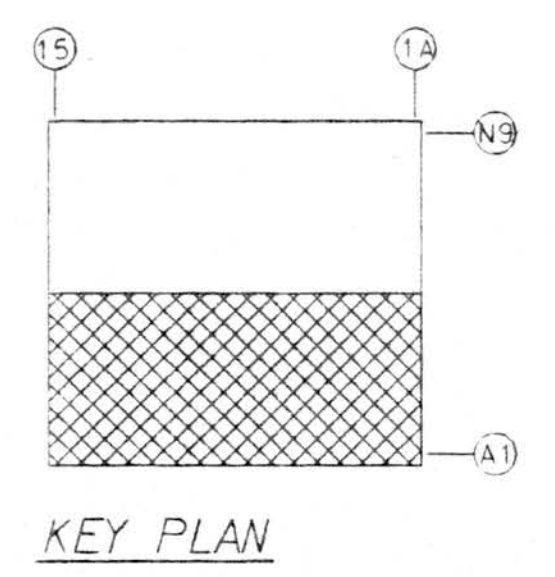
Review is only for conformance with the design concept and with the information given in the contract documents. The contractor remains responsible for compliance with all requirements of the contract documents.

FRANKFURT • SHORT • ENGINEERING ASSOCIATES, P.C.  
 BY: [Signature] DATE: MAR 28 1994  
 SUBMITTAL NO. 9126-15120A-02-02



MAR 24 1994

PARTIAL ANCHOR BOLT SETTING PLAN  
 REFER TO SHEET AB-01 FOR BALANCE OF ANCHOR BOLT SETTING PLAN  
 REFER TO SHEET AB-03, AB-04, AB-05, AND AB-06 FOR ACTUAL ANCHOR BOLT SETTINGS



KEY PLAN

LIL 85323

NO.	REVISION	MADE	CHK'D	DATE
A	FOR APPROVAL	LMC	KAY	3/94

**AMERICAN BUILDINGS COMPANY**  
 Heavy Fabrication Division  
 Bellaire, Texas

© Copyright 1994  
 American Buildings Company  
 All Rights Reserved

Builder: Seattle Construction Services, Inc.  
 Owner: Alaska Industrial Development and Export Authority  
 Building: Line Maintenance Hangar  
 Location: Anchorage, Alaska

DRAWN BY: LMC JOB NO. 51-9290  
 CHECKED BY: KAY DATE 2/94 DWG. AB-02

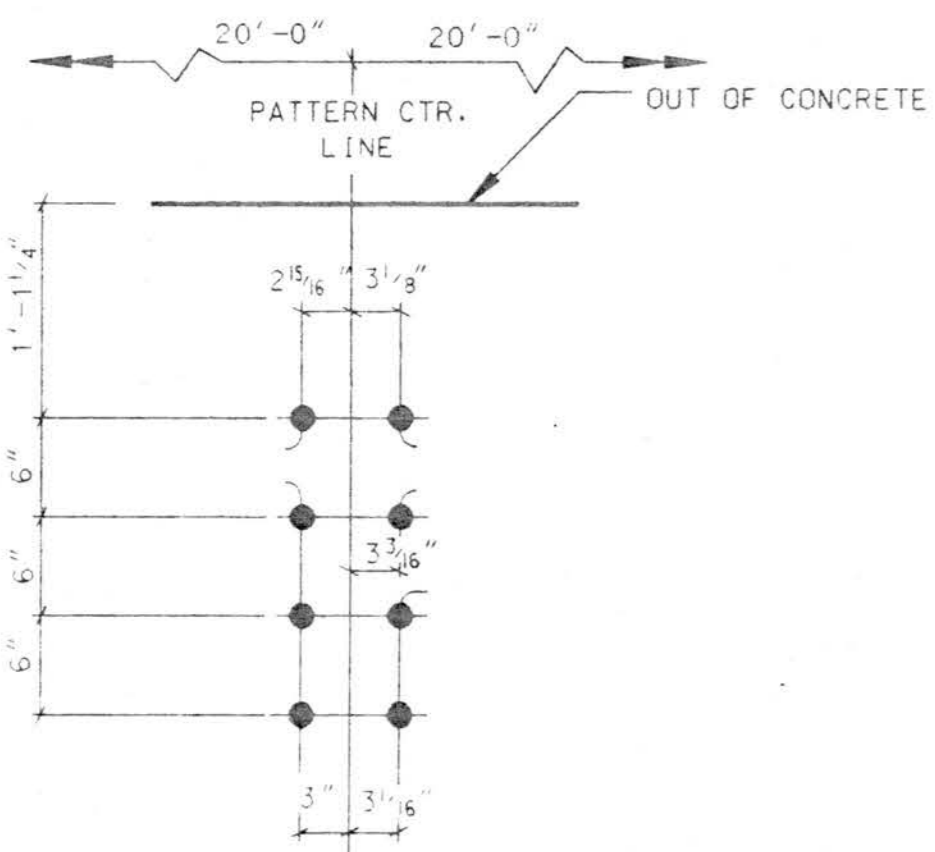




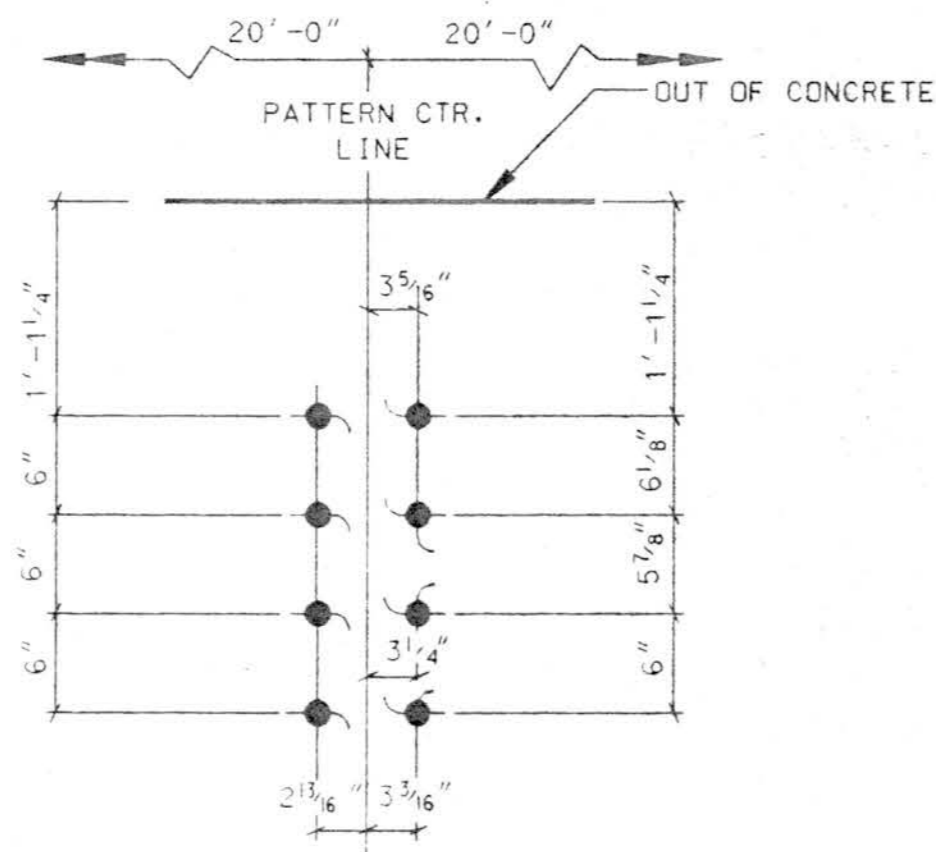




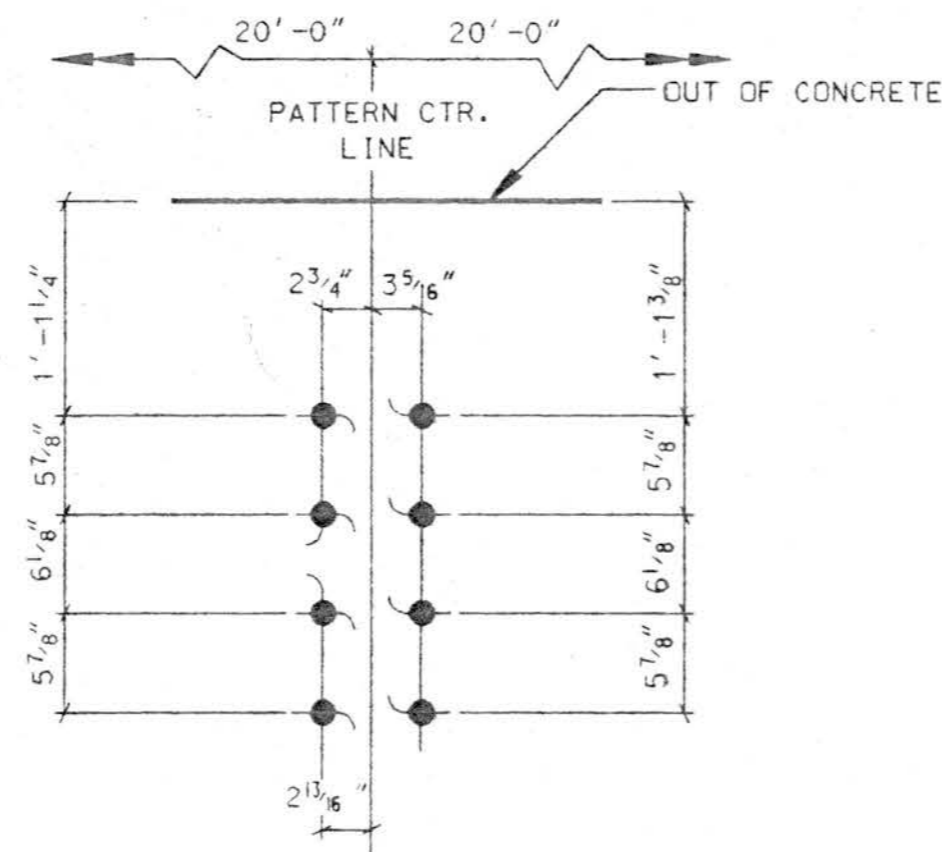




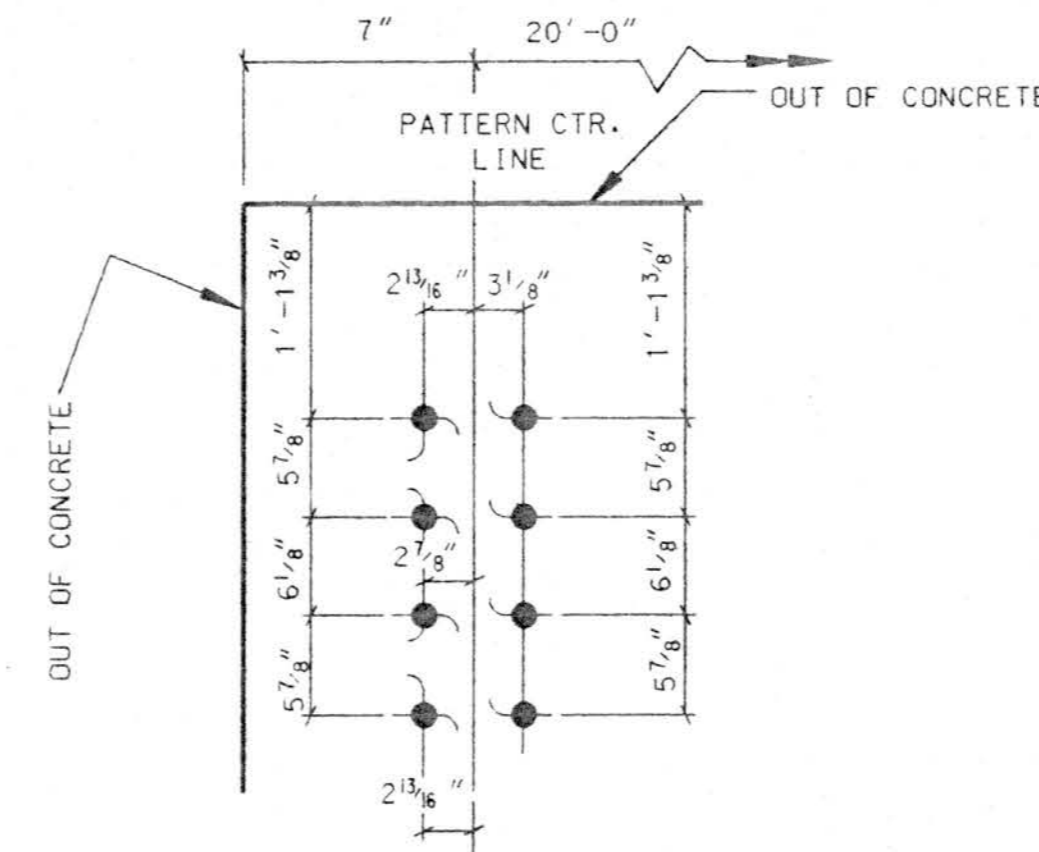
1 1/2" RD. ANCHOR BOLT  
(NOT BY ABC)  
\*BOTTOM OF BASE PLATE  
ELEVATION = 98'-11"  
ANCHOR BOLT SETTING



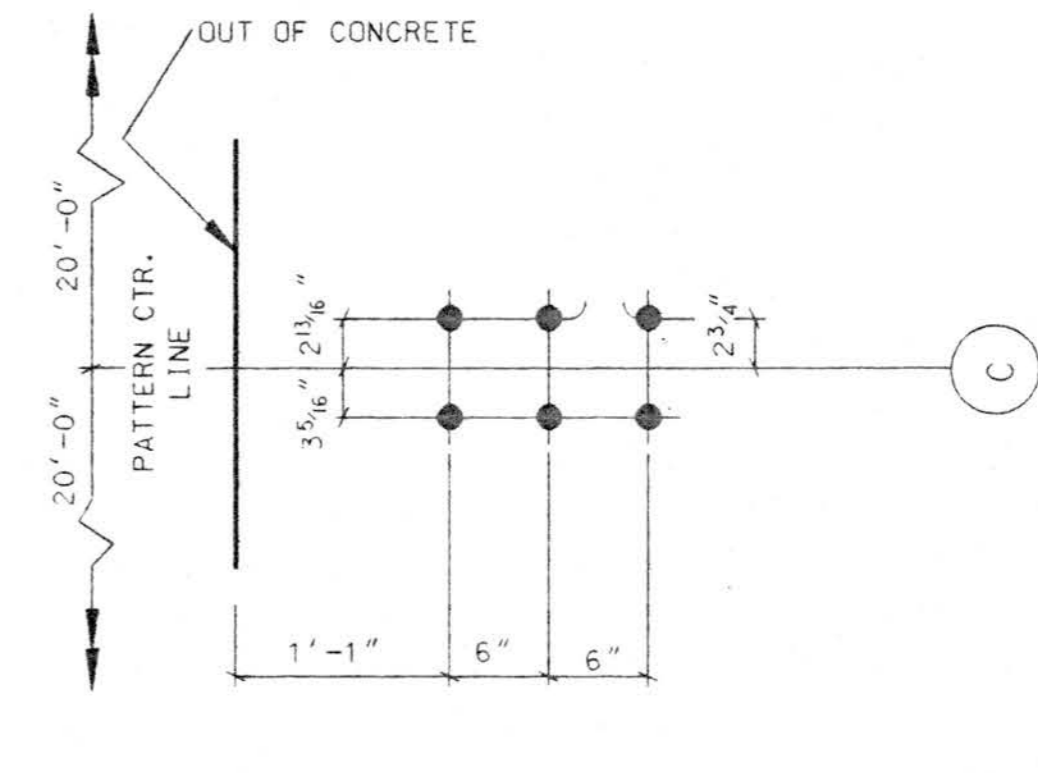
1 1/2" RD. ANCHOR BOLT  
(NOT BY ABC)  
\*BOTTOM OF BASE PLATE  
ELEVATION = 98'-11"  
ANCHOR BOLT SETTING



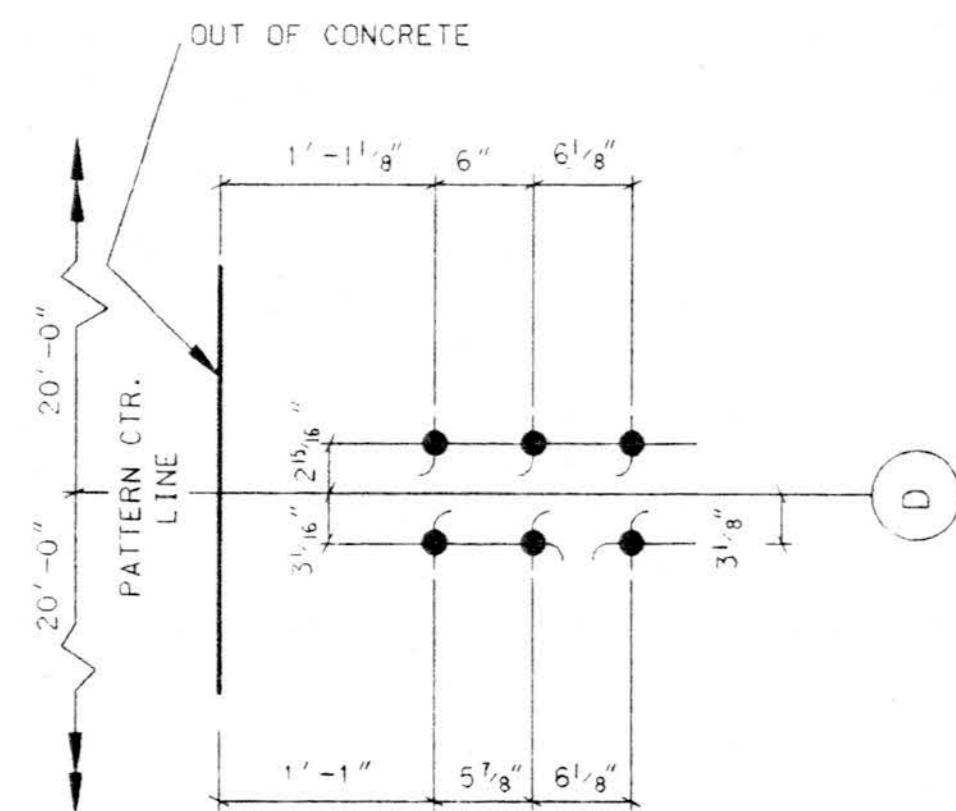
1 1/2" RD. ANCHOR BOLT  
(NOT BY ABC)  
\*BOTTOM OF BASE PLATE  
ELEVATION = 98'-11"  
ANCHOR BOLT SETTING



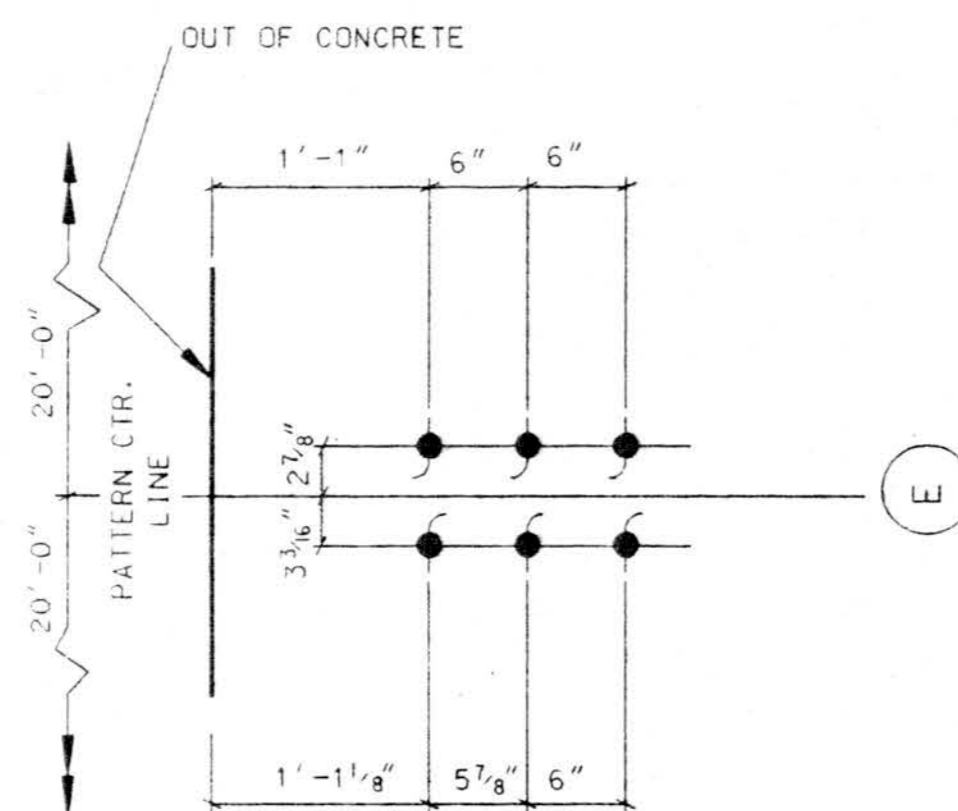
1 1/2" RD. ANCHOR BOLT  
(NOT BY ABC)  
\*BOTTOM OF BASE PLATE  
ELEVATION = 98'-11"  
ANCHOR BOLT SETTING



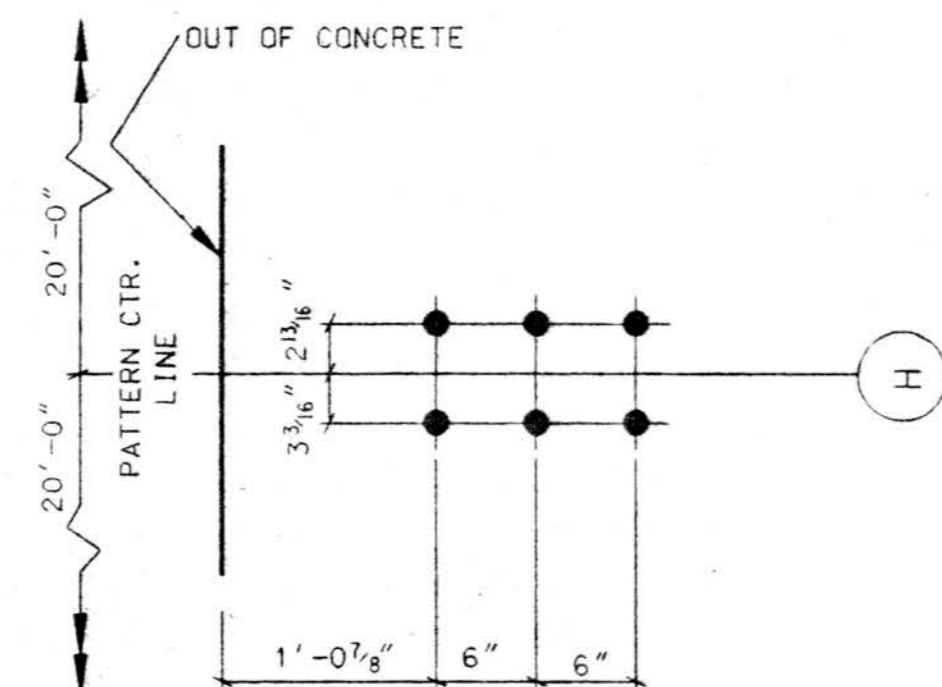
1" RD. ANCHOR BOLT  
(NOT BY ABC)  
\*BOTTOM OF BASE PLATE  
ELEVATION = 98'-11"  
ANCHOR BOLT SETTING



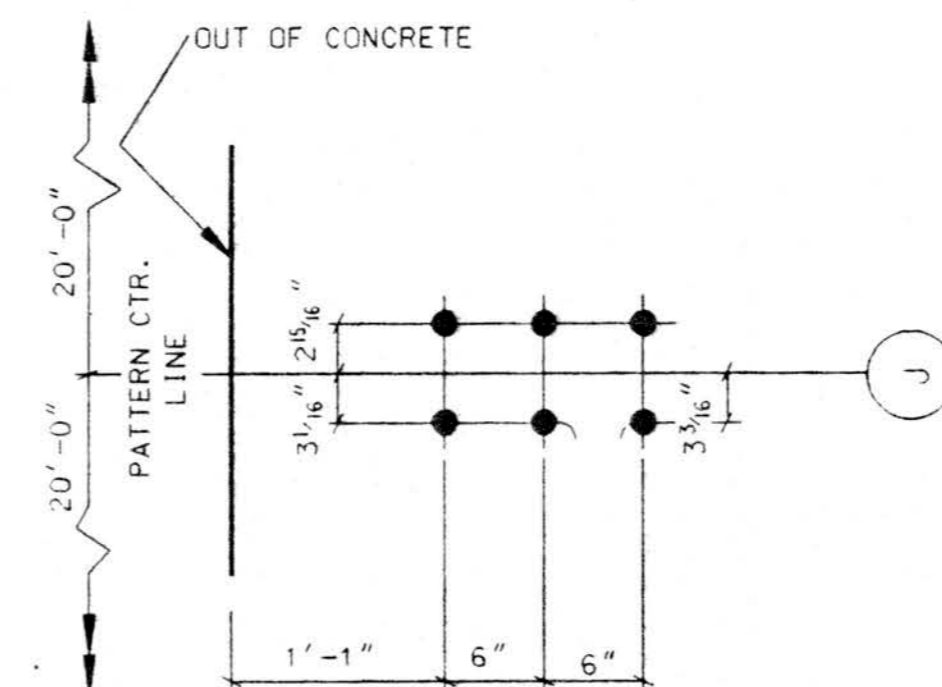
1" RD. ANCHOR BOLT  
(NOT BY ABC)  
\*BOTTOM OF BASE PLATE  
ELEVATION = 98'-11"  
ANCHOR BOLT SETTING



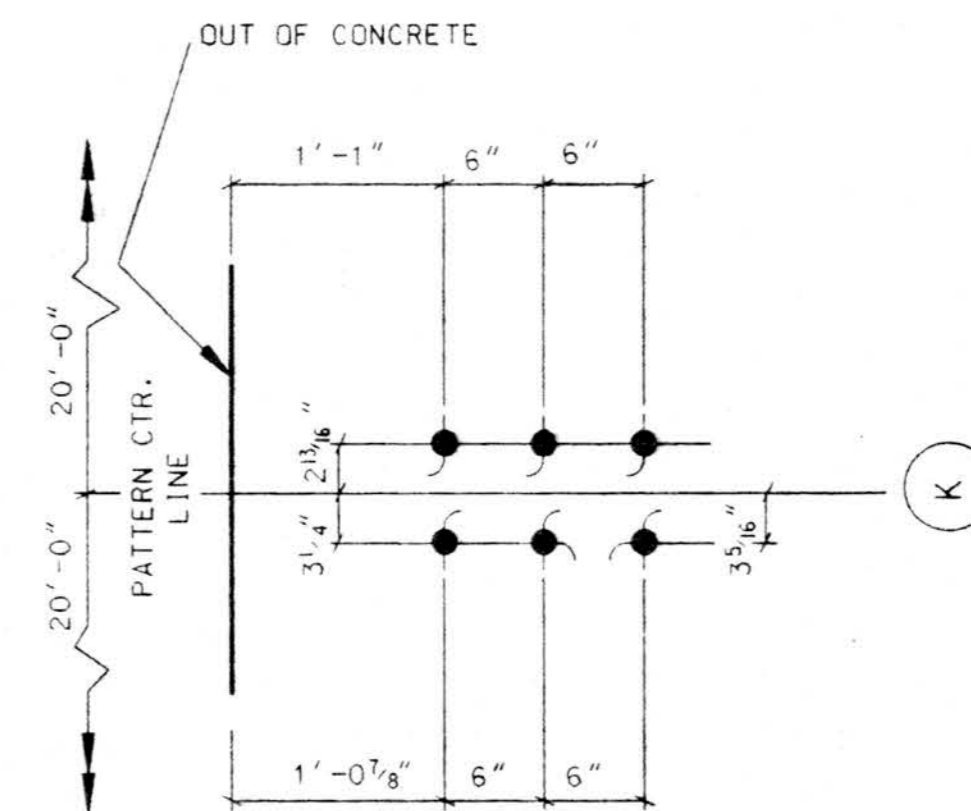
1" RD. ANCHOR BOLT  
(NOT BY ABC)  
\*BOTTOM OF BASE PLATE  
ELEVATION = 98'-11"  
ANCHOR BOLT SETTING



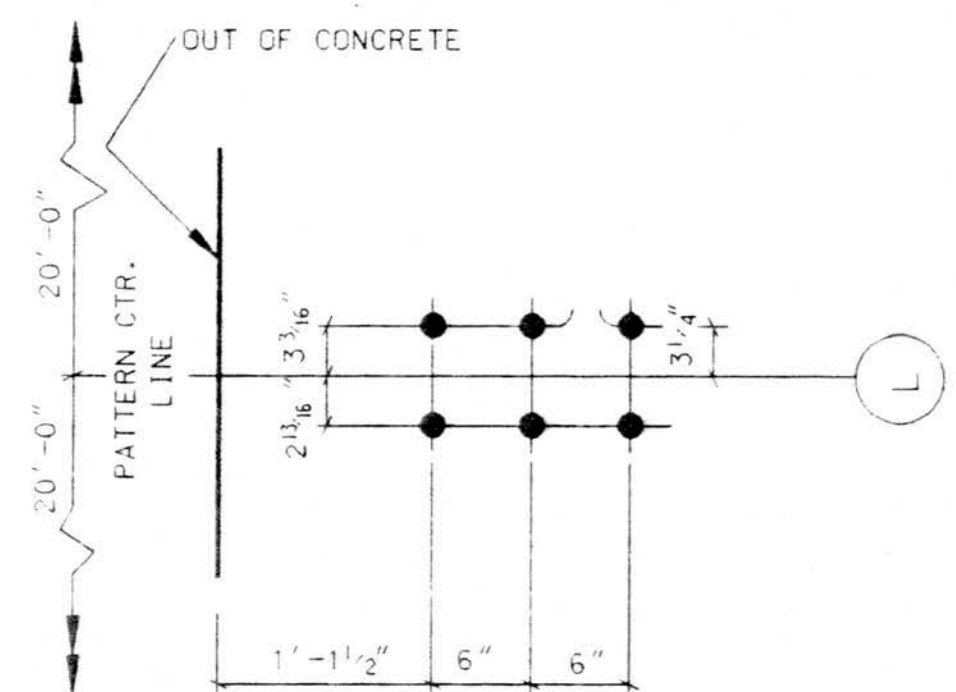
1" RD. ANCHOR BOLT  
(NOT BY ABC)  
\*BOTTOM OF BASE PLATE  
ELEVATION = 98'-11"  
ANCHOR BOLT SETTING



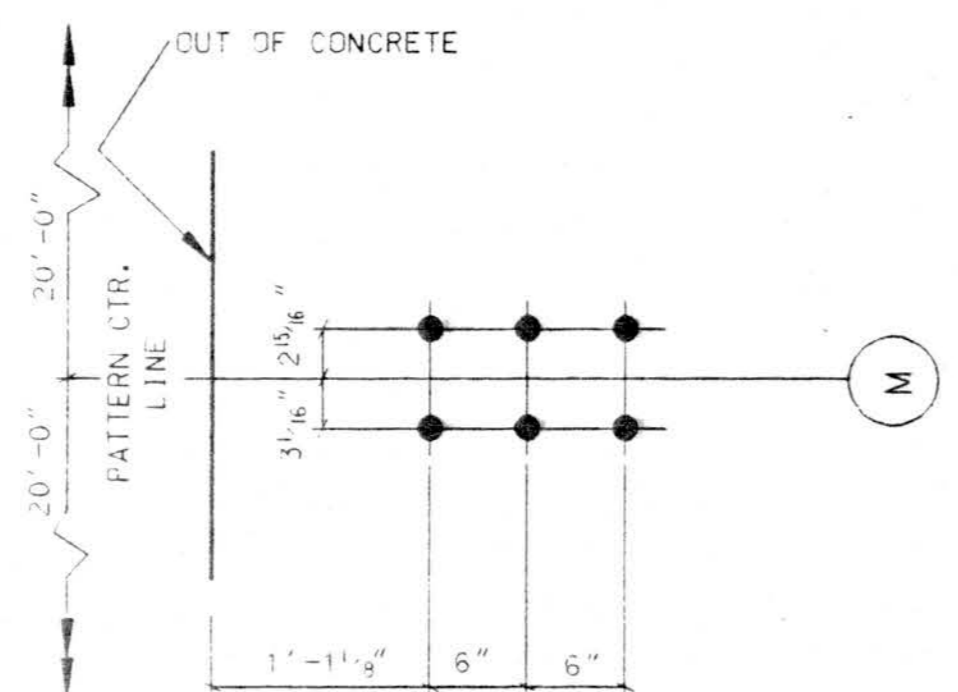
1" RD. ANCHOR BOLT  
(NOT BY ABC)  
\*BOTTOM OF BASE PLATE  
ELEVATION = 98'-11"  
ANCHOR BOLT SETTING



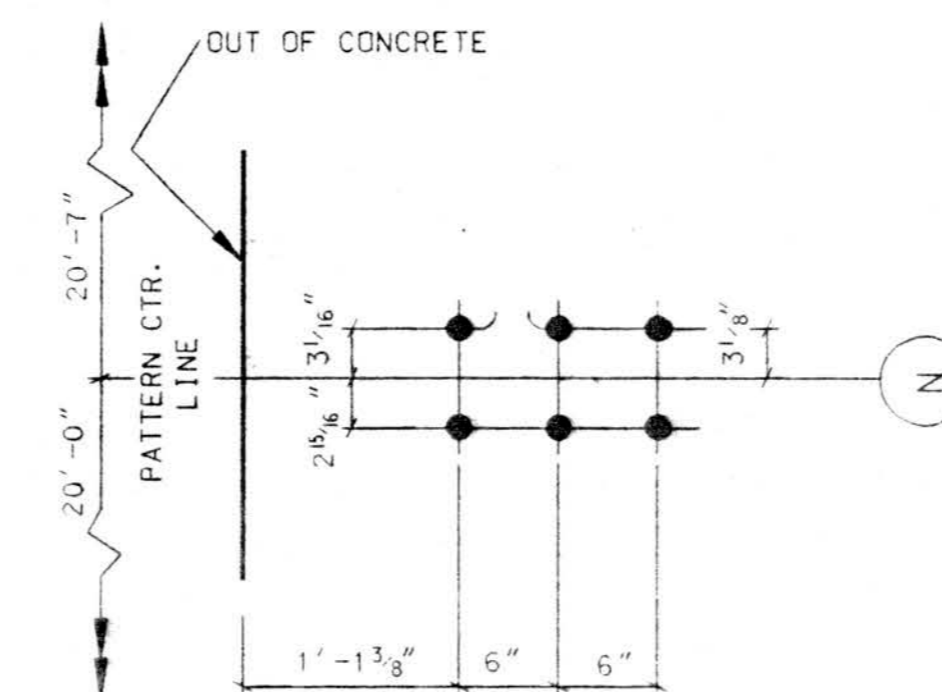
1" RD. ANCHOR BOLT  
(NOT BY ABC)  
\*BOTTOM OF BASE PLATE  
ELEVATION = 98'-11"  
ANCHOR BOLT SETTING



1" RD. ANCHOR BOLT  
(NOT BY ABC)  
\*BOTTOM OF BASE PLATE  
ELEVATION = 98'-11"  
ANCHOR BOLT SETTING



1" RD. ANCHOR BOLT  
(NOT BY ABC)  
\*BOTTOM OF BASE PLATE  
ELEVATION = 98'-11"  
ANCHOR BOLT SETTING



1" RD. ANCHOR BOLT  
(NOT BY ABC)  
\*BOTTOM OF BASE PLATE  
ELEVATION = 98'-11"  
ANCHOR BOLT SETTING



**SUBMITTAL REVIEW**

APPROVED
<input checked="" type="checkbox"/> OTHER: APPROVED AS NOTED
<input type="checkbox"/> RETURN FOR RESUBMITTAL
<input type="checkbox"/> DISAPPROVED - SEE REMARKS

Review is only for conformance with the design concept and with the information given in the contract documents. The contractor remains responsible for compliance with all requirements of the contract documents.

FRANKFURT • SHORT • BRUZA ASSOCIATES, P.C.  
By: [Signature] Date: APR 26 1994  
SUBMITTAL NO. 9126-1320A-02-02

**AMERICAN BUILDINGS COMPANY**  
Heavy Fabrication Division  
Bellaire, Texas

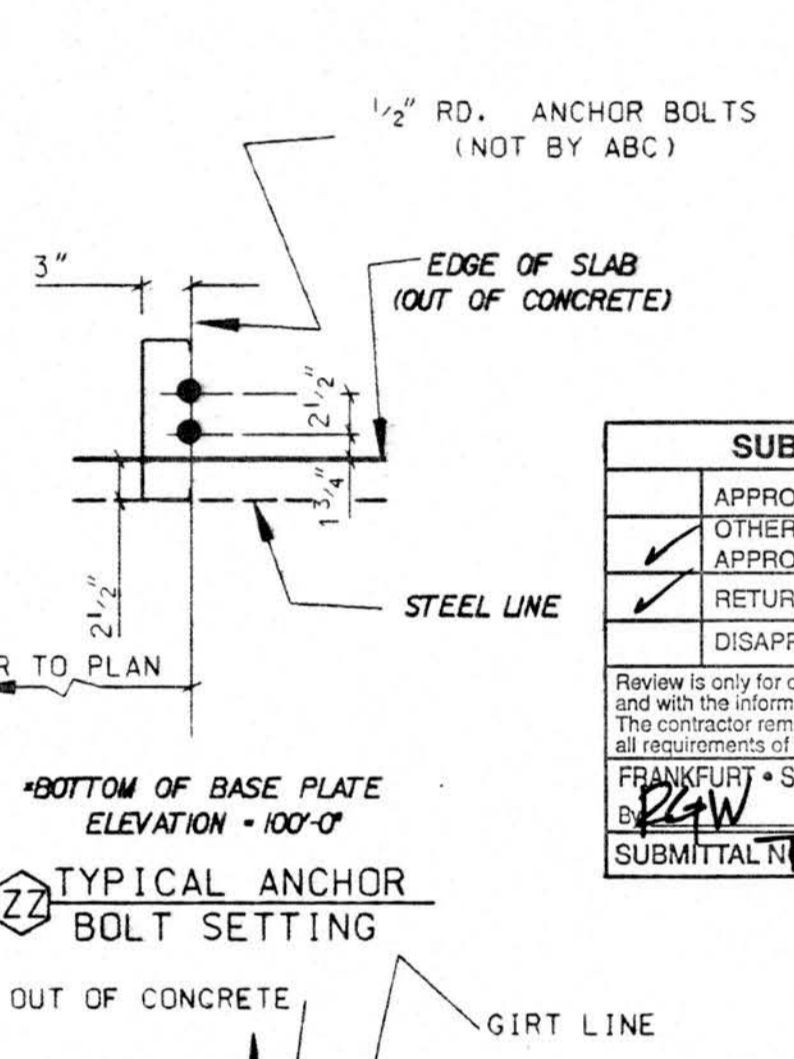
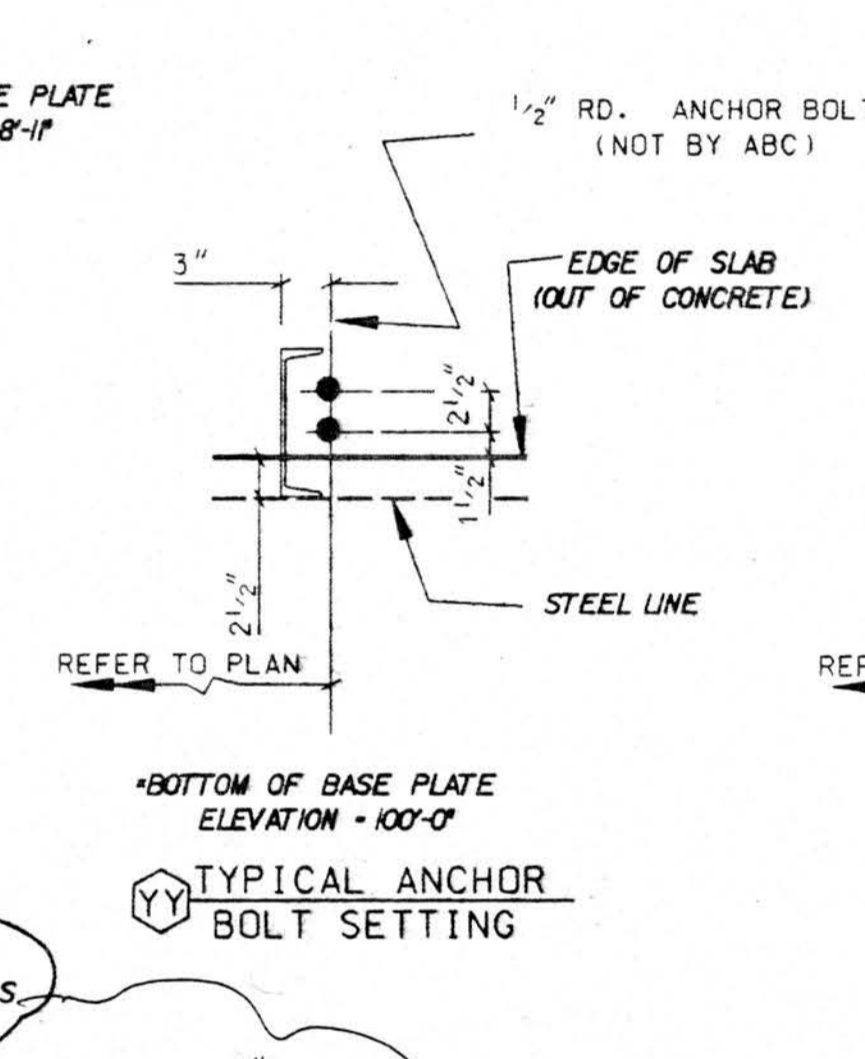
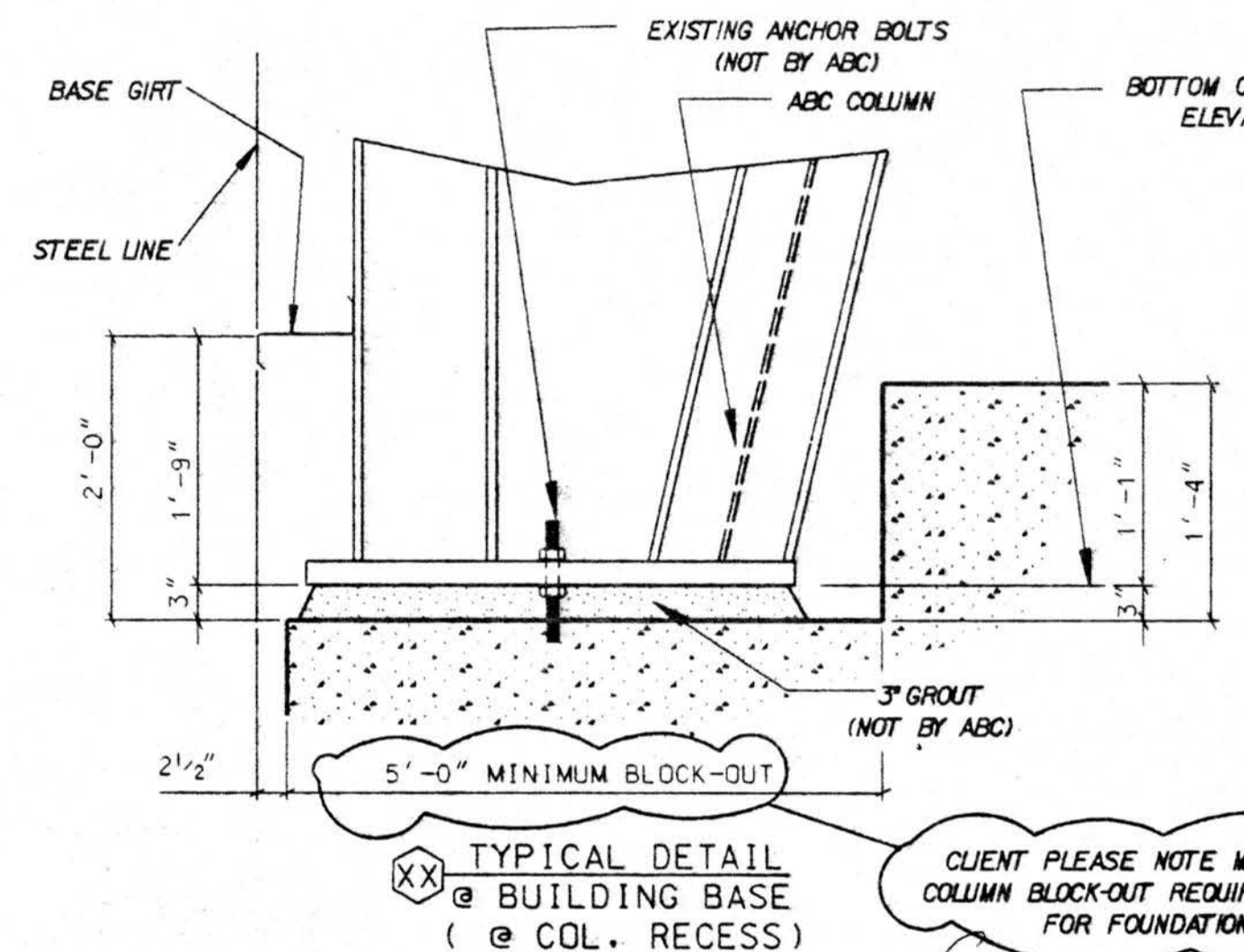
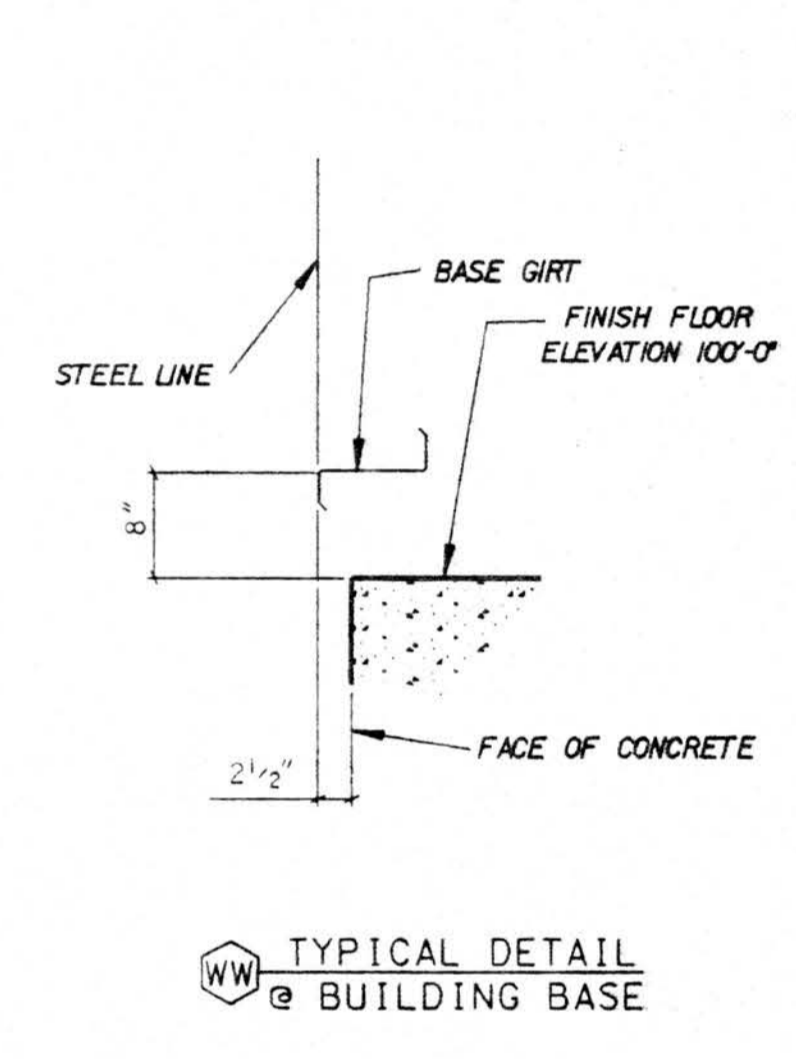
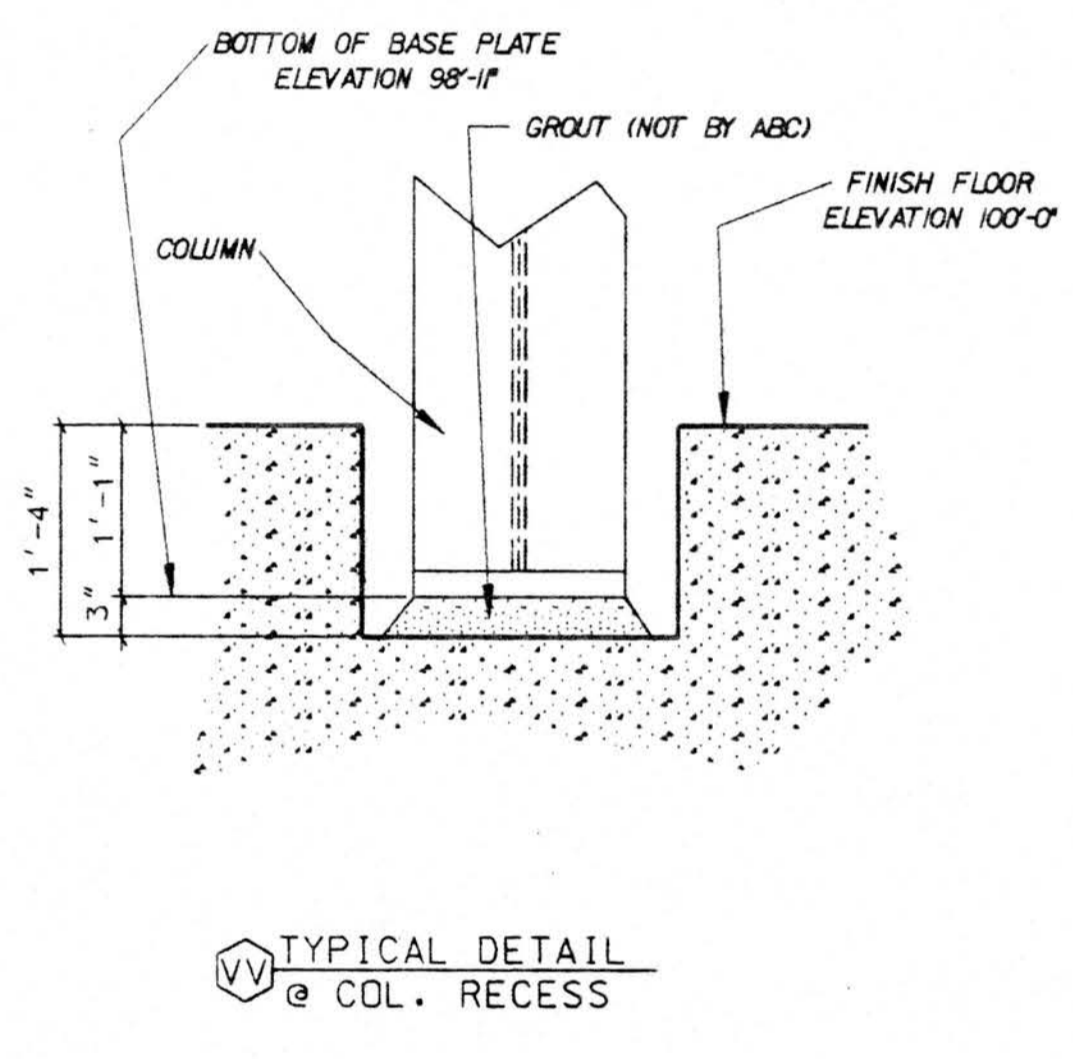
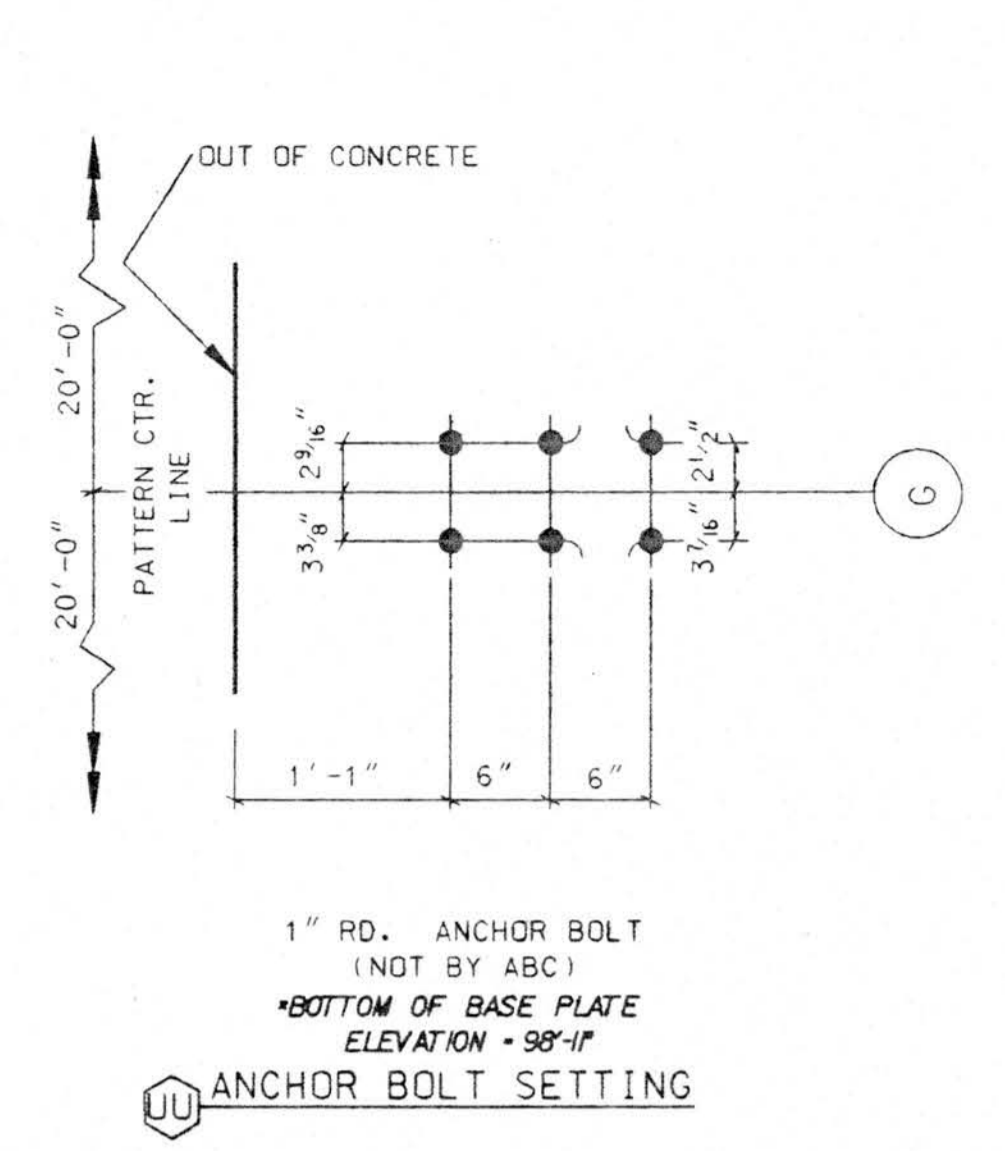
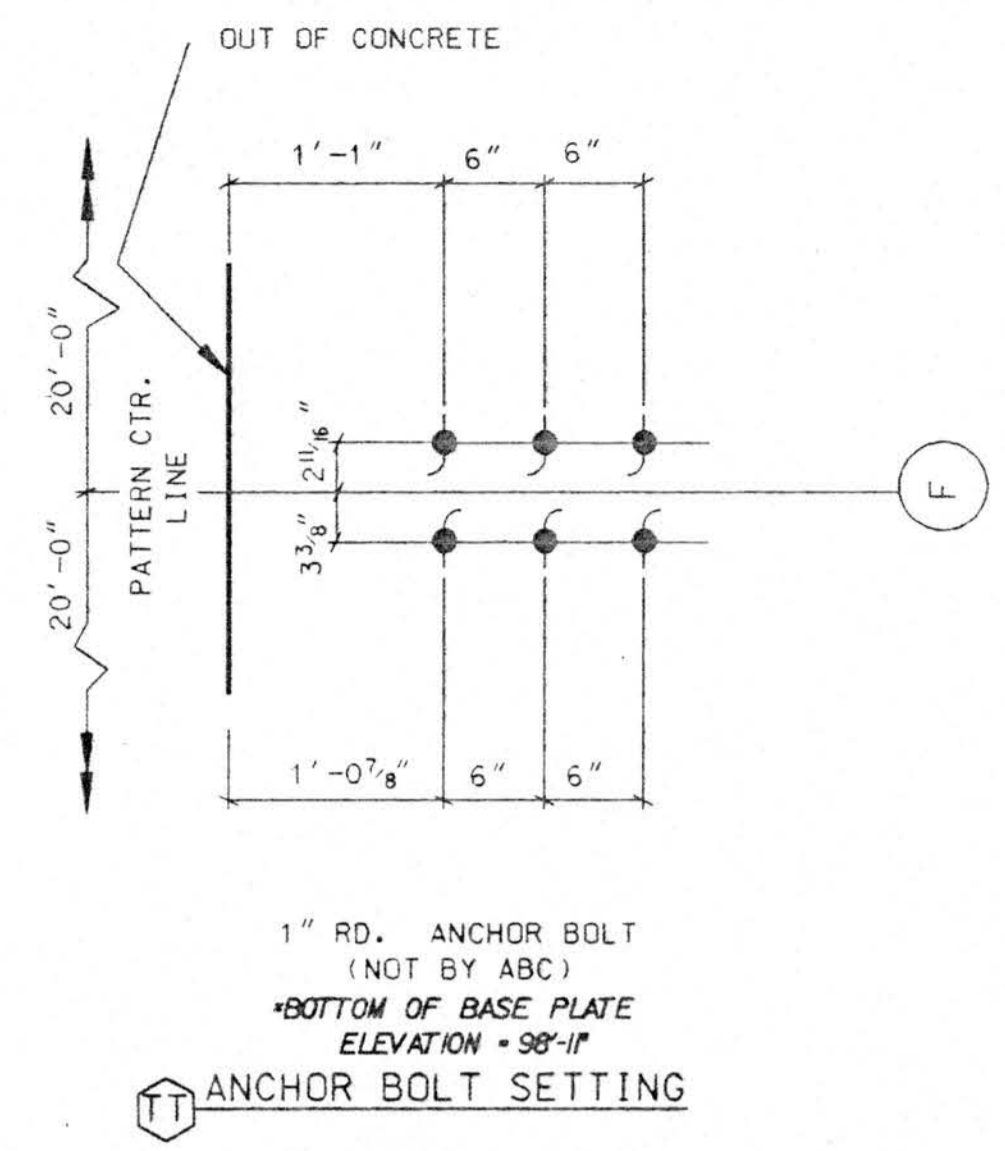
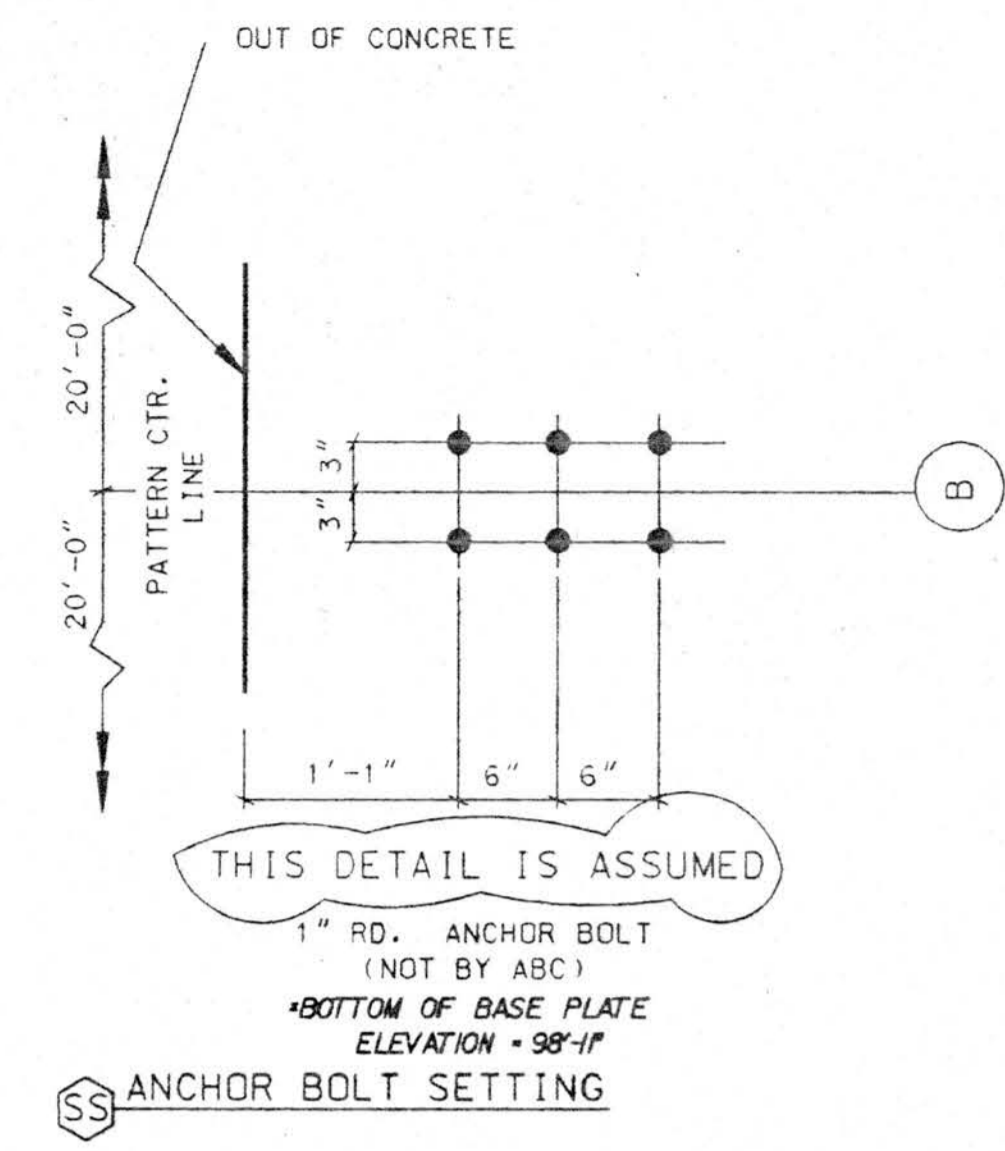
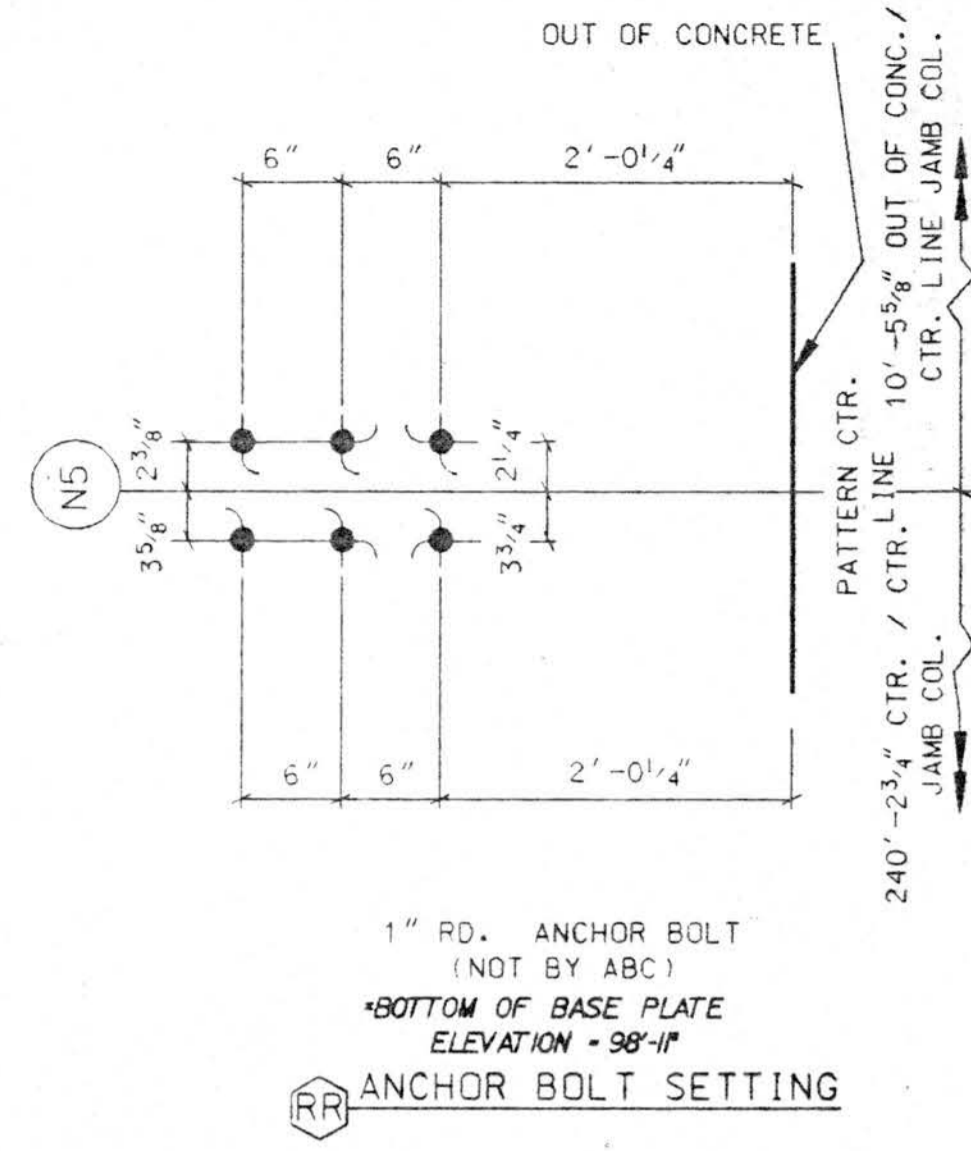
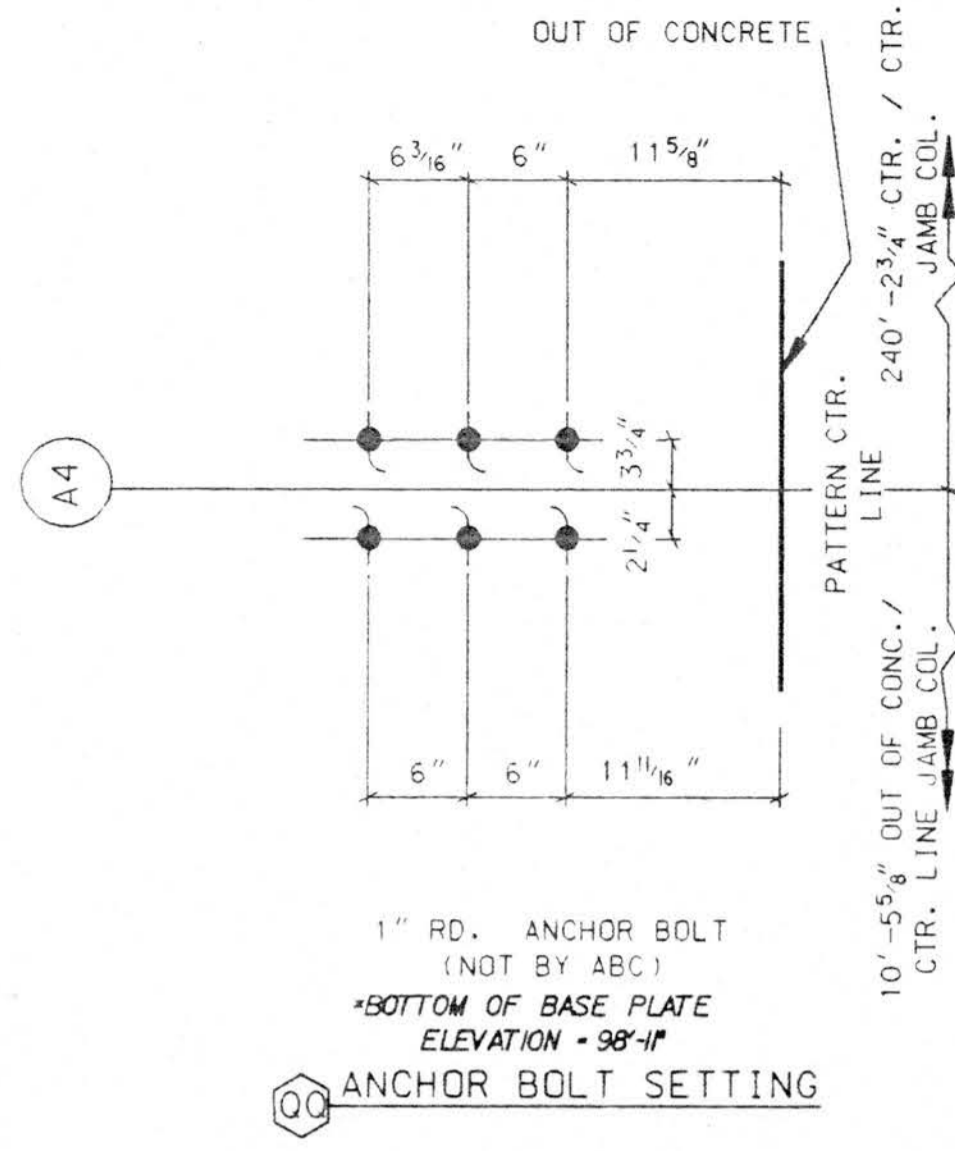
Copyright 1994 American Buildings Company All Rights Reserved

Builder:	Seattle Construction Services, Inc.		
Owner:	Alaska Industrial Development and Export Authority		
Building:	Line Maintenance Hangar		
Location:	Anchorage, Alaska		
DRAWN BY	LMC	JOB NO.	51-9290
CHECKED BY	RAY	DATE	2/94 DWG. AB-05

NO.	REVISION	MADE	CHK'D	DATE
A	FOR APPROVAL	LMC	RAY	3/94

LIL 85326





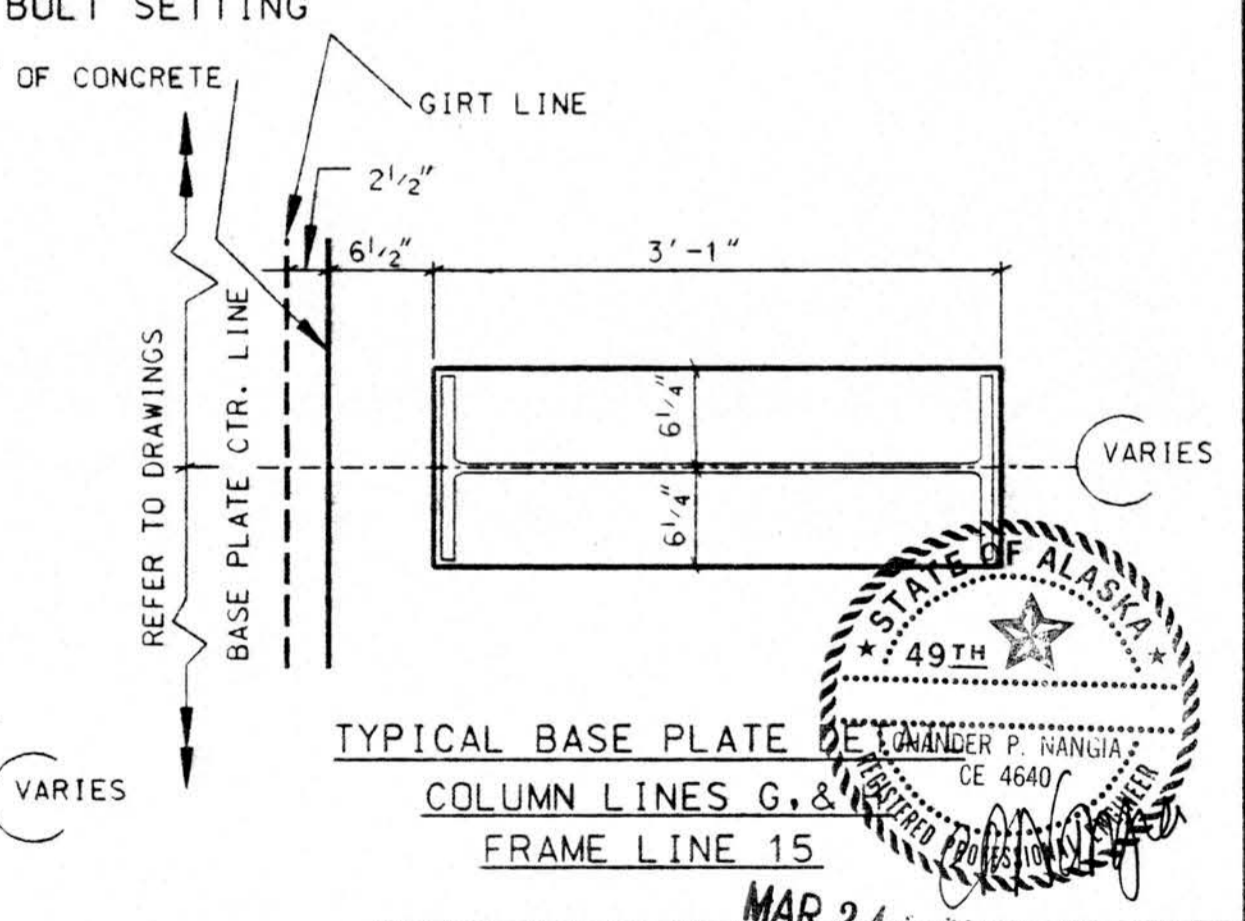
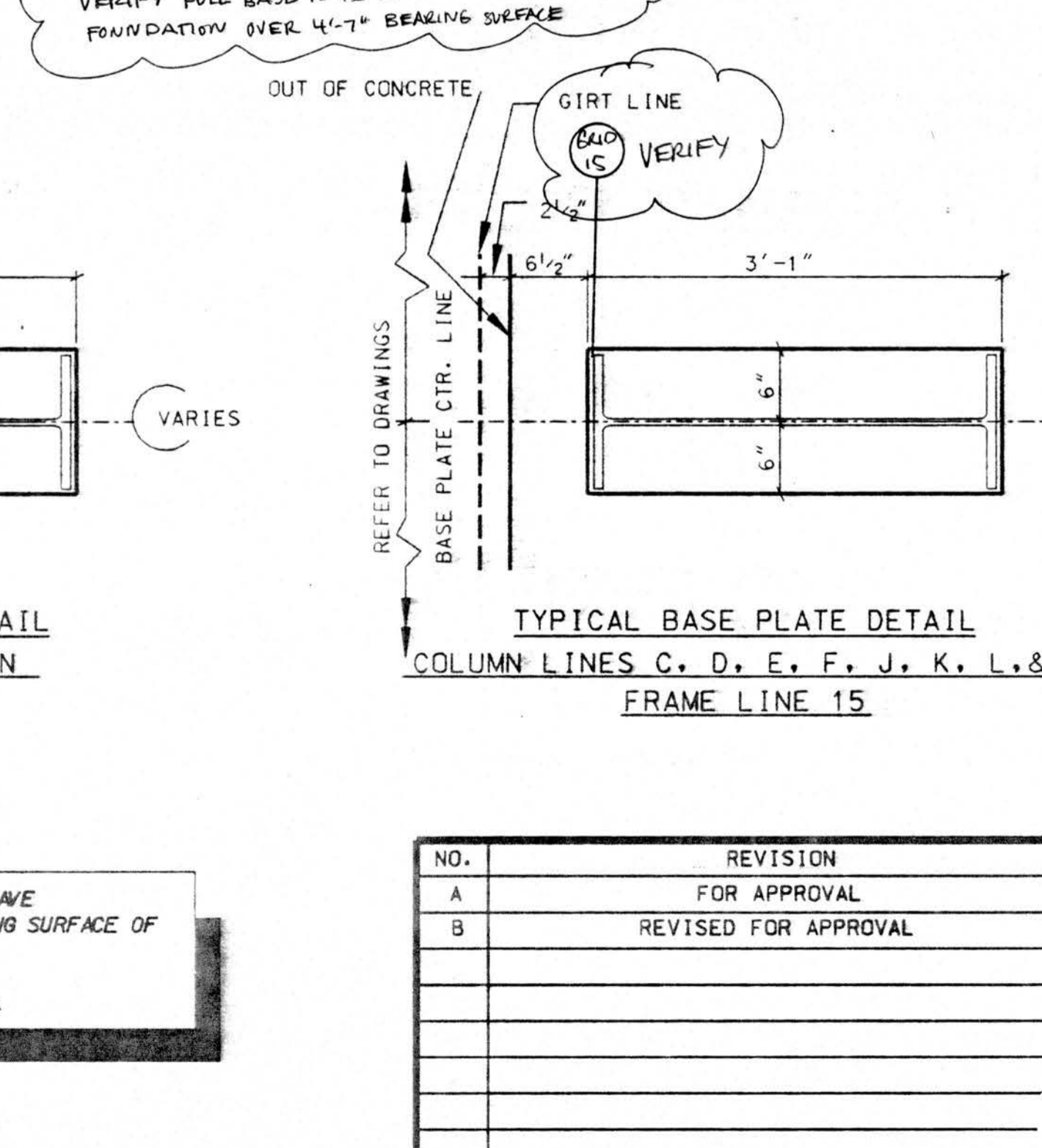
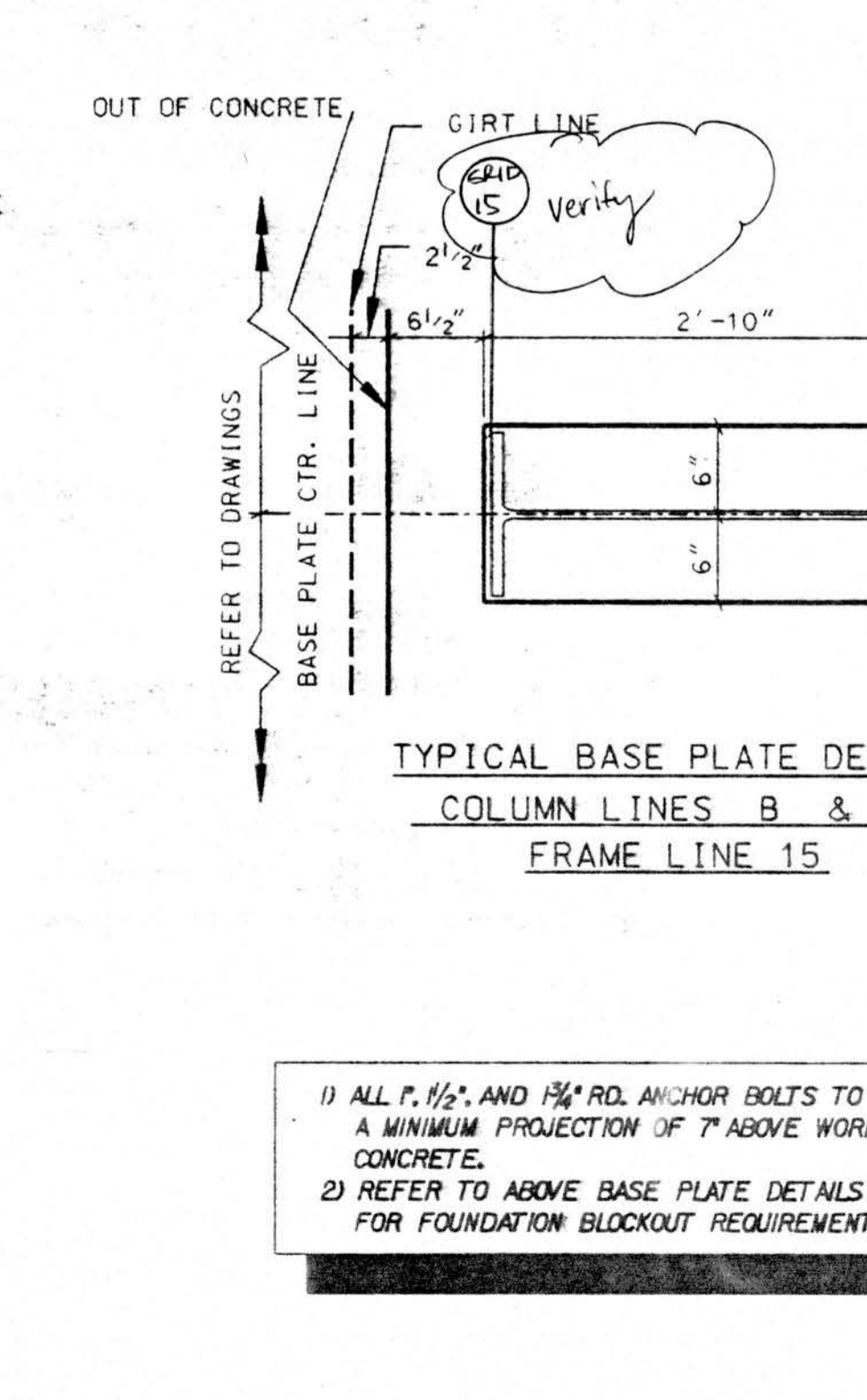
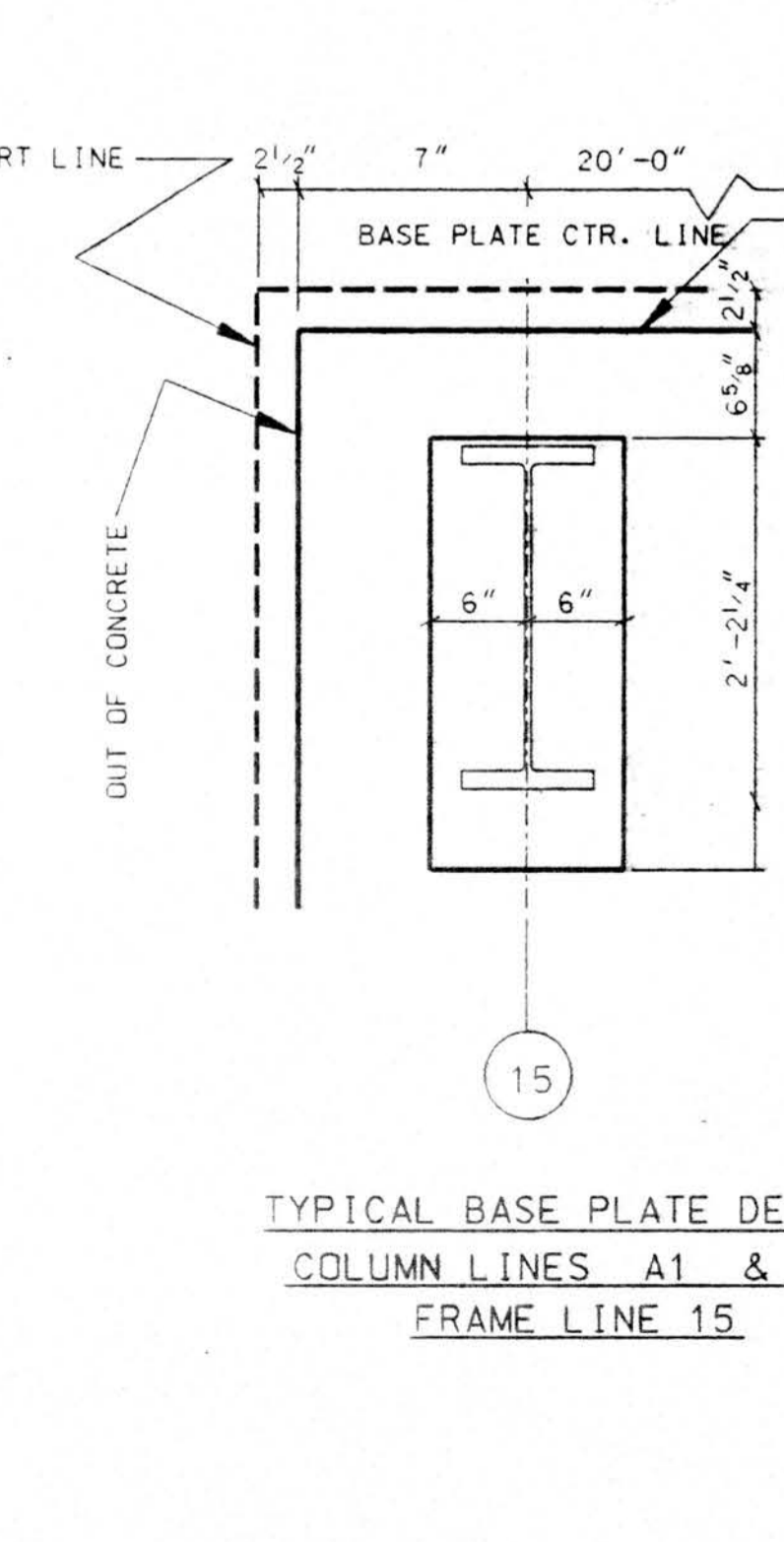
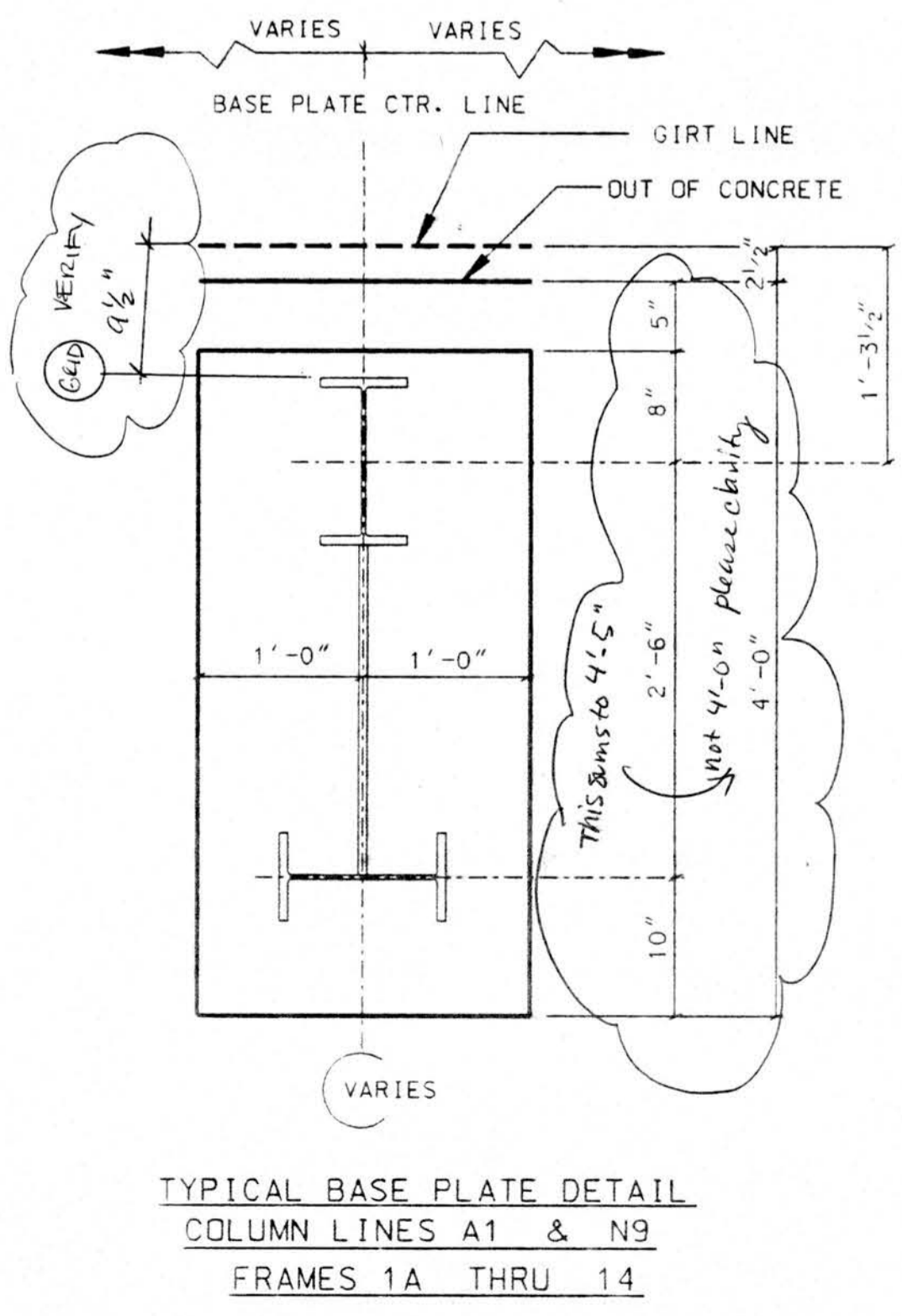
**SUBMITTAL REVIEW**

APPROVED
OTHER:
APPROVED AS NOTED
RETURN FOR RESUBMITTAL
DISAPPROVED - SEE REMARKS

Review is only for conformance with the design concept and with the information given in the contract documents. The contractor remains responsible for compliance with all requirements of the contract documents.

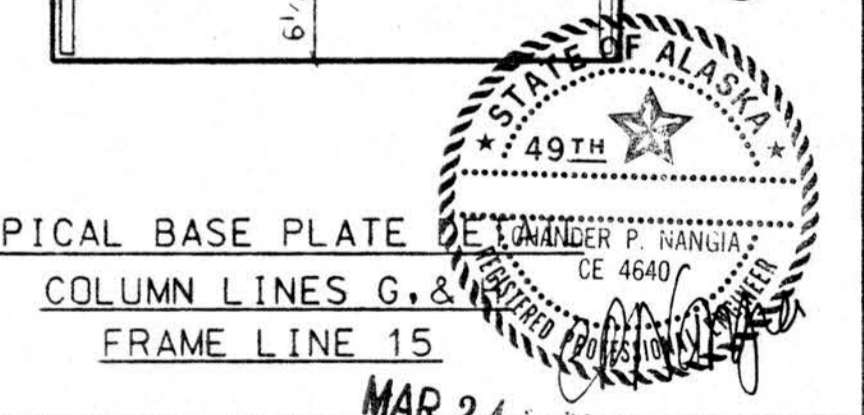
FRANKFURT • SHORT • BEITZ ASSOCIATES, P.C.  
 APR 28 1994  
 SUBMITTAL NO. 9126-13120A-02-02

CLIENT PLEASE NOTE MINIMUM COLUMN BLOCK-OUT REQUIREMENTS FOR FOUNDATION.  
 SAME COMMENT APPLIES: BLOCKOUT IS 4'-7"  
 VERIFY FULL BASE PLATE BEARING ON CONCRETE FOUNDATION OVER 4'-7" BEARING SURFACE



1) ALL 1/2" AND 3/4" RD. ANCHOR BOLTS TO HAVE A MINIMUM PROJECTION OF 7" ABOVE WORKING SURFACE OF CONCRETE.  
 2) REFER TO ABOVE BASE PLATE DETAILS FOR FOUNDATION BLOCKOUT REQUIREMENTS.

NO.	REVISION	MADE	CHK'D	DATE
A	FOR APPROVAL	LMC	RAY	3/94
B	REVISED FOR APPROVAL	LMC		3/94
		LIL	85327	



**AMERICAN BUILDINGS COMPANY**  
 Heavy Fabrication Division  
 Bellaire, Texas

© Copyright 1994 American Buildings Company All Rights Reserved  
 Builder: Seattle Construction Services, Inc.  
 Owner: Alaska Industrial Development and Export Authority  
 Building: Line Maintenance Hangar  
 Location: Anchorage, Alaska  
 DRAWN BY: LMC JOB NO. 51-9290  
 CHECKED BY: RAY DATE 2/94 DWG. AB-06

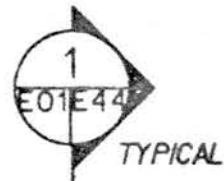


281'-7" OUT / OUT STEEL LINE

9'-1/2" 20'-0" 20'-0" 20'-0" 20'-0" 20'-0" 20'-0" 20'-0" 20'-0" 20'-0" 20'-0" 20'-0" 20'-0" 19'-5" 1'-4 1/2"

9.5" x 12 GA. PURLINS (TYP.)

EAVE STRUT (TYP.)



(N9)

(N)

(M)

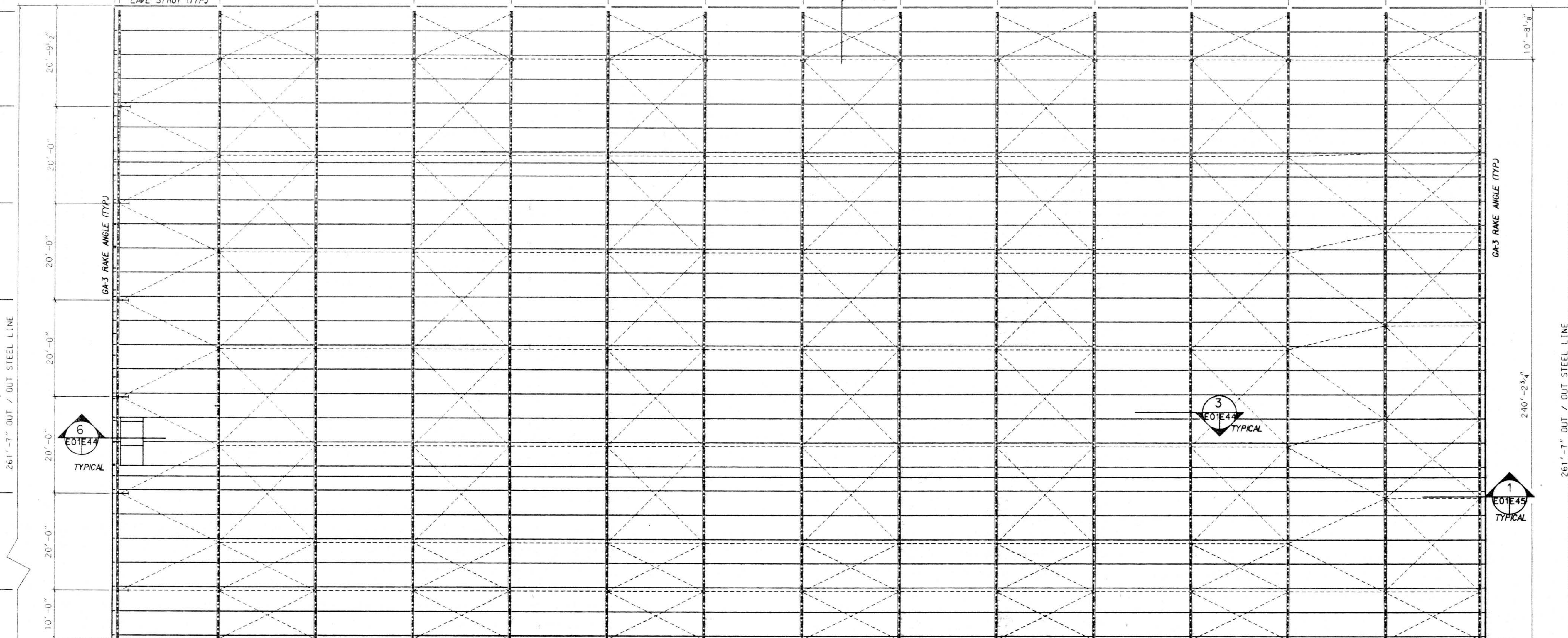
(L)

(K)

(J)

(H)

(N5)



261'-7" OUT / OUT STEEL LINE

261'-7" OUT / OUT STEEL LINE

6x3 RAKE ANGLE (TYP.)

240'-2 3/4"



SUBMITTAL REVIEW	
APPROVED	<input type="checkbox"/>
OTHER: APPROVED AS NOTED	<input type="checkbox"/>
RETURN FOR RESUBMITTAL	<input type="checkbox"/>
DISAPPROVED - SEE REMARKS	<input type="checkbox"/>

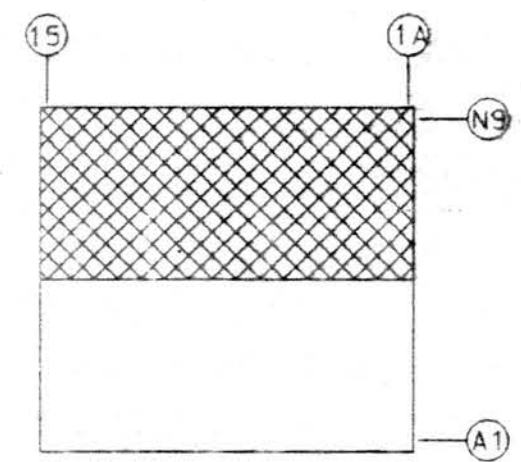
Review is only for conformance with the design concept and with the information given in the contract documents. The contractor remains responsible for compliance with all requirements of the contract documents.

FRANKFURT • SHORT • BAKER • SOGARD • P.C.  
By: RAN Date: APR 29 1994  
SUBMITTAL NO. 59126-B120A-02-02



**PARTIAL ROOF FRAMING PLAN (PURLINS / SECONDARY)**

REFER TO SHEET E-02 FOR BALANCE OF ROOF FRAMING / SECONDARY MEMBER PLAN  
REFER TO SHEET E-03 & E-04 FOR PARTIAL ROOF JOIST LAY-OUT AND PLAN  
REFER TO SHEET E-05 & E-06 FOR PARTIAL PRIMARY MEMBER / TOP CHORD BRACING PLAN  
REFER TO SHEET E-07 & E-08 FOR PARTIAL BOTTOM CHORD BRACING PLAN  
REFER TO SHEET E-43 & E-44 FOR FOR ADDITIONAL TYPICAL DETAILS



KEY PLAN

NO.	REVISION	MADE	CHK'D	DATE
A	FOR APPROVAL	LMC		3/94
		LIL	85328	

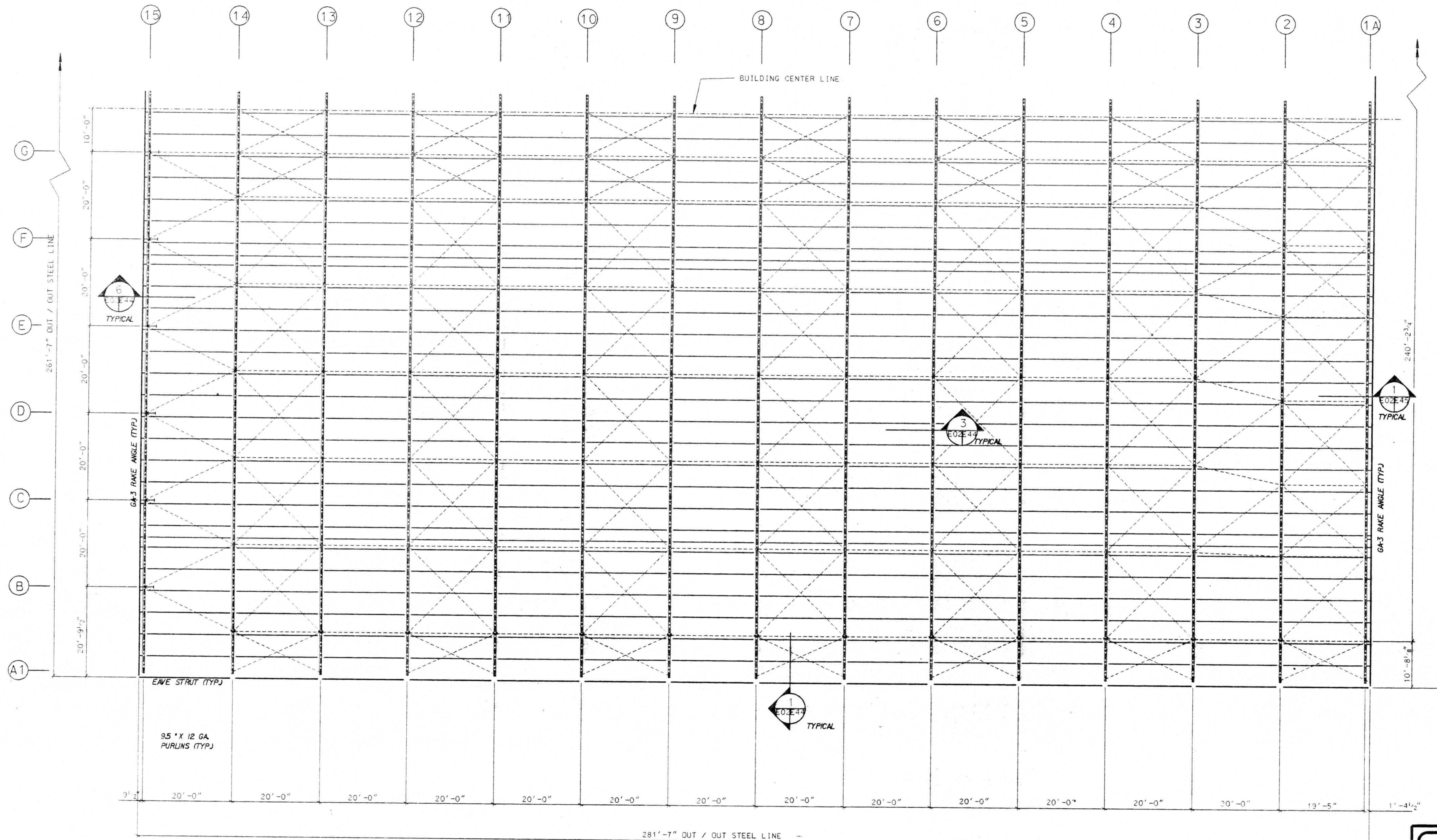
**AMERICAN BUILDINGS COMPANY**  
Heavy Fabrication Division  
Bellaire, Texas

© Copyright 1994  
American Buildings Company  
All Rights Reserved

Builder: Seattle Construction Services, Inc.  
Owner: Alaska Industrial Development and Export Authority  
Building: Line Maintenance Hangar  
Location: Anchorage, Alaska

DRAWN BY: LMC    JOB NO.: 51-9290  
CHECKED BY:        DATE: 2/94    DWG.: E-01





SUBMITTAL REVIEW	
<input type="checkbox"/>	APPROVED
<input checked="" type="checkbox"/>	OTHER APPROVED AS NOTED
<input type="checkbox"/>	RETURN FOR RESUBMITTAL
<input type="checkbox"/>	DISAPPROVED - SEE REMARKS

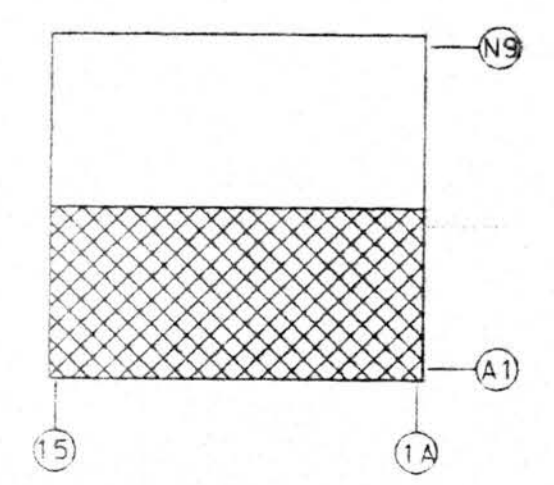
Review is only for conformance with the design concept and with the information given in the contract documents. The contractor remains responsible for compliance with all requirements of the contract documents.

By: **FRANKLIN SHORT BRUZA ASSOCIATES, P.C.**  
 Date: **APR 26 1994**  
 SUBMITTAL NO. **51-26-137-20A-02-02**



**PARTIAL ROOF FRAMING PLAN (PURLINS / SECONDARY)**

REFER TO SHEET E-01 FOR BALANCE OF ROOF FRAMING / SECONDARY MEMBER PLAN  
 REFER TO SHEET E-03 & E-04 FOR PARTIAL ROOF JOIST LAY-OUT AND PLAN  
 REFER TO SHEET E-05 & E-06 FOR PARTIAL PRIMARY MEMBER / TOP CHORD BRACING PLAN  
 REFER TO SHEET E-07 & E-08 FOR PARTIAL BOTTOM CHORD BRACING PLAN  
 REFER TO SHEET E-43 & E-44 FOR ADDITIONAL TYPICAL DETAILS



KEY PLAN

NO.	REVISION	MADE	CHK'D	DATE
A	FOR APPROVAL	LMC		3/94

 <b>AMERICAN BUILDINGS COMPANY</b> Heavy Fabrication Division Bellaire, Texas			
Builder: Seattle Construction Services, Inc.		Owner: Alaska Industrial Development and Export Authority	
Building: Line Maintenance Hangar		Location: Anchorage, Alaska	
DRAWN BY	LMC	JOB NO.	51-9290
CHECKED BY		DATE	2/94 DWG. E-02