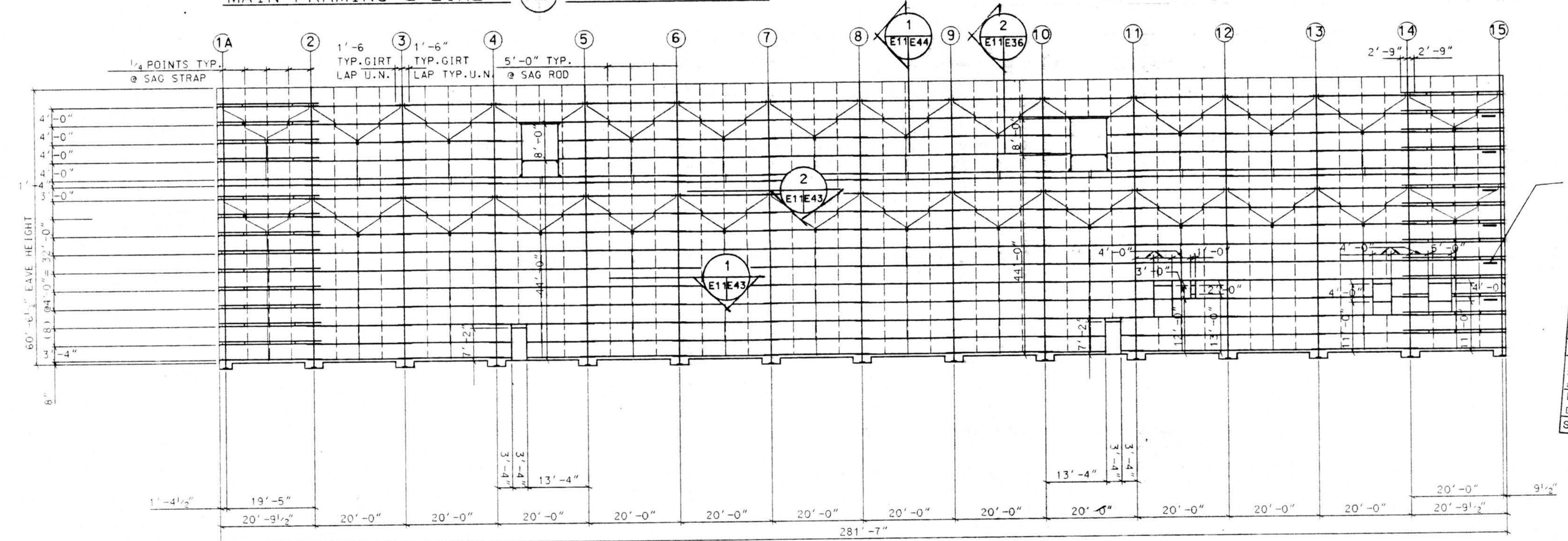


DIAGONAL HORIZONTAL INTERCHORD BRACING MEMBERS SIZES
 A 2L - L4" X 3" X 3/16"
 B 2L - L3 1/2" X 2 1/2" X 1/4"

MAIN FRAMING @ LINE (OUTER CHORD)



SECONDARY FRAMING @ LINE (N9)

1. GIRTS - END BAYS 9.5 Z 11 GA. INT BAYS 9.5 Z 15 GA. BELOW 47.3' 9.5 Z 14 GA. ABOVE 47.3'
2. ALL LAPS 1'-11 1/2" EXCEPT AT LINES 2 & 14 WHICH ARE 2'-9"
3. ALL LAP BOLTS - 1/2" A325 WITH WASHERS BOTH SIDES
4. DASHED LINES AT END BAYS - STD. PUNCHED STRAPPING ATTACHED TO THE INSIDE & OUTSIDE FLANGE OF THE GIRT WITH (2) #12 SCREWS
5. SAG RODS AS SHOWN ARE TYPICAL SIDEWALL BAYS (1/2" RODS)

* REFER TO SHEET E-43, E-44, & E-45 FOR ADDITIONAL TYPICAL DETAILS

SUBMITTAL REVIEW

<input type="checkbox"/>	APPROVED
<input type="checkbox"/>	OTHERS
<input checked="" type="checkbox"/>	APPROVED AS NOTED
<input type="checkbox"/>	RETURN FOR RESUBMITTAL
<input type="checkbox"/>	DISAPPROVED - SEE REMARKS

Review Only for conformance with the design concept and with the information given in the contract documents. The contractor remains responsible for compliance with all requirements of the contract documents.

FRANKFURT + SHORT + BRUNN + ASSOCIATES P.C.
 APR 2 8 1994
 SUBMITTAL NO. 1126-B120A-02-02



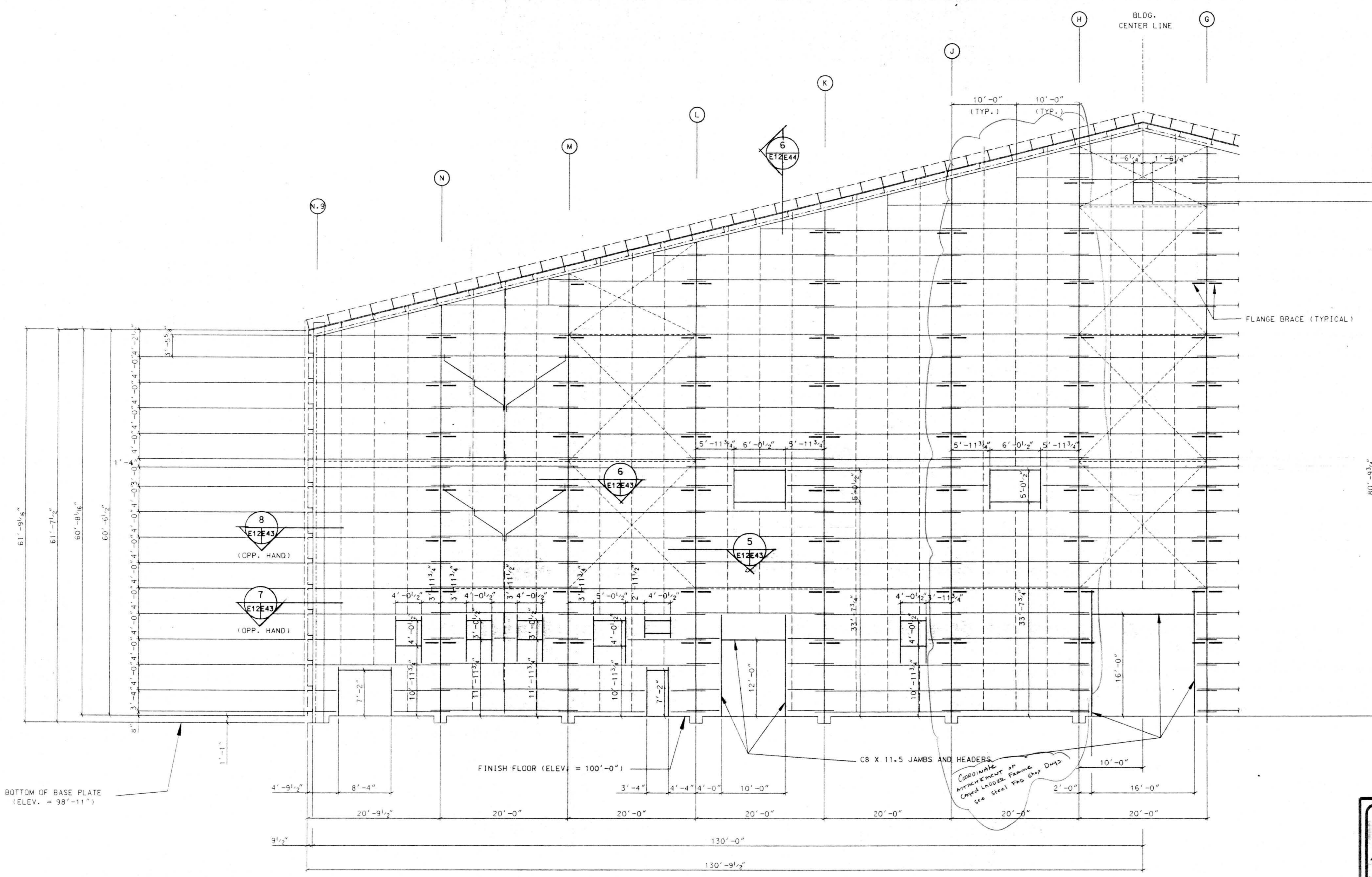
AMERICAN BUILDINGS COMPANY
 Heavy Fabrication Division
 Bellaire, Texas

© Copyright 1994
 American Buildings Company
 All Rights Reserved.

NO.	REVISION	MADE	CHK'D	DATE
A	FOR APPROVAL	LMC		3/94

Builder: Seattle Construction Services, Inc.
 Owner: Alaska Industrial Development and Export Authority
 Building: Line Maintenance Hangar
 Location: Anchorage, Alaska

DRAWN BY: LMC JOB NO.: 51-9290
 CHECKED BY: DATE: 2/94 DWG.: E-11



SUBMITTAL REVIEW

APPROVED	
OTHER APPROVED AS NOTED	
RETURN FOR RESUBMITTAL	
DISAPPROVED - SEE REMARKS	

Review is only for conformance with the design concept and with the information given in this contract documents. The contractor remains responsible for compliance with all requirements of the contract documents.
 FRANKFURT • SHORT • BRUNN • ASSOCIATES, P.C.
 SUBMITTAL NO. 1126-15120A-02-02

STATE OF ALASKA
 49TH
 CHANDER P. HANKJA
 CE 9640
 REGISTERED PROFESSIONAL ENGINEER
 MAR 24 1994

AMERICAN BUILDINGS COMPANY
 Heavy Fabrication Division
 Bellaire, Texas

PARTIAL SECONDARY FRAMING FOR LINE 15

1. SEE SIDEWALL ELEVATIONS FOR LAPS AND BOLT INFORMATION.
2. GIRTS BELOW 34.1' - END BAYS 9.5Z11GA, INT. BAYS 9.5Z15GA
3. GIRTS BETWEEN 34.1' TO 47.3' - END BAYS 9.5Z11GA - INT BAYS 9.5Z14/9@15/14GA
4. GIRTS ABOVE 47.3' - END BAYS 9.5Z11GA, INT BAYS 9.5Z14GA
5. DASHED LINES @ END BAYS TO BE SAME AS GIRT INSIDE & OUTSIDE FLANGE BRACING STRAP SHOWN AT SIDEWALL
6. SAG ROD AS SHOWN ARE 1/2" RODS (TYP. ALL BAYS AT ENDWALL AS SHOWN)

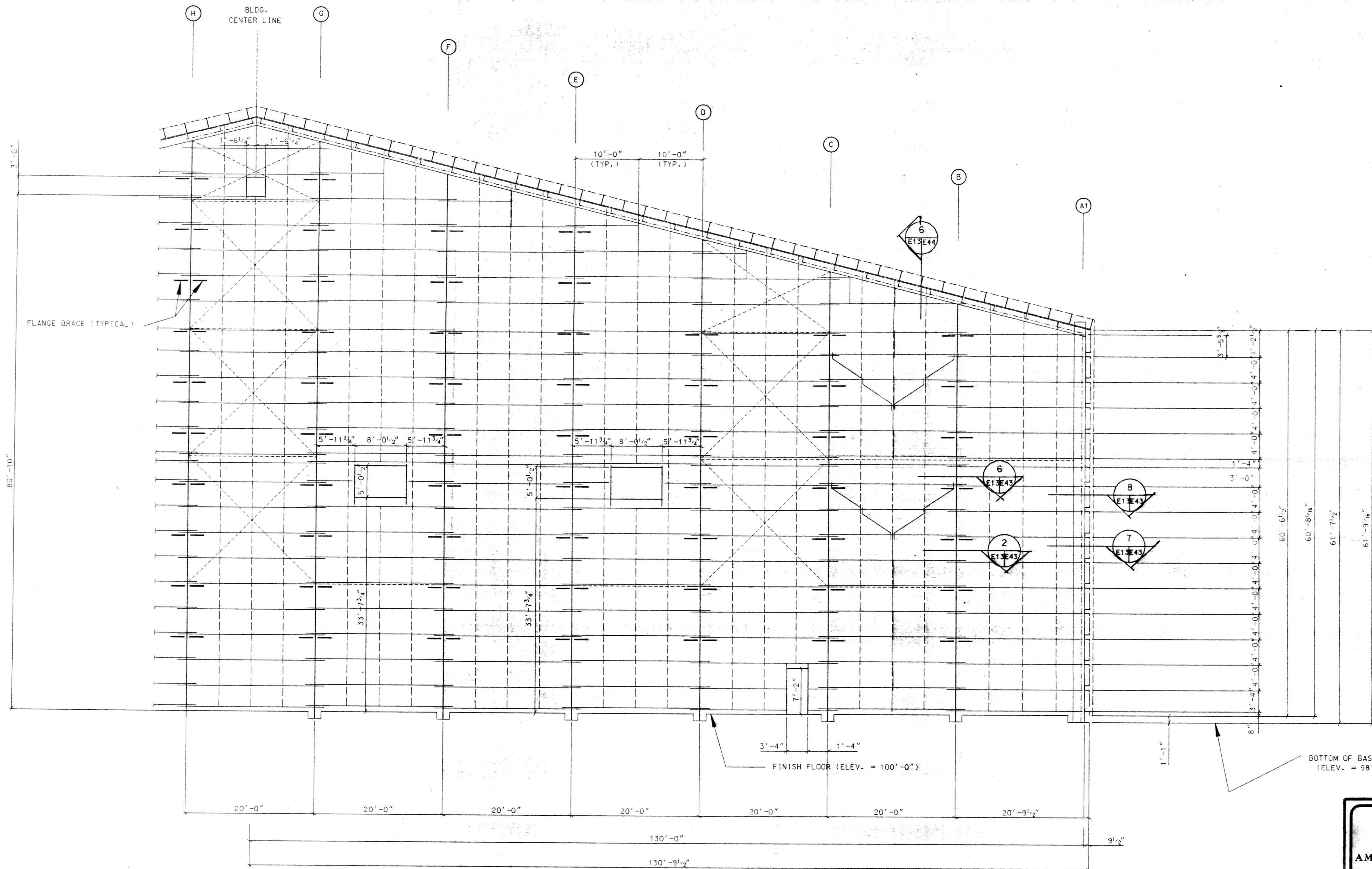
* REFER TO SHEET E-43, E-44, & E-45 FOR ADDITIONAL TYPICAL DETAILS

NO.	REVISION	MADE	CHK'D	DATE
A	FOR APPROVAL	LMC		3/94
		LIL	85339	

© Copyright 1994 American Buildings Company All Rights Reserved

Builder: Seattle Construction Services, Inc.
 Owner: Alaska Industrial Development and Export Authority
 Building: Line Maintenance Hangar
 Location: Anchorage, Alaska

DRAWN BY: LMC JOB NO.: 51-9290
 CHECKED BY: DATE 2/94 DWG. E12



SUBMITTAL REVIEW

APPROVED
OTHER APPROVED AS NOTED
RETURN FOR RESUBMITTAL
DISAPPROVED - SEE REMARKS

Review is only for conformance with the design concept and with the information given in the contract documents. The contractor remains responsible for compliance with all requirements of the contract documents.

FRANKFURT / SHORT & BRITZ ASSOCIATES, P.C.
 By: [Signature]
 MAR 24 1994
 SUBMITTAL NO. S-126-13120A-03-02



PARTIAL SECONDARY FRAMING FOR LINE 15

- SEE SIDEWALL ELEVATIONS FOR LAPS AND BOLT INFORMATION.
- GIRTS BELOW 34.1' - END BAYS 9.5Z11GA + INT. BAYS 9.5Z15GA
- GIRTS BETWEEN 34.1' TO 47.3' - END BAYS 9.5Z11GA - INT BAYS 9.5Z14/9@15/14GA
- GIRTS ABOVE 47.3' - END BAYS 9.5Z11GA + INT BAYS 9.5Z14GA
- DASHED LINES @ END BAYS TO BE SAME AS GIRT INSIDE & OUTSIDE
FLANGE BRACING STRAP SHOWN AT SIDEWALL
- SAG ROD AS SHOWN ARE 1/2" RODS (TYP. ALL BAYS AT ENDWALL AS SHOWN)

* REFER TO SHEET E-43, E-44, & E-45 FOR ADDITIONAL TYPICAL DETAILS

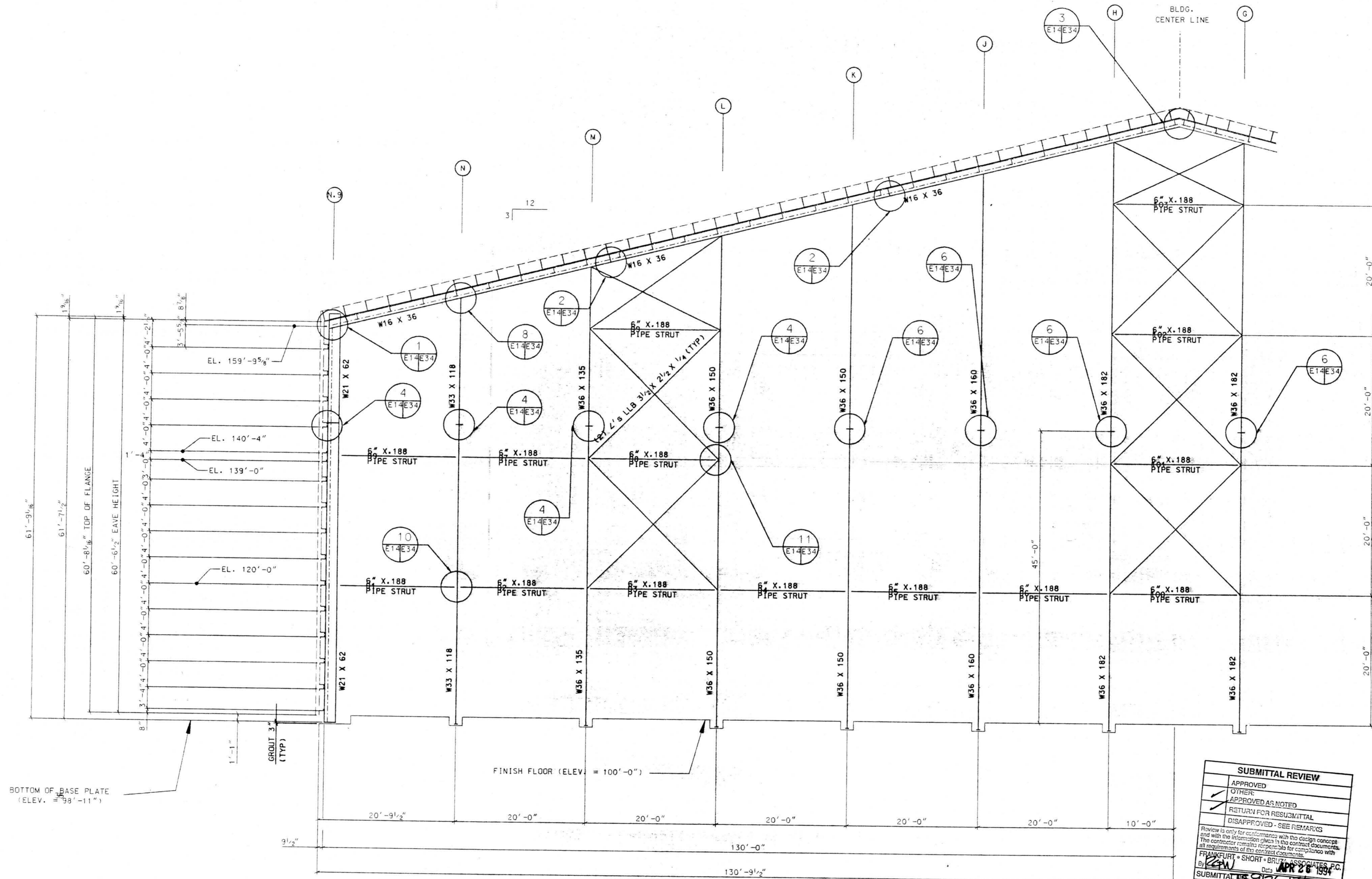
NO.	REVISION	MADE	CHK'D	DATE
A	FOR APPROVAL	LMC		3/94

AMERICAN BUILDINGS COMPANY
 Heavy Fabrication Division
 Bellaire, Texas

© Copyright 1994
 American Buildings Company
 All Rights Reserved

Builder: Seattle Construction Services, Inc.
 Owner: Alaska Industrial Development and Export Authority
 Building: Line Maintenance Hangar
 Location: Anchorage, Alaska

DRAWN BY	LMC	JOB NO.	51-9290
CHECKED BY		DATE	2/94
		DWG.	E13



BOTTOM OF BASE PLATE
(ELEV. = 99'-11")

FINISH FLOOR (ELEV. = 100'-0")

PARTIAL MAIN FRAMING FOR LINE 15
SEE E12 FOR GIRT FRAMING ELEVATION

SUBMITTAL REVIEW			
APPROVED			
OTHER			
APPROVED AS NOTED			
RETURN FOR RESUBMITTAL			
DISAPPROVED - SEE REMARKS			

Review is only for conformance with the design concept and with the information given in the contract documents. The contractor remains responsible for compliance with all requirements of the contract documents.

FRANKFURT - SHORT & BRUNN ASSOCIATES, P.C.
By: [Signature] Date: APR 26 1994
SUBMITTAL NO. 912613120A-02-02



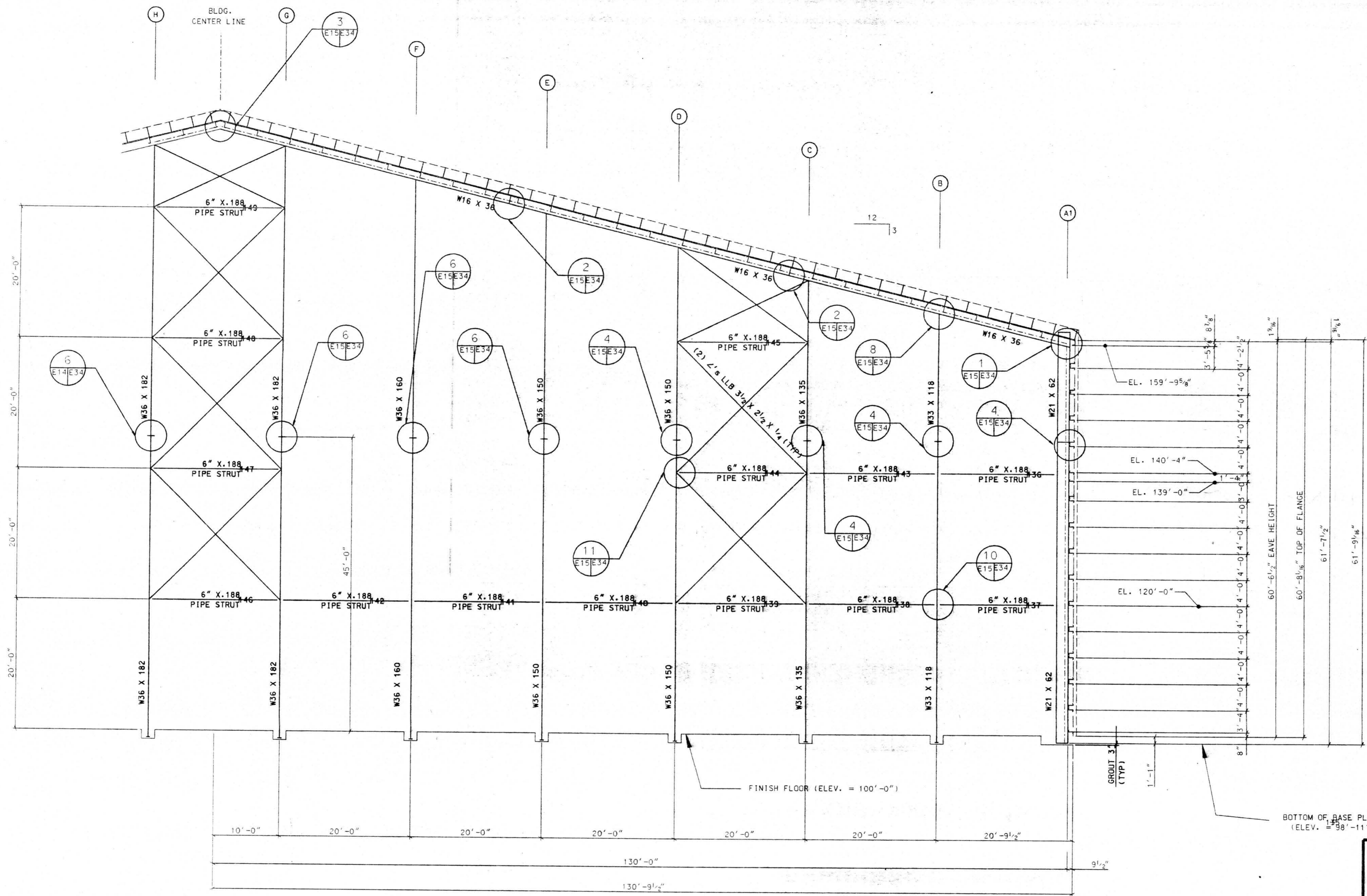
AMERICAN BUILDINGS COMPANY
Heavy Fabrication Division
Bellaire, Texas

NO.	REVISION	MADE	CHK'D	DATE
A	FOR APPROVAL	LMC		3/94

© Copyright 1994
American Buildings Company
All Rights Reserved

Builder: Seattle Construction Services, Inc.
Owner: Alaska Industrial Development and
Export Authority
Building: Line Maintenance Hangar
Location: Anchorage, Alaska

DRAWN BY: LMC JOB NO. 51-9290
CHECKED BY: DATE 2/94 DWG. E14



PARTIAL MAIN FRAMING FOR LINE 15

SEE E13 FOR GIRT FRAMING ELEVATION

SUBMITTAL REVIEW

<input type="checkbox"/>	APPROVED
<input checked="" type="checkbox"/>	OTHER APPROVED AS NOTED
<input checked="" type="checkbox"/>	RETURN FOR RESUBMITTAL
<input type="checkbox"/>	DISAPPROVED - SEE REMARKS

Review is only for conformance with the design concept and with the information placed in the contract documents. The contractor remains responsible for compliance with all requirements of the contract documents.

FRAMBERT, SHORT & BRYAN ASSOCIATES, P.C.
By: *[Signature]* Date: APR 26 1994
SUBMITTAL 15-9126-13120A-02-02

NO.	REVISION	MADE	CHK'D	DATE
A	FOR APPROVAL	LMC		3/94



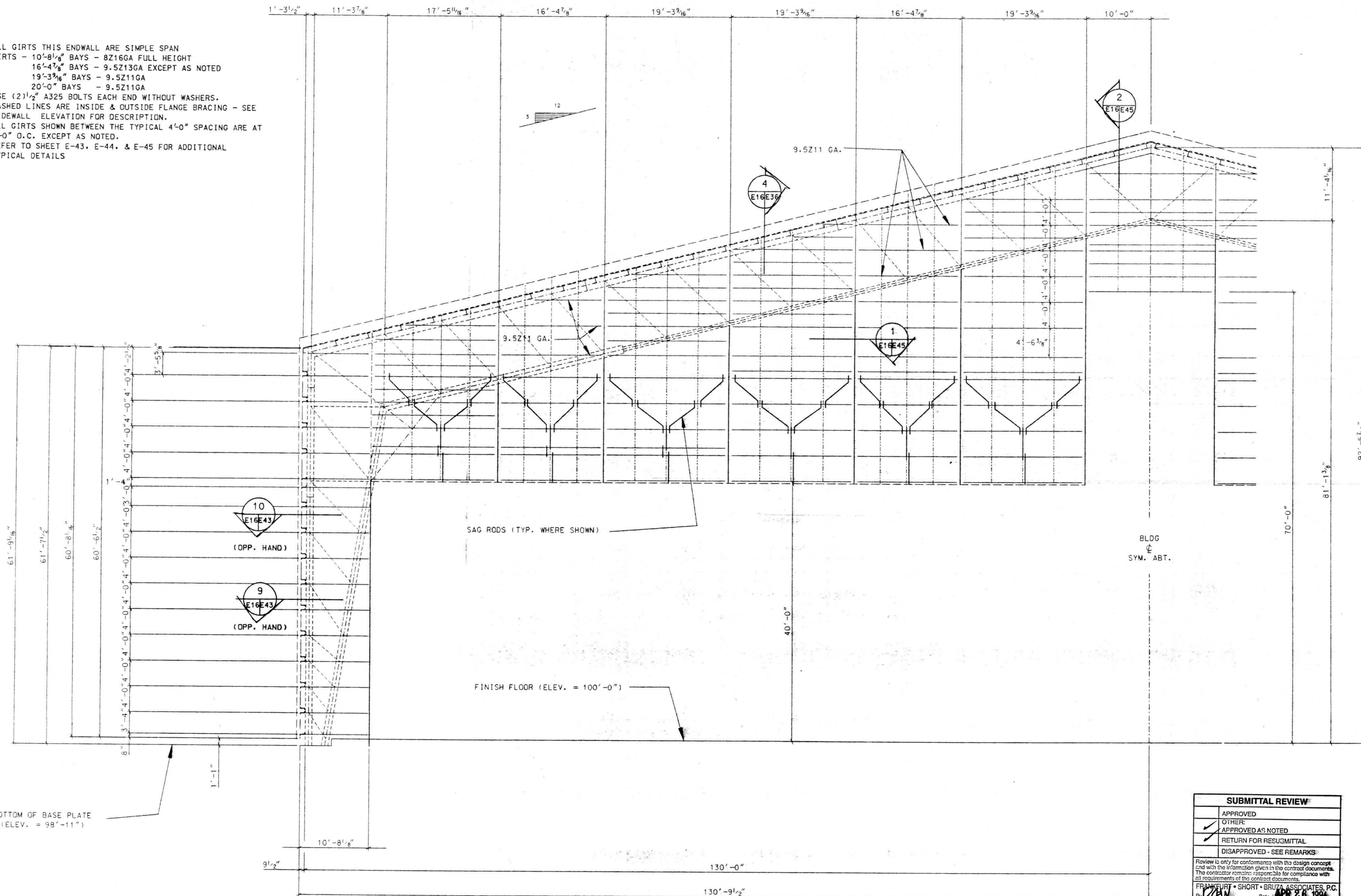
AMERICAN BUILDINGS COMPANY
Heavy Fabrication Division
Bellaire, Texas

© Copyright 1994
American Buildings Company
All Rights Reserved

Builder: Seattle Construction Services, Inc.
Owner: Alaska Industrial Development and
#51 Export Authority
Building: Line Maintenance Hangar
Location: Anchorage, Alaska

DRAWN BY	LMC	JOB NO.	51-9290
CHECKED BY		DATE	2/94 DWG. E15

1. ALL GIRTS THIS ENDWALL ARE SIMPLE SPAN
2. GIRTS - 10'-8 1/8" BAYS - 8Z16GA FULL HEIGHT
16'-4 1/8" BAYS - 9.5Z13GA EXCEPT AS NOTED
19'-3 3/8" BAYS - 9.5Z11GA
20'-0" BAYS - 9.5Z11GA
3. USE (2) 1/2" A325 BOLTS EACH END WITHOUT WASHERS.
4. DASHED LINES ARE INSIDE & OUTSIDE FLANGE BRACING - SEE SIDEWALL ELEVATION FOR DESCRIPTION.
5. ALL GIRTS SHOWN BETWEEN THE TYPICAL 4'-0" SPACING ARE AT 2'-0" O.C. EXCEPT AS NOTED.
6. REFER TO SHEET E-43, E-44, & E-45 FOR ADDITIONAL TYPICAL DETAILS



PARTIAL SECONDARY FRAMING FOR LINE 1

SUBMITTAL REVIEW	
<input type="checkbox"/>	APPROVED
<input checked="" type="checkbox"/>	OTHER:
<input checked="" type="checkbox"/>	APPROVED AS NOTED
<input type="checkbox"/>	RETURN FOR RESUBMITTAL
<input type="checkbox"/>	DISAPPROVED - SEE REMARKS

Review is only for conformance with the design concept and with the information given in the contract documents. The contractor remains responsible for compliance with all requirements of the contract documents.

FRANKFURT • SHORT • BRUZA ASSOCIATES, P.C.
By: *[Signature]* Date: **APR 26 1994**
SUBMITTAL NO. **1126-BI20A-02-02**



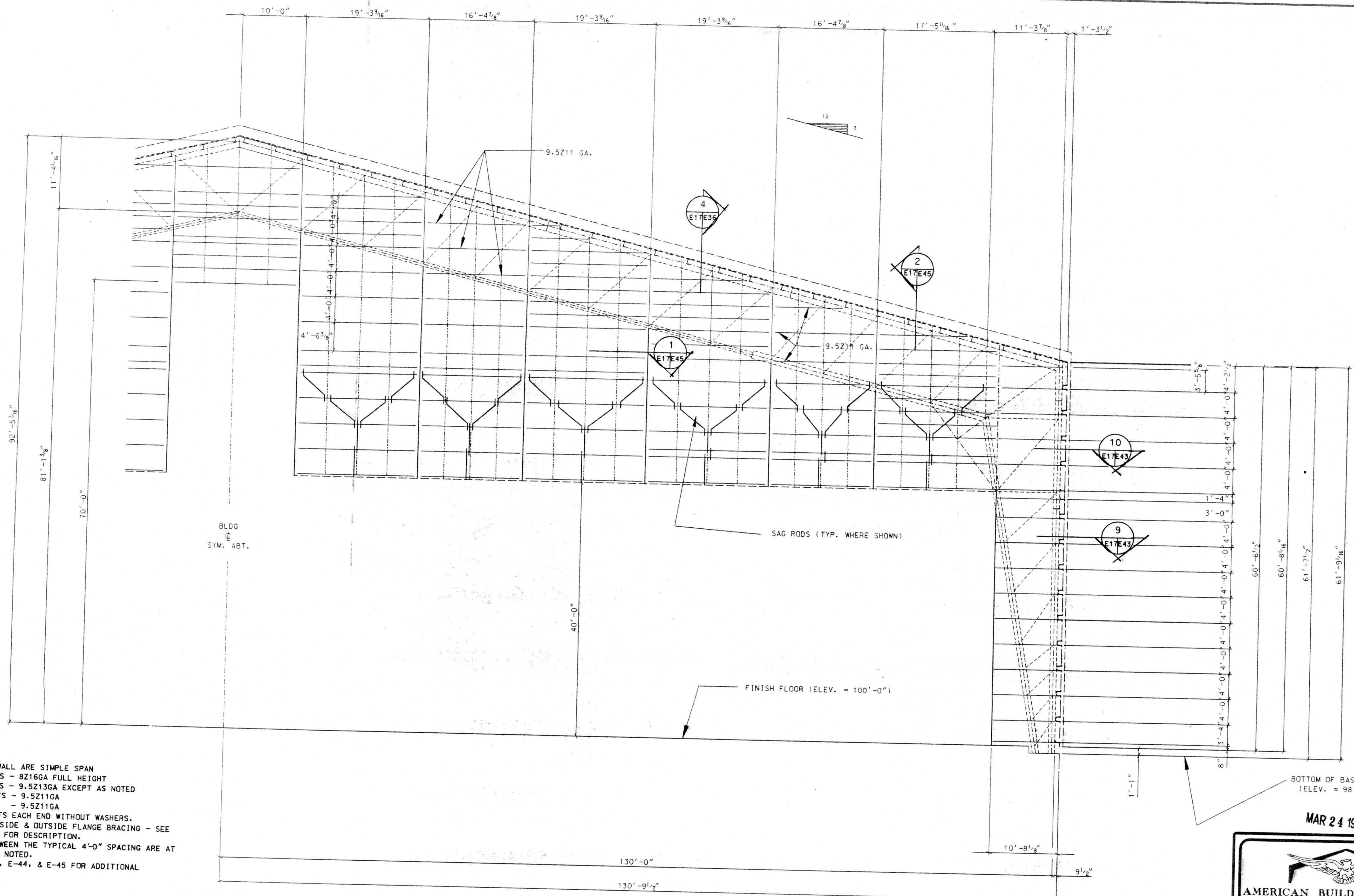
MAR 24 1994

AMERICAN BUILDINGS COMPANY
Heavy Fabrication Division
Bellaire, Texas

NO.	REVISION	MADE	CHK'D	DATE
A	FOR APPROVAL	LMC		3/94
		LIL	85343	

Builder: Seattle Construction Services, Inc.
Owner: Alaska Industrial Development and Export Authority
Building: Line Maintenance Hangar
Location: Anchorage, Alaska

DRAWN BY: LMC JOB NO.: 51-9290
CHECKED BY: DATE: 2/94 DWG. E16



1. ALL GIRTS THIS ENDWALL ARE SIMPLE SPAN
2. GIRTS - 10'-8 1/8" BAYS - 8Z16GA FULL HEIGHT
16'-4 7/8" BAYS - 9.5Z13GA EXCEPT AS NOTED
19'-3 3/16" BAYS - 9.5Z11GA
20'-0" BAYS - 9.5Z11GA
3. USE (2) 1/2" A325 BOLTS EACH END WITHOUT WASHERS.
4. DASHED LINES ARE INSIDE & OUTSIDE FLANGE BRACING - SEE SIDEWALL ELEVATION FOR DESCRIPTION.
5. ALL GIRTS SHOWN BETWEEN THE TYPICAL 4'-0" SPACING ARE AT 2'-0" O.C. EXCEPT AS NOTED.
6. REFER TO SHEET E-43, E-44, & E-45 FOR ADDITIONAL TYPICAL DETAILS

PARTIAL SECONDARY FRAMING FOR LINE 1

SUBMITTAL REVIEW	
<input type="checkbox"/>	APPROVED
<input checked="" type="checkbox"/>	OTHER: APPROVED AS NOTED
<input checked="" type="checkbox"/>	RETURN FOR RESUBMITTAL
<input type="checkbox"/>	DISAPPROVED - SEE REMARKS

Review is only for compliance with the design concept and with the information given in the contract documents. The contractor remains responsible for compliance with all requirements of the contract documents.

FRANKFURT • SHORT • BRUZZA ASSOCIATES, P.C.
By: *[Signature]* Date: APR 26 1994
SUBMITTAL: 94-112-1310A-02-02

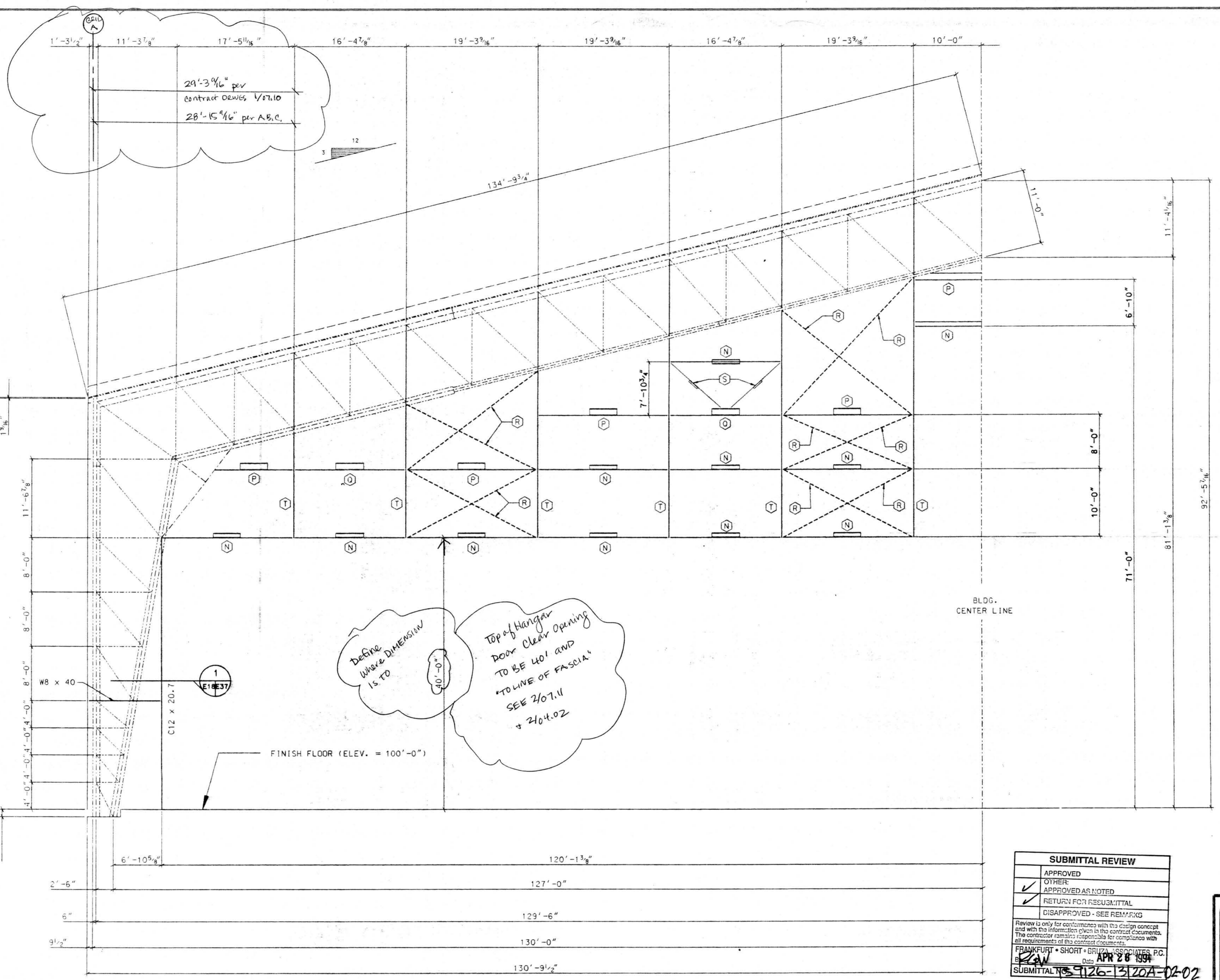
NO.	REVISION	MADE	CHK'D	DATE
A	FOR APPROVAL	LMC		3/94



AMERICAN BUILDINGS COMPANY
Heavy Fabrication Division
Bellaire, Texas

Builder:	Seattle Construction Services, Inc.
Owner:	Alaska Industrial Development and Export Authority
Building:	Line Maintenance Hangar
Location:	Anchorage, Alaska
DRAWN BY:	LMC JOB NO. 51-9290
CHECKED BY:	DATE 2/94 DWG. E17

- (N) = W8 x 18
- (P) = W12 x 16
- (C) = W12 x 19
- (R) = (2) L 3 1/2 x 2 1/2 x 1/4
- (S) = (2) L 3 x 2 x 3/16
- (T) = W24 x 55



PARTIAL PRIMARY FRAMING AT LINE 1A

SUBMITTAL REVIEW

APPROVED
OTHER:
APPROVED AS NOTED
RETURN FOR RESUBMITTAL
DISAPPROVED - SEE REMARKS

Review is only for conformance with the design concept and with the information given in the contract documents. The contractor remains responsible for compliance with all requirements of the contract documents.

FRANKFURT • SHORT • BRUNN • ASSOCIATES, P.C.
 APR 28 1994
 SUBMITTAL 9126-13120A-02-02



AMERICAN BUILDINGS COMPANY
 Heavy Fabrication Division
 Bellaire, Texas

NO.	REVISION	MADE	CHK'D	DATE
A	FOR APPROVAL	LMC		3/94

© Copyright 1994
 American Buildings Company
 All Rights Reserved

Builder: Seattle Construction Services, Inc.
 Owner: Alaska Industrial Development and Export Authority
 Building: Line Maintenance Hangar
 Location: Anchorage, Alaska

DRAWN BY	LMC	JOB NO.	51-9290
CHECKED BY		DATE	2/94 DWG. E18