

Date: **January 30, 2026**
Project: **Shageluk Bulk Fuel Upgrades**
Solicitation No.: **ITB 26030**
Addendum No.: **02**

TO ALL PLAN HOLDERS:

The following changes, additions, clarifications, and/or deletions are hereby made a part of the ITB Documents for the above noted project, fully and completely as if the same were fully contained therein. All other terms, conditions, and specifications of the original Invitation to Bid remain unchanged.

Bidders must acknowledge receipt of this addendum prior to the hour and date set for the bid due date. This addendum must be acknowledged by email.

The modifications directed by this Addendum Two are described on this page.

CONTRACT PROVISIONS AND SPECIFICATIONS

1. The ITB Due date is hereby extended to **February 10, 2026, at 2 PM AKST.**
2. The response to **Question 17** in **Addendum 1** is **voided, and replaced with the following.**

Question: What is the price for the onsite gravel?

Answer: Gravel will be available to the contractor as required to complete the construction of both tank farm facilities as shown in the Design Documents. There will be no additional cost to the Contractor for gravel. This will be an Owner-Furnished material, no payment from the contractor will be necessary

3. **Question:** Sheet G1.6 shows MV-1, MV-2B2, and MV-3B. These motor valves are not shown on C1.8 pr E2.4. Please revise the drawings to show the complete system.

Answer: Design Drawings E2.3 and E2.4 are hereby replaced with revised sheets of the same numbers included with this Addendum. All revisions are clouded and identify the required motorized valves and flow switches.

QUESTIONS AND ANSWERS:

The ITB Package is hereby clarified, changed or modified by the following:

and is replaced with the following:

4. **Question:** What is the cost of the owner furnished material for the project. 00 50 00 SC-5.4.2d builders risk insurance requires that we include coverage for owner furnished materials in the builder's risk policy?

Answer: \$523,800

5. **Question:** Can you provide a list of owner furnished materials with their weights and dimensions. Weight and dimensions can affect barging costs.

Answer: See Section 01 64 00 Receipt of Owner Furnished Materials and Provided Tank Shop Drawings. The tanks weigh 32,250 for split tanks and 27,250 for single compartment.

6. **Question:** After fuel is transferred to the temporary storage tank for power plant, who is responsible for fuel needed for the power plant operation?

Answer: See Section 01 51 19 Temporary Fuel Storage & Dispensing. The Contractor is not responsible for the purchase of AVEC fuel.

7. **Question:** Will both base bid A and bae bid B be awarded together? Mobe costs could be affected if the base bids could be awarded separately.

Answer: Base Bid Schedule A & B will be awarded under the same contract concurrently.

8. **Question:** Do all bids need to be mailed, or hand delivered? Or can they be submitted through email?

Answer: Bids may be electronically delivered to aeaprourement@akenergyauthority.org - Or may be mailed or hand delivered as noted in Specification Section 00 02 00 Invitation to Bid.

9. **Question:** What is the expected fuel delivery day in the fall on 2026?

Answer: Fuel is typically delivered August 1st – 15th but depends on river levels and barge availability. Coordinate with Ruby Marine.

10. **Question:** Add 1 question 17 refers to a previously negotiated rate of \$30,000 for onsite gravel. Who is responsible for this payment?

Answer: See **CONTRACT PROVISIONS AND SPECIFICATIONS** in this addendum.

11. Question: Is the cost of the aggregate under Alt 1 included in the aggregate price in bid ADD Bid question 17?

Answer: See **CONTRACT PROVISIONS AND SPECIFICATIONS** in this addendum.

12. Question: 33 52 13 2.6D states that the POS system is NIC. I do not see any provision for connection from the dispenser and the future POS equipment to enable fuel sales. How is the fuel dispenser to be enabled for product sales?

Answer: The design intent is for the Contractor to provide dispensers as specified in 33 52 13 Part 2.6.A. These Bennett dispensers are to be factory equipped with a local preset keypad that allows the fuel price to be set. Credit Card sales will be conducted by the Attendant via a 3rd party system (Square, Clover, etc.) that has no direct link to the dispenser.

13. Question: E4.1/4 calls for a 2/0 ground ring conductor, E2.5 and E2.2 call for a #2 ground conductor. Please clarify the size of ground wire.

Answer: The ground ring should be #2/0. #2 conductors are to the steel secondary containment dike.

14. Question: E2.5 general note 5 calls for a #6 bonding strap to the gates, E4.1 material list #2 calls for a #2 welding cable on the gates

Answer: Provide #6 bonding strap as indicated on sheet E2.5

15. Question: E 4.3 note #9 call for the use of Stainless-steel strut. Specification 26 05 09 2.2B approves the use of Galvanized Strut. Please clarify the correct product for the job.

Answer: Provide Stainless-Steel Strut where specifically indicated on the plans. Galvanized Strut can be used in all other locations, not specifically called out as Stainless-steel.

16. Question: C3.1/1 indicate sign type 14 on tie inside of the enclosure door. Sheet G1.3 sign schedule does not have a sign type 14. Please clarify the required sign.

Answer: Sheet C3.1, Detail 1: Please replace the reference to "SIGN 14" and replace with "SIGN 11" which is the Placard for "BULK TRANSFER/FLEET DISPENSING" on Sheet G1.3.

END OF ADDENDUM #02

GENERAL NOTES:

1. ALL ELECTRICAL CONDUIT AND CONDUCTORS WITHIN DIKED SECONDARY CONTAINMENT SHALL CONFORM TO THE REQUIREMENTS OF THE NEC FOR CLASSIFIED HAZARDOUS LOCATIONS AND SHALL BE ELEVATED TO MATCH THE TOP OF DIKE HEIGHT UNLESS NOTED OTHERWISE.

SHEET NOTES:

1. LOCATION OF BACKBOARD MOUNTED CITY ELECTRICAL SERVICE AND PANEL 'A'. CP-1 MOUNTED TO OPPOSITE SIDE.
2. LOCATION OF BACKBOARD MOUNTED CORP ELECTRICAL SERVICE AND PANEL 'B'. CP-2 MOUNTED TO OPPOSITE SIDE.
3. LOCATION OF BACKBOARD MOUNTED BIG WHEEL ELECTRICAL SERVICE AND PANEL 'C'. CP-3 MOUNTED TO OPPOSITE SIDE.

4. PROVIDE CONNECTION TO LUMINAIRE FROM NEARBY PANELBOARD. PROVIDE CONNECTION TO PHOTO CELL AND LIGHT SWITCH FOR CONTROL.

5. PROVIDE CONNECTION TO CONVENIENCE RECEPTACLE FROM SERVICE/PANELBOARD INDICATED.

6. PROVIDE AERIAL POWER RUN FROM 35' POLE TO 35' POLE FOR CONNECTION TO LIGHTING AND CONVENIENCE RECEPTACLE.

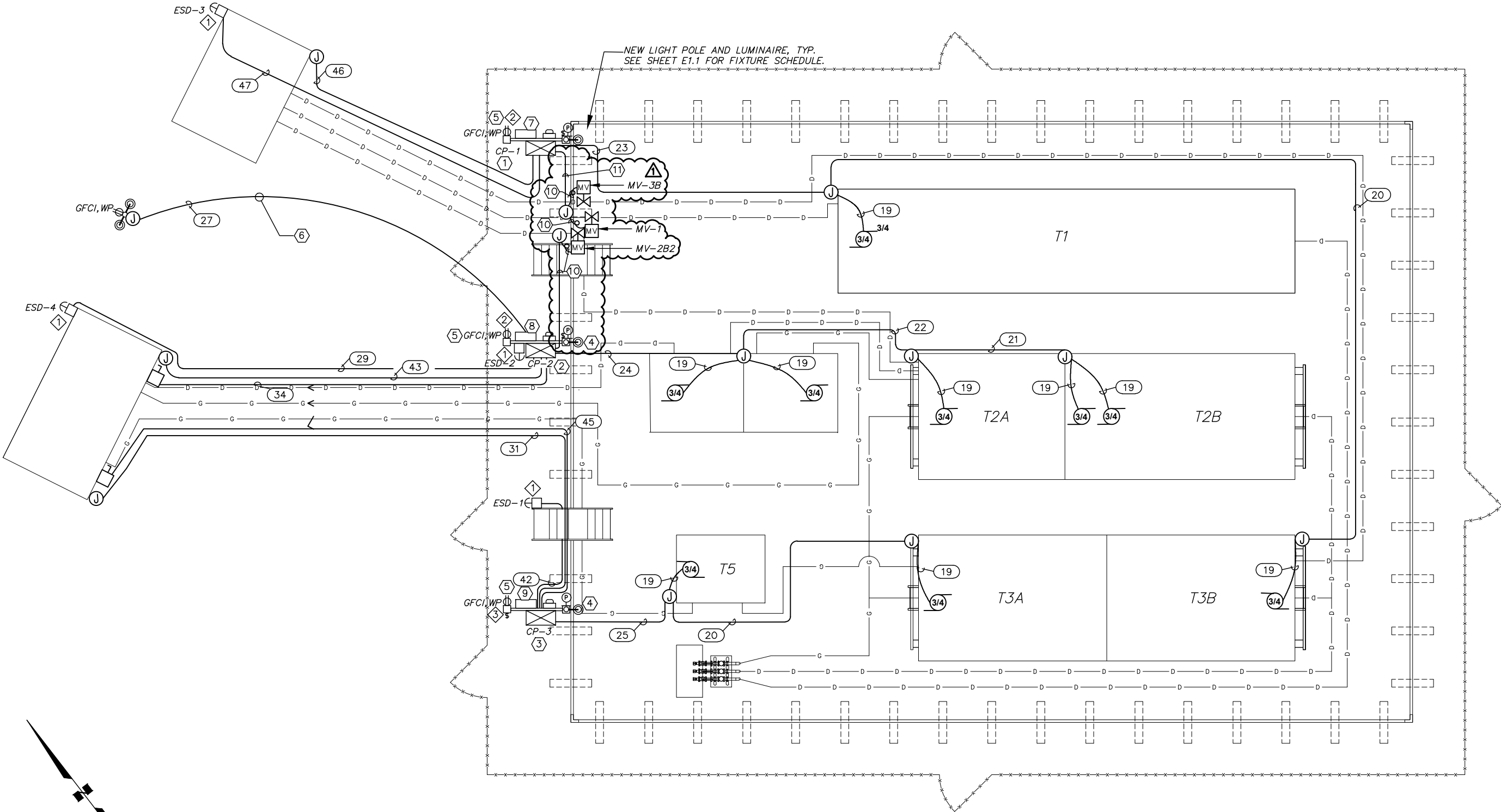
7. PANEL 'A'; SEE E1.2.

8. PANEL 'B'; SEE E1.3.

9. PANEL 'C'; SEE E1.4.

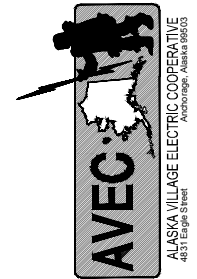
10. 1"C, 7#12 (6MV, G)

11. 1-1/2"C, 13#12 (12MV, G)



COLOCATED TANK FARM ELECTRICAL PLAN

5' 0' 5' 10'



SHAGELUK BULK FUEL UPGRADES
COLOCATED TANK FARM ELECTRICAL
PLAN
SHAGELUK, ALASKA

NO.	REVISION	BY	DATE
A	ISSUED FOR BIDDING	BC	3/31/25
B	ADDED MOTORIZED VALVES	TK	1/29/26
C			
D			
E			

Plot: 1/29/26	Designed: BC	Drawn: ESC, JB	Approved: BC
---------------	--------------	----------------	--------------

Sheet No. E2.3

File: J:\JobsData\30704.44 Shageluk Bfu Design\00 Cadd 2019\01 Working Set\03 Electrical\30704.44 Tank Farm Plans.dwg

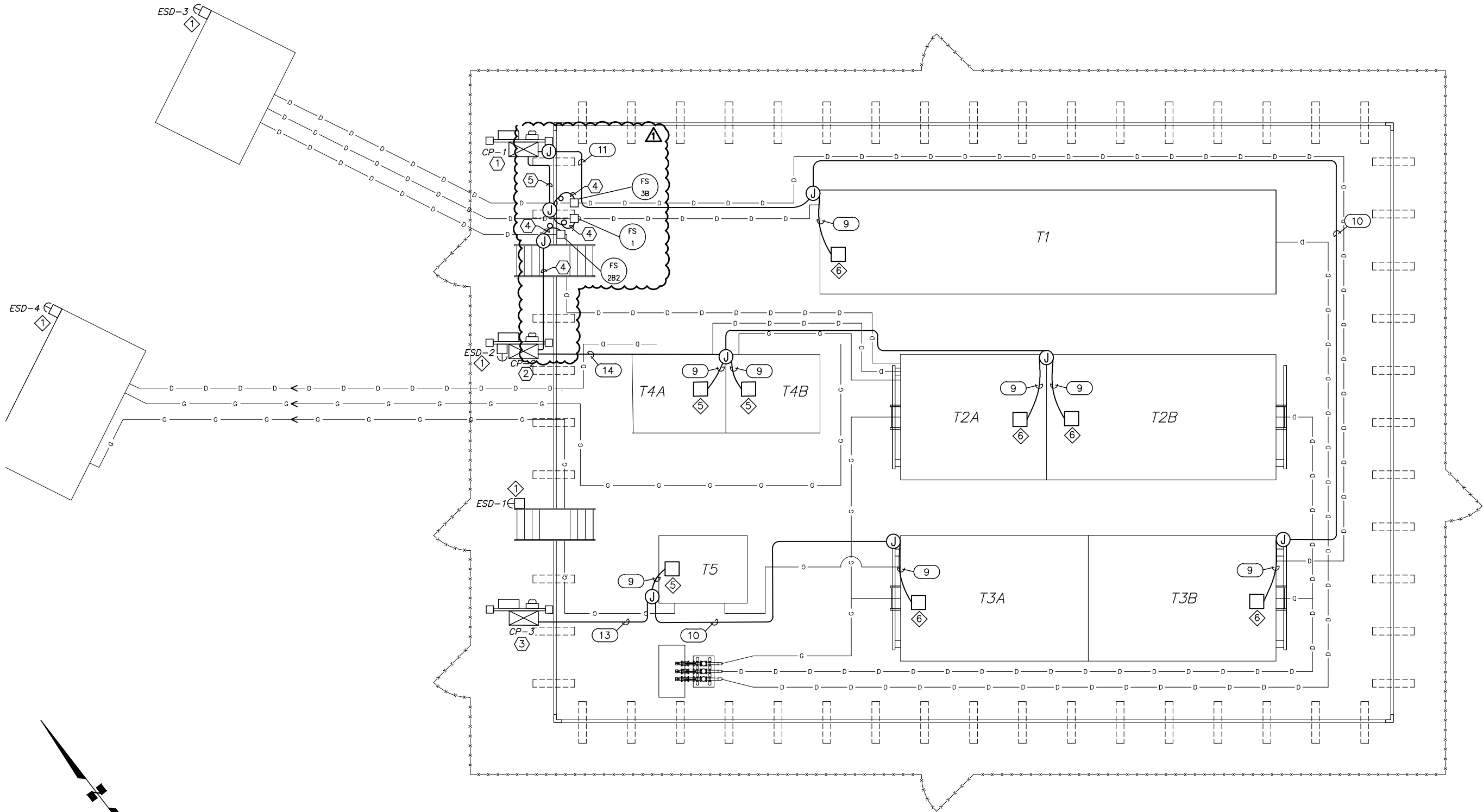
GENERAL NOTES:

1. SEE GENERAL NOTES ON SHEET E2.3..

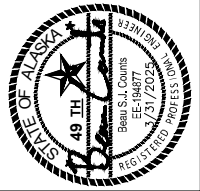
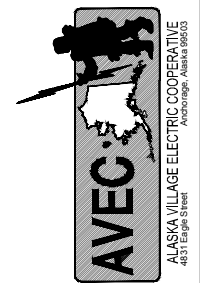
SHEET NOTES:

1. LOCATION OF BACKBOARD MOUNTED CITY ELECTRICAL SERVICE AND PANEL 'A'. CP-1 MOUNTED TO OPPOSITE SIDE.
2. LOCATION OF BACKBOARD MOUNTED CORP ELECTRICAL SERVICE AND PANEL 'B'. CP-2 MOUNTED TO OPPOSITE SIDE.
3. LOCATION OF BACKBOARD MOUNTED BIG WHEEL ELECTRICAL SERVICE AND PANEL 'C'. CP-3 MOUNTED TO OPPOSITE SIDE.

4. 1/2"C, 3#12 (2SIGNAL, G).
5. 3/4"C, 5#12 (4SIGNAL, G).



1 COLOCATED TANK FARM INSTRUMENTATION PLAN



SHAGELUK BULK FUEL UPGRADES
COLOCATED TANK FARM
INSTRUMENTATION PLAN
SHAGELUK, ALASKA

NO.	REVISION	BY	DATE
A	ISSUED FOR BIDDING	BC	3/31/25
Δ	ADDED FLOW SWITCHES	TK	1/29/26

Plot: 1/29/26	Designed: BC	Drawn: ESC, JB	Approved: BC
---------------	--------------	----------------	--------------

Sheet No. E2.4