



CONSTRUCTION DOCUMENTS

PROJECT TITLE: AIDEA/AEA NOISE CONTROL TENANT IMPROVEMENT
ADDRESS: 813 W Northern Lights Blvd, Anchorage, AK 99503
OWNER: ALASKA INDUSTRIAL DEVELOPMENT AND EXPORT AUTHORITY
SHEET TITLE: DEMOLITION REFLECTED CEILING PLANS - PHASE 1

NO	DESCRIPTION	DATE

DATE	2018.08.31
PROJECT NO	161002.103
DRAWN BY	GAR
CHECKED BY	MEK
COPYRIGHT	2018 RIM ARCHITECTS

DWG NO:
AD102

DEMO PLAN GENERAL NOTES

- COORDINATE THE DEMOLITION WITH MECHANICAL, ELECTRICAL AND STRUCTURAL SYSTEMS. MAINTAIN OCCUPIED AREAS AND COORDINATE CONTINUATION OF NEW CONSTRUCTION.
- COORDINATE DEMOLITION WITH HAZARDOUS MATERIALS ABATEMENTS, REPORT UNKNOWN HAZARDOUS MATERIALS FOUND DURING DEMOLITION TO THE OWNER.
- CONTRACTOR TO MAINTAIN INTEGRITY OF WOOD FINISHES, WHERE POSSIBLE, SALVAGE AND RE-USE.
- CONTRACTOR TO VERIFY FIELD CONDITIONS AND DIMENSIONS

DEMOLITION KEY NOTES

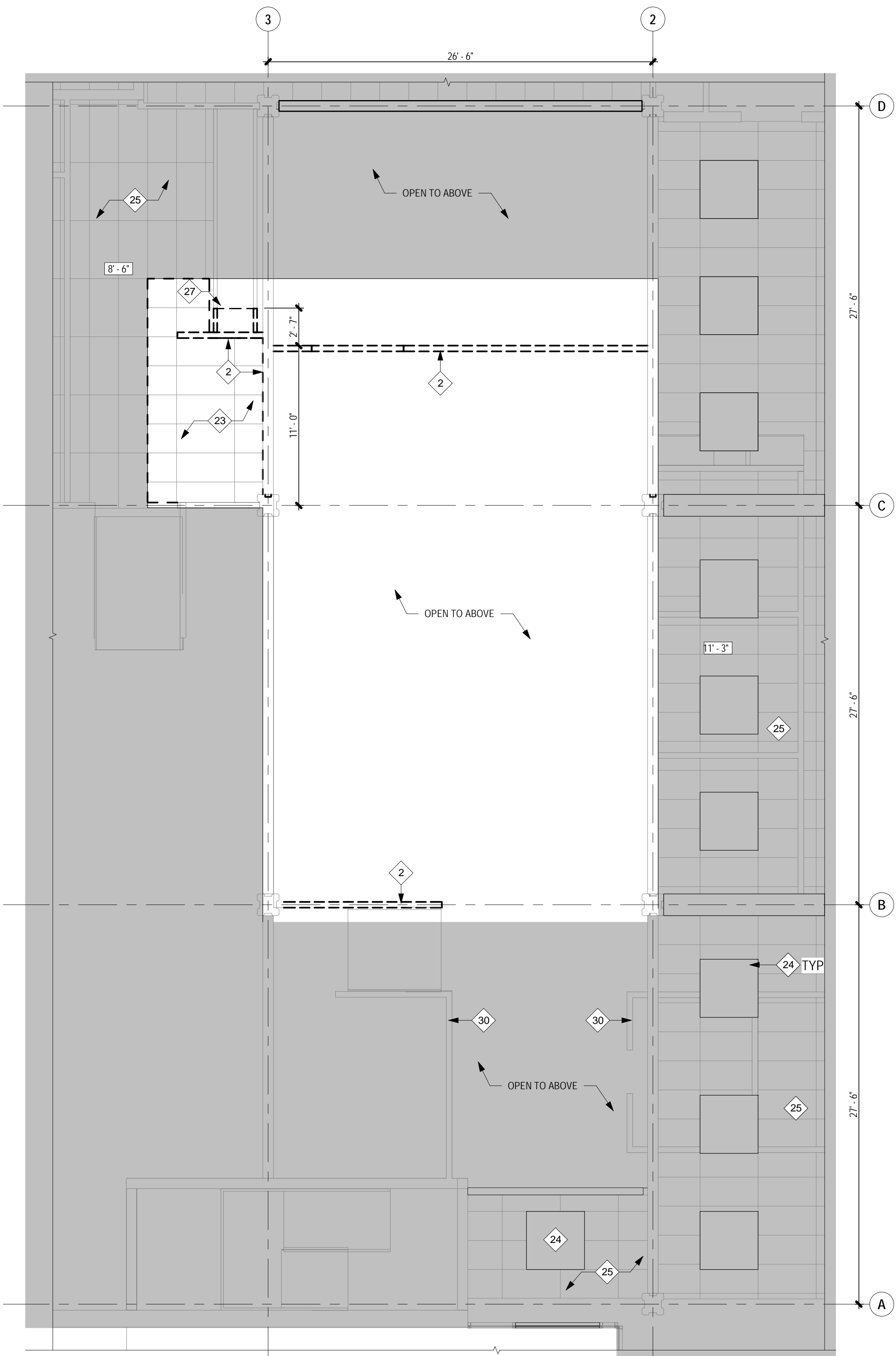
- REMOVE STAIRS AND ASSOCIATED HANDRAILS
- REMOVE WALL
- REMOVE WD CAP AND GYPSUM FINISH OVER CONCRETE BEAM
- BASE BID: MAINTAIN CASEWORK AND MAIL SLOTS. ALTERNATE 1: REMOVE CASEWORK AND MAIL SLOTS. MAINTAIN FOR RE-INSTALLATION
- PROTECT STOREFRONT GLAZING
- REMOVE DOOR, FRAME, AND HARDWARE
- PARTIAL HEIGHT WALL WITH WD CAP. MAINTAIN IN PLACE, EXISTING EDGE OF SLAB BEHIND
- REMOVE WD FRAME WALL, WD FINISHES AND ASSOCIATED WD CAP AND HANDRAIL
- MAINTAIN EXISTING STAIR, HANDRAIL AND WD FINISHES IN PLACE
- PHASE 2 REMOVE JUST ENOUGH FINISH FROM GUARDRAIL AND WOOD DETAILING TO INSTALL NEW STRUCT. FLOOR FRAMING. GUARDRAIL TO REMAIN.
- REMOVE CARPET AND BASE IN AREA OF WORK
- REMOVE MECH LOUVER. REFER TO MECH FOR ADDITIONAL INFORMATION
- PROTECT GLAZING AND WOOD FINISH BETWEEN EXISTING AND NEW CONSTRUCTION
- EXISTING STAIR
- RAMP, EXISTING CHANGE IN ELEVATION IS +/- 6"
- EXISTING OFFICE
- REMOVE INTERIOR GLAZING AND STOREFRONT
- OPEN TO FIRST FLOOR
- REMOVE PORTION OF DECK FOR RAMP AND STAIR INSTALLATION
- EDGE OF EXISTING SLAB/ CONCRETE BEAM OF 1ST FLOOR 0'-0" OR 1ST FLOOR MEZZ. 4'-6"
- MAINTAIN GUARDRAIL, PROTECT WD FINISH IN PLACE
- EXISTING BEAMS, PROTECT IN PLACE
- REMOVE CEILING SYSTEM, ASSOCIATED ACCESSORIES AND LIGHT FIXTURES. REFER TO MECH AND ELECT FOR ADDITIONAL INFORMATION. PREPARE SPACE FOR NEW CEILING AND FIXTURE INSTALL. WHERE ONLY A PORTION OF CEILING IS BEING REMOVED, REMOVE BACK TO NEAREST CEILING GRID. PREPARE TO PATCH AND REPAIR
- EXISTING LIGHT FIXTURE, NOT IN SCOPE
- EXISTING SUSPENDED CEILING NOT IN SCOPE
- REMOVE PORTION OF WOOD CEILING ELEMENT
- EXISTING COLUMN WITH WD DETAILING, PROTECT IN PLACE
- EXISTING WD TRIM OVER BEAM, PROTECT IN PLACE
- EXISTING PARTIAL HEIGHT PARTITION BELOW
- REMOVE PORTION OF CEILING PANELS, GRID, LIGHT FIXTURES ABOVE FOR INSTALLATION OF NEW CHASE

DEMO RCP GENERAL NOTES

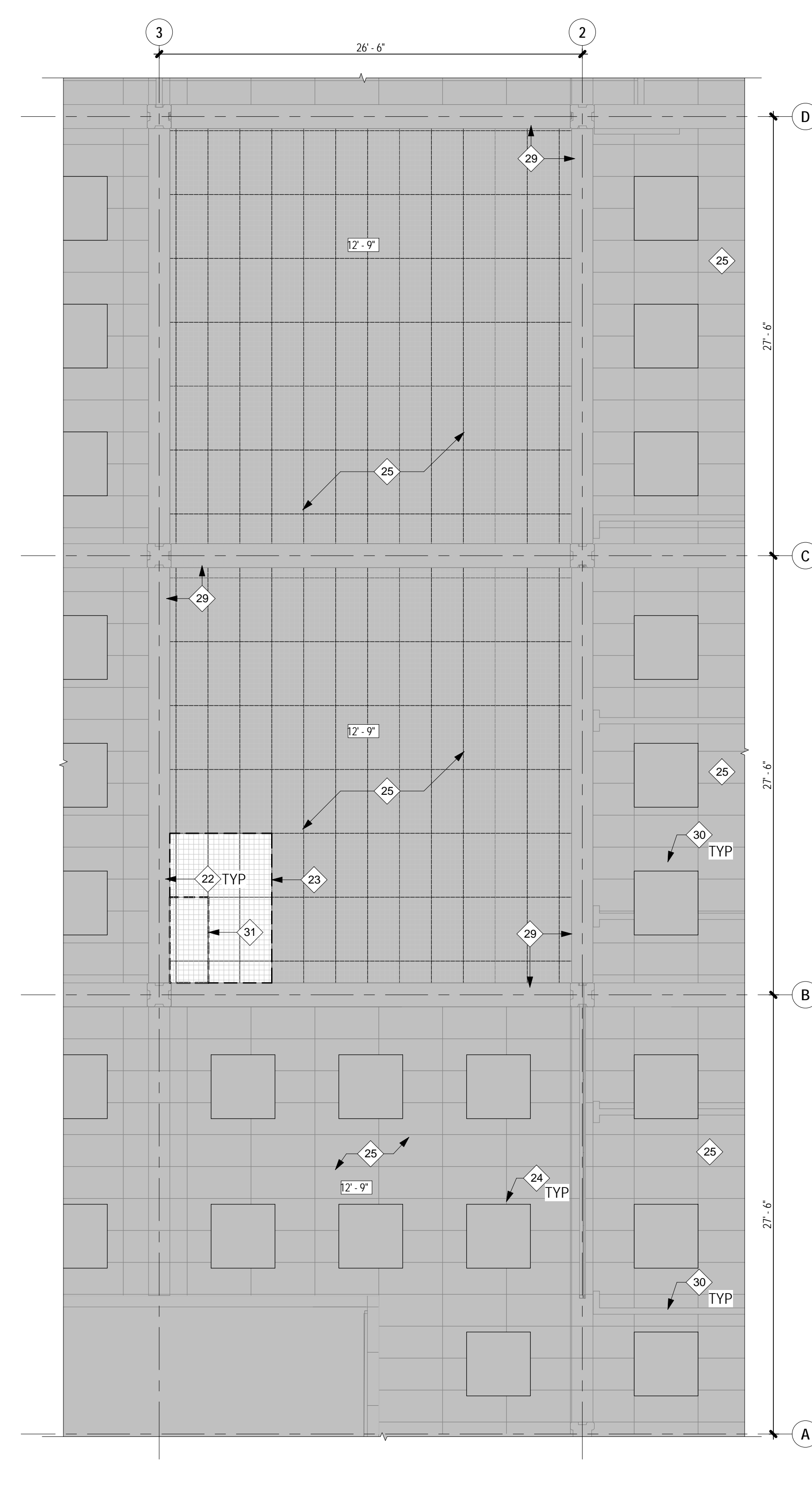
- CEILING HEIGHTS INDICATED ARE ASSOCIATED WITH THE FOLLOWING FLOOR ELEVATIONS.
FIRST FLOOR: LOWER 1ST FLR (-1'-9")
SECOND FLOOR: (9'-0")

DEMO RCP LEGEND

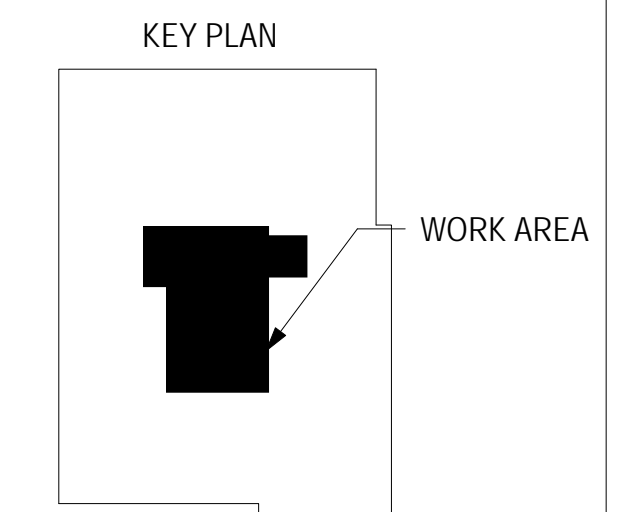
	NOT IN SCOPE		CEILING HEIGHT AS NOTED
	DEMO 2' X 4' ACP AND GRID		DEMO 4' X 4' ACP AND GRID



2 DEMOLITION REFLECTED CEILING PLAN - FIRST FLOOR - PHASE 1
AD102 3/16" = 1'-0"



1 DEMOLITION REFLECTED CEILING PLAN - SECOND FLOOR - PHASE 1
AD102 3/16" = 1'-0"



DEMO ELEVATION GENERAL NOTES

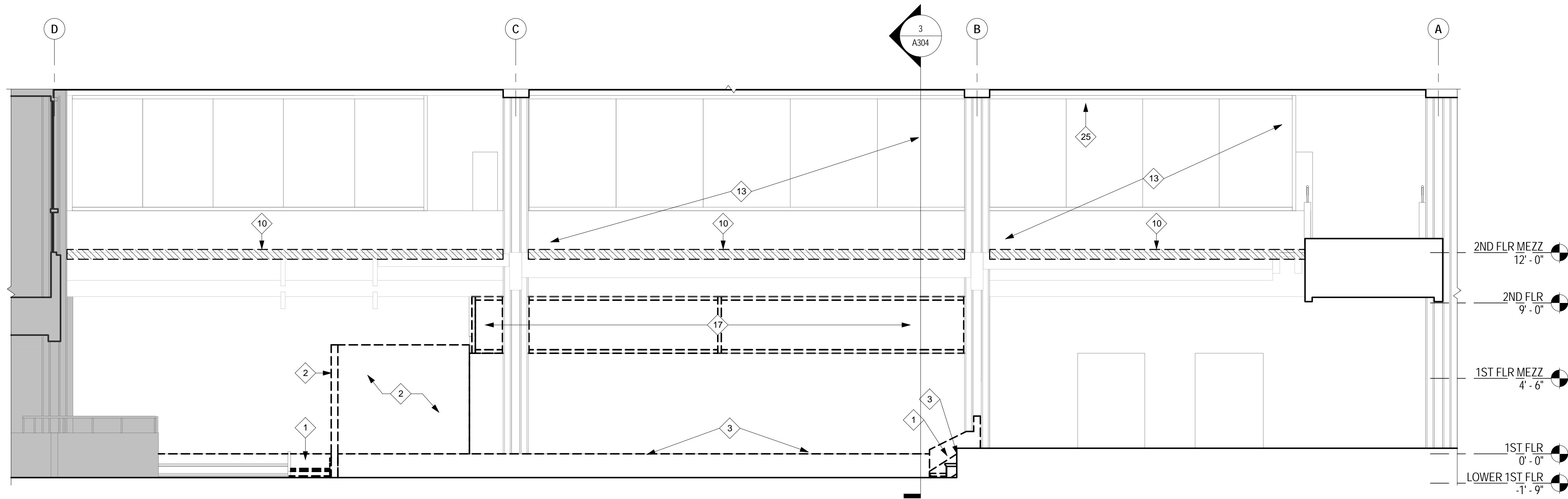
- COORDINATE THE DEMOLITION WITH MECHANICAL, ELECTRICAL AND STRUCTURAL SYSTEMS. MAINTAIN OCCUPIED AREAS AND COORDINATE CONTINUATION OF NEW CONSTRUCTION AS NECESSARY.
- COORDINATE DEMOLITION WITH ANY HAZARDOUS MATERIALS ABATEMENTS. REPORT ANY UNKNOWN HAZARDOUS MATERIALS FOUND DURING DEMOLITION TO THE DEPARTMENT.
- CONTRACTOR TO MAINTAIN INTEGRITY OF WOOD FINISHES, WHERE POSSIBLE, SALVAGE AND RE-USE.

DEMOLITION KEY NOTES

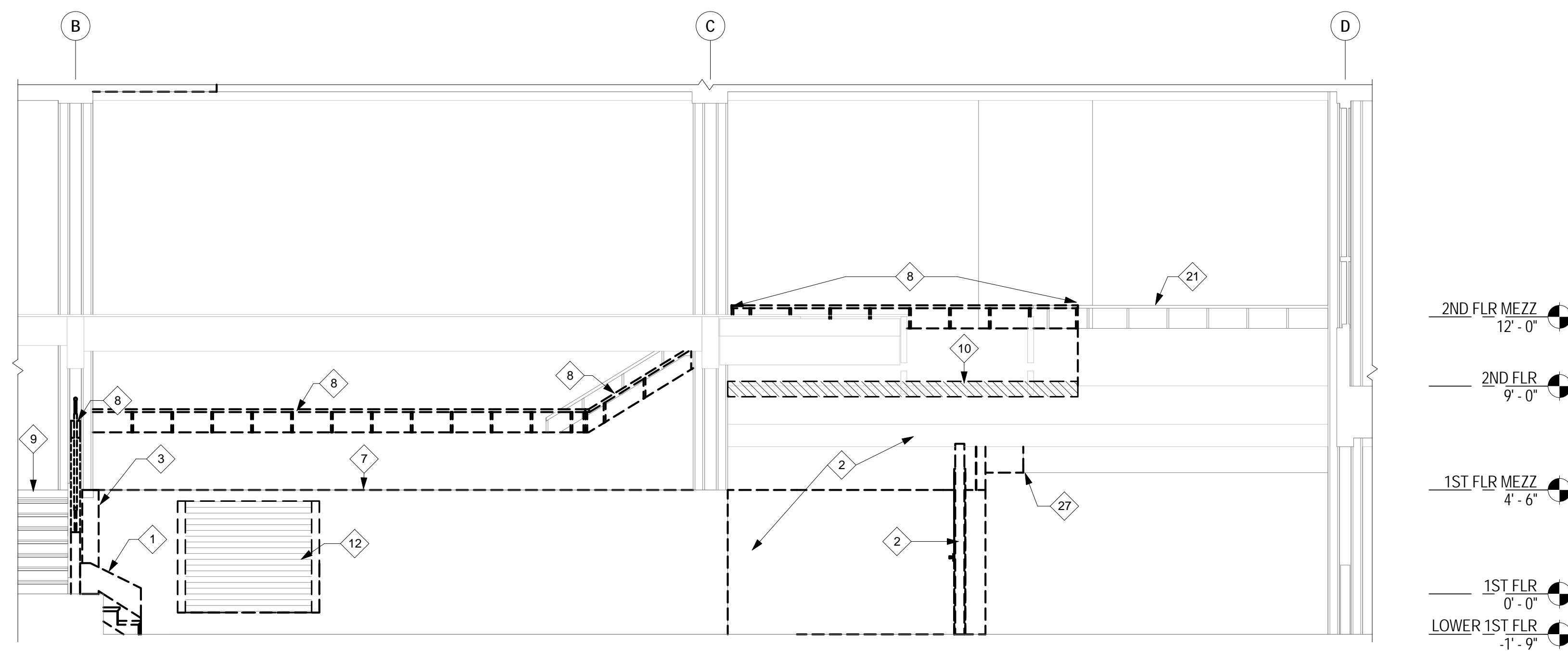
- REMOVE STAIRS AND ASSOCIATED HANDRAILS
- REMOVE WALL
- REMOVE WD CAP AND GYPSUM FINISH OVER CONCRETE BEAM
- BASE BID: MAINTAIN CASEWORK AND MAIL SLOTS. ALTERNATE 1: REMOVE CASEWORK AND MAIL SLOTS, MAINTAIN FOR RE-INSTALLATION
- PROTECT STOREFRONT GLAZING
- REMOVE DOOR, FRAME, AND HARDWARE
- PARTIAL HEIGHT WALL WITH WD CAP, MAINTAIN IN PLACE, EXISTING EDGE OF SLAB BEHIND
- REMOVE WD FRAME WALL, WD FINISHES AND ASSOCIATED WD CAP AND HANDRAIL
- MAINTAIN EXISTING STAIR, HANDRAIL AND WD FINISHES IN PLACE
- PHASE 2 REMOVE JUST ENOUGH FINISH FROM GUARDRAIL AND WOOD DETAILING TO INSTALL NEW STRUCT. FLOOR FRAMING, GUARDRAIL TO REMAIN.
- REMOVE CARPET AND BASE IN AREA OF WORK
- REMOVE MECH LOUVER, REFER TO MECH FOR ADDITIONAL INFORMATION
- PROTECT GLAZING AND WOOD FINISH BETWEEN EXISTING AND NEW CONSTRUCTION
- EXISTING STAIR
- RAMP, EXISTING CHANGE IN ELEVATION IS +/- 6"
- EXISTING OFFICE
- REMOVE INTERIOR GLAZING AND STOREFRONT
- OPEN TO FIRST FLOOR
- REMOVE PORTION OF DECK FOR RAMP AND STAIR INSTALLATION
- EDGE OF EXISTING SLAB/ CONCRETE BEAM OF 1ST FLOOR 0'-0" OR 1ST FLOOR MEZZ. 4'-6"
- MAINTAIN GUARDRAIL, PROTECT WD FINISH IN PLACE
- EXISTING BEAMS, PROTECT IN PLACE
- REMOVE CEILING SYSTEM, ASSOCIATED ACCESSORIES AND LIGHT FIXTURES. REFER TO MECH AND ELEC FOR ADDITIONAL INFORMATION. PREPARE SPACE FOR NEW CEILING AND FIXTURE INSTALL. WHERE ONLY A PORTION OF CEILING IS BEING REMOVED, REMOVE BACK TO NEAREST CEILING GRID. PREPARE TO PATCH AND REPAIR
- EXISTING LIGHT FIXTURE, NOT IN SCOPE
- EXISTING SUSPENDED CEILING NOT IN SCOPE
- REMOVE PORTION OF WOOD CEILING ELEMENT
- EXISTING COLUMN WITH WD DETAILING, PROTECT IN PLACE
- EXISTING WD TRIM OVER BEAM, PROTECT IN PLACE
- EXISTING PARTIAL HEIGHT PARTITION BELOW
- REMOVE PORTION OF CEILING PANELS, GRID, LIGHT FIXTURES ABOVE FOR INSTALLATION OF NEW CHASE

DEMO LEGEND

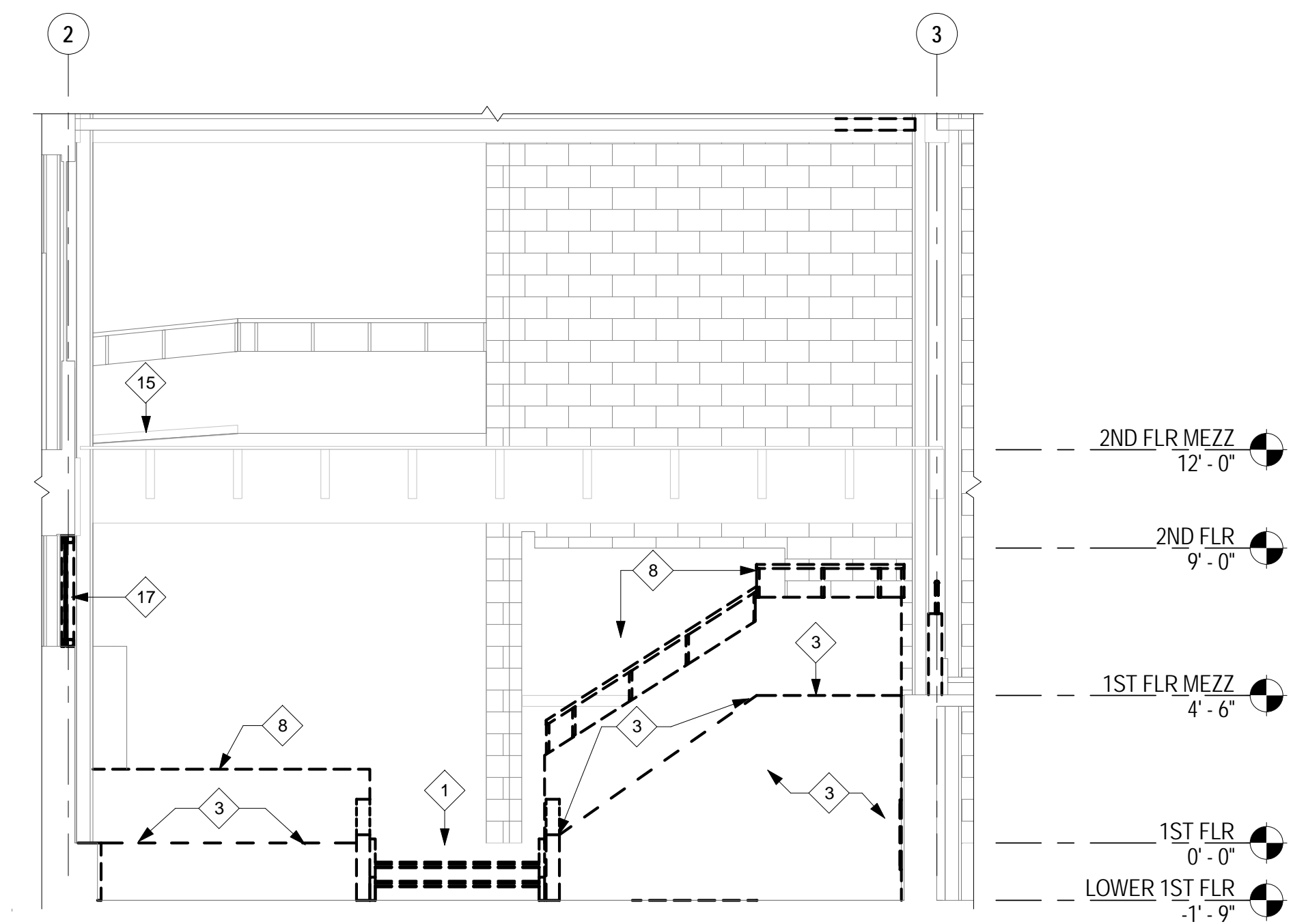
- NOT IN SCOPE
- DEMO



1 DEMO EAST ELEVATION - PHASE 1
AD201 1/4" = 1'-0"



2 DEMO WEST ELEVATION - PHASE 1
AD201 1/4" = 1'-0"



3 DEMO SOUTH ELEVATION - PHASE 1
AD201 1/4" = 1'-0"



CONSTRUCTION DOCUMENTS

PROJECT TITLE: AIDEA/ AEA NOISE CONTROL TENANT IMPROVEMENT
ADDRESS: 813 W Northern Lights Blvd, Anchorage, AK 99503
OWNER: ALASKA INDUSTRIAL DEVELOPMENT AND EXPORT AUTHORITY
SHEET TITLE: DEMO ELEVATIONS - PHASE 1

NO	DESCRIPTION	DATE

NO DESCRIPTION DATE
DATE : 2018.08.31
PROJECT NO : 161002.103
DRAWN BY : GAR
CHECKED BY : MEK
COPYRIGHT : 2018 RIM ARCHITECTS

DWG NO: **AD201**



CONSTRUCTION DOCUMENTS

PROJECT TITLE: AIDEA/AEA NOISE CONTROL TENANT IMPROVEMENT
ADDRESS: 813 W Northern Lights Blvd, Anchorage, AK 99503

OWNER: ALASKA INDUSTRIAL DEVELOPMENT AND EXPORT AUTHORITY
SHEET TITLE: WALL SECTIONS

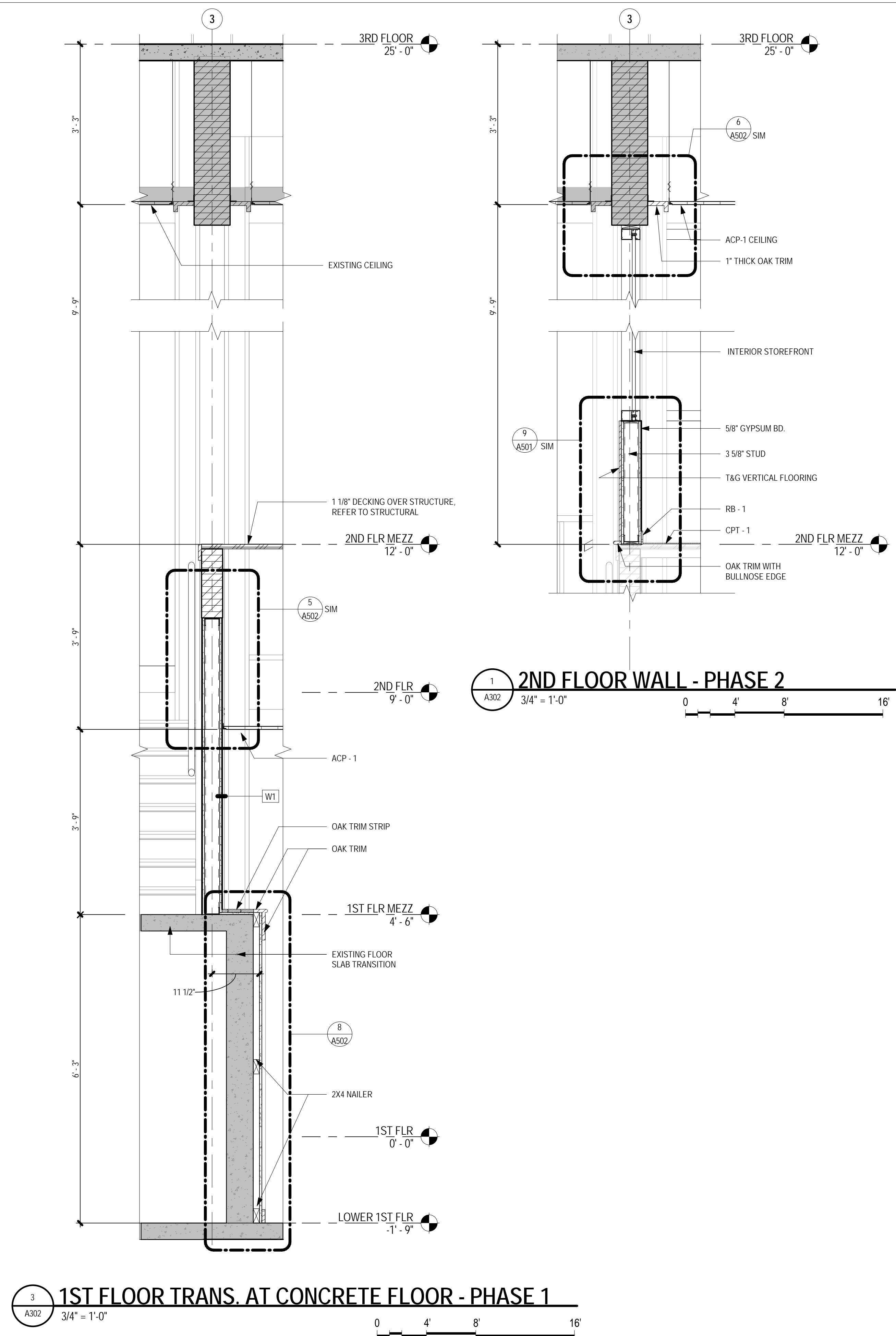
PROJECT TITLE: AIDEA/AEA NOISE CONTROL TENANT IMPROVEMENT
ADDRESS: 813 W Northern Lights Blvd, Anchorage, AK 99503

NO	DESCRIPTION	DATE

NO	DESCRIPTION	DATE
DATE	:	2018.08.31
PROJECT NO	:	161002.103
DRAWN BY	:	GAR / RSL
CHECKED BY	:	MEK
COPYRIGHT	:	2018 RIM ARCHITECTS

DWG NO:

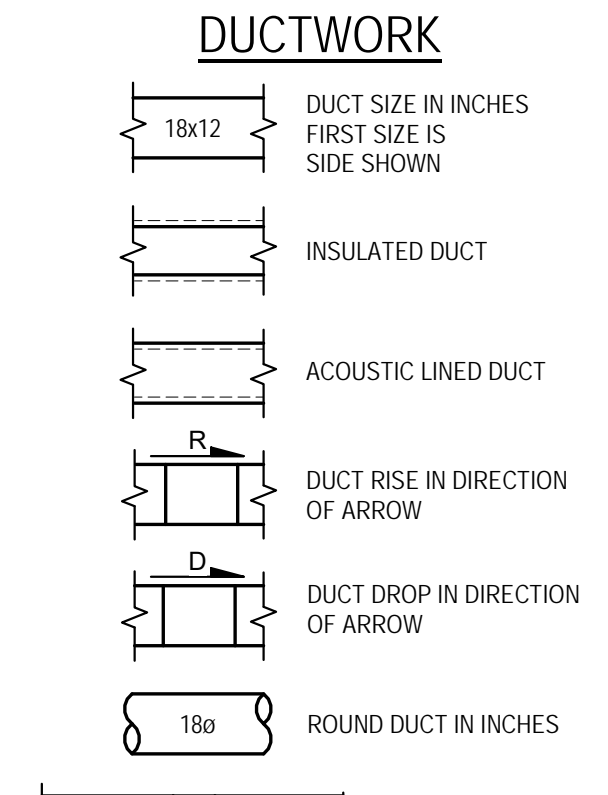
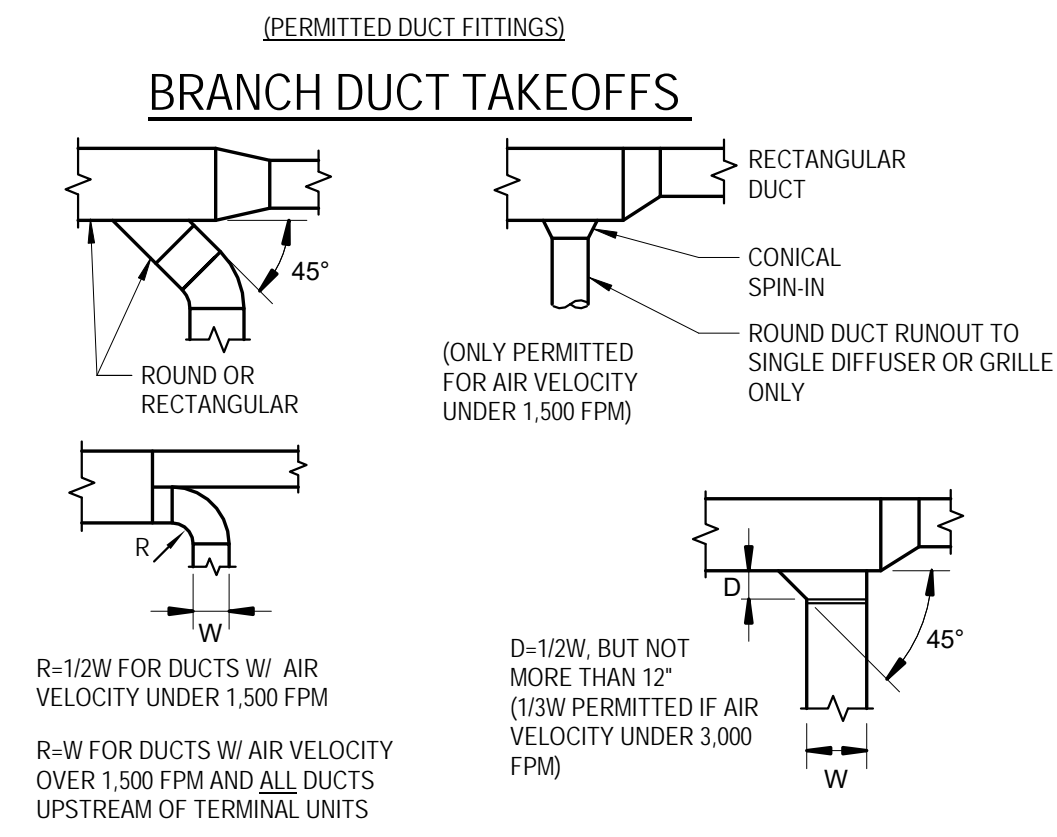
A302



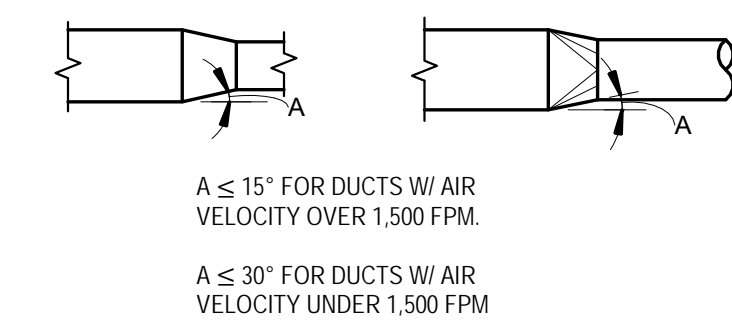
WALL SECTION LEGEND

NOT IN SCOPE

HVAC FITTINGS & SYMBOLS

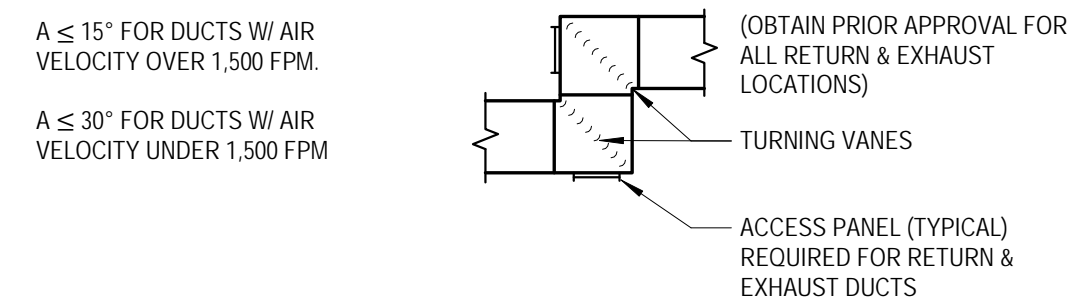
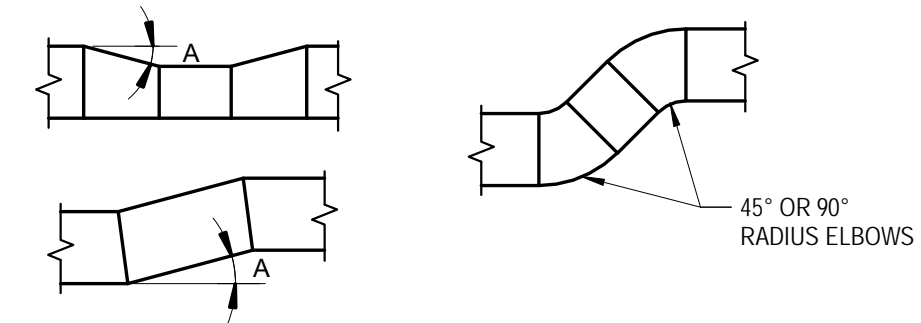


CHANGE OF DUCT SIZE/SHAPE

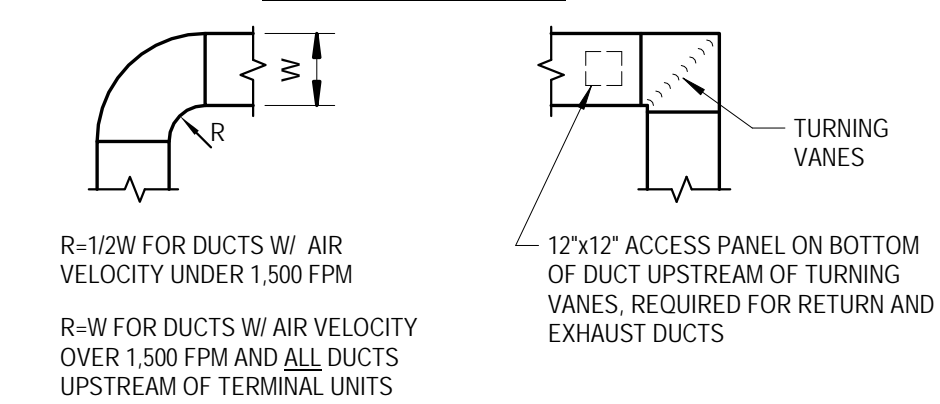


OFFSETS

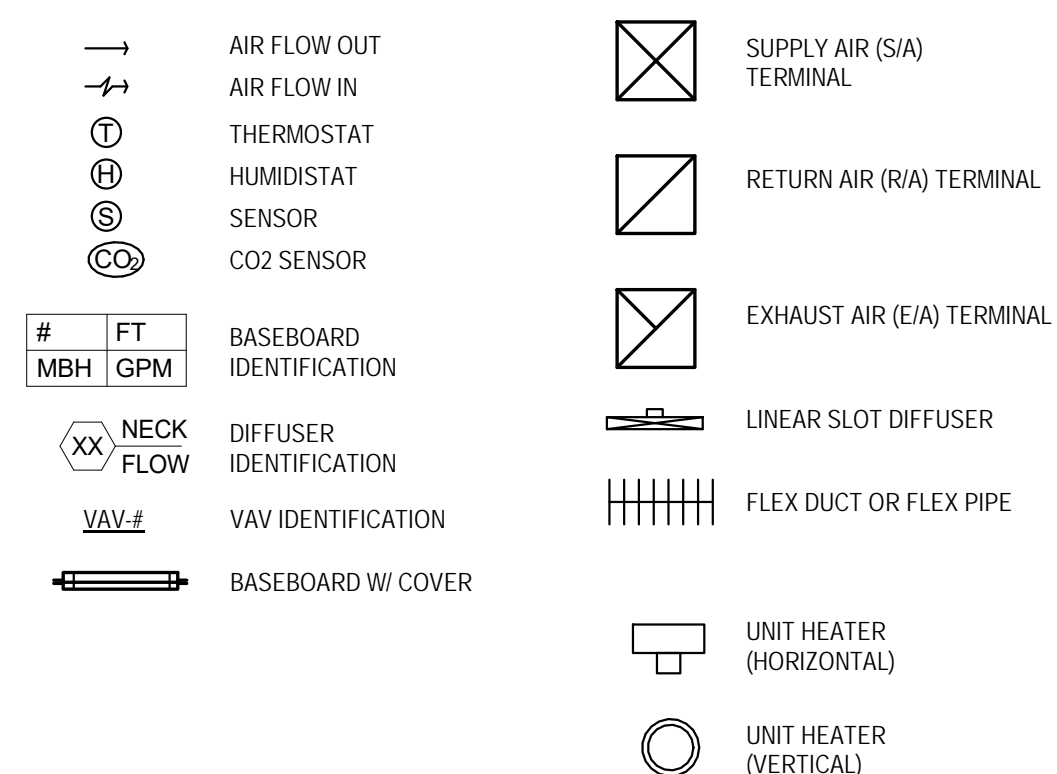
NOTE: OFFSETS (TO AVOID OBSTRUCTIONS) ARE REQUIRED BUT ARE NOT NECESSARILY SHOWN ON THE PLANS.



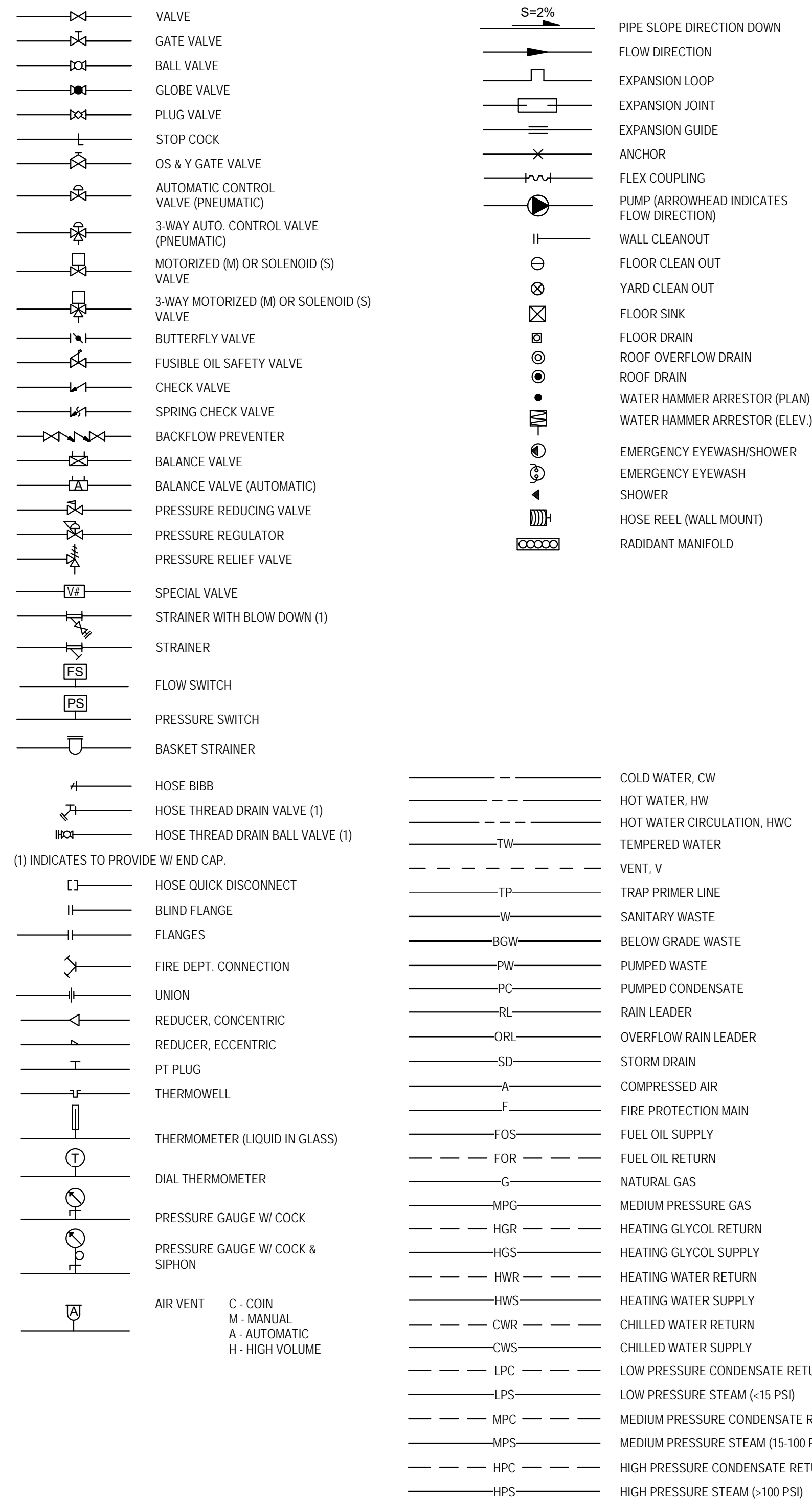
DUCT ELBOWS



OTHER HVAC SYMBOLS



PIPING SYMBOLS



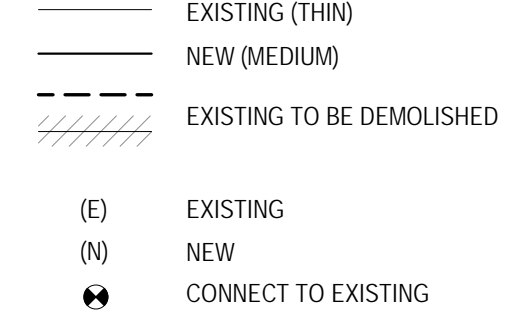
GENERAL

NOTES:

1. NOTE APPLIES TO ENTIRE SHEET.
- UNDERLINED DESIGNATOR HAS SCHEDULED VALUES. SEE MECHANICAL SCHEDULES.

PIPE & DUCT SIZES: INCH MARKS (") ARE NOT USED WHEN INDICATING PIPE AND DUCT SIZES ON PLANS, DETAILS, OR DIAGRAMS, EXCEPT FOR THE NUMERICAL 1.

LINETYPES



ABBREVIATIONS

A	COMPRESSED AIR	JP	JOCKEY PUMP
AAV	AUTOMATIC AIR VENT	JPC	JOCKEY PUMP CONTROLLER
ACM	ASBESTOS CONTAINING MATERIALS	KH	KICKSPACE HEATER
AF	AIR FLOW SWITCH	LAT	LEAVING AIR TEMPERATURE
AFF	ABOVE FINISH FLOOR	LF	LINEAL FOOT
AG	ABOVE GROUND	LPR	LOW PRESSURE CONDENSATE RETURN
AHU	AIR HANDLING UNIT	LPS	LOW PRESSURE STEAM
AL	ACOUSTIC LINED	LWT	LEAVING WATER TEMPERATURE
ARCH	ARCHITECT OR ARCHITECTURAL	MAV	MANUAL AIR VENT
ASME	AMERICAN SOCIETY OF MECHANICAL ENGINEERS	MAX	MAXIMUM
AV	ACID VENT	MBH	THOUSANDS BTU PER HOUR
AW	ACID WASTE	MFR	MANUFACTURER
AWT	AVERAGE WATER TEMPERATURE	MG	MEDICAL GAS
BA	BREATHING AIR	MIN	MINIMUM OR MINUTES
BB	BASEBOARD	MPG	MEDIUM PRESSURE GAS
BF	BYPASS FEEDER	MPR	MEDIUM PRESSURE CONDENSATE RETURN
BTU	BRITISH THERMAL UNIT	MPS	MEDIUM PRESSURE STEAM
BV	BALANCING VALVE	MS	MOTOR STARTER
BGW	BELOW GRADE WASTE	MUA	MAKE UP AIR
BG	BELOW GROUND	NC	NORMALLY CLOSED
CC	COOLING COIL	N.I.C.	NOT IN CONTRACT
CFM	CUBIC FEET PER MINUTE	NO	NORMALLY OPEN
CLG	CEILING	NPT	NATIONAL PIPE THREAD
CMU	CONCRETE MASONRY UNIT	NTS	NOT TO SCALE
CO	CLEANOUT	OA, O/A	OUTSIDE AIR
CU	COPPER	OW	OILY WASTE
CUH	CABINET UNIT HEATER	O2	MEDICAL OXYGEN
CW	COLD WATER	PCW	PROCESSED COLD WATER
CWC	COLD WATER CIRCULATION	PG	PROPYLENE GLYCOL
DB	DRY BULB	PH	PHASE
ø	DIAMETER OR PHASE	PLCS	PLACES
DEMO	DEMOLISH	PRV	PRESSURE REGULATING VALVE
DN	DOWN	PSI	POUNDS PER SQUARE INCH
DPS	DIFFERENTIAL PRESSURE SWITCH	PSIG	POUNDS PER SQUARE INCH GAUGE
DWG	DRAWING	PT	PRESSURE/TEMPERATURE
(E)	EXISTING	RA, R/A	RETURN AIR
EA, E/A	EXHAUST AIR	RCP	RADIANT CEILING PANEL
EAT	ENTERING AIR TEMPERATURE	REOD	REQUIRED
EF	EXHAUST FAN	RL	RAIN LEADER
EG	ETHYLENE GLYCOL	RO	REVERSE OSMOSIS
ESP	EXTERNAL STATIC PRESSURE	R.O.	ROUGH OPENING
EWT	ENTERING WATER TEMPERATURE	RPBP	REDUCED PRESSURE BACKFLOW PREVENTER
EXH	EXHAUST	RPM	REVOLUTION PER MINUTE
EXIST	EXISTING	SA, S/A	SUPPLY AIR
F	FIRE PROTECTION	SD	SMOKE DETECTOR
FCO	FLOOR CLEANOUT	SL	SOUNDLINING
F.D.	FIRE DAMPER	SP	STATIC PRESSURE
FD	FLOOR DRAIN	SSTL	STAINLESS STEEL
FDC	FIRE DEPARTMENT CONNECTION	SW	SOCKET WELDED
FF	FINISH FLOOR	T, TEMP	TEMPERATURE
FOR	FUEL OIL RETURN	TAB	TEST, ADJUST & BALANCE
FOS	FUEL OIL SUPPLY OR FUSIBLE OIL SAFETY	TB	TERMINAL BOX
FP	FIRE PUMP	THD	THREADED
FPC	FIRE PUMP CONTROLLER	TP	TRAP PRIMER
FPM	FEET PER MINUTE	TSP	TOTAL STATIC PRESSURE
FSD	FIRE SMOKE DAMPER	TYP	TYPICAL
FT	FLASH TANK OR FEET	UF	UNDER FLOOR
FTR	FINNED TUBE RADIATION	UG	UNDERGROUND
G	LOW PRESSURE GAS	UH	UNIT HEATER
GAL	GALLONS	US	UNDERSLAB
GALV	GALVANIZED	V	VENT OR VOLTS
GPH	GALLONS PER HOUR	VAC	VOLTAGE ALTERNATING CURRENT
GPM	GALLONS PER MINUTE	VAV	VARIABLE AIR VOLUME
HB	HOSE BIBB	VTR	VENT THRU ROOF
HC	HEATING COIL	W	WASTE
HL	HIGH LIMIT	WB	WET BULB
HP	HORSEPOWER	WI	WITH
HPR	HIGH PRESSURE CONDENSATE RETURN	WC	WATER CLOSET
HPS	HIGH PRESSURE STEAM	W.C.	WATER COLUMN
HR	HOUR	WCO	WALL CLEANOUT
HTG	HEATING	WH	WATER HEATER
HGR	HEATING GLYCOL RETURN	WHA	WATER HAMMER ARRESTOR
HGS	HEATING GLYCOL SUPPLY		
HWC	HOT WATER CIRCULATION		
HWR	HEATING WATER RETURN		
HWS	HEATING WATER SUPPLY		
HW	HOT WATER		
HX	HEAT EXCHANGER		



CONSTRUCTION DOCUMENTS

PROJECT TITLE: AIDEA / AEA NOISE CONTROL TENANT IMPROVEMENT
ADDRESS: 813 W. NORTHERN LIGHTS ANCHORAGE, AK 99503
OWNER: ALASKA INDUSTRIAL DEVELOPMENT AND EXPORT AUTHORITY
SHEET TITLE: MECHANICAL LEGEND

NO	DESCRIPTION	DATE
DATE :		2018.08.31
PROJECT NO :		CEI 171996
DRAWN BY :		SEW
CHECKED BY :		BLL
COPYRIGHT :		

