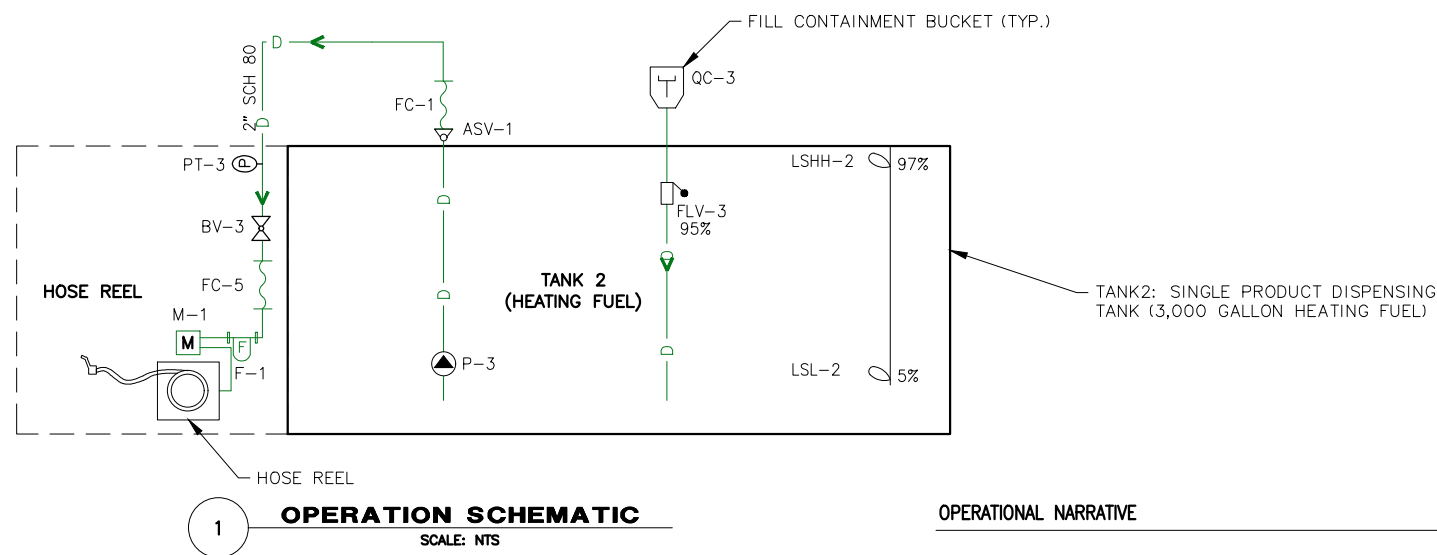


SYMBOL LEGEND

	PROPERTY BOUNDARY		ANTI-SIPHON VALVE
	CENTERLINE		BALL VALVE
	CULVERT		MOTOR ACTUATED BALL VALVE
	EDGE OF WATER		CHECK VALVE
	DITCH LINE/DRAINAGE SWALE		GATE VALVE
	DRAINAGE DIRECTION & SLOPE		PRESSURE RELIEF VALVE w/ FLOW DIRECTION
	TRAVELED WAY		SHEAR VALVE
	FILL SLOPE		PRESSURE TEST TAP
	CUT SLOPE		METER
	FENCE LINE		FILTER
	FIRE EXTINGUISHER		FLEXIBLE CONNECTOR
	GROUND ELEVATION CONTOURS		WYE STRAINER (MESH SIZE)
	BOLLARD		FILL LIMITER
	POWER POLE		QUICK COUPLING
	INFORMATION / WARNING SIGN		SUBMERSIBLE PUMP
	SHEET NOTE		VERTICAL PIPE TRANSITION
	SURVEY MONUMENT		REDUCER
	TEST PIT		LEVEL FLOAT SWITCH
	FINISH GRADE ELEVATION		HOSE REEL
	DIAMETER		



NOTES

1. SYSTEM REPRESENTATIONS ON THIS SHEET ARE SCHEMATIC. SEE TANK PROCUREMENT SPECIFICATIONS AND TANK DETAILS FOR MORE SPECIFIC INFORMATION ON COMPONENT LOCATIONS.
2. NOT ALL TANK APPURTENANCES (VENTS, ETC.) ARE SHOWN ON THIS SHEET. SEE TANK DETAIL SHEETS FOR INSTALLATION DETAILS.
3. THIS SHEET SHOWS THE DESIRED FUNCTIONALITY AND GENERAL LAYOUT OF REQUIRED AND ELECTRICAL COMPONENTS. CONTRACTOR SHALL PROVIDE CODE COMPLIANT TANK MOUNTED CONDUIT, SUPPORTS, ETC. AS REQUIRED FOR A FULLY FUNCTIONAL "PLUG AND PLAY" SYSTEM. CONTRACTOR IS NOT RESPONSIBLE FOR FINAL CONNECTIONS/TERMINATIONS OF SYSTEM POWER, FLOAT WIRING AND EXTERNAL "POINT OF SALE" SYSTEM CONNECTIONS OTHER THAN THOSE SPECIFIED.
4. OPERATIONAL NARRATIVES SHOWN ON THIS SHEET ARE PROVIDED TO ASSIST THE DISPENSING SYSTEM FABRICATOR WITH AN UNDERSTANDING OF DESIGNER INTENT.

OPERATIONAL NARRATIVE

FILLING TANK FARM FROM FUEL TRUCK:

- PRIOR TO FILLING, TURN OFF ENGINE, CHOCK WHEELS AND CONNECT STATIC GROUNDING CABLE.
- THE DISPENSING TANKS WILL BE FILLED VIA FILL POINTS LOCATED ON THE TOP OF THE TANKS.
- LINE PRESSURE WILL BE SUPPLIED BY THE FUEL TRUCK PUMPING SYSTEM.
- THE TANK FARM OPERATOR WILL MONITOR THE FILLING PROCESS VIA CLOCK GAUGES AND A GAUGING ROD AT EACH TANK.
- AT THE CONCLUSION OF FILLING, CLOSE ISOLATION VALVES AND DISCONNECT FILL HOSE.
- IF TANK LEVEL REACHES 95% FULL THE OVER FLOW PREVENTION VALVE (FLV) WILL ACTIVATE, STOPPING FLOW.
- IF TANK LEVEL REACHES 97% FULL THE HIGH LEVEL FLOAT WILL ACTIVATE AUDIBLE AND VISUAL ALARMS.

RETAIL SALES DISPENSER OPERATION:

- SELF SERVICE RETAIL SALES WILL BE AVAILABLE DURING SET BUSINESS HOURS.
- CUSTOMERS WILL INTERFACE WITH THE POINT OF SALE SYSTEM AT THE DUAL PRODUCT DISPENSER.
 - SELF SERVICE SALES WILL BE LIMITED TO CREDIT CARD PURCHASES ONLY.
 - CUSTOMERS WILL INSERT THEIR CREDIT CARDS AND FOLLOW PROMPTS ON THE DISPENSER SCREEN TO COMPLETE THE DISPENSING PROCESS.
 - IF THE TANK LEVEL FALLS BELOW 5% FULL THE LOW LEVEL WILL LOCKOUT THE SUBMERSIBLE PUMP.

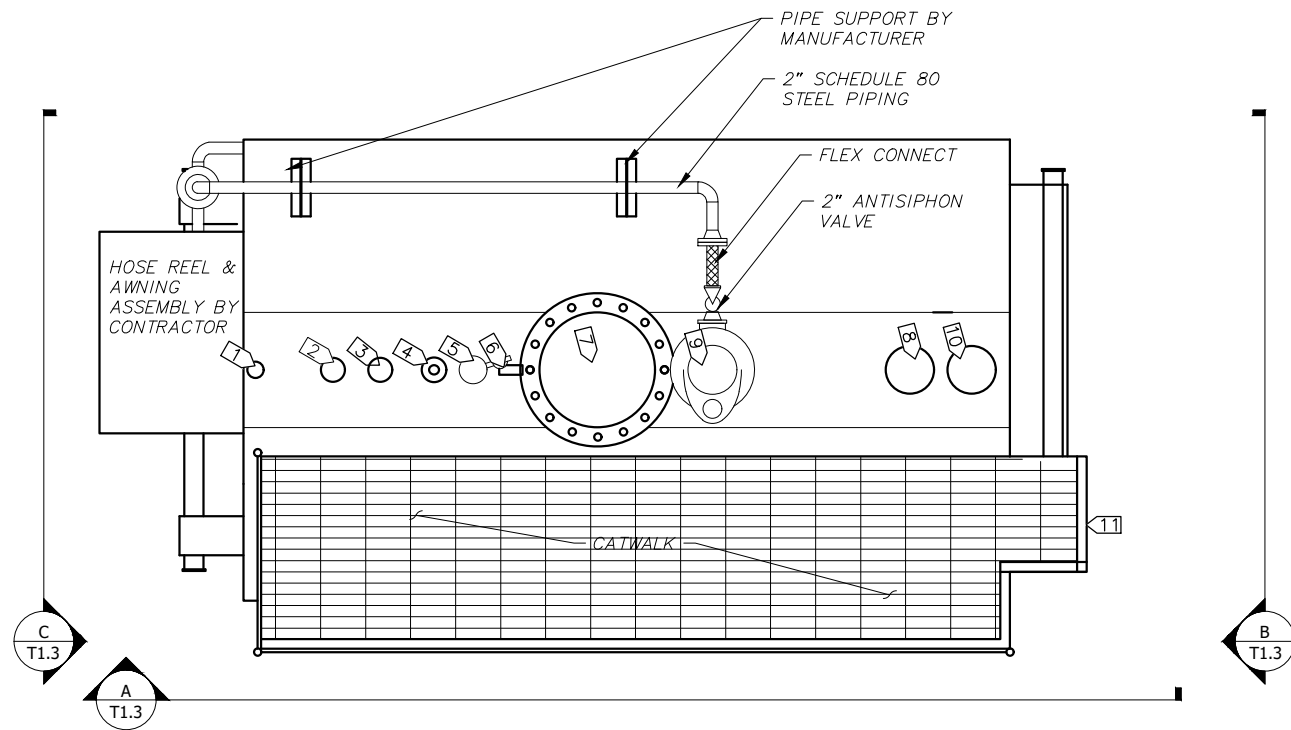
HEATING FUEL HOSE REEL DISPENSER OPERATION:

- THE HOSE REEL IS INTENDED TO FACILITATE BULK TRANSFER TO THE CITY-OWNED HEATING FUEL DELIVERY VEHICLE.
- PRIOR TO FILLING, TURN OFF ENGINE, CHOCK WHEELS AND CONNECT STATIC GROUNDING CABLE.
 - OPEN ISOLATION VALVE, INPUT DESIRED FUEL VOLUME INTO METER, SET SPRING-LOADED MECHANICAL VALVE AND DEPRESS PUMP START BUTTON TO PRESSURIZE HOSE.
 - UNWIND HOSE, PLACE NOZZLE IN APPROVED FUEL CONTAINER AND DEPRESS TRIGGER TO INITIATE FLOW.
 - PROVIDE CONTINUOUS MONITORING DURING FUELING PROCESS. FLOW WILL AUTOMATICALLY STOP AT PRE-SET VOLUME, BUT PUMP WILL CONTINUE TO RUN.
 - WHEN FUELING IS COMPLETE, DEPRESS PUMP STOP BUTTON, WIND HOSE ONTO REEL, HANG UP NOZZLE, AND NOTE VOLUME OF FUEL DISPENSED.

NO.	REVISION	BY	DATE

Plot Date	1/6/20
Designed	-
Drawn	-
Approved	-

File: J:\JobsData\30411.00 Kasoon BFU CM\00 CADD\01 Working Set\01 Civil\Procurement\Details-Tanks.dwg



PLAN - 3,000 GALLON DOUBLE WALLED TANK

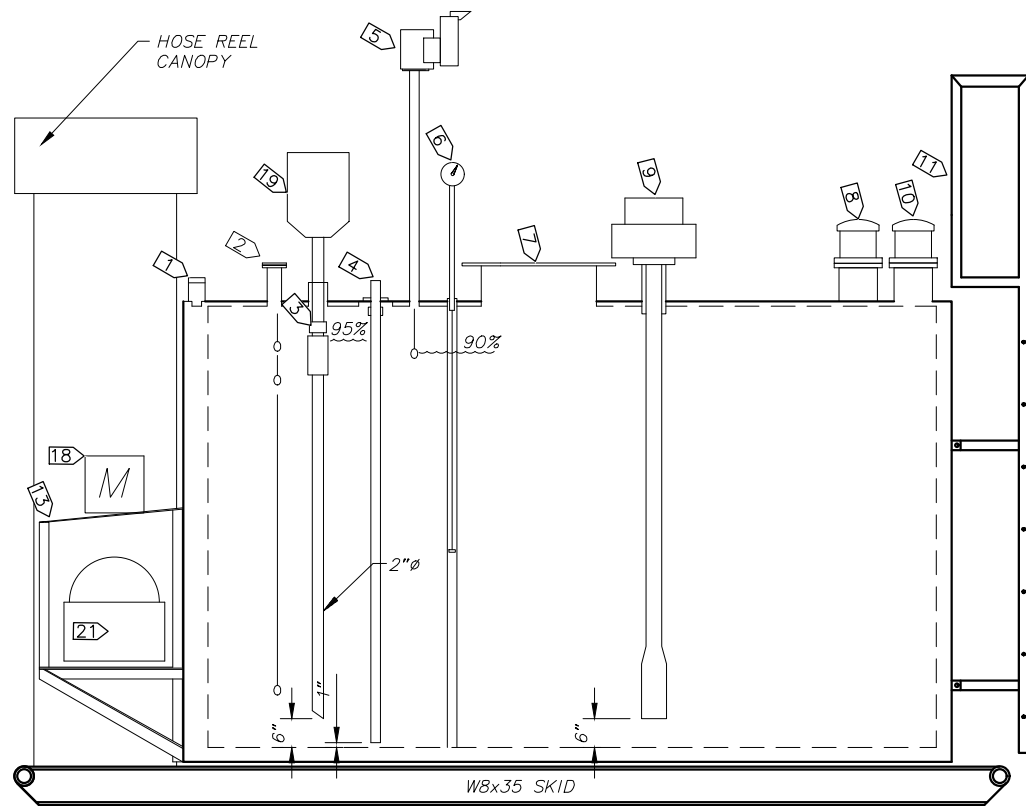
SCALE: NTS

GENERAL NOTES:

1. ALL COMPONENTS ON THIS SHEET ARE CONTRACTOR PROVIDED UNLESS SPECIFICALLY CALLED OUT AS OWNER PROVIDED.

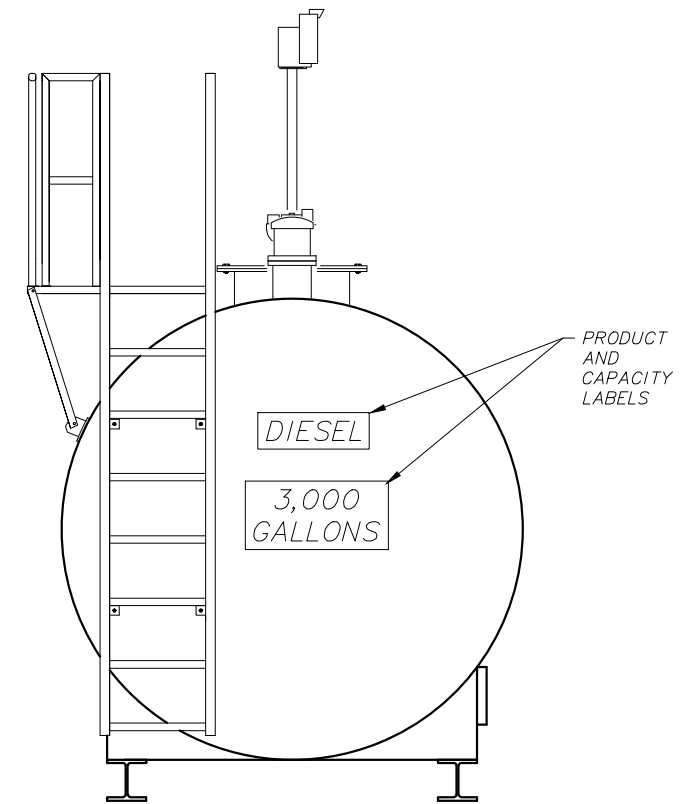
SPECIFIC NOTES:

- 1 GAUGE HATCH INSTALLED ON 2"x4" NIPPLE (SECONDARY TANK MONITOR)
- 2 3" FLANGED NOZZLE
- 3 4" FPT NOZZLE W/ FILL LIMITER
- 4 WATER DRAW
- 5 3" ϕ FPT NOZZLE W/ 2" PRESSURE VACUUM VENT W/ WHISTLE ALARM
- 6 2" FPT NOZZLE W/ CLOCK GAUGE AND STILLING WELL
- 7 24" MANHOLE
- 8 8" FLANGED E-VENT
- 9 SUBMERSIBLE PUMP
- 10 FLANGED SECONDARY E-VENT
- 11 SHOP FABRICATED BOLT ON LADDER AND CATWALK ASSEMBLY
- 12 2" BALL VALVE
- 13 HOSE REEL SUPPORT SYSTEM
- 14 2" STRAINER
- 15 2" CHECK VALVE
- 16 STATIC GROUNDING REEL (BOND TO GROUND SYSTEM)
- 17 NOZZLE RETENTION/HANG UP ASSEMBLY
- 18 HOSE REEL
- 19 TANK FILL SPILL BUCKET
- 20 METER



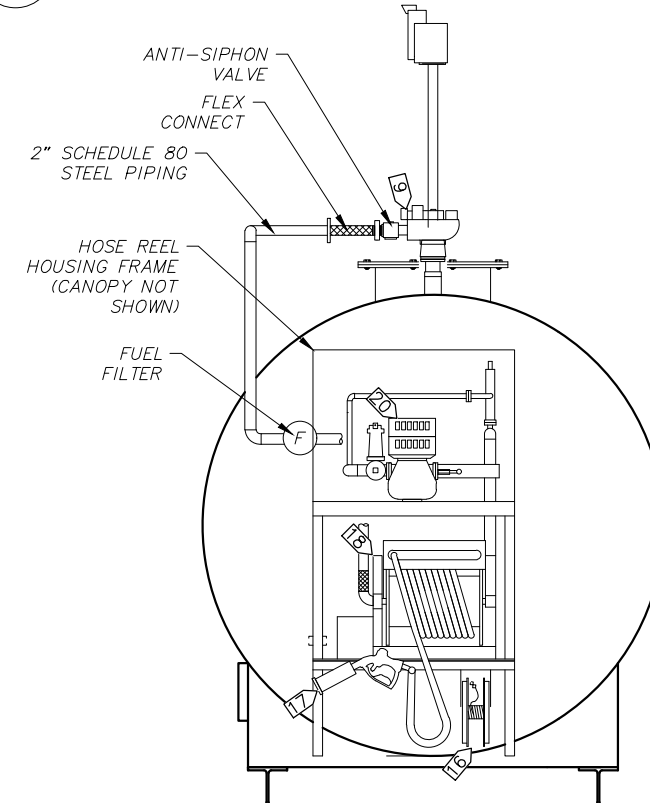
SECTION - 3,000 GALLON DOUBLE WALLED TANK

SCALE: NTS



SECTION - 3,000 GALLON DOUBLE WALLED TANK

SCALE: NTS



SECTION - 3,000 GALLON DOUBLE WALLED TANK

SCALE: NTS



KASAAK, ALASKA
TANK PROCUREMENTS DRAWINGS
3,000 GALLON DUAL PRODUCT DISPENSING TANK
DETAILS

NO.	REVISION	BY	DATE

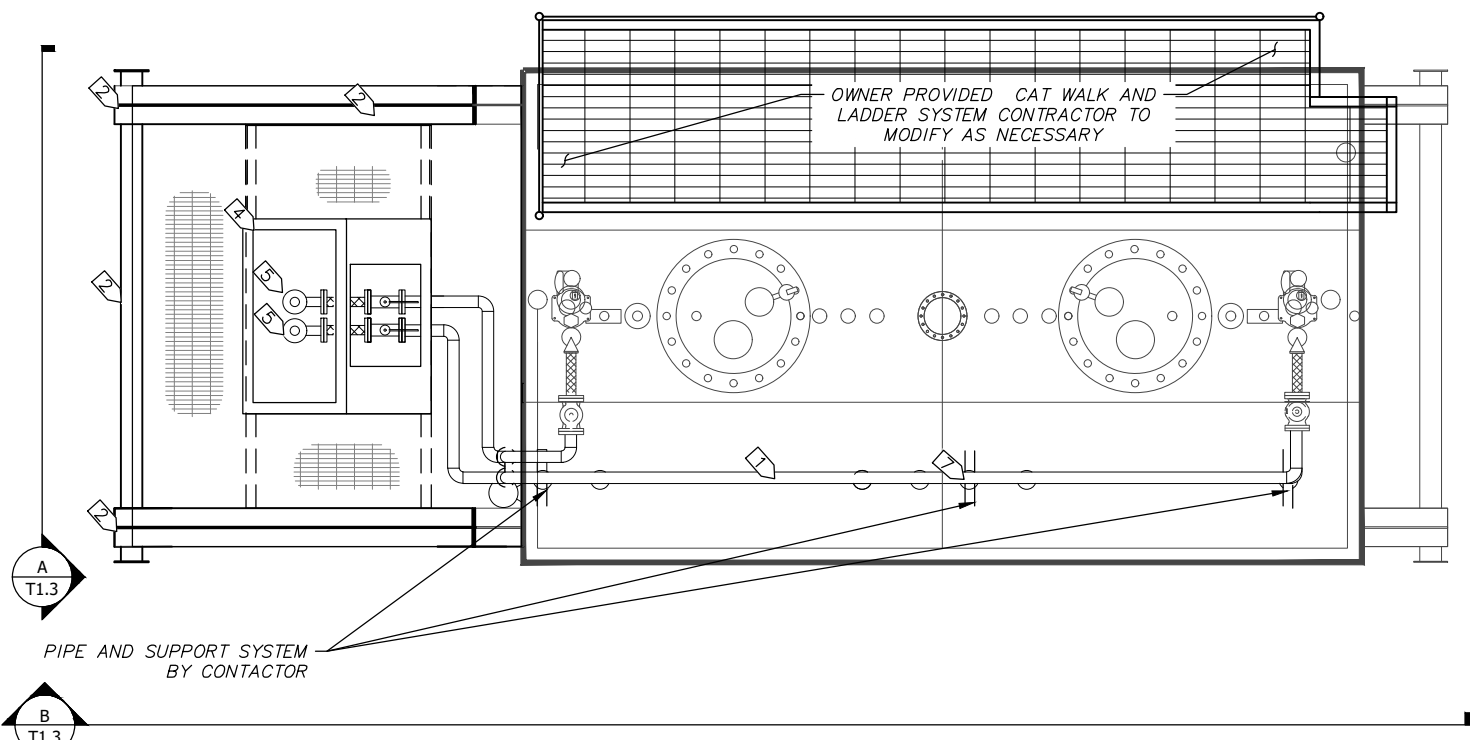
Plot Date	1/6/20
Designed	-
Drawn	-
Approved	-

SPECIFIC NOTES

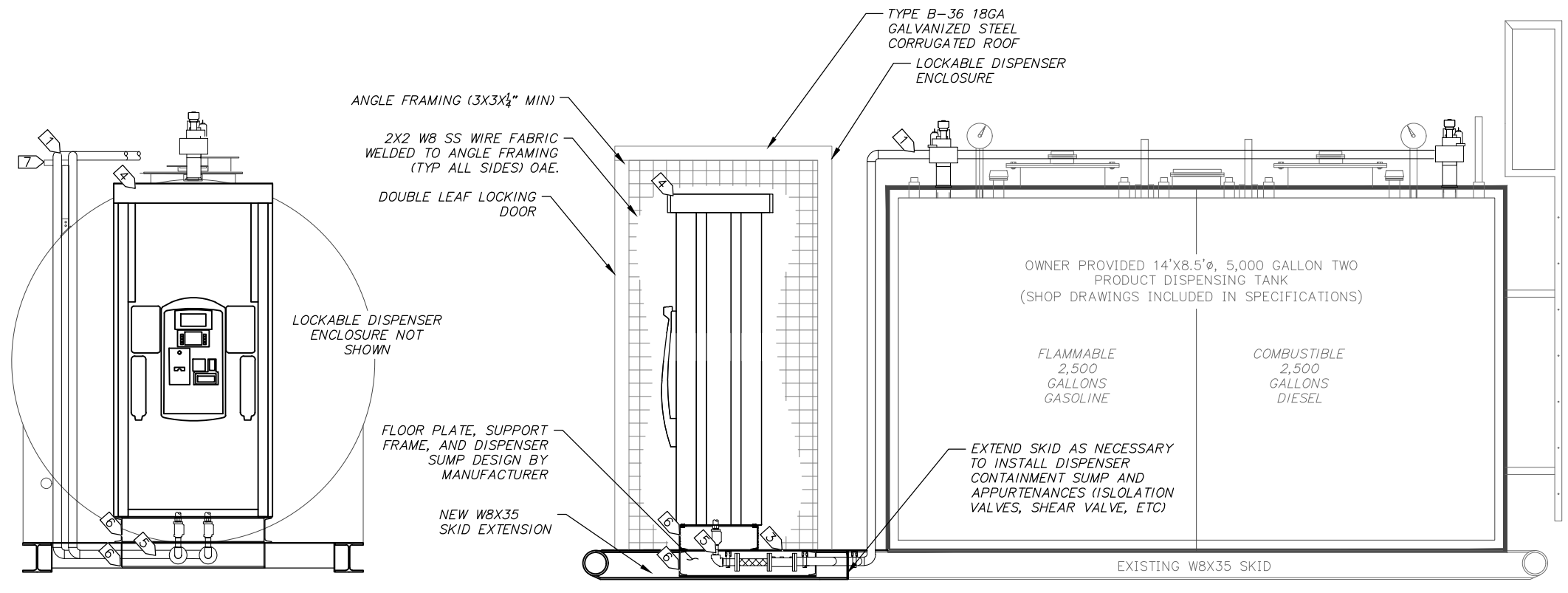
- 1 2" SCHEDULE 80 STEEL PIPING
- 2 SKID EXTENSIONS
- 3 DISPENSER FLOOR PLATE
- 4 DUAL PRODUCT DISPENSER
- 5 DISPENSER CONNECTIVE PIPING
- 6 CONTAINMENT SUMP
- 7 PIPE SUPPORT

GENERAL NOTES:

1. CONTRACTOR SHALL MODIFY OWNER PROVIDED TANK AS SHOWN. GENERAL MODIFICATIONS TO INCLUDE LENGTHENING OF TANK SKIDS, FABRICATION OF RETAIL DISPENSER MOUNTING SYSTEM (FLOOR PLATE, SUMP, ETC), INSTALLATION OF TWO PRODUCT DISPENSER, LOCKING DISPENSER ENCLOSURE, INSTALLATION OF ALL PIPING VALVES, SUPPORTS, MECHANICAL AND ELECTRICAL APPURTENANCES, ETC AS SHOWN ON THE DRAWINGS AND DESCRIBED IN THE SPECIFICATIONS.
2. CONTRACTOR IS NOT RESPONSIBLE FOR FINAL TERMINATION OF POWER/CONNECTS OUTSIDE OF THE TANK SYSTEM ENVELOPE. TERMINATE WIRING IN THE NEMA 4X ENCLOSURES AND MAKE READY FOR CONNECTION TO EXTERIOR POWER/CONTROLES BY OTHERS.



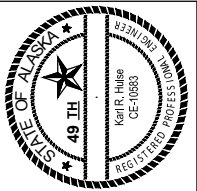
PLAN - 5,000 GALLON DOUBLE WALLED TANK
SCALE: NTS



END VIEW
SCALE: NTS

SECTION - 5,000 GALLON DOUBLE WALLED TANK
SCALE: NTS

File: J:\JobsData\30411.00 Kasoon BFU CM\00 CADD\01 Working Set\01 Civil\Procurement\Details-Tanks.dwg



KASAAN, ALASKA
TANK PROCUREMENT DRAWINGS
5,000 DISPENSING TANK AND INTEGRAL DISPENSER DETAILS

NO.	REVISION	BY	DATE

Plot Date	1/6/20
Designed	-
Drawn	-
Approved	-

Sheet No. **T1.3**