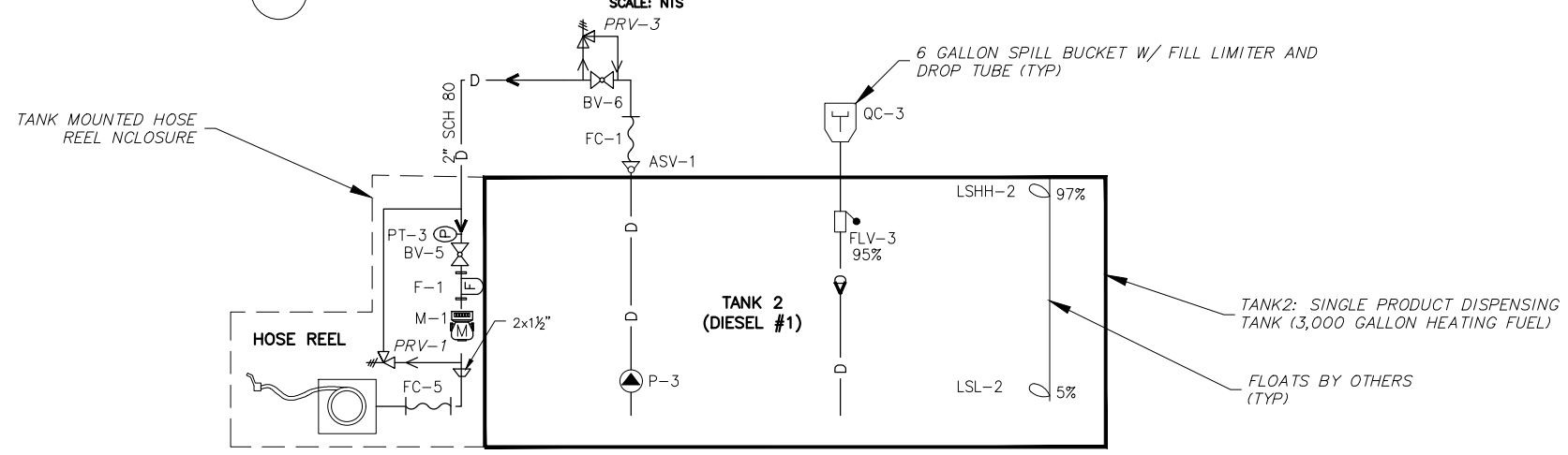


1 **5,000 GALLON TANK OPERATION SCHEMATIC** (2,500 GAL USLD, 2,500 GALLON GASOLINE)
SCALE: NTS



2 **3,000 GALLON TANK OPERATION SCHEMATIC** (DIESEL #1)
SCALE: NTS

SYMBOL LEGEND

	PROPERTY BOUNDARY		ANTI-SIPHON VALVE
	CENTERLINE		BALL VALVE
	CULVERT		MOTOR ACTUATED BALL VALVE
	EDGE OF WATER		CHECK VALVE
	DITCH LINE/DRAINAGE SWALE		GATE VALVE
	DRAINAGE DIRECTION & SLOPE		PRESSURE RELIEF VALVE w/ FLOW DIRECTION
	TRAVELED WAY		SHEAR VALVE
	FILL SLOPE		PRESSURE TEST TAP
	CUT SLOPE		METER
	FENCE LINE		FILTER
	FIRE EXTINGUISHER		FLEXIBLE CONNECTOR
	GROUND ELEVATION CONTOURS		WYE STRAINER (MESH SIZE)
	BOLLARD		FILL LIMITER
	POWER POLE		QUICK COUPLING
	INFORMATION / WARNING SIGN		SUBMERSIBLE PUMP
	SHEET NOTE		VERTICAL PIPE TRANSITION
	SURVEY MONUMENT		REDUCER
	TEST PIT		LEVEL FLOAT SWITCH
	FINISH GRADE ELEVATION		HOSE REEL
	DIAMETER		

NOTES

- SYSTEM REPRESENTATIONS ON THIS SHEET ARE SCHEMATIC. SEE TANK PROCUREMENT SPECIFICATIONS AND TANK DETAIL SHEETS FOR MORE SPECIFIC INFORMATION.
- NOT ALL TANK APPURTENANCES ARE SHOWN ON THIS SHEET. SEE TANK DETAIL SHEETS AND SHOP DRAINGS FOR ADDITIONAL INFORMATION.
- THIS SHEET SHOWS THE DESIRED FUNCTIONALITY AND GENERAL LAYOUT OF THE PROPOSED SYSTEMS. THE INTENT IS NOT TO SHOW EVERY REQUIRED COMPONENT BUT TO PROVIDE THE CONTRACTOR WITH SUFFICIENT INFORMATION TO FINALIZE THE DESIGN AND PREPARE SHOP DRAWINGS FOR FINAL REVIEW AND APPROVAL PRIOR TO FABRICATION. IT IS ASSUMED THAT THE CONTRACTOR HAS IN-HOUSE DESIGNS AND TECHNIQUES FOR FABRICATING INTEGRAL TANK / DISPENSING SYSTEMS AND IT IS THE CONTRACTOR'S RESPONSIBILITY TO SUPPLEMENT THE SCHEMATIC DRAWINGS AS NECESSARY TO PROVIDE A FULLY FUNCTIONAL, CODE COMPLIANT SYSTEM.
- CONTRACTOR IS NOT RESPONSIBLE FOR ELECTRICAL WIRING OF THE TANK/SKID MOUNTED COMPONENTS.
- CONTRACTOR SHALL INTEGRATE REQUIRED SUPPORTS, STAND OFFS, ETC AS NECESSARY TO FACILITATE THE FIELD INSTALLATION OF ELECTRICAL CONDUIT, CONDUCTOR, AND DEVICES REQUIRED TO POWER THE SYSTEMS. FIELD INSTALLATION OF CONDUIT AND CONDUCTOR BY OTHERS.

OPERATIONAL NARRATIVE

FILLING TANK FARM FROM FUEL TRUCK:

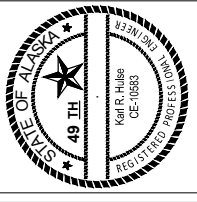
- PRIOR TO FILLING, TURN OFF ENGINE, CHOCK WHEELS AND CONNECT STATIC GROUNDING CABLE.
- THE DISPENSING TANKS WILL BE FILLED VIA FILL POINTS LOCATED ON THE TOP OF THE TANKS.
- LINE PRESSURE WILL BE SUPPLIED BY THE FUEL TRUCK PUMPING SYSTEM.
- THE TANK FARM OPERATOR WILL MONITOR THE FILLING PROCESS VIA CLOCK GAUGES AND A GAUGING ROD AT EACH TANK.
- AT THE CONCLUSION OF FILLING, CLOSE ISOLATION VALVES AND DISCONNECT FILL HOSE.
- IF TANK LEVEL REACHES 95% FULL THE OVER FLOW PREVENTION VALVE (FLV) WILL ACTIVATE, STOPPING FLOW.
- IF TANK LEVEL REACHES 97% FULL THE HIGH LEVEL FLOAT WILL ACTIVATE AUDIBLE AND VISUAL ALARMS.

RETAIL SALES DISPENSER OPERATION:

- SELF SERVICE RETAIL SALES WILL BE AVAILABLE DURING SET BUSINESS HOURS.
- CUSTOMERS WILL INTERFACE WITH THE POINT OF SALE SYSTEM AT THE DUAL PRODUCT DISPENSER.
 - SELF SERVICE SALES WILL BE LIMITED TO CREDIT CARD PURCHASES ONLY.
 - CUSTOMERS WILL INSERT THEIR CREDIT CARDS AND FOLLOW PROMPTS ON THE DISPENSER SCREEN TO COMPLETE THE DISPENSING PROCESS.
 - IF THE TANK LEVEL FALLS BELOW 5% FULL THE LOW LEVEL WILL LOCKOUT THE SUBMERSIBLE PUMP.

HEATING FUEL HOSE REEL DISPENSER OPERATION:

- THE HOSE REEL IS INTENDED TO FACILITATE BULK TRANSFER TO THE CITY-OWNED HEATING FUEL DELIVERY VEHICLE.
- PRIOR TO FILLING, TURN OFF ENGINE, CHOCK WHEELS AND CONNECT STATIC GROUNDING CABLE.
 - OPEN ISOLATION VALVE, INPUT DESIRED FUEL VOLUME INTO METER, SET SPRING-LOADED MECHANICAL VALVE AND DEPRESS PUMP START BUTTON TO PRESSURIZE HOSE.
 - UNWIND HOSE, PLACE NOZZLE IN APPROVED FUEL CONTAINER AND DEPRESS TRIGGER TO INITIATE FLOW.
 - PROVIDE CONTINUOUS MONITORING DURING FUELING PROCESS. FLOW WILL AUTOMATICALLY STOP AT PRE-SET VOLUME, BUT PUMP WILL CONTINUE TO RUN.
 - WHEN FUELING IS COMPLETE, DEPRESS PUMP STOP BUTTON, WIND HOSE ONTO REEL, HANG UP NOZZLE, AND NOTE VOLUME OF FUEL DISPENSED.



KASAAAN, ALASKA
TANK PROCUREMENT DRAWINGS
KASAAAN OPERATING SCHEMATIC

NO.	REVISION	BY	DATE

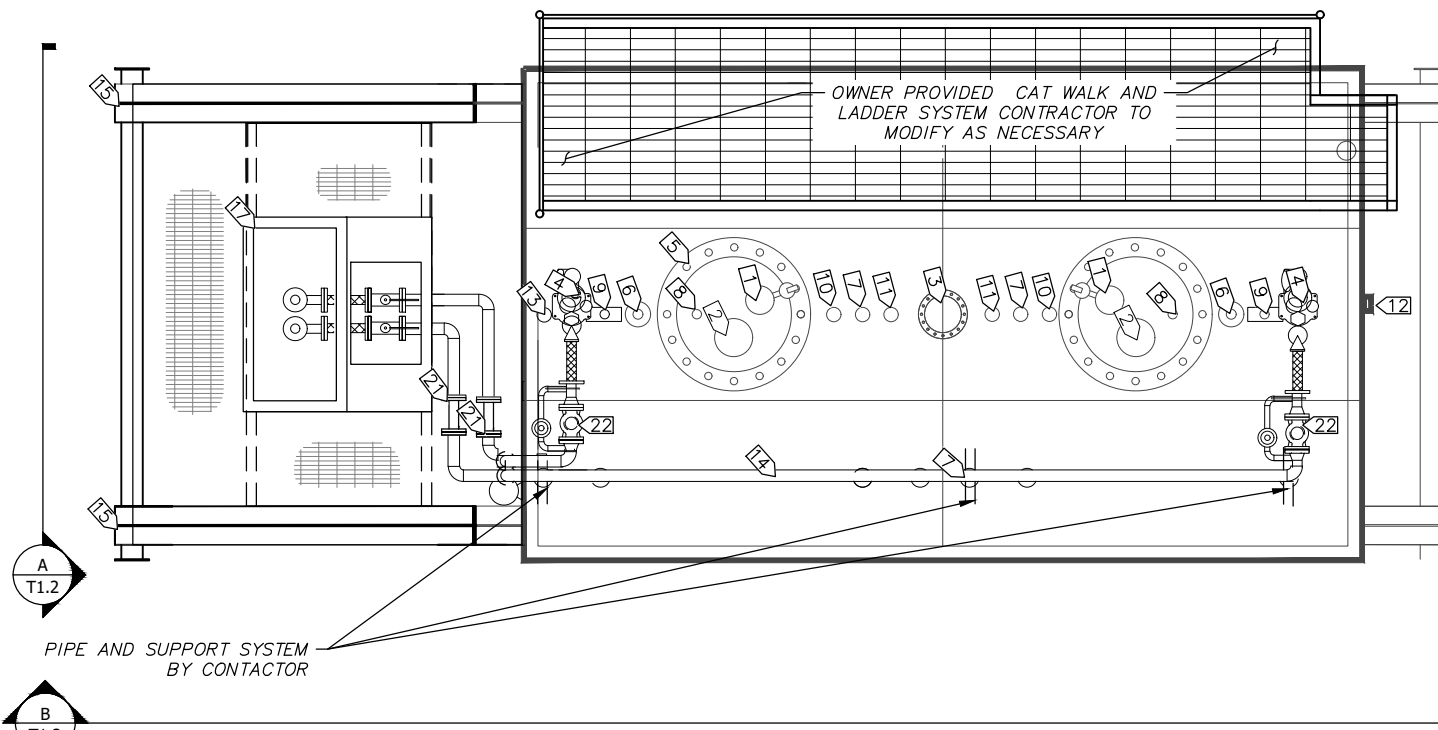
Plot Date	4/23/20
Designed	
Drawn	
Approved	

SPECIFIC NOTES:

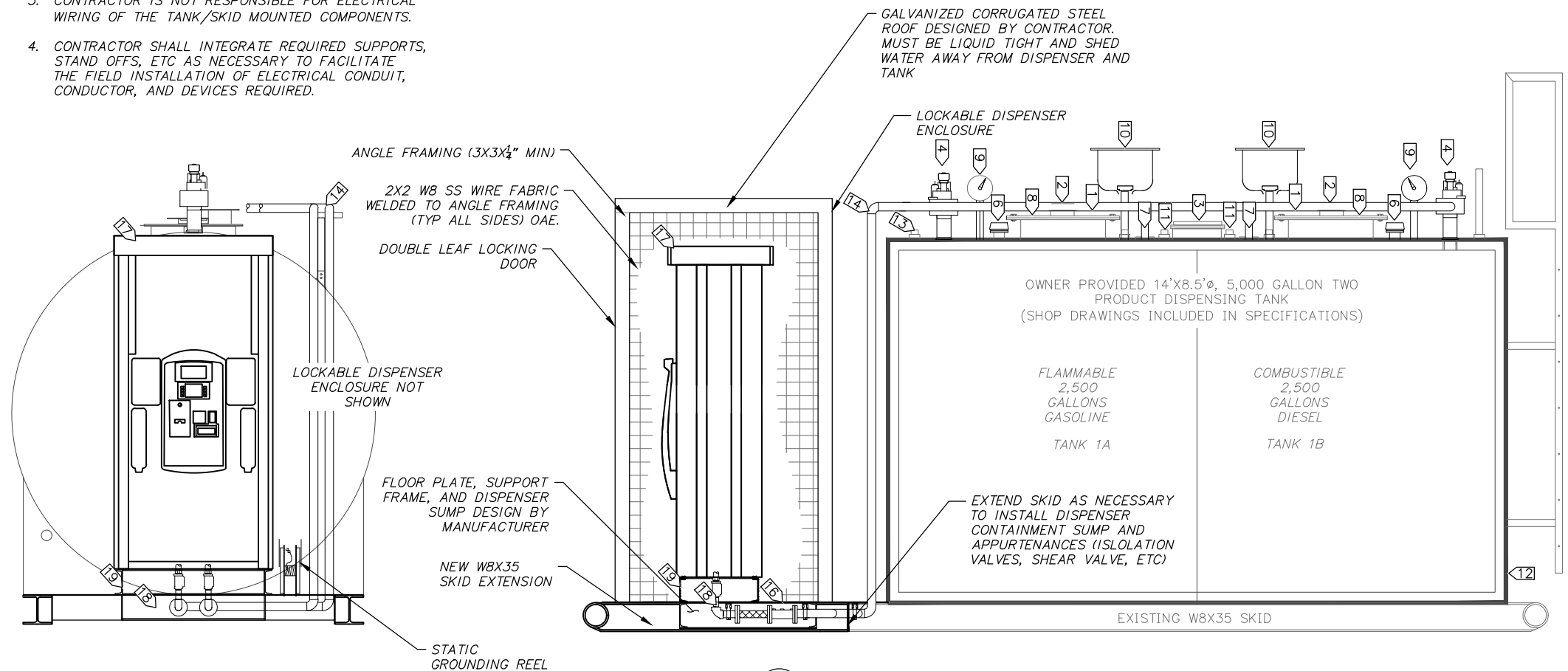
- ① 3" FPT - PRESSURE VACUUM VENT W/ WHISTLE ALARM
- ② 6" FLANGED - EMERGENCY VENT
- ③ 8" FLANGED - EMERGENCY VENT
- ④ 4" FPT - SUBMERSIBLE PUMP
- ⑤ 24" MANHOLE
- ⑥ 3" FLANGED - FLOATS (BY OTHERS)
- ⑦ 2" FPT - WATER DRAW
- ⑧ 2" FPT - SPARE
- ⑨ 2" FPT - CLOCK GAUGE
- ⑩ 4" FPT - 6 GALLON FILL BUCKET W/ FILL LIMITER AND DROP TUBE
- ⑪ 4" FPT - SPARE
- ⑫ 2" CAPPED FLANGED (NOT USED)
- ⑬ 2" FPT - GAUGE HATCH
- ⑭ 2" SCHEDULE 80 STEEL PIPING
- ⑮ SKID EXTENSIONS
- ⑯ DISPENSER FLOOR PLATE
- ⑰ DUAL PRODUCT DISPENSER
- ⑱ DISPENSER CONNECTIVE PIPING
- ⑲ CONTAINMENT SUMP
- ⑳ PIPE SUPPORT (NOT USED)
- ㉑ 2" STRAINER
- ㉒ 2" BALL VALVE WITH 1" PRV

NOTES:

1. 5,000 GALLON TANK SHOWN ON THIS SHEET IS OWNER PROVIDED (SEE ATTACHED SHOP DRAWINGS). ALL OTHER OTHER COMPONENTS SHOWN ON THIS SHEET ARE CONTRACTOR PROVIDED.
2. THIS SHEET SHOWS THE DESIRED FUNCTIONALITY AND GENERAL LAYOUT OF THE PROPOSED SYSTEMS. THE INTENT IS NOT TO SHOW EVERY REQUIRED COMPONENT BUT TO PROVIDE THE CONTRACTOR WITH SUFFICIENT INFORMATION TO FINALIZE THE DESIGN AND PREPARE SHOP DRAWINGS FOR FINAL REVIEW AND APPROVAL PRIOR TO FABRICATION. IT IS ASSUMED THAT THE CONTRACTOR HAS IN-HOUSE DESIGNS AND TECHNIQUES FOR FABRICATING INTEGRAL TANK / DISPENSING SYSTEMS AND IT IS THE CONTRACTOR'S RESPONSIBILITY TO SUPPLEMENT THE SCHEMATIC DRAWINGS AS NECESSARY TO PROVIDE A FULLY FUNCTIONAL, CODE COMPLIANT SYSTEM.
3. CONTRACTOR IS NOT RESPONSIBLE FOR ELECTRICAL WIRING OF THE TANK/SKID MOUNTED COMPONENTS.
4. CONTRACTOR SHALL INTEGRATE REQUIRED SUPPORTS, STAND OFFS, ETC AS NECESSARY TO FACILITATE THE FIELD INSTALLATION OF ELECTRICAL CONDUIT, CONDUCTOR, AND DEVICES REQUIRED.



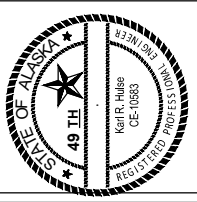
1 PLAN - 5,000 GALLON DOUBLE WALLED TANK
SCALE: NTS



A END VIEW
SCALE: NTS

B SECTION - 5,000 GALLON DOUBLE WALLED TANK
SCALE: NTS

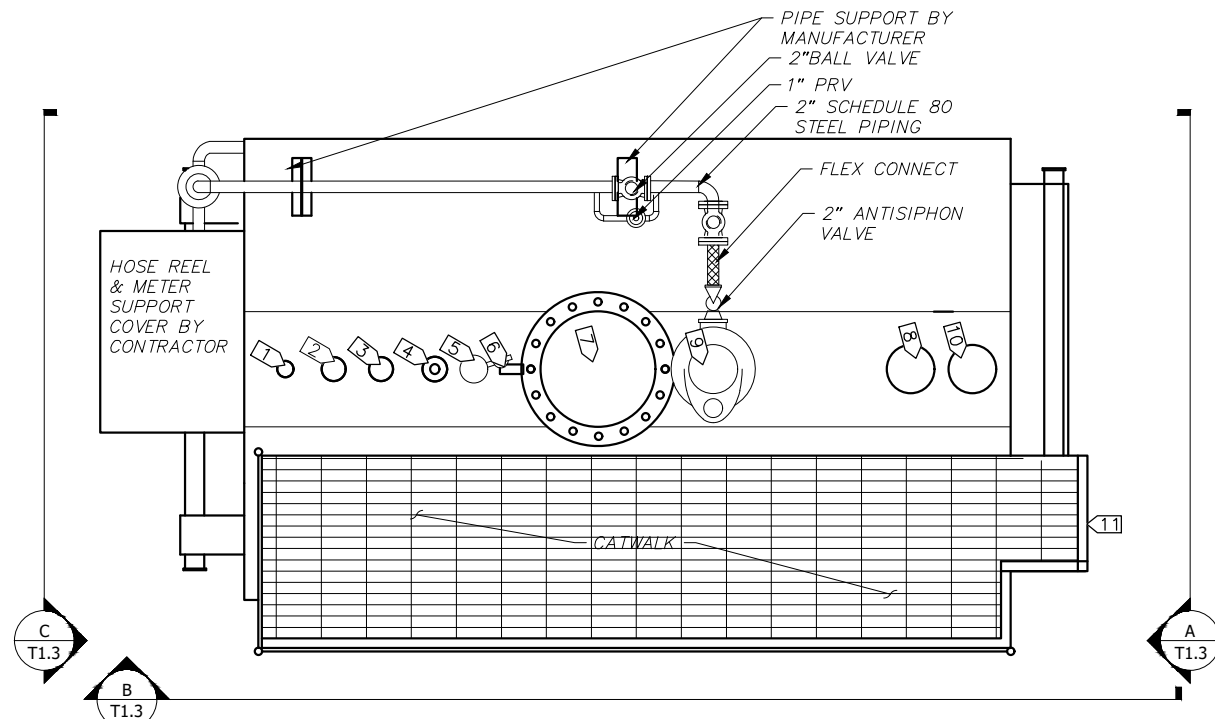
File: J:\JobsData\30411.00 Kasaaan BFU CM\00 CADD\01 Working Set\01 Civil\Procurement\30411.00 KasaaanTank Details.dwg



KASAAAN, ALASKA
TANK PROCUREMENTS DRAWINGS
KASAAAN 5,000 GALLON TANK DETAILS

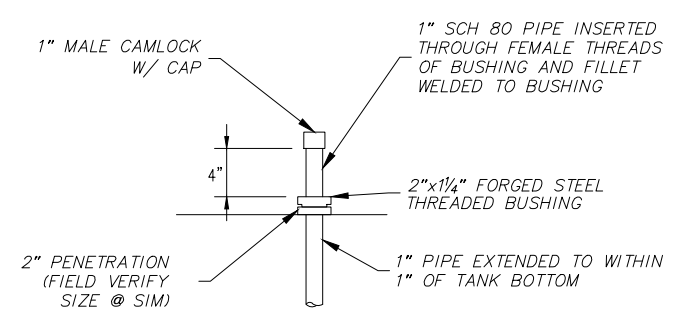
NO.	REVISION	BY	DATE

Plot Date: 4/23/20
 Designed: _____
 Drawn: _____
 Approved: _____



PLAN - 3,000 GALLON DOUBLE WALLED TANK

SCALE: NTS



WATER DRAW DETAIL

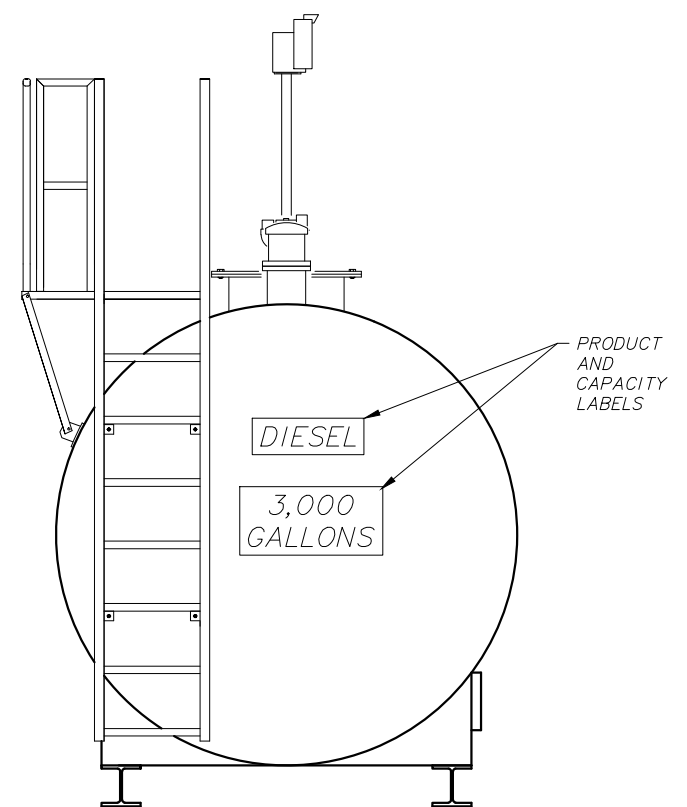
SCALE: NTS

NOTES

1. ALL COMPONENTS ON THIS SHEET ARE CONTRACTOR PROVIDED UNLESS SPECIFICALLY CALLED OUT AS OWNER PROVIDED.
2. THIS SHEET SHOWS THE DESIRED FUNCTIONALITY AND GENERAL LAYOUT OF THE PROPOSED SYSTEMS. THE INTENT IS NOT TO SHOW EVERY REQUIRED COMPONENT BUT TO PROVIDE THE CONTRACTOR WITH SUFFICIENT INFORMATION TO FINALIZE THE DESIGN AND PREPARE SHOP DRAWINGS FOR FINAL REVIEW AND APPROVAL PRIOR TO FABRICATION. IT IS ASSUMED THAT THE CONTRACTOR HAS IN-HOUSE DESIGNS AND TECHNIQUES FOR FABRICATING INTEGRAL TANK / DISPENSING SYSTEMS AND IT IS THE CONTRACTOR'S RESPONSIBILITY TO SUPPLEMENT THE SCHEMATIC DRAWINGS AS NECESSARY TO PROVIDE A FULLY FUNCTIONAL, CODE COMPLIANT SYSTEM.
3. CONTRACTOR IS NOT RESPONSIBLE FOR ELECTRICAL WIRING OF THE TANK/SKID MOUNTED COMPONENTS.
4. CONTRACTOR SHALL INTEGRATE REQUIRED SUPPORTS, STAND OFFS, ETC AS NECESSARY TO FACILITATE THE FIELD INSTALLATION OF ELECTRICAL CONDUIT, CONDUCTOR, AND DEVICES REQUIRED TO POWER THE SYSTEMS. FIELD INSTALLATION OF CONDUIT AND CONDUCTOR BY OTHERS.

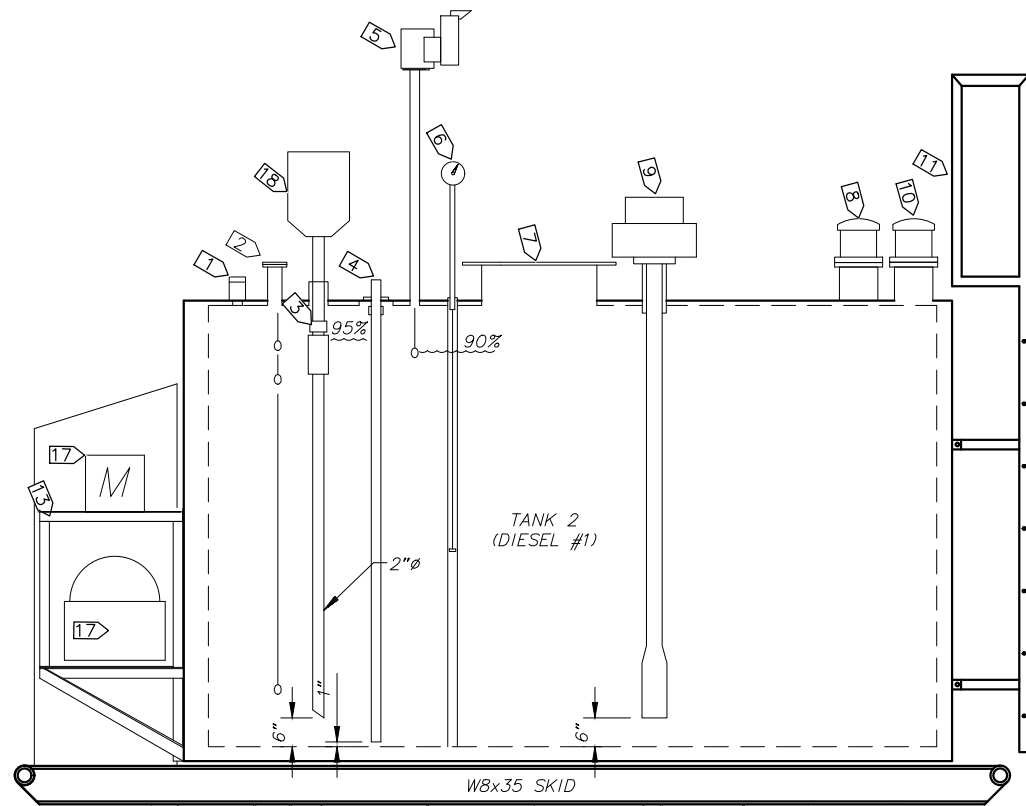
SPECIFIC NOTES:

- 1 2" FPT - GAUGE HATCH INSTALLED ON 2"x4" NIPPLE (SECONDARY TANK MONITOR)
- 2 3" FLANGED - FLOATS (BY OTHERS)
- 3 4" FPT - FILL
- 4 2" FPT - WATER DRAW (2/T1.3)
- 5 3" FPT - PRESSURE VACUUM VENT W/ WHISTLE ALARM
- 6 2" FPT - CLOCK GAUGE AND STILLING WELL
- 7 24" MANHOLE
- 8 8" FLANGED - EMERGENCY VENT
- 9 4" FPT - SUBMERSIBLE PUMP
- 10 8" FLANGED - SECONDARY EMERGENCY VENT
- 11 SHOP FABRICATED BOLT ON LADDER AND CATWALK ASSEMBLY
- 12 2" BALL VALVE
- 13 HOSE REEL SUPPORT SYSTEM
- 14 FILTER
- 15 STATIC GROUNDING REEL (BOND TO GROUND SYSTEM)
- 16 NOZZLE RETENTION/HANG UP ASSEMBLY
- 17 HOSE REEL
- 18 6 GALLON FILL BUCKET W/ FILL LIMITER AND DROP TUBE
- 19 METER



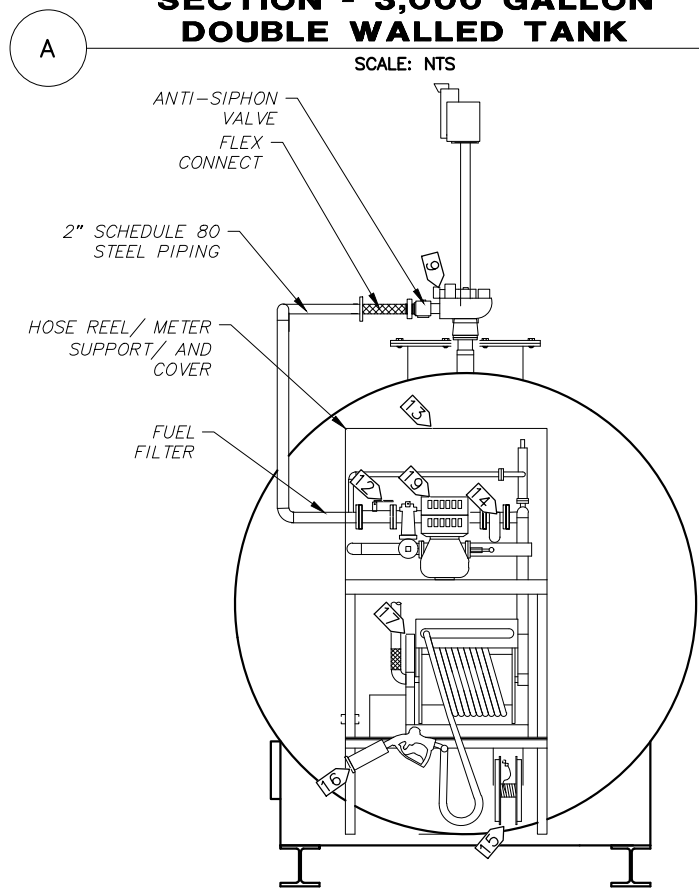
SECTION - 3,000 GALLON DOUBLE WALLED TANK

SCALE: NTS



SECTION - 3,000 GALLON DOUBLE WALLED TANK

SCALE: NTS



SECTION - 3,000 GALLON DOUBLE WALLED TANK

SCALE: NTS



KASAAN, ALASKA
TANK PROCUREMENTS DRAWINGS
KASAAN 3,000 GALLON TANK DETAILS

NO.	REVISION	BY	DATE

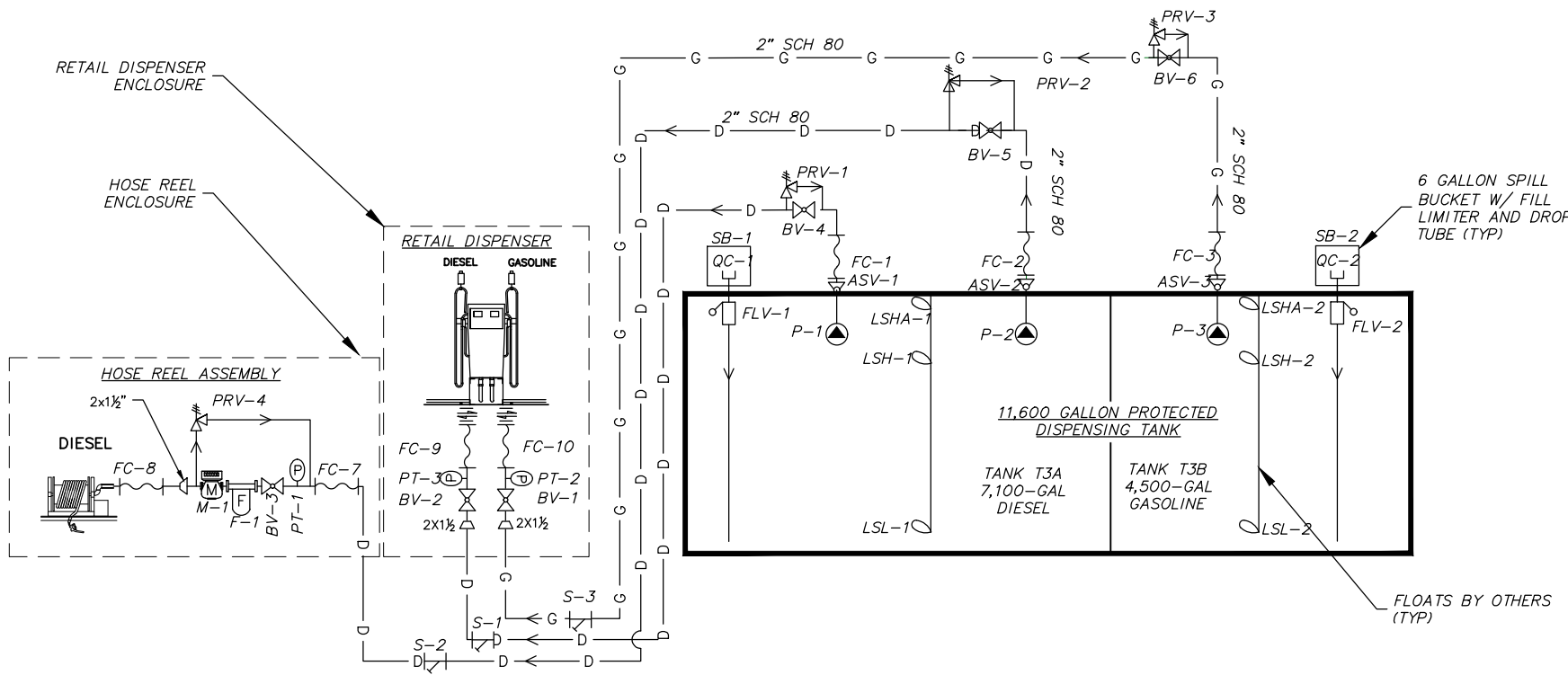
Plot Date 4/23/20
Designed
Drawn
Approved

NOTES

1. SYSTEM REPRESENTATIONS ON THIS SHEET ARE SCHEMATIC. SEE TANK PROCUREMENT SPECIFICATIONS AND TANK DETAIL SHEETS FOR MORE SPECIFIC INFORMATION.
2. NOT ALL TANK APPURTENANCES ARE SHOWN ON THIS SHEET. SEE TANK DETAIL SHEETS AND SHOP DRAINGS FOR ADDITIONAL INFORMATION.
3. THIS SHEET SHOWS THE DESIRED FUNCTIONALITY AND GENERAL LAYOUT OF THE PROPOSED SYSTEMS. THE INTENT IS NOT TO SHOW EVERY REQUIRED COMPONENT BUT TO PROVIDE THE CONTRACTOR WITH SUFFICIENT INFORMATION TO FINALIZE THE DESIGN AND PREPARE SHOP DRAWINGS FOR FINAL REVIEW AND APPROVAL PRIOR TO FABRICATION. IT IS ASSUMED THAT THE CONTRACTOR HAS IN-HOUSE DESIGNS AND TECHNIQUES FOR FABRICATING INTEGRAL TANK / DISPENSING SYSTEMS AND IT IS THE CONTRACTOR'S RESPONSIBILITY TO SUPPLEMENT THE SCHEMATIC DRAWINGS AS NECESSARY TO PROVIDE A FULLY FUNCTIONAL, CODE COMPLIANT SYSTEM.
4. CONTRACTOR IS NOT RESPONSIBLE FOR ELECTRICAL WIRING OF THE TANK/SKID MOUNTED COMPONENTS.
5. CONTRACTOR SHALL INTEGRATE REQUIRED SUPPORTS, STAND OFFS, ETC AS NECESSARY TO FACILITATE THE FIELD INSTALLATION OF ELECTRICAL CONDUIT, CONDUCTOR, AND DEVICES REQUIRED TO POWER THE SYSTEMS. FIELD INSTALLATION OF CONDUIT AND CONDUCTOR BY OTHERS.

SYMBOL LEGEND

	PROPERTY BOUNDARY		ANTI-SIPHON VALVE
	CENTERLINE		BALL VALVE
	CULVERT		MOTOR ACTUATED BALL VALVE
	EDGE OF WATER		CHECK VALVE
	DITCH LINE/DRAINAGE SWALE		GATE VALVE
	DRAINAGE DIRECTION & SLOPE		PRESSURE RELIEF VALVE w/ FLOW DIRECTION
	TRAVELED WAY		SHEAR VALVE
	FILL SLOPE		PRESSURE TEST TAP
	CUT SLOPE		METER
	FENCE LINE		FILTER
	FIRE EXTINGUISHER		FLEXIBLE CONNECTOR
	GROUND ELEVATION CONTOURS		WYE STRAINER (MESH SIZE)
	BOLLARD		FILL LIMITER
	POWER POLE		QUICK COUPLING
	INFORMATION / WARNING SIGN		SUBMERSIBLE PUMP
	SHEET NOTE		VERTICAL PIPE TRANSITION
	SURVEY MONUMENT		REDUCER
	TEST PIT		LEVEL FLOAT SWITCH
	FINISH GRADE ELEVATION		HOSE REEL
	DIAMETER		



1 11,600 GALLON TANK OPERATING SCHEMATIC
NTS

TANK FARM OPERATIONAL NARRATIVE

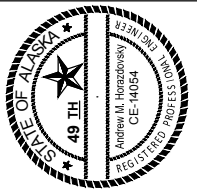
- FILLING TANK FROM FUEL TRUCK**
TANK T3 IS FILLED VIA BARGE TRANSPORTED FUEL TRUCK:
1. BEFORE BEGINNING THE FILL PROCESS THE OPERATOR SHALL CONFIRM SUBMERSIBLE PUMPS ARE OFF AND BALL ALVES ARE CLOSED.
 2. CONNECT THE TRUCK GROUNDING SYSTEM AND ATTACH TRUCK SUPPLIED FUEL TRANSFER HOSE TO CAMLOK LOCATED INSIDE TANK MOUNTED SPILL BUCKET.
 3. BULK TANK SHOULD BE FILLED ONE AT A TIME.
 4. LINE PRESSURE WILL BE SUPPLIED BY THE FUEL TRUCK PUMPING SYSTEM.
 5. THE TANK FARM OPERATOR WILL MONITOR THE FILLING PROCESS VIA CLOCK GAUGES AND GAUGING ROD AT EACH TANK.
 6. AT THE CONCLUSION OF FILLING, STOP PUMP, DISCONNECT FILL HOSE AND SECURE CAMLOK CAP AND SPILL BUCKET COVER.

- BULK TRANSFER/HOSE REEL OPERATION**
HOSE REEL HR-1 IS INTENDED TO FACILITATE THE FILLING OF NVT VEHICLES/HEAVY EQUIPMENT & BULK TRANSFERS.
- PRIOR TO FILLING, TURN OFF ENGINE, CHOCK WHEELS AND CONNECT STATIC GROUNDING CABLE.
 - OPEN ISOLATION VALVE, INPUT DESIRED FUEL VOLUME INTO PRE-SET METER, SET SPRING LOADED MECHANICAL VALVE AND DEPRESS PUMP START BUTTON TO PRESSURIZE HOSE.
 - UNWIND HOSE, PLACE NOZZLE IN APPROVED FUEL CONTAINER AND DEPRESS TRIGGER TO INITIATE FLOW.
 - PROVIDE CONTINUOUS MONITORING DURING FUELING PROCESS. FLOW WILL AUTOMATICALLY STOP AT PRE-SET VOLUME, BUT PUMP WILL CONTINUE TO RUN.
 - WHEN FUELING IS COMPLETE, DEPRESS PUMP STOP BUTTON, WIND HOSE ONTO REEL, HANG UP NOZZLE, AND NOTE VOLUME OF FUEL DISPENSED.

RETAIL SALES DISPENSER OPERATION

RETAIL FUEL CREDIT/DEBIT CARD SALES TRANSACTIONS WILL BE CONDUCTED VIA ELECTRONIC CARD READER LOCATED AT THE RETAIL DISPENSER. THE ELECTRONIC POINT OF SALE SYSTEM WILL BE LOCATED AT THE OLD CLINIC BUILDING (NEW OFFICE). CASH SALES WILL REQUIRE AN ATTENDANT AND WILL BE INITIATED FROM THE POS SYSTEM.

File: J:\JobsData\30411.00 Kasoon BFU CM\00 CADD\01 Working Set\01 Civil\Procurement\30411.00 Tatitlek Operating Schematic.dwg



TATITLEK, ALASKA
TANK PROCUREMENTS DRAWINGS
TATITLEK OPERATING SCHEMATIC

NO.	REVISION	BY	DATE

Plot Date	4/23/20
Designed	-
Drawn	-
Approved	-

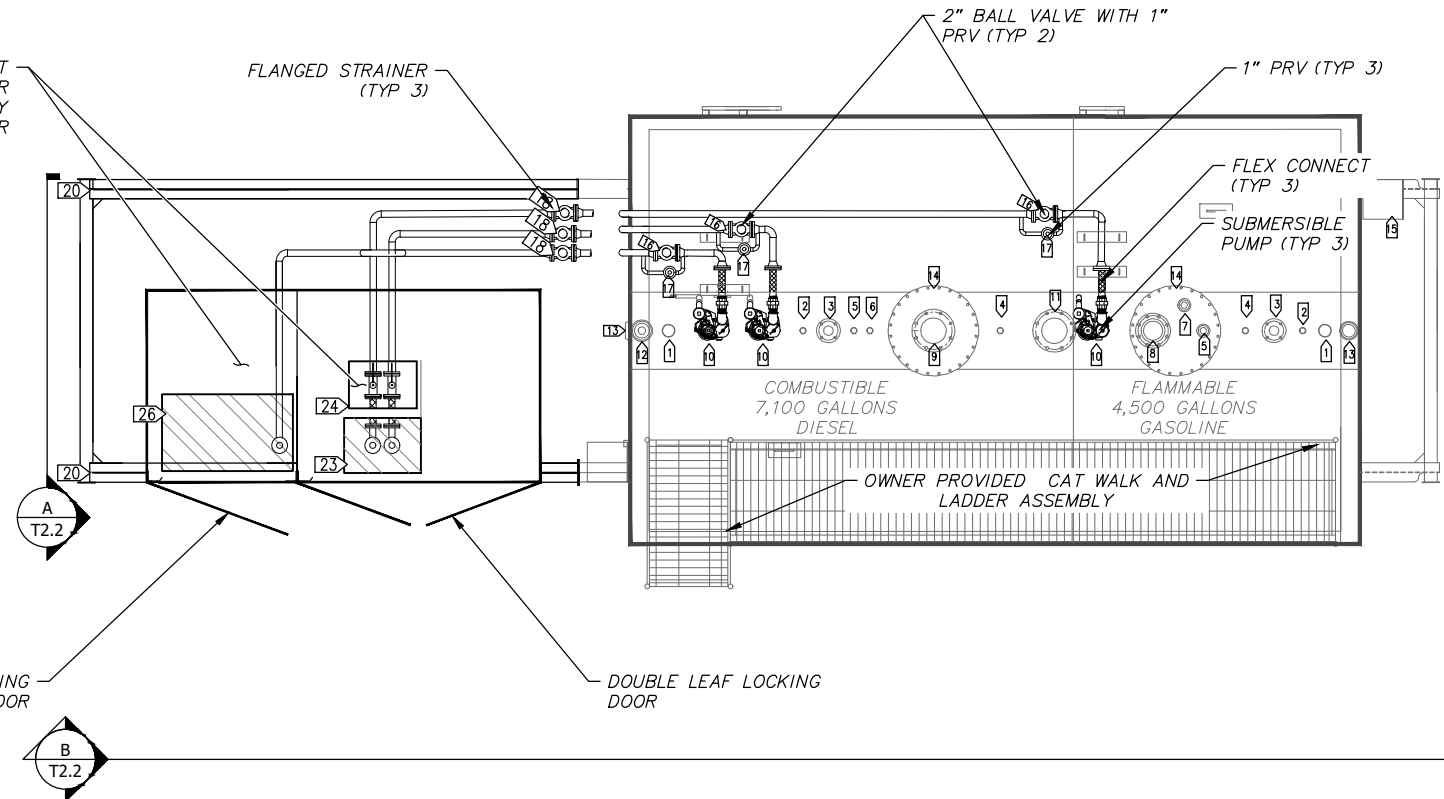
SPECIFIC TANK NOTES:

- 1 4" FPT - 6 GALLON SPILL BUCKET W/FILL LIMITER AND DROP TUBE
- 2 2" FPT - WATER DRAW
- 3 3" FLANGED - FLOATS (BY OTHERS)
- 4 2" FPT - CLOCK GAUGE
- 5 2" FLANGED - PRESSURE VACUUM VENT WITH WHISTLE ALARM. VENT MUST BE 12' ABOVE FINISHED GRADE. FEED CABLE THROUGH PIPE PRIOR TO CONNECTING TO TANK. SET WHISTLE TO ALARM AT 90% FULL.
- 6 2" FLANGED - GAUGE HATCH
- 7 2" FPT - GAUGE HATCH
- 8 6" FLANGED - E VENT
- 9 8" FLANGED - EVENT
- 10 4" FPT - SUBMERSIBLE PUMP
- 11 8" FPT - FLANGED SECONDARY E VENT
- 12 4" T.F - INNER TANK HEAD (NOT USED)
- 13 OUTER TANK HEAD (NOT USED)
- 14 24" MANHOLE
- 15 TANK MOUNT LIGHT POLE BASE (NOT USED)
- 16 2" BALL VALVE
- 17 1" PRV
- 18 2" STRAINER
- 19 2" SCHEDULE 80 STEEL PIPING
- 20 SKID EXTENSIONS
- 21 DISPENSER FLOOR PLATE AND 4" RISER
- 22 DUAL PRODUCT DISPENSER
- 23 DISPENSER CONNECTIVE PIPING
- 24 CONTAINMENT SUMP
- 25 PIPE SUPPORT (NOT USED)
- 26 HOSE REEL ASSEMBLY

NOTES:

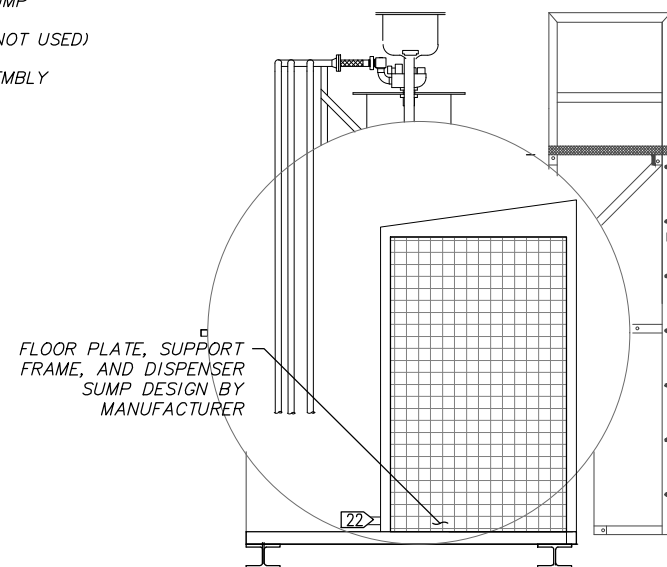
1. 11,600 GALLON TANK SHOWN ON THIS SHEET IS OWNER PROVIDED (SEE ATTACHED SHOP DRAWINGS). ALL OTHER COMPONENTS SHOWN ON THIS SHEET ARE CONTRACTOR PROVIDED.
2. THIS SHEET SHOWS THE DESIRED FUNCTIONALITY AND GENERAL LAYOUT OF THE PROPOSED SYSTEMS. THE INTENT IS NOT TO SHOW EVERY REQUIRED COMPONENT BUT TO PROVIDE THE CONTRACTOR WITH SUFFICIENT INFORMATION TO FINALIZE THE DESIGN AND PREPARE SHOP DRAWINGS FOR FINAL REVIEW AND APPROVAL PRIOR TO FABRICATION. IT IS ASSUMED THAT THE CONTRACTOR HAS IN-HOUSE DESIGNS AND TECHNIQUES FOR FABRICATING INTEGRAL TANK / DISPENSING SYSTEMS AND IT IS THE CONTRACTOR'S RESPONSIBILITY TO SUPPLEMENT THE SCHEMATIC DRAWINGS AS NECESSARY TO PROVIDE A FULLY FUNCTIONAL, CODE COMPLIANT SYSTEM.
3. CONTRACTOR IS NOT RESPONSIBLE FOR ELECTRICAL WIRING OF THE TANK/SKID MOUNTED COMPONENTS.
4. CONTRACTOR SHALL INTEGRATE REQUIRED SUPPORTS, STAND OFFS, ETC AS NECESSARY TO FACILITATE THE FIELD INSTALLATION OF ELECTRICAL CONDUIT, CONDUCTOR, AND DEVICES REQUIRED.

FLOOR PLATE, SUPPORT FRAME, AND DISPENSER SUMP DESIGN BY MANUFACTURER



11,600 GALLON DUAL PRODUCT DISPENSING TANK PLAN VIEW

SCALE: NTS

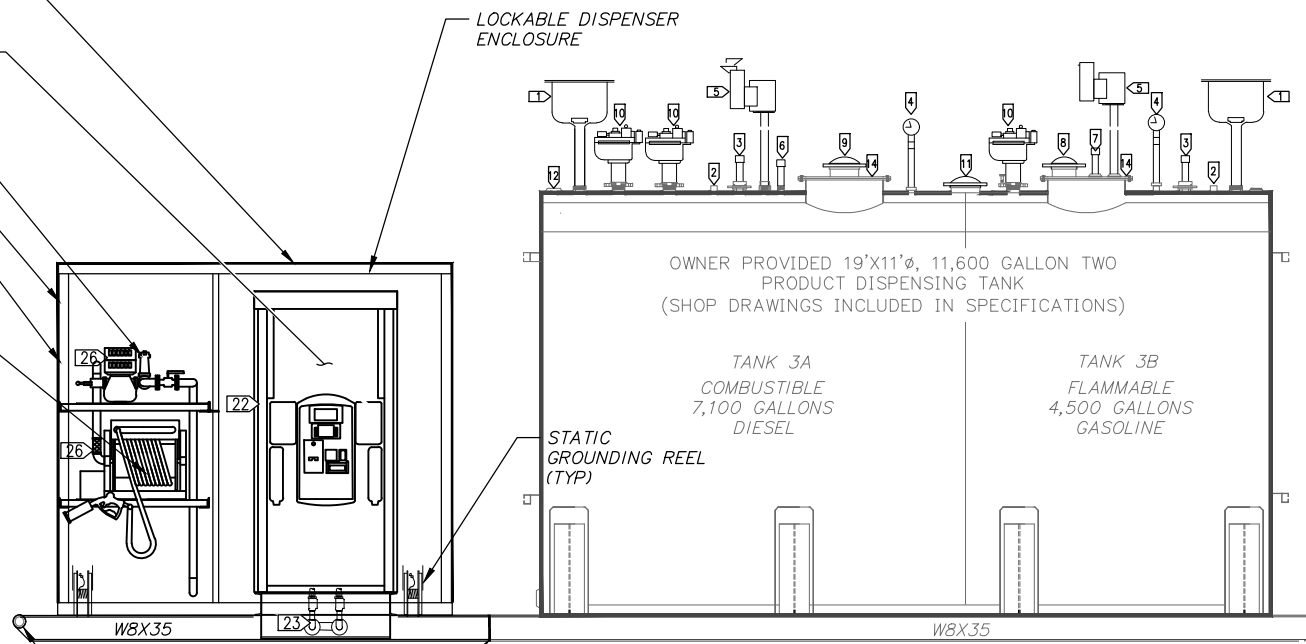


END VIEW

SCALE: NTS

GALVANIZED CORRUGATED STEEL ROOF DESIGNED BY CONTRACTOR. MUST BE LIQUID TIGHT AND SHED WATER AWAY FROM DISPENSER AND TANK

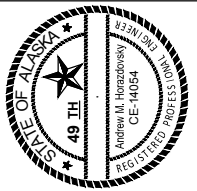
TWO PRODUCT RETAIL DISPENSER
METER
ANGLE FRAMING (3X3X $\frac{1}{4}$ " MIN)
2X2 W8 SS WIRE FABRIC WELDED TO ANGLE FRAMING (TYP ALL SIDES) OAE.
HOSE REEL



11,600 GALLON DUAL PRODUCT DISPENSING TANK ELEVATION VIEW

SCALE: NTS

File: J:\JobsData\30411.00 Kasoon BFU CM\00 CADD\01 Working Set\01 Civil\Procurement\30411.00 Tatitlek Tank Details.dwg



TATITLEK, ALASKA
TANK PROCUREMENT DRAWINGS
TATITLEK 11,600 GALLON TANK DETAILS

NO.	REVISION	BY	DATE

Plot Date 4/23/20
Designed
Drawn
Approved

Sheet No. T2.2