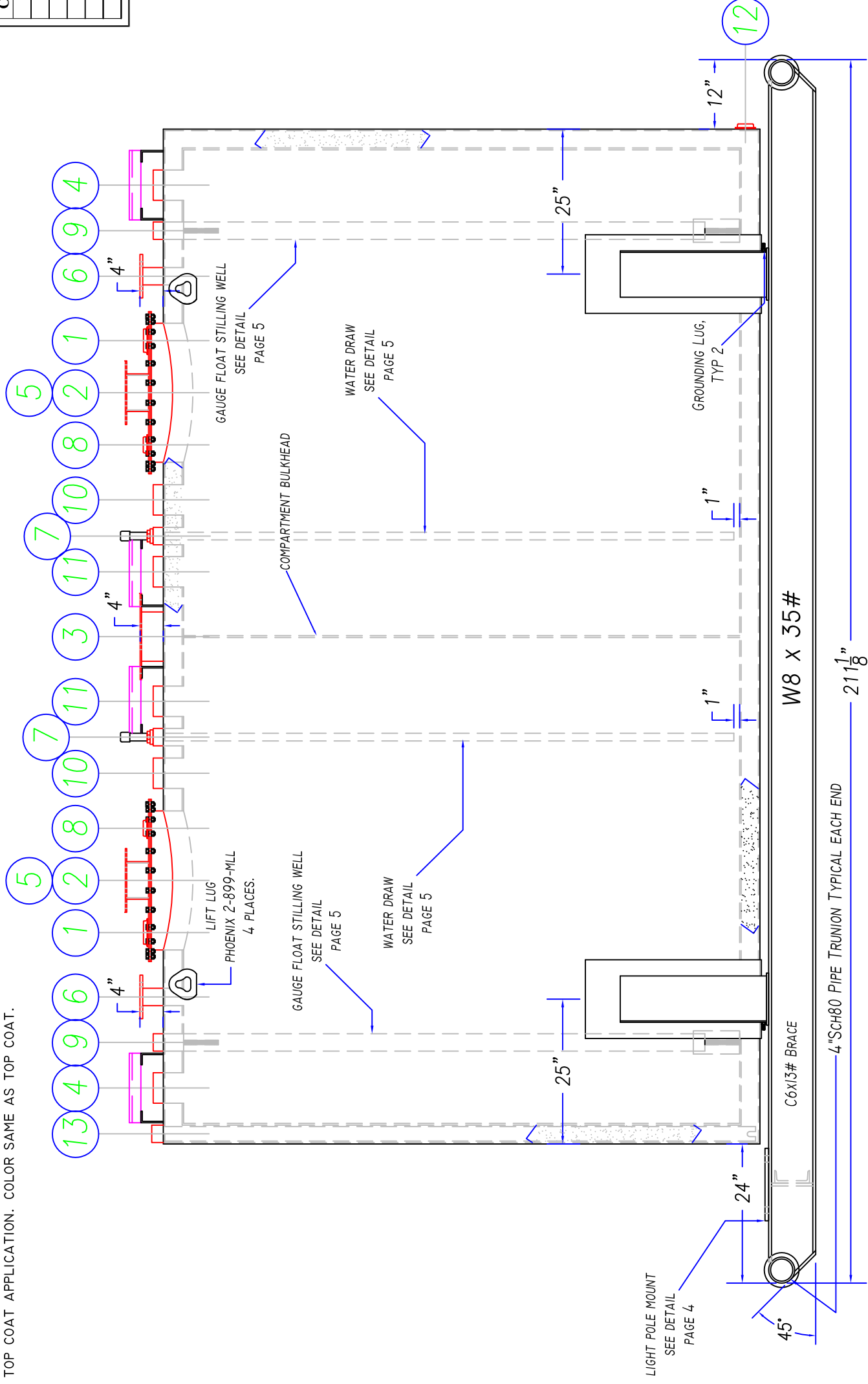


NOTES:

- TANK JOINTS:
PRIMARY TANK HEAD JOINTS SHALL INCORPORATE DOUBLE WELDED LAP JOINTS IN ACCORDANCE WITH UL 142 FIGURE 6.2, No.6.
SECONDARY TANK HEAD JOINTS SHALL BE SINGLE WELDED GROOVE WELD IN ACCORDANCE WITH UL 124 FIGURE 6.2 No.8.
PRIMARY AND SECONDARY TANK SHELL JOINTS SHALL BE DOUBLE WELDED IN ACCORDANCE WITH UL 142 FIGURE 6.1 No.1.
SEAMS ON ENDS OF ALL HORIZONTAL TANKS SHALL BE EITHER VERTICAL OR HORIZONTAL. SKEWED SEAMS SHALL BE CAUSE FOR REJECTION OF TANKS.
- LABELLING:
ALL TANK PENETRATIONS SHALL BE LABELED IN ACCORDANCE WITH FITTING SCHEDULE IN 2" HIGH BLACK LETTERING.
- PAINT:
SPIO BLAST, PRIME COAT DEVOE CATHA-COAT 302H INORGANIC ZINC PRIMER 3 MILS DFT, INTERMEDIATE COAT DEVOE BAR-RUST 236 5-6 MILS DFT, TOP COAT DEVOE DEVTHANE 389 2-3 MILS DFT.
ALL COATS SHALL BE CONTRASTING COLORS, TOP COAT SHALL BE WHITE.
TRACTION COATING: PROVIDE SLIP RESISTANT SURFACE COATING ALONG TOP OF TANK AS SHOWN. SLIP RESISTANT COATING TO CONSIST OF ALUMINUM OXIDE AGGREGATE (36 MESH SIZE) MIXED WITH DEVTHANE 389 TOP COAT AT RATE OF 1 POUND OF AGGREGATE PER GALLON OF COATING. APPLY ONE COAT OF MIXTURE BY ROLLER WITHIN 48 HOURS OF FINAL TOP COAT APPLICATION. COLOR SAME AS TOP COAT.

FITTING SCHEDULE

NO.	Description
1	3" FNPT CAST STEEL TANK FLANGE- VENT
2	6" FLANGED EMERGENCY VENT ADAPTER- E-VENT
3	8" FLANGED EMERGENCY VENT ADAPTER- E-VENT
4	4" FNPT FIREGUARD COUPLING- PUMP
5	24" BOLTED MANWAY WITH GASKET/LID/NUTS AND BOLTS
6	3" 150# RAISED FACE FLANGE- FLOAT SWITCH
7	2" FNPT FIREGUARD COUPLING- WATER DRAW
8	2" FNPT CAST STEEL TANK FLANGE- GAUGE HATCH
9	2" FNPT FIREGUARD COUPLING- CLOCK GAUGE
10	4" FNPT FIREGUARD COUPLING- SPARE
11	4" FNPT FIREGUARD COUPLING- FILL
12	2" FNPT CAST STEEL TANK FLANGE FOR INSULATION FILL
13	2" FNPT COUPLING WITH PIPE-SECONDARY MONITOR



NOMINAL TANK SIZE	5,000	2.5K/2.5K Split
INSIDE DIMENSIONS		
LENGTH INNER TANK	168"	
LENGTH COMP.1/2	83.875"	
OUTER LENGTH	174.625"	
DIA. INNER TANK	96"	
DIA. OUTER TANK	102.5"	
DEG. SECONDARY WRAP	360°	
OVERALL	212"L x 105"W x 119"H	
CAPACITIES		
INNER TANK (GALLONS)	5,000	
COMPARTMENT 1/2	2,500	
OUTER TANK (GALLONS)	6,200	
MATERIALS		
INNER SHELL	1/4"	
INNER HEADS WO BRACE	5/16"	
INNER BULKHEAD	5/16"	
OUTER SHELL	1/4"	
OUTER HEADS WO BRACE	1/4"	
OUTER HEADS W C4.5.4#	-	
SKID CHANNELS	W8x35# WF	
OTHER DATA		
VENT SIZE	3"	
Cu Ft/Hr INNER COMP 1/2	215,010	
Cu Ft/Hr OUTER TANK	301,740	
E. VENT INNER COMP 1/2	6"	
E. VENT OUTER TANK	8"	
APPROX. WEIGHT	18,900#	

These drawings represent a proprietary design of Greer Steel Inc., and may not be used for source design or procurement purposes by other than Greer Steel Inc.

GREER STEEL INC.

3117 107th Street S.

Lakewood, WA 98499

Phone (253)581-4100 Fax (253)581-4300

5,000 Gallon UL-2085

FIREGUARD, Dual Product, Skid Mounted

Aboveground Storage Tank

Mascott Equipment

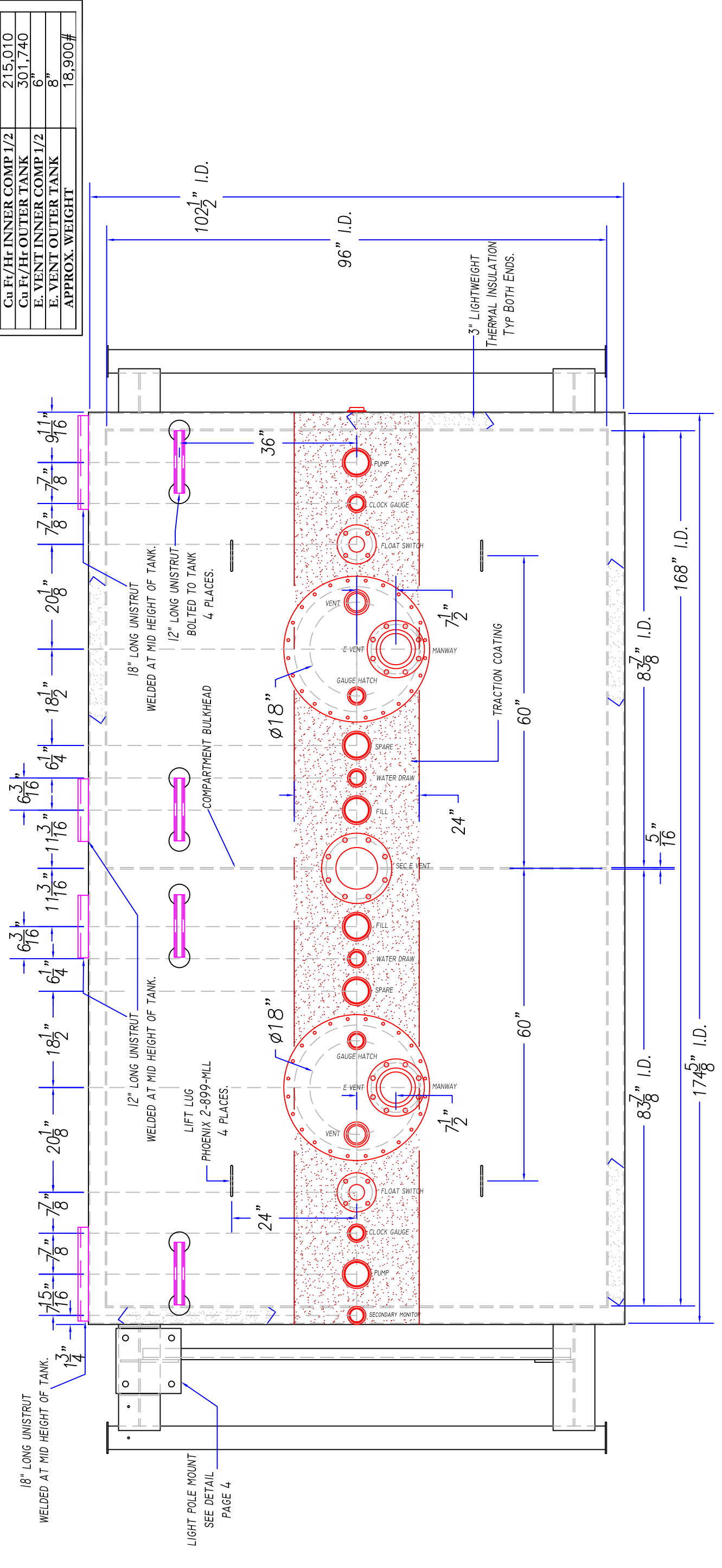
DRAWN:	J. LORENZ
DATE:	7/28/2015
CHECKED:	-
DATE:	-
REVISED:	-
FILE:	MAS15DPFGSK5K
JOB NO:	-
SCALE:	NTS
SHEET No.	1
REV	8
OF	0

DRAWN:	J.LORENZ
DATE:	7/28/2015
CHECKED:	-
DATE:	-
REVISED:	-
FILE:	MAS15DPFGSK5K
JOB NO.:	-
SCALE:	NTS
SHEET No.	2
REV	8
OF	0

These drawings represent a proprietary design of Greer Steel Inc., and may not be used for source design or procurement purposes by other than Greer Steel Inc.

NOMINAL TANK SIZE	5,000	2.5K/2.5K Split
INSIDE DIMENSIONS		
LENGTH INNER TANK	168"	
LENGTH COMP. 1/2	83.875"	
OUTER LENGTH	174.625"	
DIA. INNER TANK	96"	
DIA. OUTER TANK	102.5"	
DEG. SECONDARY WRAP	360°	
OVERALL	212"L x 105"W x 119"H	
CAPACITIES		
INNER TANK (GALLONS)	5,000	
COMPARTMENT 1/2	2,500	
OUTER TANK (GALLONS)	6,200	
MATERIALS		
INNER SHELL	1/4"	
INNER HEADS WO BRACE	5/16"	
INNER BULKHEAD	5/16"	
OUTER SHELL	1/4"	
OUTER HEADS WO BRACE	1/4"	
OUTER HEADS W C4.5.4#	-	
SKID CHANNELS	W8x35# WF	
OTHER DATA		
VENT SIZE	3"	
Cu Ft/Hr INNER COMP 1/2	215,010	
Cu Ft/Hr OUTER TANK	301,740	
E. VENT INNER COMP 1/2	6"	
E. VENT OUTER TANK	8"	
APPROX. WEIGHT	18,900#	

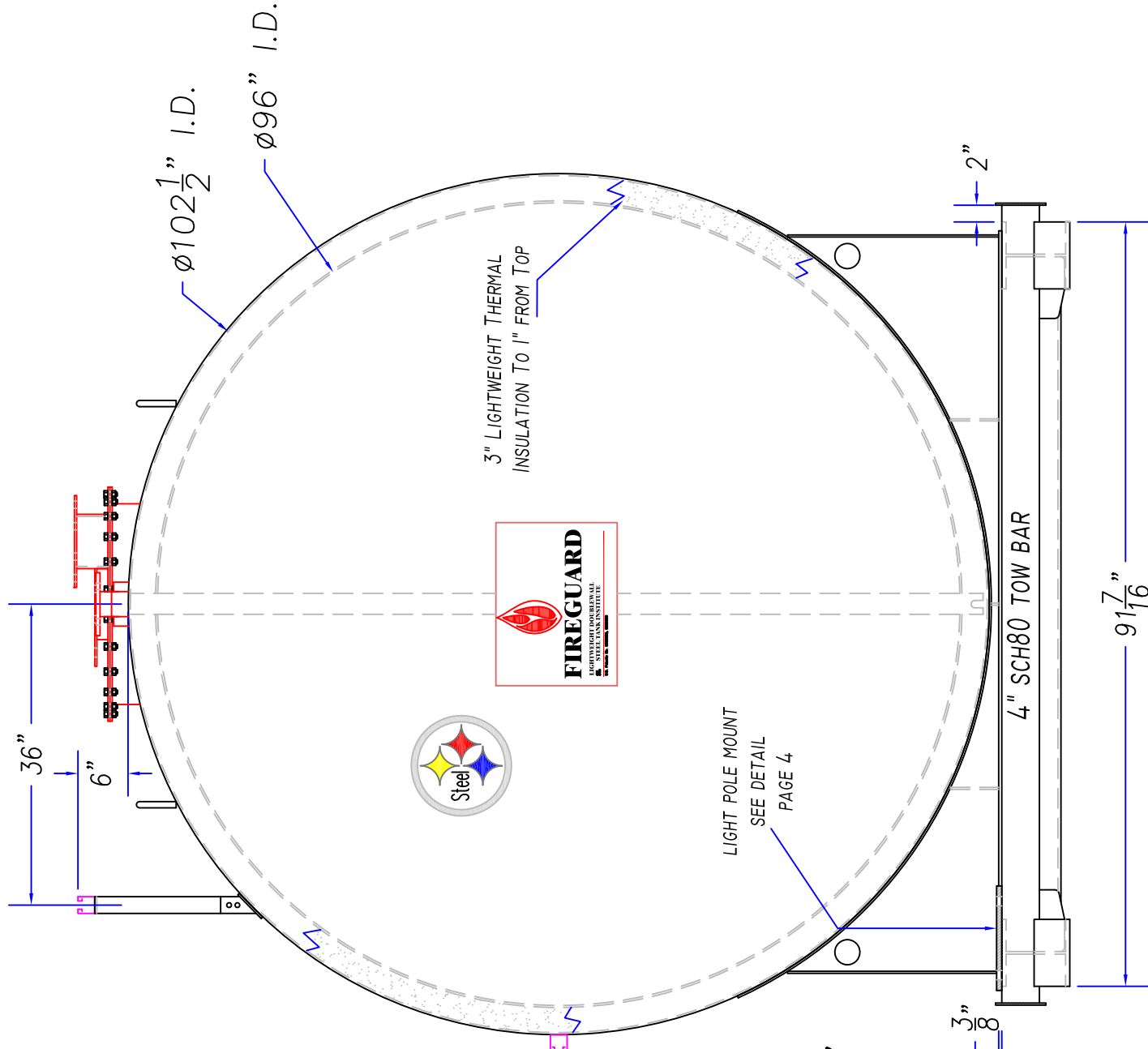
- NOTES:
- TANK JOINTS:
 - PRIMARY TANK HEAD JOINTS SHALL INCORPORATE DOUBLE WELDED LAP JOINTS IN ACCORDANCE WITH UL 142 FIGURE 6.2, No. 6.
 - SECONDARY TANK HEAD JOINTS SHALL BE SINGLE WELDED GROOVE WELD IN ACCORDANCE WITH UL 124 FIGURE 6.2 No. 8.
 - PRIMARY AND SECONDARY TANK SHELL JOINTS SHALL BE DOUBLE WELDED IN ACCORDANCE WITH UL 142 FIGURE 6.1 No. 1.
 - SEAMS ON ENDS OF ALL HORIZONTAL TANKS SHALL BE EITHER VERTICAL OR HORIZONTAL. SKEWED SEAMS SHALL BE CAUSE FOR REJECTION OF TANKS.
 - LABELING:
 - ALL TANK PENETRATIONS SHALL BE LABELED IN ACCORDANCE WITH FITTING SCHEDULE IN 2" HIGH BLACK LETTERING.
 - PAINT:
 - SPIO BLAST, PRIME COAT DEVOE CATHA-COAT 302H INORGANIC ZINC PRIMER 3 MILS DFT, INTERMEDIATE COAT DEVOE BAR-RUST 236 5-6 MILS DFT, TOP COAT DEVOE DEVTHANE 389 2-3 MILS DFT.
 - ALL COATS SHALL BE CONTRASTING COLORS, TOP COAT SHALL BE WHITE.
 - TRACTION COATING: PROVIDE SLIP RESISTANT SURFACE COATING ALONG TOP OF TANK AS SHOWN. SLIP RESISTANT COATING TO CONSIST OF ALUMINUM OXIDE AGGREGATE (36 MESH SIZE) MIXED WITH DEVTHANE 389 TOP COAT AT RATE OF 1 POUND OF AGGREGATE PER GALLON OF COATING. APPLY ONE COAT OF MIXTURE BY ROLLER WITHIN 48 HOURS OF FINAL TOP COAT APPLICATION. COLOR SAME AS TOP COAT.



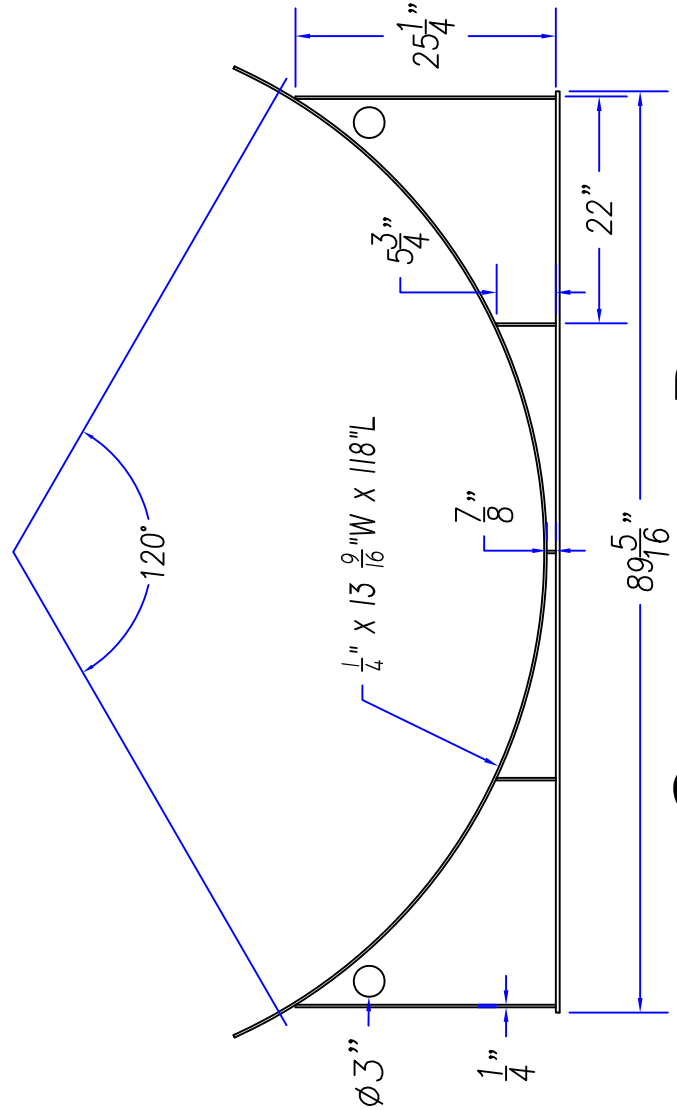
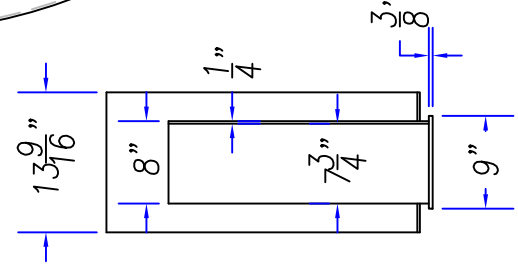
LIGHT POLE MOUNT
SEE DETAIL
PAGE 4

DRAWN:	J. LORENZ
DATE:	7/28/2015
CHECKED:	-
DATE:	-
REVISED:	-
FILE:	MAS15DPFGSK5K
JOB NO.:	-
SCALE:	NTS
SHEET No.	3
REV	8
OF	0

These drawings represent a proprietary design of Greer Steel Inc., and may not be used for source design or procurement purposes by other than Greer Steel Inc.



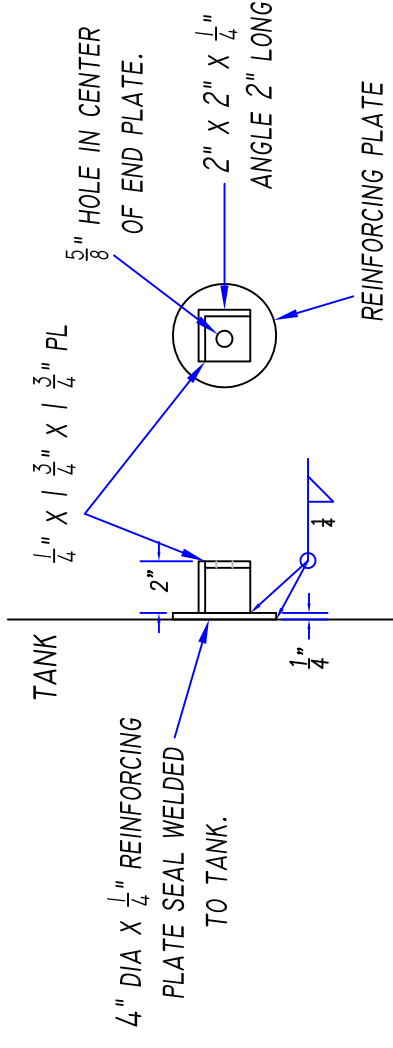
LEFT END VIEW



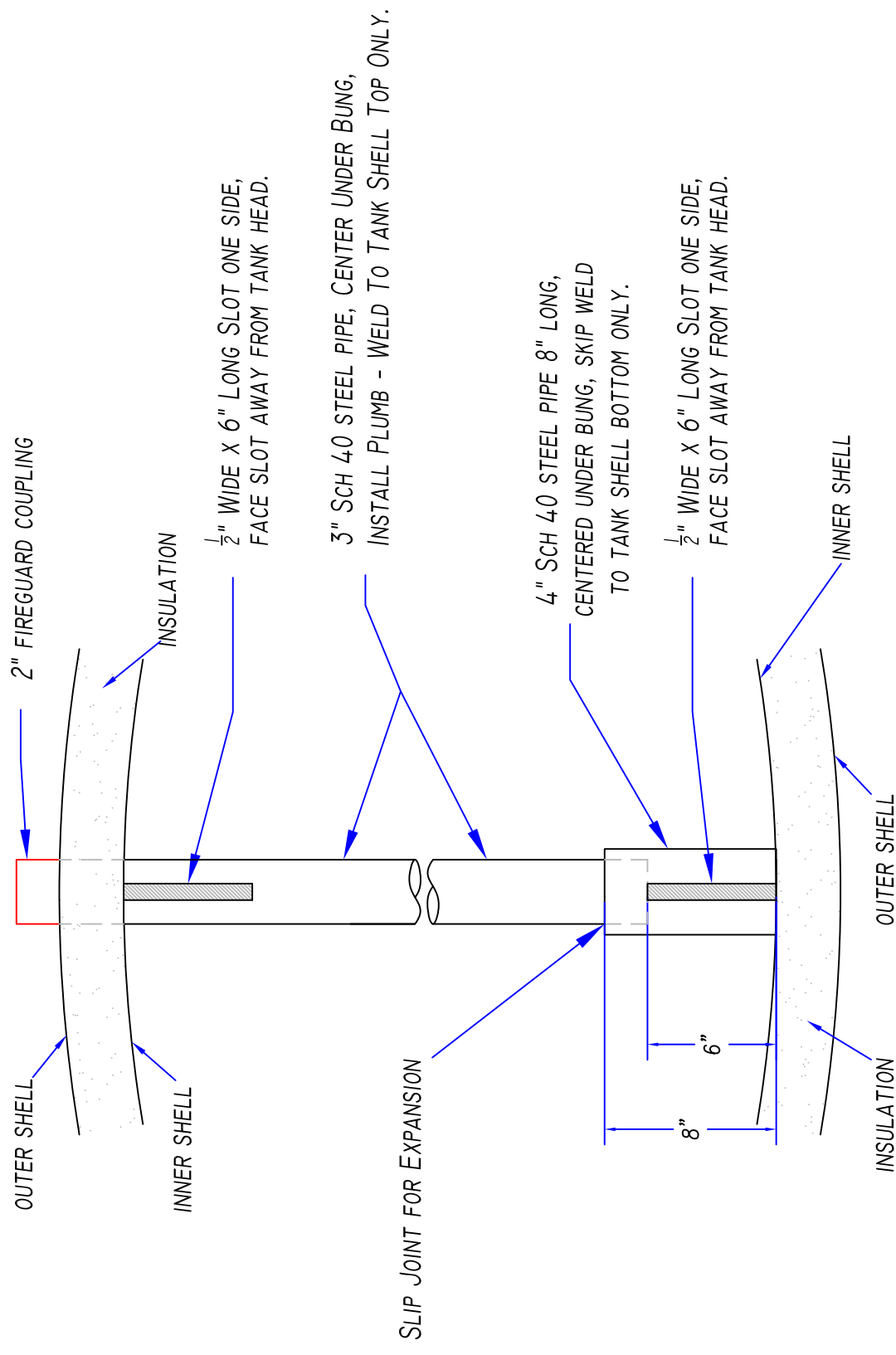
SADDLE DETAIL

DRAWN:	J. LORENZ
DATE:	7/28/2015
CHECKED:	-
DATE:	-
REVISED:	-
FILE:	MAS15DPFGSK5K
JOB NO.:	-
SCALE:	NTS
SHEET No.	5
OF	8
REV	0

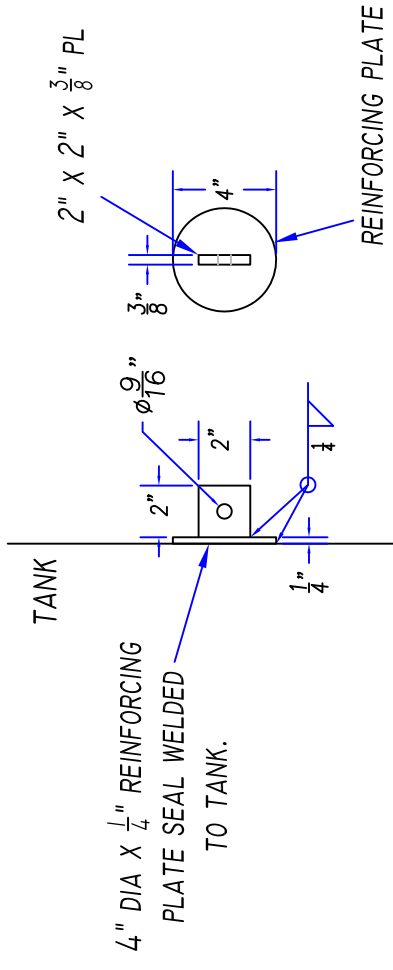
These drawings represent a proprietary design of Greer Steel Inc., and may not be used for source design or procurement purposes by other than Greer Steel Inc.



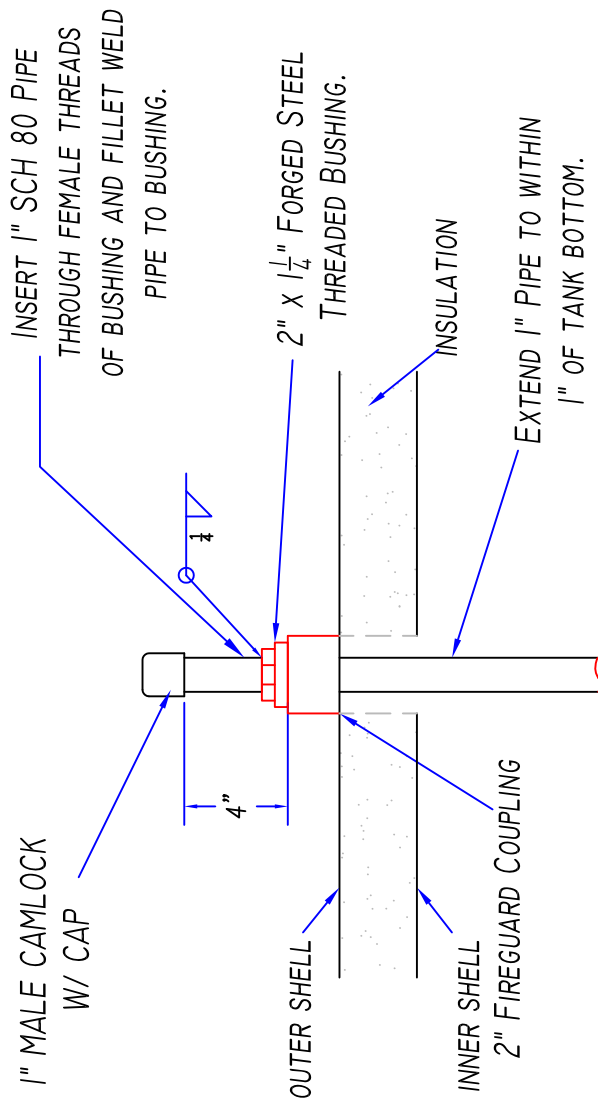
STRUT STAND OFF



GAUGE FLOAT STILLING WELL



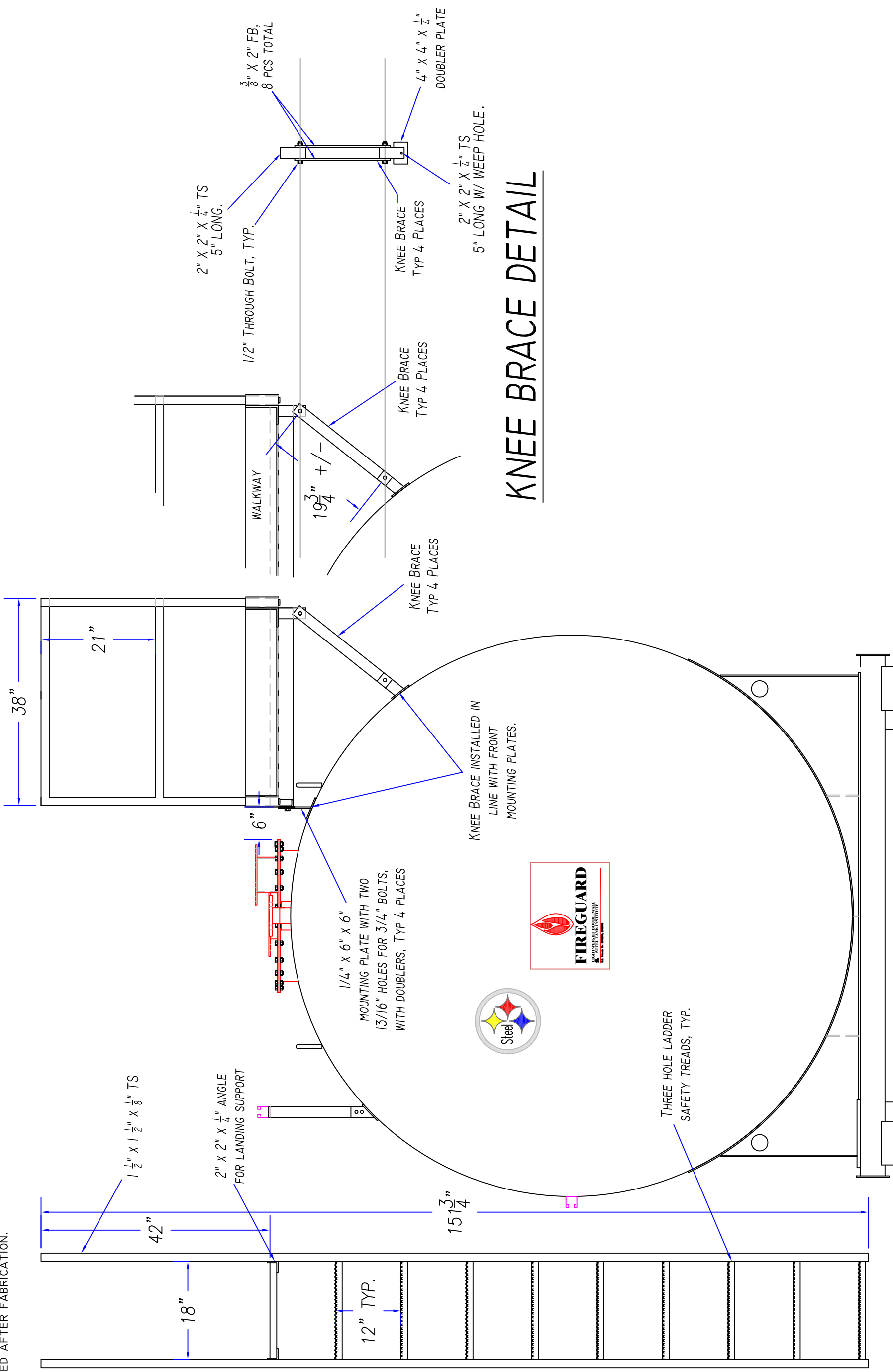
LADDER STAND OFF



TYP WATER DRAW

NOTES:

WALKWAY, GRATING, HANDRAIL AND LADDER TO BE HOT DIPPED GALVANIZED AFTER FABRICATION.



KNEE BRACE DETAIL

LADDER DETAIL

WALKWAY SECTION VIEW

GREER STEEL
INC.

3117 107th Street S.
Lakewood, WA 98499

Phone (253)581-4100 Fax (253)581-4300

5,000 Gallon UL-2085
FIREGUARD, Dual Product, Skid Mounted
Aboveground Storage Tank
Mascott Equipment

DRAWN:	J. LORENZ
DATE:	7/28/2015
CHECKED:	-
DATE:	-
REVISED:	-
FILE:	MAS15DPFGSK5K
JOB NO.:	-
SCALE:	NTS
SHEET No.	6
REV	8
OF	0

These drawings represent a proprietary design of Greer Steel Inc., and may not be used for source design or procurement purposes by other than Greer Steel Inc.

NOTES:

WALKWAY, GRATING, HANDRAIL AND LADDER TO BE HOT DIPPED GALVANIZED AFTER FABRICATION.

WALKWAY DECK TO BE 1/4" X 3/16" SMOOTH TOP GALVANIZED BAR GRATING.

REMOVABLE HANDRAIL

6"

15 3/4"

TANK HEAD

48"

32"

52"

52"

52"

13 1/8"

KNEE BRACE
TYP 4 PLACES

LADDER STAND OFF
SEE DETAIL
PAGE 4

11"

83 3/4"

167 1/2"

83 3/4"

42" top of Grating to top of Handrail

1 1/2" X 1 1/2" X 1/8" TS
HANDRAIL, TYP.

1 1/4" X 3/16" SMOOTH TOP GALVANIZED
BAR GRATING FOR DECKING.

21"

21"

6"

52"

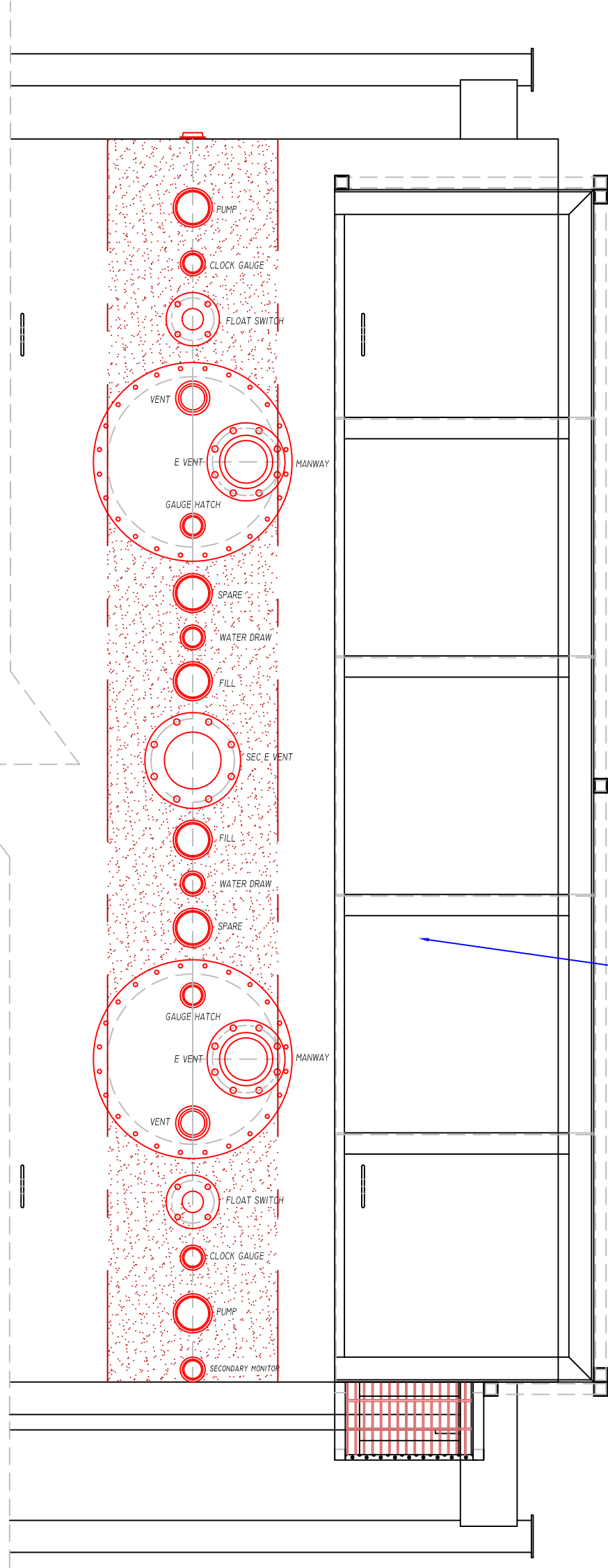
52"

52"

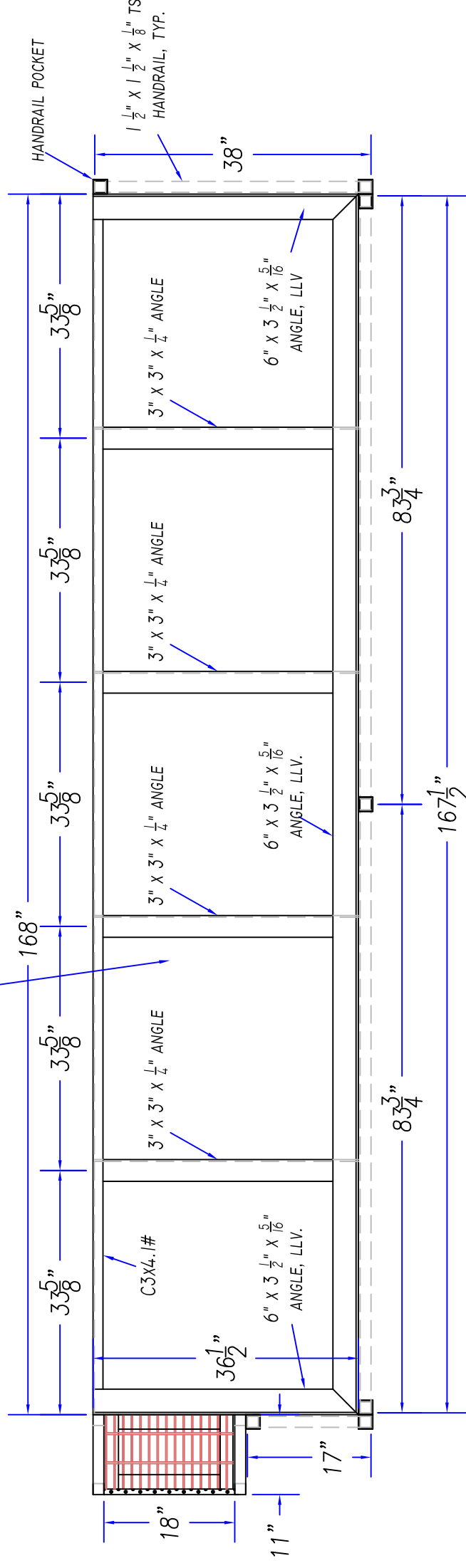
6"

2" X 2" X 3/16" TS 6" LONG FOR HANDRAIL POCKET, USE 1" X 1/2" STRAP ON BOTTOM OF POCKET TO HOLD RAIL AND ALLOW WATER TO DRAIN.

NOTES:
 WALKWAY, GRATING, HANDRAIL AND LADDER TO BE HOT DIPPED
 GALVANIZED AFTER FABRICATION.



WALKWAY DECK TO BE 1/4" X 3/16" SMOOTH
 TOP GALVANIZED BAR GRATING.



WALKWAY PLAN VIEW

GREER STEEL
 INC.

3117 107th Street S.

Lakewood, WA 98499

Phone (253)581-4100 Fax (253)581-4300

5,000 Gallon UL-2085
FIREGUARD, Dual Product, Skid Mounted
 Aboveground Storage Tank
 Mascott Equipment

DRAWN: J. LORENZ	REVISIONS:
DATE: 7/28/2015	FILE: MAS15DPFGSK5K
CHECKED: -	JOB NO: -
DATE: -	SCALE: NTS
REVISED: -	SHEET No. 8
	OF 8

These drawings represent a proprietary design of Greer Steel Inc., and may not be used for source design or procurement purposes by other than Greer Steel Inc.