

SYMBOL LEGEND

	PROPERTY BOUNDARY		ANTI-SIPHON VALVE
	CENTERLINE		BALL VALVE
	CULVERT		MOTOR ACTUATED BALL VALVE
	EDGE OF WATER		CHECK VALVE
	DITCH LINE/DRAINAGE SWALE		GATE VALVE
	DRAINAGE DIRECTION & SLOPE		PRESSURE RELIEF VALVE w/ FLOW DIRECTION
	TRAVELED WAY		SHEAR VALVE
	FILL SLOPE		PRESSURE TEST TAP
	CUT SLOPE		METER
	FENCE LINE		FILTER
	FIRE EXTINGUISHER		FLEXIBLE CONNECTOR
	GROUND ELEVATION CONTOURS		WYE STRAINER (MESH SIZE)
	BOLLARD		FILL LIMITER
	POWER POLE		QUICK COUPLING
	INFORMATION / WARNING SIGN		SUBMERSIBLE PUMP
	SHEET NOTE		VERTICAL PIPE TRANSITION
	SURVEY MONUMENT		REDUCER
	TEST PIT		LEVEL FLOAT SWITCH
	FINISH GRADE ELEVATION		HOSE REEL
	DIAMETER		

NOTES

1. SYSTEM REPRESENTATIONS ON THIS SHEET ARE SCHEMATIC. SEE TANK PROCUREMENT SPECIFICATIONS AND TANK DETAIL SHEETS FOR MORE SPECIFIC INFORMATION.
2. NOT ALL TANK APPURTENANCES ARE SHOWN ON THIS SHEET. SEE TANK DETAIL SHEETS AND SHOP DRAINGS FOR ADDITIONAL INFORMATION.
3. THIS SHEET SHOWS THE DESIRED FUNCTIONALITY AND GENERAL LAYOUT OF THE PROPOSED SYSTEMS. THE INTENT IS NOT TO SHOW EVERY REQUIRED COMPONENT BUT TO PROVIDE THE CONTRACTOR WITH SUFFICIENT INFORMATION TO FINALIZE THE DESIGN AND PREPARE SHOP DRAWINGS FOR FINAL REVIEW AND APPROVAL PRIOR TO FABRICATION. IT IS ASSUMED THAT THE CONTRACTOR HAS IN-HOUSE DESIGNS AND TECHNIQUES FOR FABRICATING INTEGRAL TANK / DISPENSING SYSTEMS AND IT IS THE CONTRACTOR'S RESPONSIBILITY TO SUPPLEMENT THE SCHEMATIC DRAWINGS AS NECESSARY TO PROVIDE A FULLY FUNCTIONAL, CODE COMPLIANT SYSTEM.
4. CONTRACTOR IS NOT RESPONSIBLE FOR ELECTRICAL WIRING OF THE TANK/SKID MOUNTED COMPONENTS.
5. CONTRACTOR SHALL INTEGRATE REQUIRED SUPPORTS, STAND OFFS, ETC AS NECESSARY TO FACILITATE THE FIELD INSTALLATION OF ELECTRICAL CONDUIT, CONDUCTOR, AND DEVICES REQUIRED TO POWER THE SYSTEMS. FIELD INSTALLATION OF CONDUIT AND CONDUCTOR BY OTHERS.

OPERATIONAL NARRATIVE

FILLING TANK FARM FROM FUEL TRUCK:

- PRIOR TO FILLING, TURN OFF ENGINE, CHOCK WHEELS AND CONNECT STATIC GROUNDING CABLE.
- THE DISPENSING TANKS WILL BE FILLED VIA FILL POINTS LOCATED ON THE TOP OF THE TANKS.
- LINE PRESSURE WILL BE SUPPLIED BY THE FUEL TRUCK PUMPING SYSTEM.
- THE TANK FARM OPERATOR WILL MONITOR THE FILLING PROCESS VIA CLOCK GAUGES AND A GAUGING ROD AT EACH TANK.
- AT THE CONCLUSION OF FILLING, CLOSE ISOLATION VALVES AND DISCONNECT FILL HOSE.
- IF TANK LEVEL REACHES 95% FULL THE OVER FLOW PREVENTION VALVE (FLV) WILL ACTIVATE, STOPPING FLOW.
- IF TANK LEVEL REACHES 97% FULL THE HIGH LEVEL FLOAT WILL ACTIVATE AUDIBLE AND VISUAL ALARMS.

RETAIL SALES DISPENSER OPERATION:

- SELF SERVICE RETAIL SALES WILL BE AVAILABLE DURING SET BUSINESS HOURS.
- CUSTOMERS WILL INTERFACE WITH THE POINT OF SALE SYSTEM AT THE DUAL PRODUCT DISPENSER.
 - SELF SERVICE SALES WILL BE LIMITED TO CREDIT CARD PURCHASES ONLY.
 - CUSTOMERS WILL INSERT THEIR CREDIT CARDS AND FOLLOW PROMPTS ON THE DISPENSER SCREEN TO COMPLETE THE DISPENSING PROCESS.
 - IF THE TANK LEVEL FALLS BELOW 5% FULL THE LOW LEVEL WILL LOCKOUT THE SUBMERSIBLE PUMP.

HEATING FUEL HOSE REEL DISPENSER OPERATION:

- THE HOSE REEL IS INTENDED TO FACILITATE BULK TRANSFER TO THE CITY-OWNED HEATING FUEL DELIVERY VEHICLE.
- PRIOR TO FILLING, TURN OFF ENGINE, CHOCK WHEELS AND CONNECT STATIC GROUNDING CABLE.
 - OPEN ISOLATION VALVE, INPUT DESIRED FUEL VOLUME INTO METER, SET SPRING-LOADED MECHANICAL VALVE AND DEPRESS PUMP START BUTTON TO PRESSURIZE HOSE.
 - UNWIND HOSE, PLACE NOZZLE IN APPROVED FUEL CONTAINER AND DEPRESS TRIGGER TO INITIATE FLOW.
 - PROVIDE CONTINUOUS MONITORING DURING FUELING PROCESS. FLOW WILL AUTOMATICALLY STOP AT PRE-SET VOLUME, BUT PUMP WILL CONTINUE TO RUN.
 - WHEN FUELING IS COMPLETE, DEPRESS PUMP STOP BUTTON, WIND HOSE ONTO REEL, HANG UP NOZZLE, AND NOTE VOLUME OF FUEL DISPENSED.

NO.	REVISION	BY	DATE

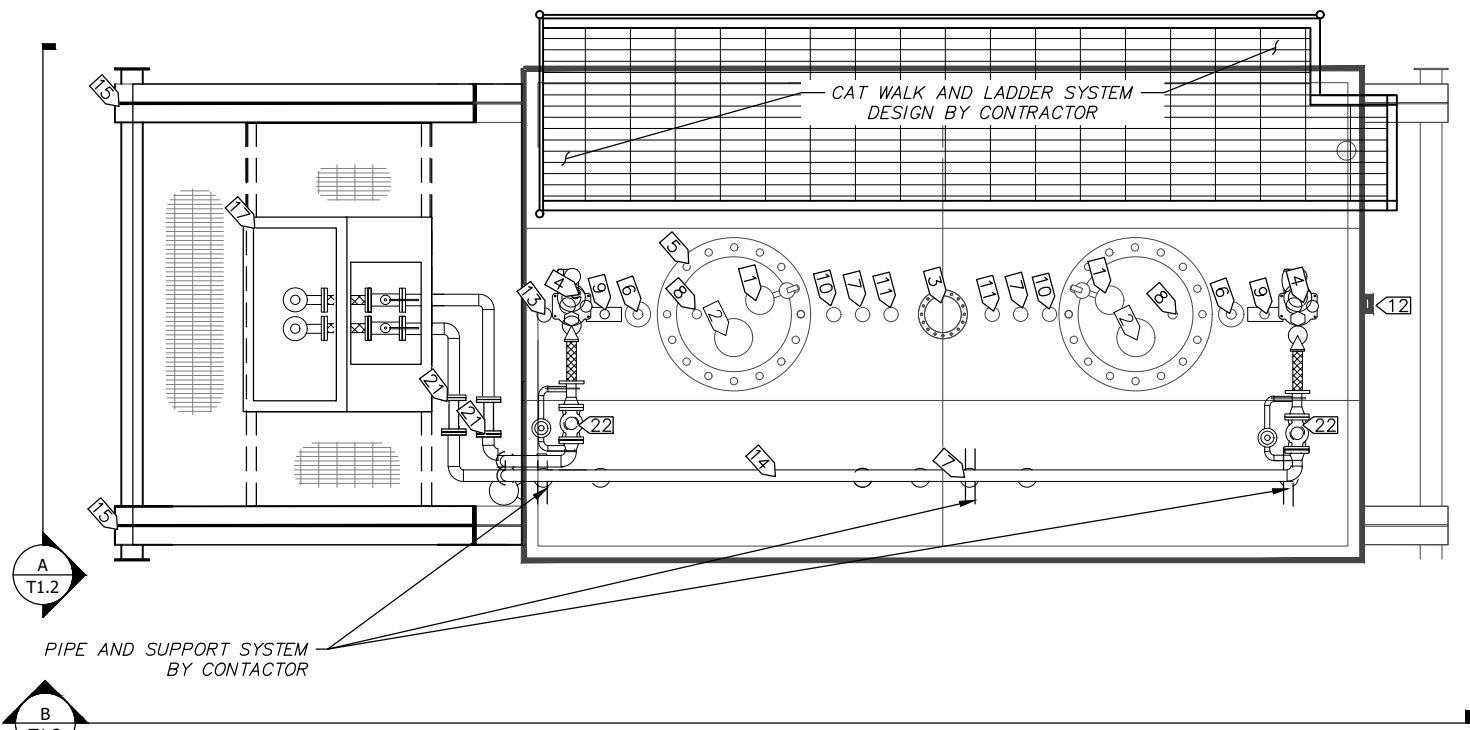
Plot Date	5/28/20
Designed	-
Drawn	-
Approved	-

SPECIFIC NOTES:

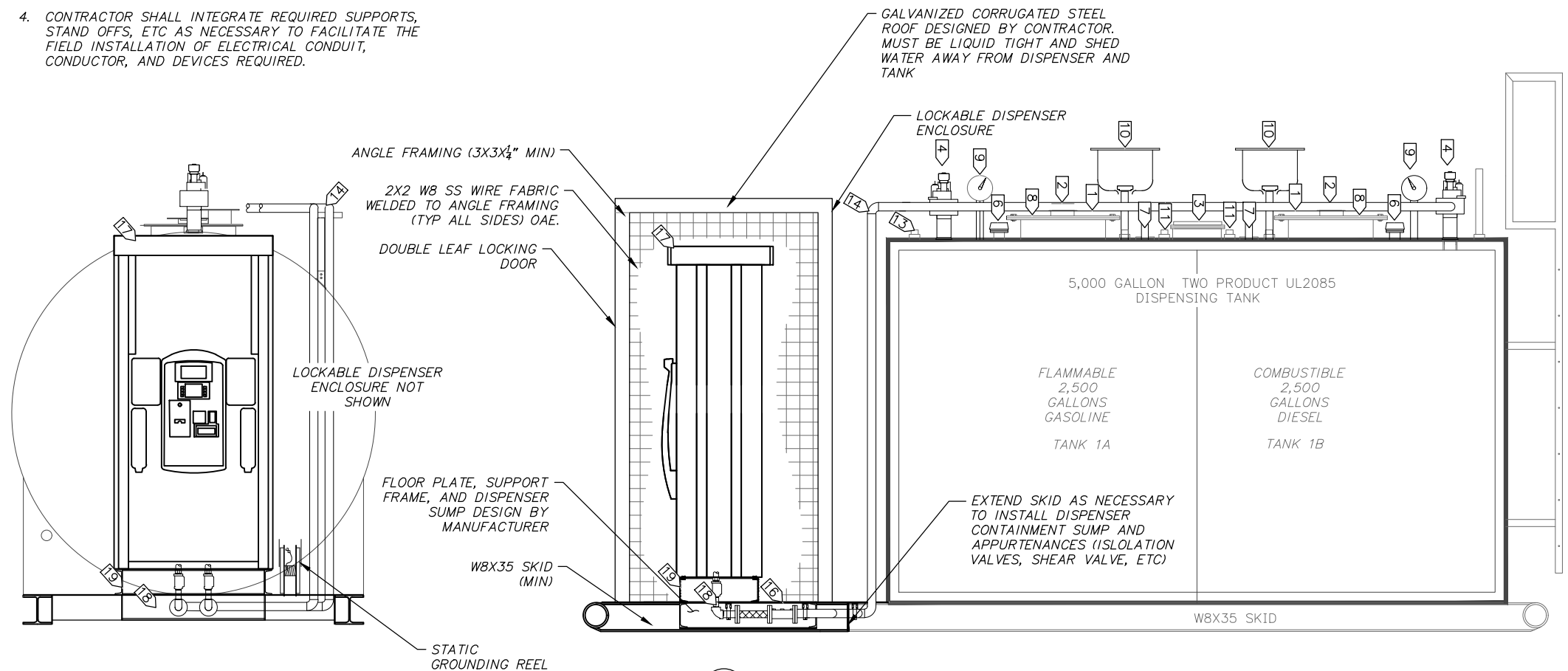
- 1 3" FPT - PRESSURE VACUUM VENT W/ WHISTLE ALARM
- 2 6" FLANGED - PRIMARY E-VENT
- 3 8" FLANGED - SECONDARY E-VENT
- 4 4" FPT - SUBMERSIBLE PUMP
- 5 24" MANHOLE
- 6 3" FLANGED - FLOATS (BY OTHERS)
- 7 2" FPT - WATER DRAW
- 8 2" FPT - SPARE
- 9 2" FPT - CLOCK GAUGE
- 10 4" FPT - 6 GALLON FILL BUCKET W/ FILL LIMITER AND DROP TUBE
- 11 4" FPT - SPARE
- 12 (NOT USED)
- 13 2" FPT - GAUGE HATCH
- 14 2" SCHEDULE 80 STEEL PIPING
- 15 SKID EXTENSIONS
- 16 DISPENSER FLOOR PLATE
- 17 DUAL PRODUCT DISPENSER
- 18 DISPENSER CONNECTIVE PIPING
- 19 CONTAINMENT SUMP
- 20 PIPE SUPPORT (NOT USED)
- 21 2" STRAINER
- 22 2" BALL VALVE WITH 1" PRV

NOTES:

1. ALL COMPONENTS ON THIS SHEET ARE CONTRACTOR PROVIDED UNLESS NOTED OTHERWISE.
2. THIS SHEET SHOWS THE DESIRED FUNCTIONALITY AND GENERAL LAYOUT OF THE PROPOSED SYSTEMS. THE INTENT IS NOT TO SHOW EVERY REQUIRED COMPONENT BUT TO PROVIDE THE CONTRACTOR WITH SUFFICIENT INFORMATION TO FINALIZE THE DESIGN AND PREPARE SHOP DRAWINGS FOR FINAL REVIEW AND APPROVAL PRIOR TO FABRICATION. IT IS ASSUMED THAT THE CONTRACTOR HAS IN-HOUSE DESIGNS AND TECHNIQUES FOR FABRICATING INTEGRAL TANK / DISPENSING SYSTEMS AND IT IS THE CONTRACTOR'S RESPONSIBILITY TO SUPPLEMENT THE SCHEMATIC DRAWINGS AS NECESSARY TO PROVIDE A FULLY FUNCTIONAL, CODE COMPLIANT SYSTEM.
3. CONTRACTOR IS NOT RESPONSIBLE FOR ELECTRICAL WIRING OF THE TANK/SKID MOUNTED COMPONENTS.
4. CONTRACTOR SHALL INTEGRATE REQUIRED SUPPORTS, STAND OFFS, ETC AS NECESSARY TO FACILITATE THE FIELD INSTALLATION OF ELECTRICAL CONDUIT, CONDUCTOR, AND DEVICES REQUIRED.



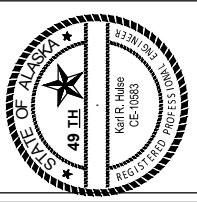
1 PLAN - 5,000 GALLON DOUBLE WALL PROTECTED TANK
SCALE: NTS



A END VIEW
SCALE: NTS

B SECTION - 5,000 GALLON DOUBLE WALL PROTECTED TANK
SCALE: NTS

File: J:\JobsData\30411.00 Kasaaan BFU CM\00 CADD\01 Working Set\01 Civil\Procurement\30411.00 KasaaanTank Details.dwg

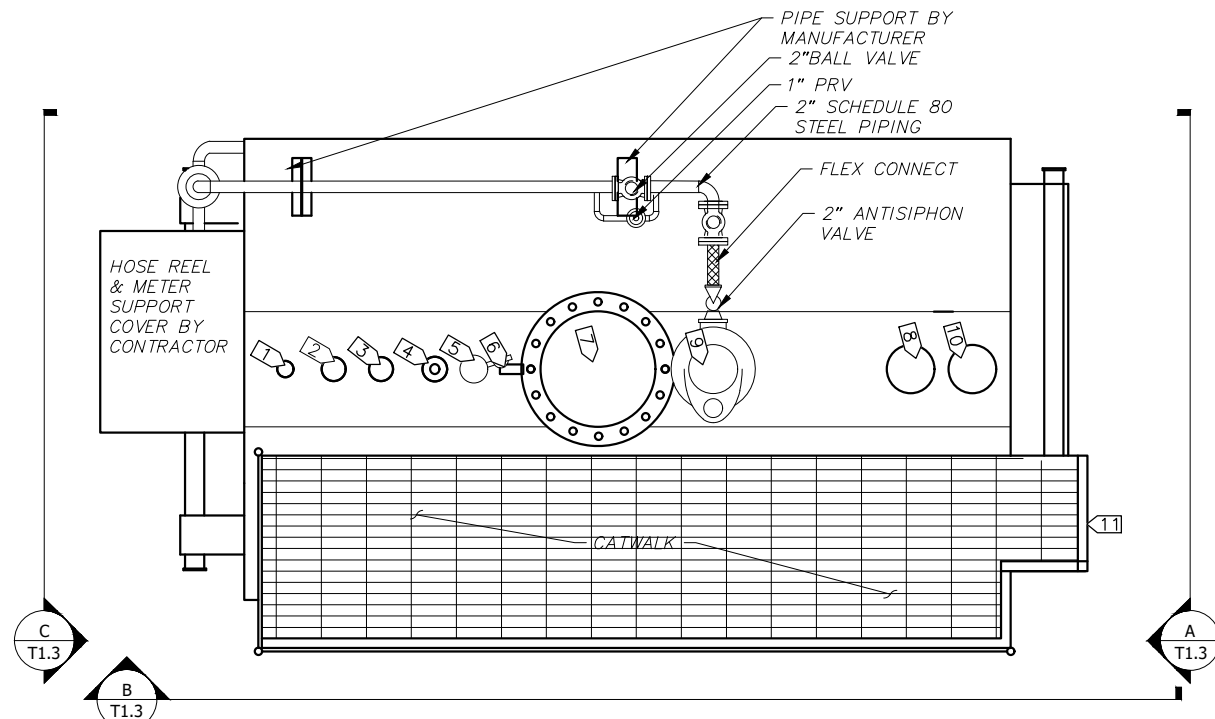


KASAAAN, ALASKA
TANK PROCUREMENTS DRAWINGS
KASAAAN 5,000 GALLON TANK DETAILS

NO.	REVISION	BY	DATE

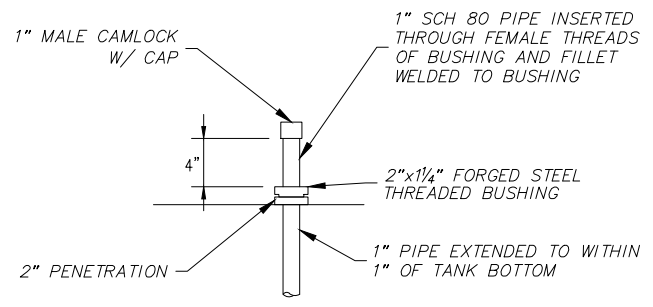
Plot Date	5/29/20	Designed	-	Drawn	-	Approved	-
-----------	---------	----------	---	-------	---	----------	---

Sheet No. **T1.2**



PLAN - 3,000 GALLON DOUBLE WALL PROTECTED TANK

SCALE: NTS



WATER DRAW DETAIL

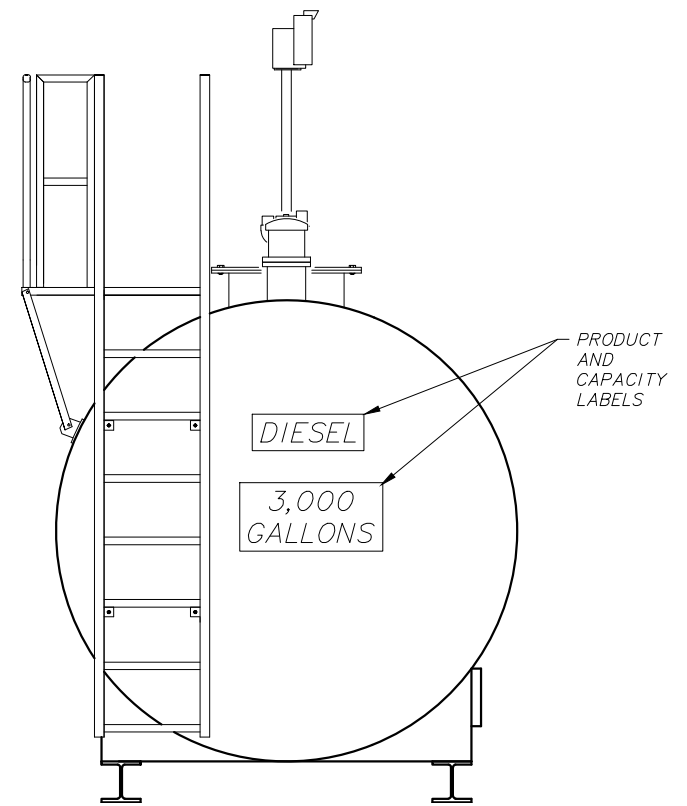
SCALE: NTS

NOTES

1. ALL COMPONENTS ON THIS SHEET ARE CONTRACTOR PROVIDED UNLESS NOTED OTHERWISE.
2. THIS SHEET SHOWS THE DESIRED FUNCTIONALITY AND GENERAL LAYOUT OF THE PROPOSED SYSTEMS. THE INTENT IS NOT TO SHOW EVERY REQUIRED COMPONENT BUT TO PROVIDE THE CONTRACTOR WITH SUFFICIENT INFORMATION TO FINALIZE THE DESIGN AND PREPARE SHOP DRAWINGS FOR FINAL REVIEW AND APPROVAL PRIOR TO FABRICATION. IT IS ASSUMED THAT THE CONTRACTOR HAS IN-HOUSE DESIGNS AND TECHNIQUES FOR FABRICATING INTEGRAL TANK / DISPENSING SYSTEMS AND IT IS THE CONTRACTOR'S RESPONSIBILITY TO SUPPLEMENT THE SCHEMATIC DRAWINGS AS NECESSARY TO PROVIDE A FULLY FUNCTIONAL, CODE COMPLIANT SYSTEM.
3. CONTRACTOR IS NOT RESPONSIBLE FOR ELECTRICAL WIRING OF THE TANK/SKID MOUNTED COMPONENTS.
4. CONTRACTOR SHALL INTEGRATE REQUIRED SUPPORTS, STAND OFFS, ETC AS NECESSARY TO FACILITATE THE FIELD INSTALLATION OF ELECTRICAL CONDUIT, CONDUCTOR, AND DEVICES REQUIRED TO POWER THE SYSTEMS. FIELD INSTALLATION OF CONDUIT AND CONDUCTOR BY OTHERS.

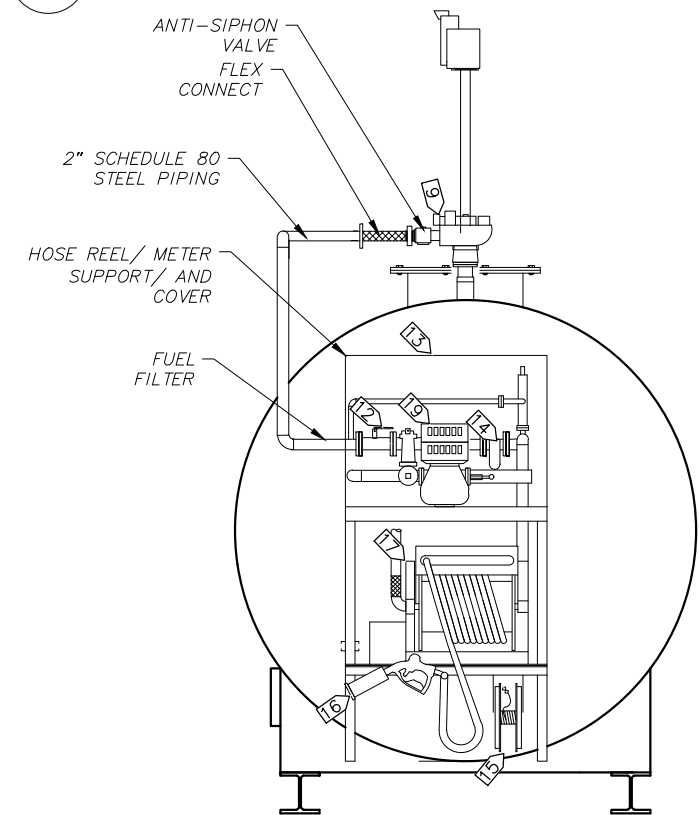
SPECIFIC NOTES:

- 1 2" FPT - GAUGE HATCH INSTALLED ON 2"x4" NIPPLE (SECONDARY TANK MONITOR)
- 2 3" FLANGED - FLOATS (BY OTHERS)
- 3 4" FPT - FILL
- 4 2" FPT - WATER DRAW (2/T1.3)
- 5 3" FPT - PRESSURE VACUUM VENT W/ WHISTLE ALARM
- 6 2" FPT - CLOCK GAUGE AND STILLING WELL
- 7 24" MANHOLE
- 8 8" FLANGED - EMERGENCY VENT
- 9 4" FPT - SUBMERSIBLE PUMP
- 10 8" FLANGED - SECONDARY EMERGENCY VENT
- 11 SHOP FABRICATED BOLT ON LADDER AND CATWALK ASSEMBLY
- 12 2" BALL VALVE
- 13 HOSE REEL SUPPORT SYSTEM
- 14 FILTER
- 15 STATIC GROUNDING REEL (BOND TO GROUND SYSTEM)
- 16 NOZZLE RETENTION/HANG UP ASSEMBLY
- 17 HOSE REEL
- 18 6 GALLON FILL BUCKET W/ FILL LIMITER AND DROP TUBE
- 19 METER



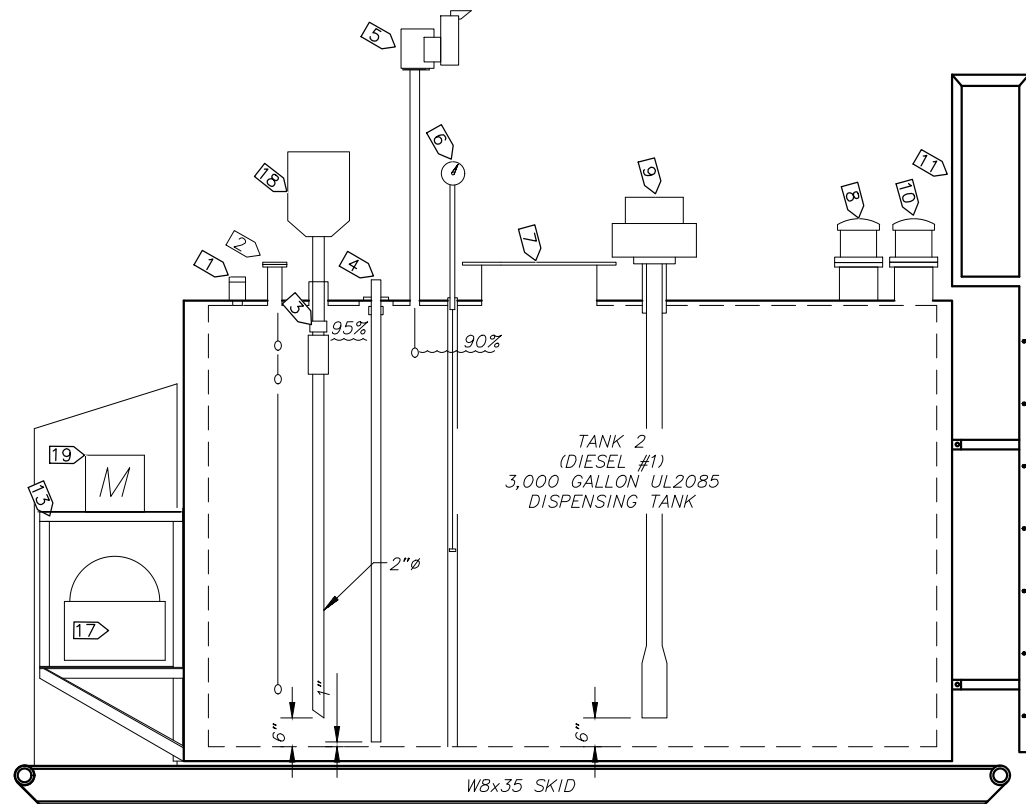
SECTION - 3,000 GALLON DOUBLE WALL PROTECTED TANK

SCALE: NTS



SECTION - 3,000 GALLON DOUBLE WALL PROTECTED TANK

SCALE: NTS



SECTION - 3,000 GALLON DOUBLE WALL PROTECTED TANK

SCALE: NTS

NO.	REVISION	BY	DATE

Plot Date	5/28/20
Designed	-
Drawn	-
Approved	-