

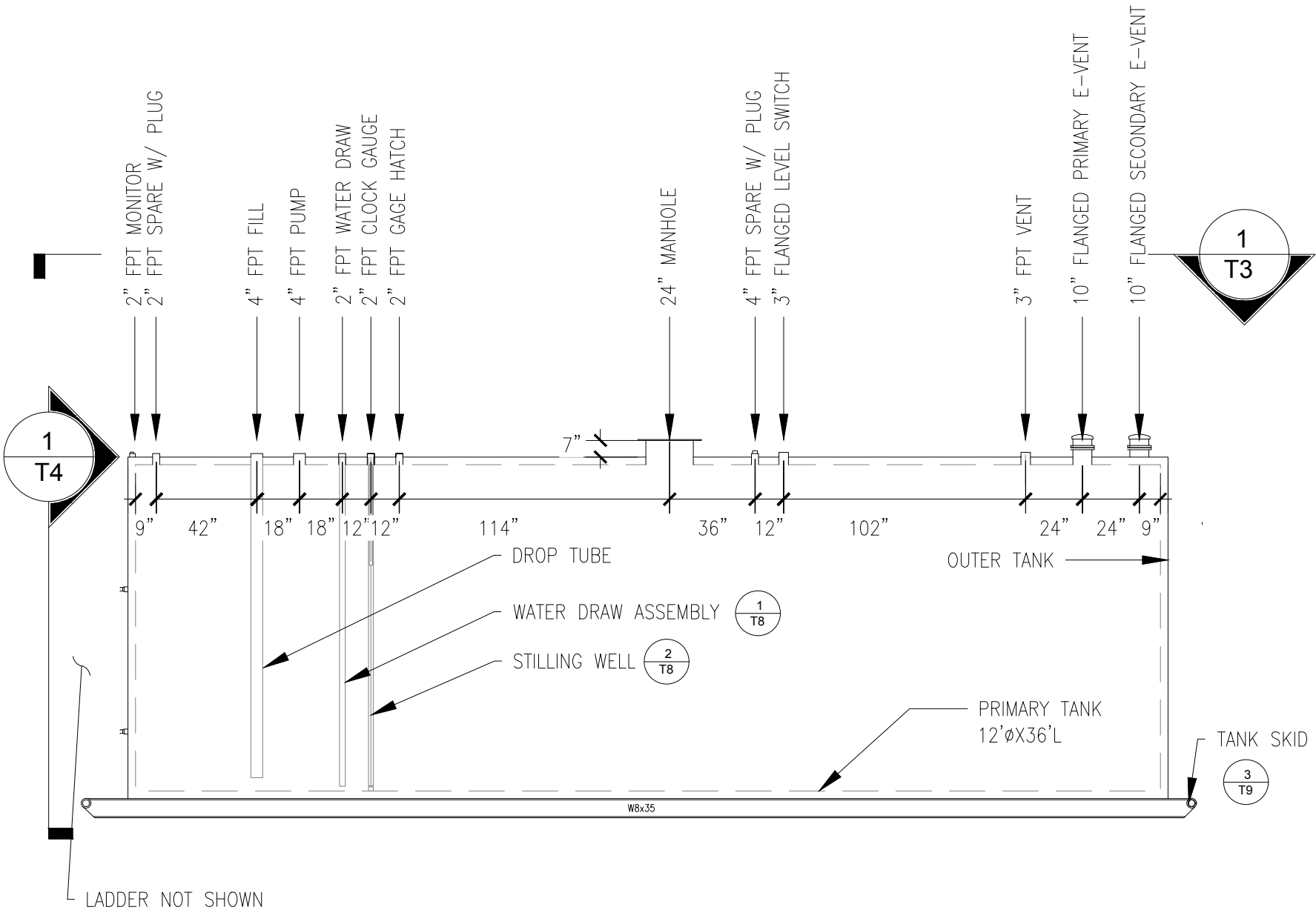




GENERAL CONSTRUCTION NOTES:

1. DESIGN AND CONSTRUCTION PER UL 142 AND UL 2085.
2. DESIGN AND TEMPERATURE OF -50 DEG. F TO +120 DEG F.
3. ALL MATERIALS ARE COMPATIBLE WITH UNLEADED GASOLINE AND DIESEL FUEL.
4. INSTALL STANDARD UL LABELS AND MANUFACTURER'S LABELS AS REQUIRED.
5. TANK SHELL MATERIAL -1/4" THICK A36.
6. TANK HEAD MATERIAL - 5/16" THICK A36.
7. PIPE MATERIAL - A106.
8. FLANGE MATERIAL - A105.
9. ALL OTHER PLATING AND SECTION MATERIAL - R36.
10. BLAST ALL EXTERIOR SURFACES TO SSPC-SP10 SPECIFICATIONS.
11. CLEAN AND SWEEP ALL INTERIOR SURFACES POST FABRICATION.
12. ALL GALVANIZED SURFACES ARE LEFT INTACT AND ARE NOT COATED.
13. ALL OTHER EXTERIOR SURFACES ARE COATED IN ACCORDANCE WITH THE SPECIFICATIONS
14. DIMENSIONS MAY VARY DUE TO MANUFACTURING TOLERANCES.
15. ALL TANK SEAMS ARE DOUBLE SIDE WELDED BUTT JOINTS OR FULL PENETRATION WELDS.
16. SHELL JOINTS - REFERENCE UL-142 FIG 6.1 NO. 1.
17. HEAD TO SHELL JOINTS - REFERENCE UL-142, FIG 6.2 NO.2.
18. VENDOR TO PROVIDE ALL WELDING DETAILS IN SUBMITTALS.

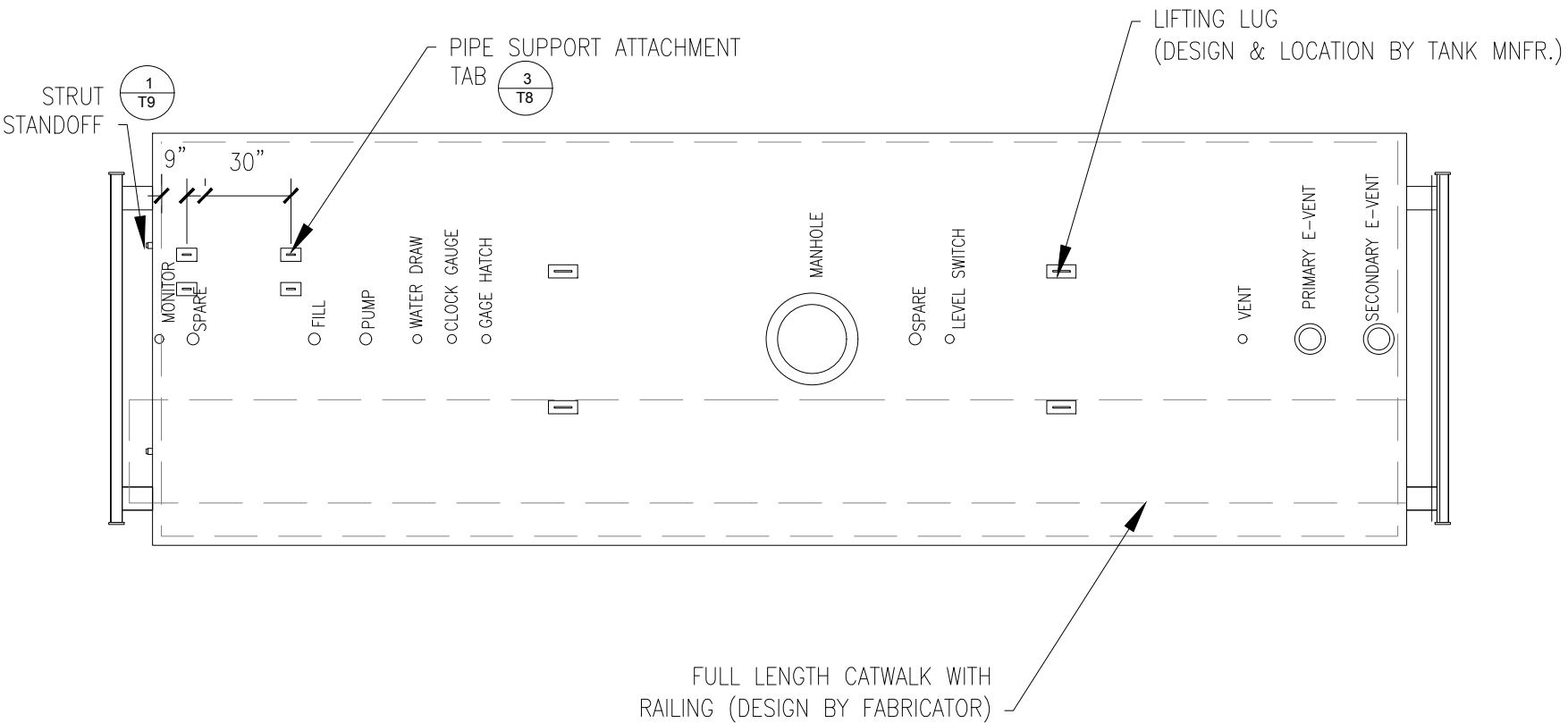
PROJECT: NUNAPITCHUCK BFU PROJECT TANK PROCUREMENT DRAWINGS	DRAWN BY: NCP DESIGNED BY: KRH	SCALE: NO SCALE DATE: 2/10/21	 <p>State of Alaska Department of Community and Economic Development AIDEA/AEA Rural Energy Group 813 West Northern Lights Blvd. Anchorage, Alaska 99503</p> 
FILE NAME	SHEET T 1	OF	TITLE: GENERAL NOTES



1 **30,000 GALLON DOUBLE WALL TANK - ELEVATION VIEW**

PROJECT: NUNAPITCHUCK BFU PROJECT TANK PROCUREMENT DRAWINGS	DRAWN BY: NCP	SCALE: NO SCALE	 State of Alaska Department of Community and Economic Development AIDEA/AEA Rural Energy Group 813 West Northern Lights Blvd. Anchorage, Alaska 99503 
	DESIGNED BY: KRH	DATE: 2/9/21	
TITLE: 30,000 GALLON DOUBLE WALL TANK	FILE NAME	SHEET T2	OF

ITB No. _____



1 **30,000 GALLON DOUBLE WALL TANK - PLAN VIEW**

PROJECT: NUNAPITCHUCK BFU PROJECT TANK PROCUREMENT DRAWINGS		DRAWN BY: NCP	SCALE: NO SCALE	
TITLE: 30,000 GALLON DOUBLE WALL TANK		DESIGNED BY: KRH	DATE: 2/9/21	
		FILE NAME	SHEET T3 OF	
		State of Alaska Department of Community and Economic Development AIDEA/AEA Rural Energy Group 813 West Northern Lights Blvd. Anchorage, Alaska 99503 		

PROJECT: **NUNAPITCHUCK BFU PROJECT
TANK PROCUREMENT DRAWINGS**

TITLE: **30,000 GALLON DOUBLE WALL TANK**

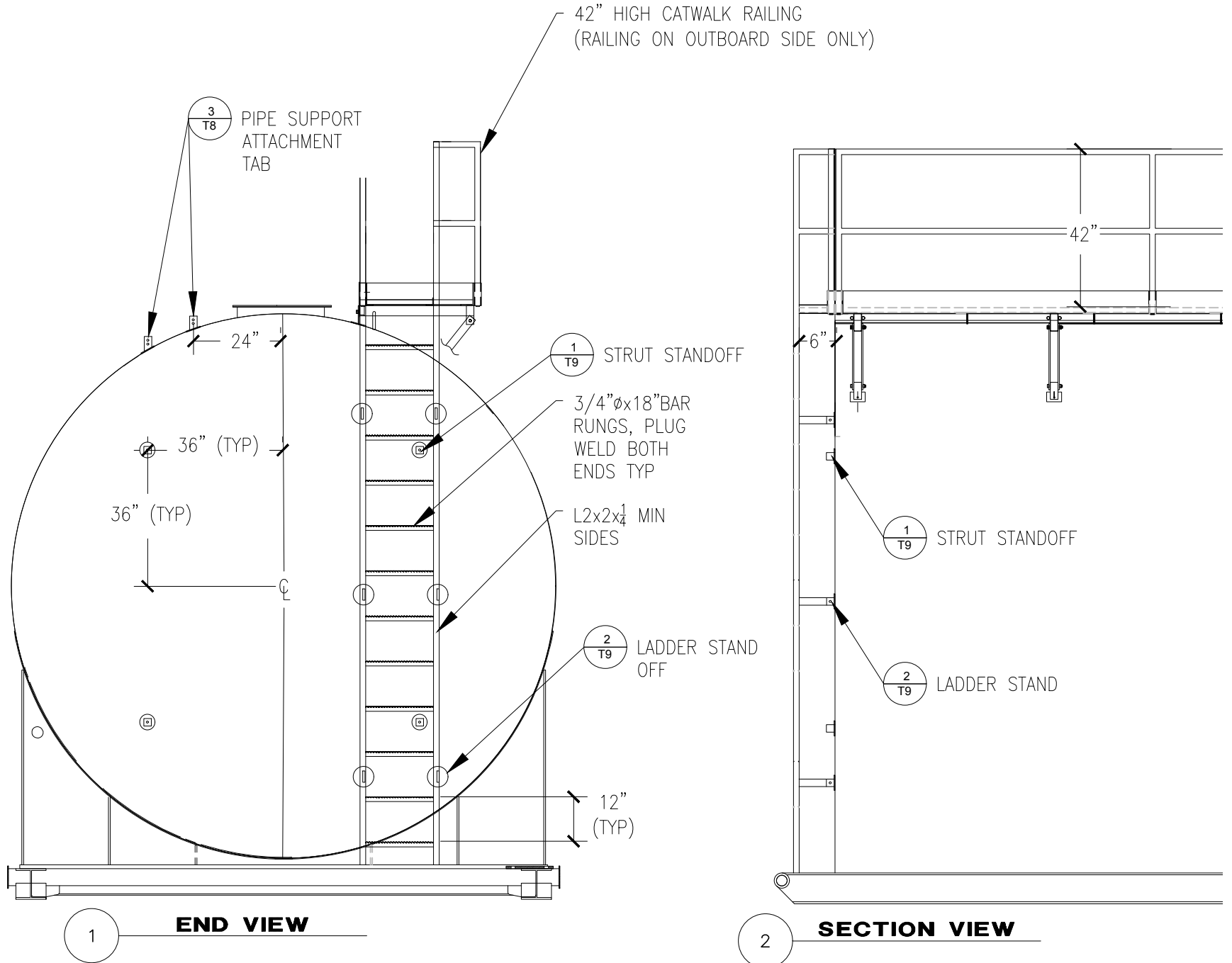
DESIGNED BY: KRH
DRAWN BY: NCP
FILE NAME: _____

DATE: 2/9/21
SCALE: NO SCALE

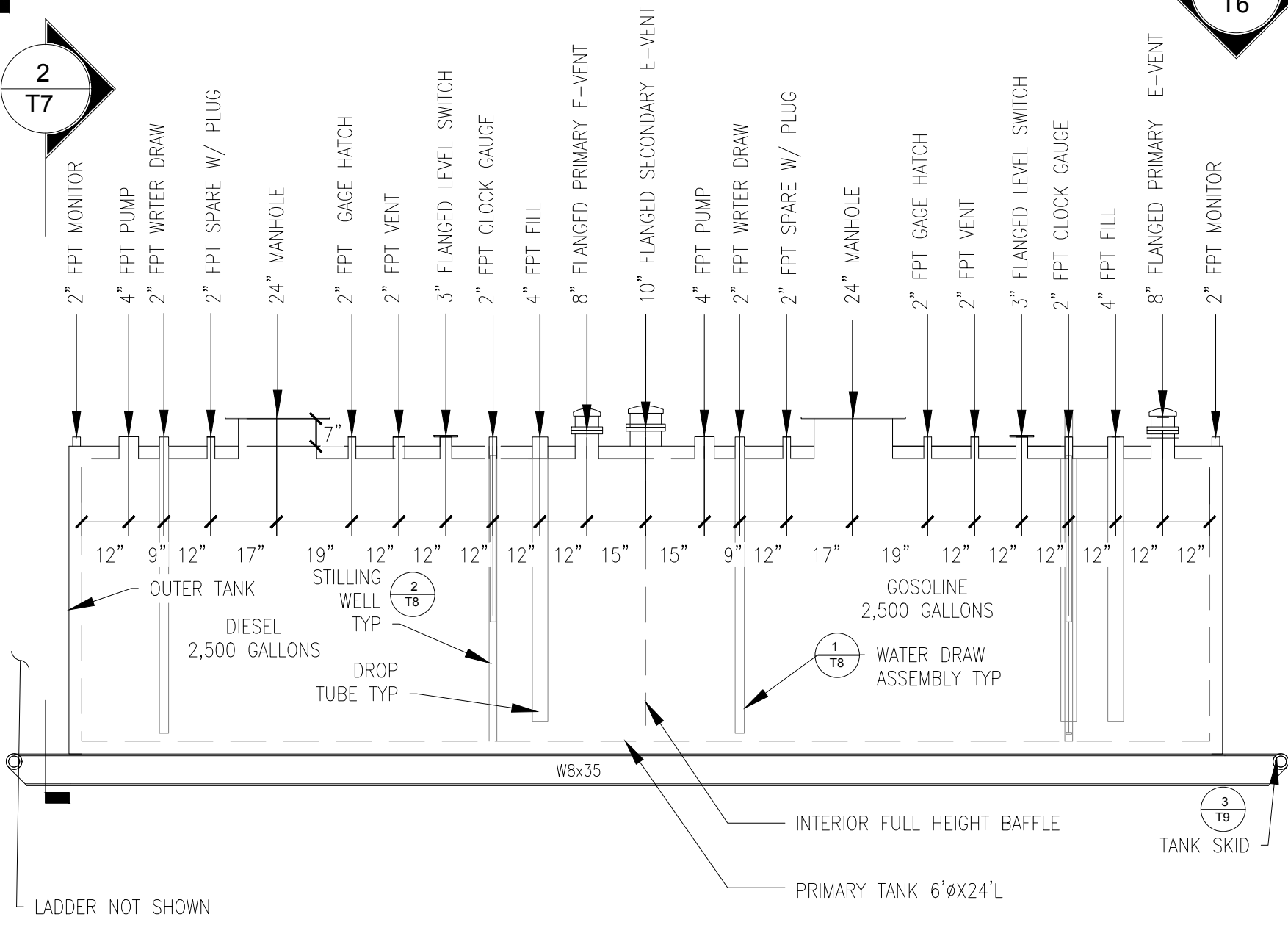
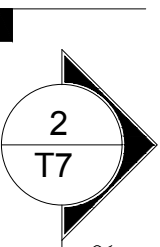
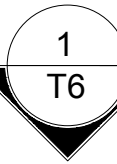
T4 SHEET OF

State of Alaska
Department of Community and Economic Development
ALASKA
Rural Energy Group
813 West Northern Lights Blvd.
Anchorage, Alaska 99503

ALASKA
ENERGY AUTHORITY



ITB No. _____

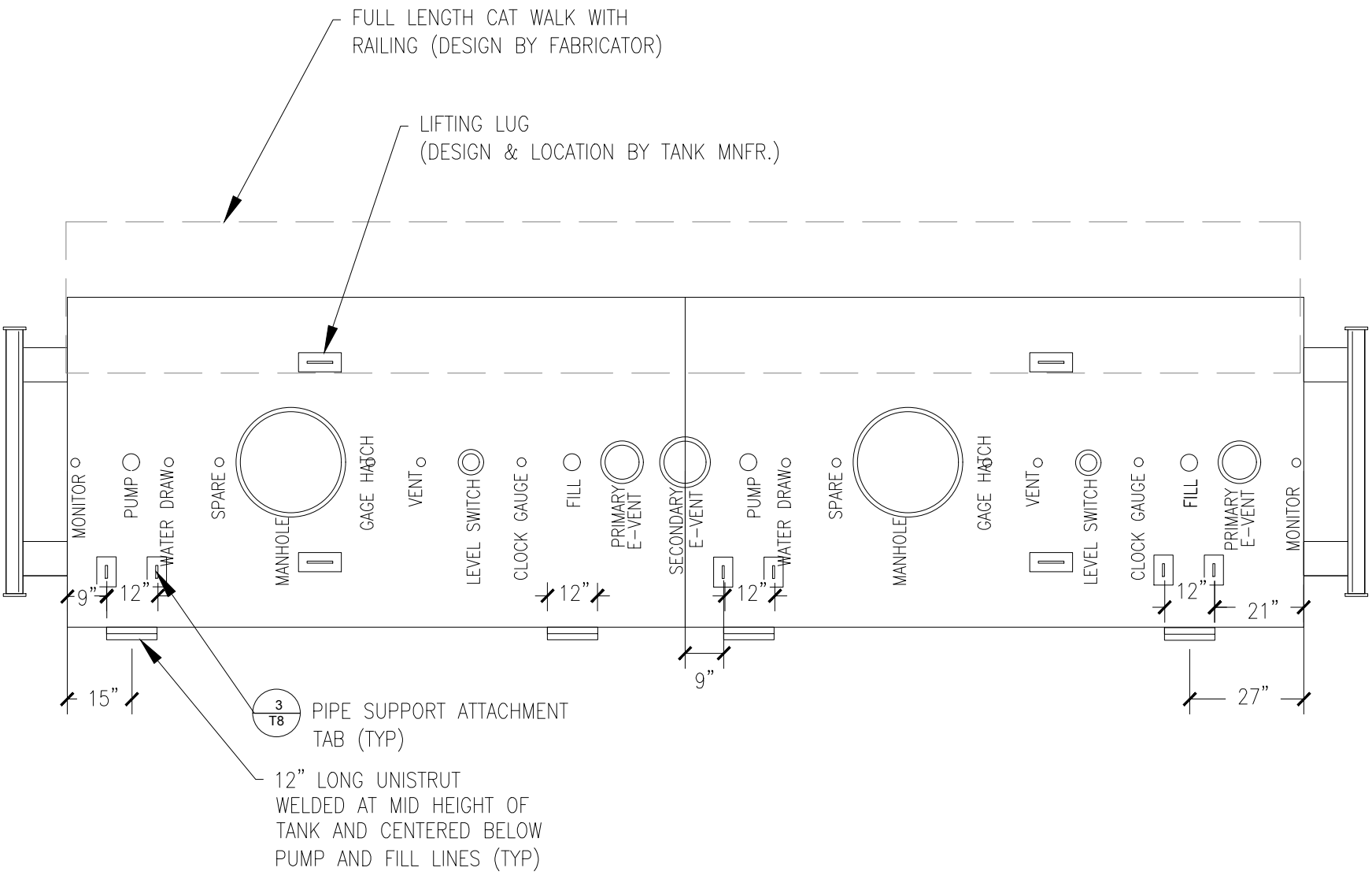


5,000 GALLON DUAL PRODUCT PROTECTED DISPENSING TANK - ELEVATION VIEW

TITLE: DUAL PRODUCT DISPENSING TANK	PROJECT: NUNAPITCHUCK BFU PROJECT TANK PROCUREMENT DRAWINGS	SCALE: NO SCALE	SHEET 15 OF
	DESIGNED BY: KRH	DATE: 2/9/21	
DRAWN BY: NCP	FILE NAME	STATE OF ALASKA Department of Community and Economic Development Rural Energy Group 813 West Northern Lights Blvd. Anchorage, Alaska 99503	

ITB No. _____





FULL LENGTH CAT WALK WITH RAILING (DESIGN BY FABRICATOR)

LIFTING LUG (DESIGN & LOCATION BY TANK MNFR.)



PIPE SUPPORT ATTACHMENT TAB (TYP)

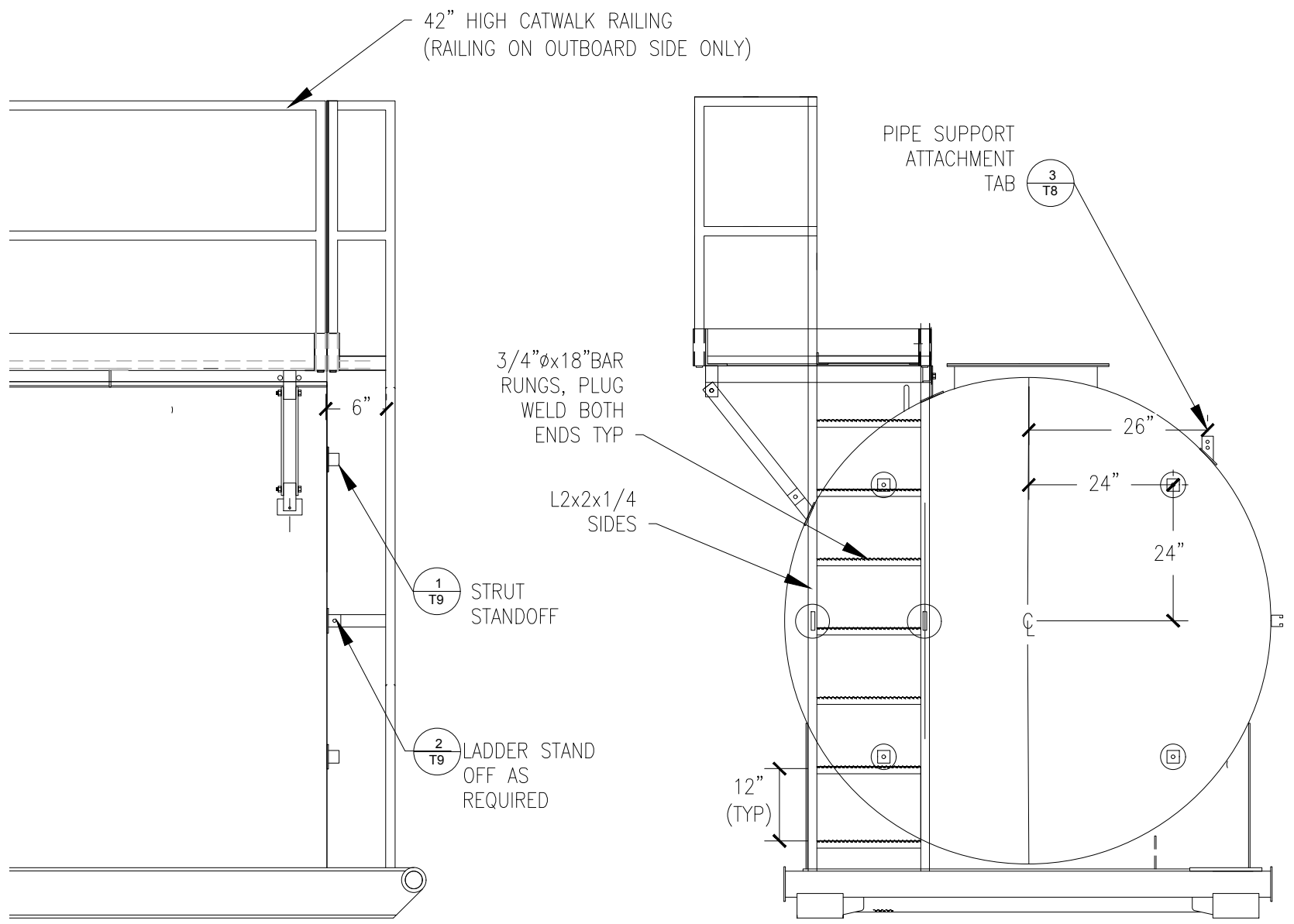
12" LONG UNISTRUT WELDED AT MID HEIGHT OF TANK AND CENTERED BELOW PUMP AND FILL LINES (TYP)

5,000 GALLON DUAL PRODUCT PROTECTED DISPENSING TANK - PLAN VIEW

1

PROJECT: NUNAPITCHUCK BFU PROJECT TANK PROCUREMENT DRAWINGS	DRAWN BY: NCP	SCALE: NO SCALE	<p>State of Alaska Department of Community and Economic Development AIDEA/AEA Rural Energy Group 813 West Northern Lights Blvd. Anchorage, Alaska 99503</p>
	DESIGNED BY: KRH	DATE: 2/9/21	
TITLE: DUAL PRODUCT DISPENSING TANK	FILE NAME	SHEET 16	OF

TITLE: DUAL PRODUCT DISPENSING TANK	PROJECT: NUNAPITCHUCK BFU PROJECT TANK PROCUREMENT DRAWINGS	DESIGNED BY: KRH	SCALE: NO SCALE
	FILE NAME	DATE: 2/9/21	SHEET 7 OF
 State of Alaska Department of Community and Economic Development AIDEA/AEA Rural Energy Group 813 West Northern Lights Blvd. Anchorage, Alaska 99503 			



1 SECTION VIEW

2 END VIEW

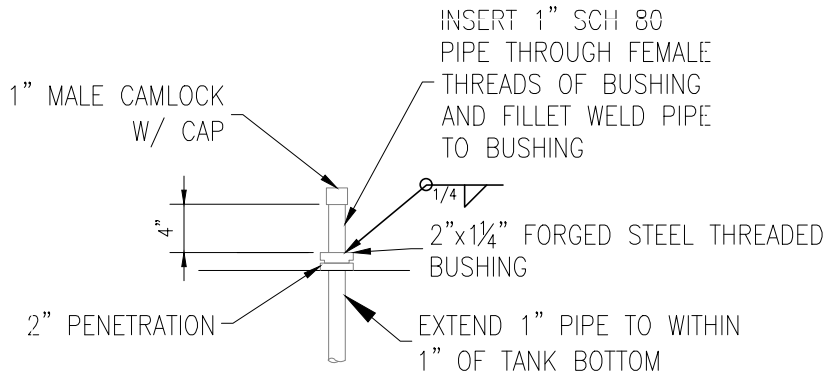
ITB No. _____

PROJECT: NUNAPITCHUCK BFU PROJECT
 TANK PROCUREMENT DRAWINGS
 TITLE: MISCELLANEOUS TANK DETAILS

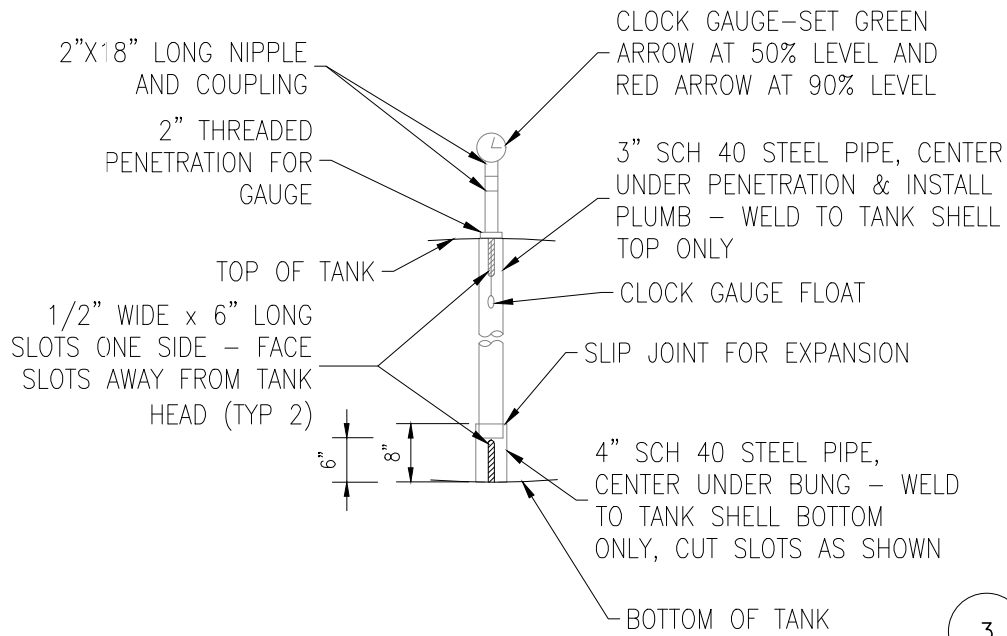
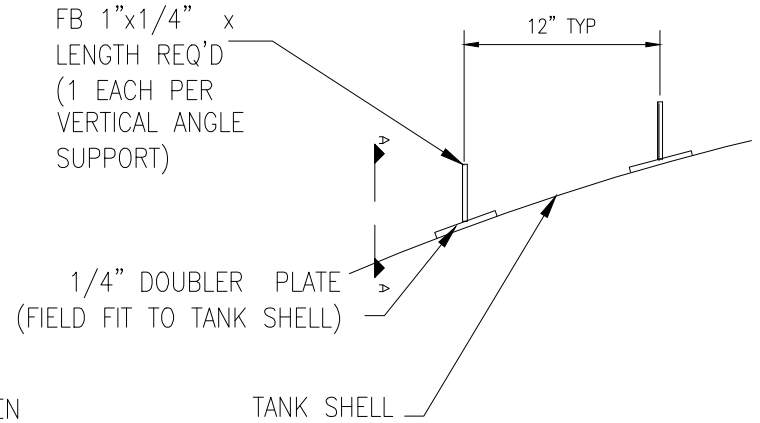
DRAWN BY: NCP
 DESIGNED BY: KRH
 FILE NAME

SCALE: NO SCALE
 DATE: 2/9/21
 SHEET 18 OF

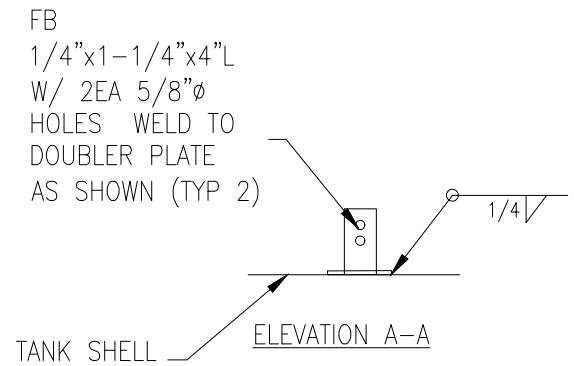
State of Alaska
 Department of Community and Economic Development
 AIDEA/AEA
 Rural Energy Group
 813 West Northern Lights Blvd.
 Anchorage, Alaska 99503
 ENERGY AUTHORITY



1 TYP WATER DRAW



2 GAUGE FLOAT STILLING WELL



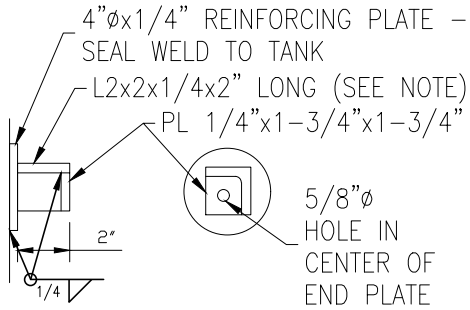
3 PIPE SUPPORT ATTACHMENT TAB

PROJECT: NUNAPITCHUCK BFU PROJECT
 TANK PROCUREMENT DRAWINGS
 TITLE: MISCELLANEOUS TANK DETAILS

DESIGNED BY: KRH
 FILE NAME

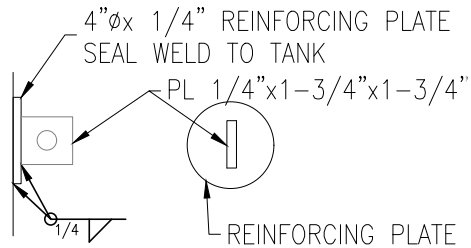
SCALE: NO SCALE
 DATE: 2/9/21
 SHEET 19 OF

State of Alaska
 Department of Community and Economic Development
 AIDEA/AEA
 Rural Energy Group
 813 West Northern Lights Blvd.
 Anchorage, Alaska 99503
 ALASKA ENERGY AUTHORITY



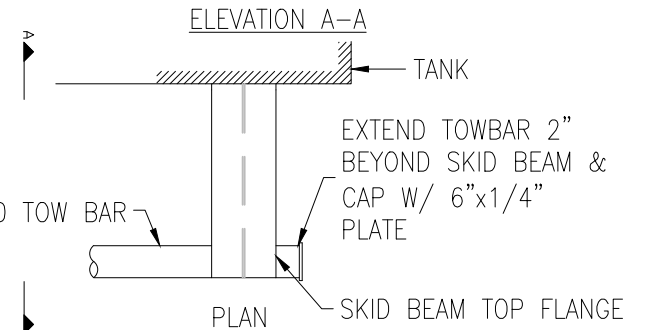
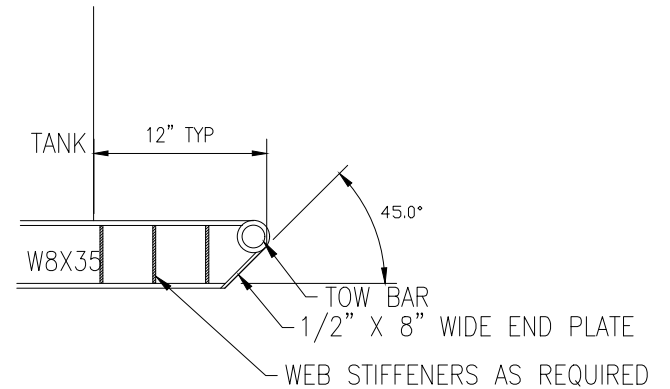
NOTE TO TANK MANUFACTURER:
 THE END PLATES OF STAND OFFS SHALL BE ON THE SAME VERTICAL PLANE.
 ANGLE LENGTHS MAY BE MODIFIED ±1 INCH TO ACCOUNT FOR CURVATURE OF THE TANK END.

1 STRUT STAND OFF



NOTE TO TANK MANUFACTURER:
 THE ENDS OF LADDER STAND OFFS SHALL BE ON THE SAME VERTICAL PLANE. PLATE LENGTHS MAY BE MODIFIED ±1 INCH TO ACCOUNT FOR CURVATURE OF THE TANK END.

2 LADDER STAND OFF



3 END OF SKID