



**Date:** April 7, 2021

**Project:** FFY19 Diesel Emissions  
Reduction Act (DERA) Arctic  
Village and Chenega Bay Project

**Solicitation No.:** 21098

**Addendum No. One**

TO ALL PLANHOLDERS:

The enclosed addendum amends the bid documents for the above referenced Project.

Acknowledgment of this addendum is required on the Proposal Form. Failure to do so may subject the bidder to disqualification.

Sincerely,



Lois Lemus  
Contracting Officer

<b>ADDENDUM TO CONTRACT DOCUMENTS</b>	<b>Page Number</b> 1	<b>No. of Pages</b> Two
<b>Addendum No. ONE</b>	<b>Date Addendum Issued:</b> April 7, 2021	
<b>Issuing Office</b> Lois Lemus Alaska Energy Authority 813 W Northern Lights Blvd Anchorage, AK 99503 Phone: (907) 771-3909 Fax: (907) 771-3044	<b>Previous Addenda Issued</b>  NONE	
<b>Project:</b> FFY19 DERA Arctic Village and Chenega Bay Project <b>Solicitation No.:</b> 21098	<b>Date and Hour Bids Due:</b> April 13, 2021 at 2:00 p.m., prevailing Anchorage time.	

**NOTICE TO BIDDERS:**

**Bidders must acknowledge receipt of this addendum prior to the hour and date set for the bid due date by one of the following methods:**

- (a) By acknowledging receipt of this addendum on the proposal form submitted.
- (b) By email or telefacsimile which includes a reference to the project and addendum number.

The bid documents require acknowledgment individually of all addenda to the drawings and/or specifications. This is a mandatory requirement and any bid received without acknowledgment of receipt of addenda may be classified as not being a responsive bid. If, by virtue of this addendum it is desired to modify a bid already submitted, such modification may be made by email or telefacsimile provided such an email or telefacsimile makes reference to this addendum and is received prior to the opening hour and date specified above.

\*\*\*\*\*

The Bid documents for the above project are amended as follows (All other terms and conditions remain unchanged):

**CONTRACT PROVISIONS AND SPECIFICATIONS**

**Item #1 Arctic Village Drawing E3.1, under “Switchgear Modification Specific Notes.”**

Note C: Remove existing 200:5 CT’s from Gen #2 section and install new 250:5 CT’s.

Add, “If the existing current transformers are multi-ratio and they have the 250:5 and 200:5 ratios available they may be left in place with revised connections. The Contractor will be responsible to ensure the final system has the ratios indicated on the drawings.”

**Item #2 3D imaging of the interior of existing Arctic Village and Chenega Bay Power Plants,**

Arctic Village: <https://my.matterport.com/show/?m=WSsCY13GuLC>

Chenega Bay: <https://my.matterport.com/show/?m=hF6y15RRf8U>

**Item #3 Add, PDF of Arctic Village Assessment Report;** this is the existing report Arctic Village Power Plants.

**Item #4 Add, PDF of Chenega Bay Assessment Report;** this is the existing report for Chenega Bay.

## QUESTIONS AND ANSWERS

**Question:** Is there housing in the Communities?

**Answer:**

- Arctic Village potential housing may be at the schools fully furnished two-bedroom apartment. Mr. Mark Green (School Superintendent) at 1-907-371-9875 for cost. (may be \$100 a night per person. Contractor to verify availability and confirm pricing. Other housing arrangements may be necessary if the project goes into the school year.

Contact Chief Robert Sam at 1-907-371-8700 if other housing arrangements need to be located.

- Arctic Village COVID-19 Protocol: Those who are vaccinated and have a negative test, prior to arriving in the community must stay away from the citizens of Arctic Village of one (1) week. (the worker can go from housing to the work site) After the one (1) week away from the citizens, the worker must take another COVID-19 test, at the local clinic. If Negative the workers are free to move about the entire community.
- Chenega Bay will have other projects going on during the DERA project. Two people may stay at the Corporation condominium for \$150 a night per person. If more than two workers, other arrangements will need to be made. If a contractor has a boat, with living accommodations Chenega will allow the boat to be docked in the Harbor. Contact Buell Russell, the General Manager at 1-907-569-5688 with housing questions.
- Chenega Bay COVID-19 Protocols: The Contractors for the DERA project are considered “Essential Workers.” The community requires a negative COVID test prior to entering the community. Workers remaining in the community more than five days are required have a negative test result at the local clinic. (After the initial five days).
- The community of Chenega Bay DOES NOT have a barge. There is a non-profit, which has a landing craft, but may not be used for any Projects. Chenega recommends contacting Dossier Services in Whittier for Barging estimates.

The proceeding information about living Housing arrangements, Barging and COVID-19 must be verified, by the contractor. AEA will not be held responsible/liable if the circumstances, requirements, and cost are different than what is presented in this document.

**END OF ADDENDUM**

# AEA Powerhouse Assessment

Submitted by: GSE-Graystassel

Submitted time: Oct 18, 2020, 3:28:51 PM

## Powerhouse Assessment General Information

Community

**Arctic Village**

Evaluator Name

**Steve Stassel**

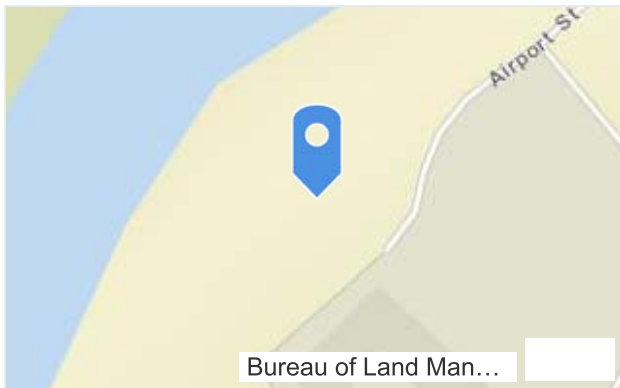
Utility

**Arctic Village Electric**

Powerhouse Building

Location of Powerhouse

**Lat: 68.12118 Lon: -145.56979**



Front of Powerhouse Photo



biaimgit-20201016-180851.jpg

Left Side of Powerhouse Photo



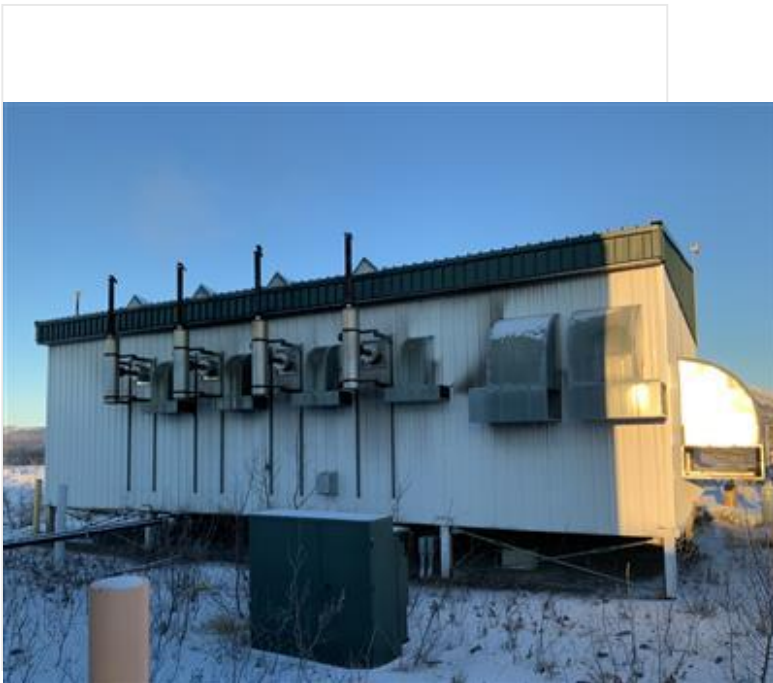
biaimgit-20201016-180930.jpg

Right Side of Powerhouse Photo



bidimgrgt-20201016-181109.jpg

Back of Powerhouse Photo



bidimgbck-20201016-181001.jpg

Building Type

**Engineered Bldg**

Foundation Type

**Post and pad with thermosiphons**

Floor Type

**Concrete**

Wall Type

**FRP**

Roof Type

**Metal**

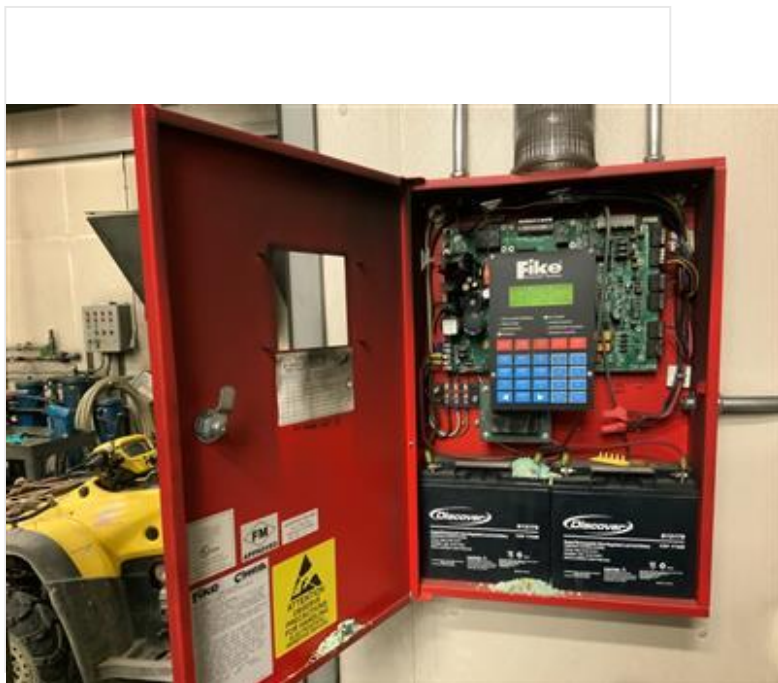
Fire Protection System

**Yes**

Fire Protection System Photo Description

**File cheetah model 10-052**

Fire Protection System Photo



blatrp sim-20201016-181740.jpg

Station Service Transformer Interior

Size in kVA

**30 kva**

Primary Voltage

**480**

Secondary Voltage

**120/208**

Phase

**3**

Station Service Transformer Interior Photo



Station Service Electrical Panel

Size in Amps

**250**

Voltage

**120/208**

Total Breaker Spaces

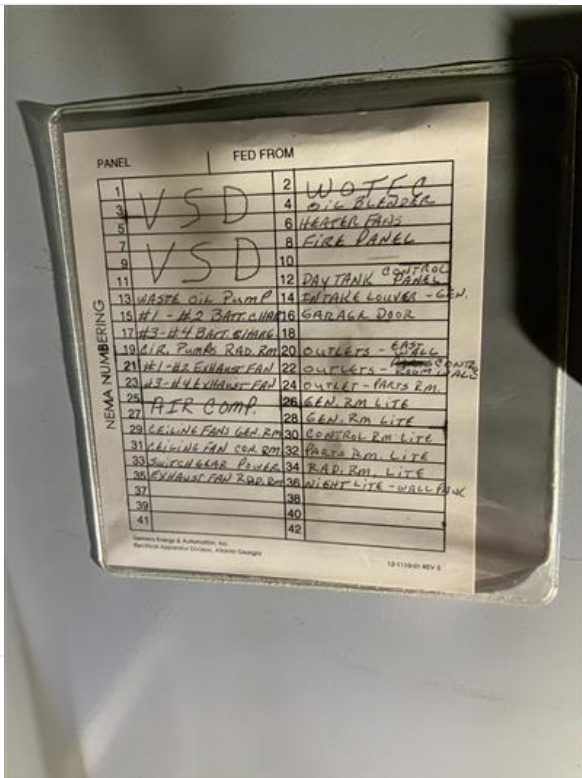
**40**



Open Door Photo



Circuit Directory Photo





Engine Serial Number

**SE6081H391611**

Engine Operational

**Yes**

Engine Hours

**19,861**

Date put into service

**Oct 13, 2014**

Engine Governor Type

**Woodward**

Model Actuator

**8256-017E**

Model Speed Control

**8290-186**

Engine DC Voltage

**12**

Muffler Connection (Diameter)

**4**

Engine Photos

Engine Tag Photo



Left Side of Engine Photo



Right Side of Engine Photo



Battery Charger Information

Battery Charger Make & Model

**Charles Industries 93- AA1220-HLP**

Battery Charger Photo



Engine Arrangement #:

**2**

Engine Information

Engine Make

**John Deere**

Engine Model

**6068TF250**

Engine RPM

**1800**

Engine Serial Number

**PE6068T330451**

Engine Operational

**Yes**

Engine Hours

**40,345**

Date put into service

**Jan 27, 2004**

Engine Governor Type

**Woodward**

Model Actuator

**8256-017E**

Model Speed Control

**8290-186**

Engine DC Voltage

**12**

Muffler Connection (Diameter)

**4**

Engine Photos

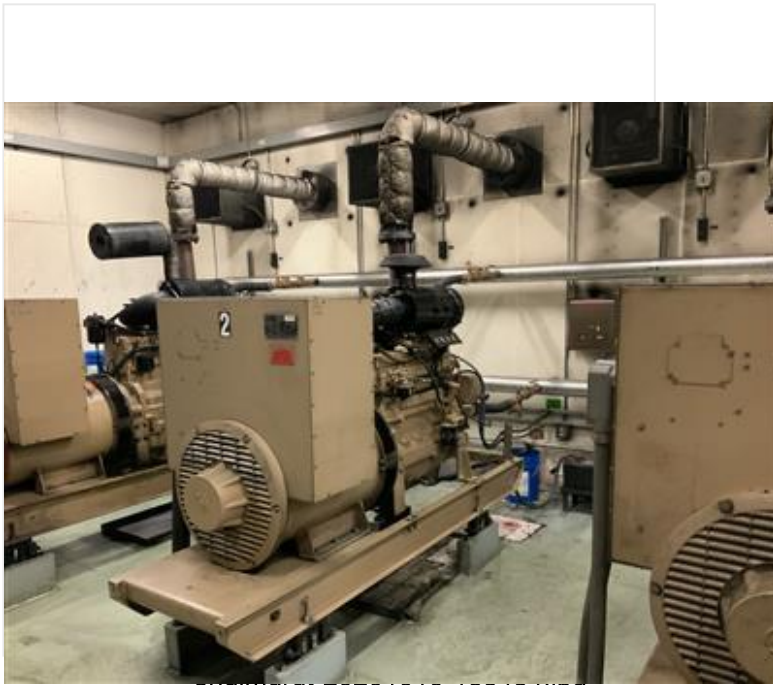
Engine Tag Photo



Left Side of Engine Photo



Right Side of Engine Photo



### Battery Charger Information

Battery Charger Make & Model

**Charles Industries 93-AA1220-HLP**



Battery Charger Photo



Engine Arrangement #:

**3**

Engine Information

Engine Make

**John Deere**

Engine Model

**6068TF250**

Engine RPM

**1800**

Engine Serial Number

**SE6068Z001177**

Engine Operational

**No**

Engine Hours

**3,500**

Date put into service

**Nov 17, 2016**

Engine Governor Type

**Woodward**

Model Actuator

**8256-017E**

Model Speed Control

**8290-186**

Engine DC Voltage

**12**

Muffler Connection (Diameter)

**4**

Engine Photos



Engine Tag Photo



Left Side of Engine Photo



Right Side of Engine Photo



Battery Charger Information

Battery Charger Make & Model

**Charles Industries 93- AA1220-HLP**

Battery Charger Photo



Engine Arrangement #:

**4**

Engine Information

Engine Make

**John Deere**

Engine Model

**4045TF150**

Engine RPM

**1800**

Engine Serial Number

**PE4045T328466**

Engine Operational

**Yes**

Engine Hours

**22,453**

Date put into service

**Jan 26, 2004**

Engine Governor Type

**Woodward**

Model Actuator

**8256-017E**

Model Speed Control

**8290-186**

Engine DC Voltage

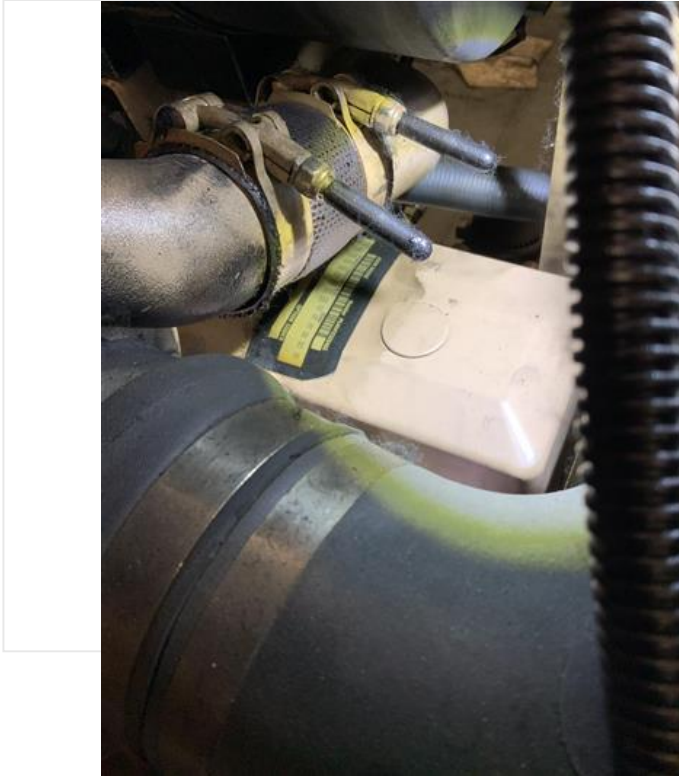
**12**

Muffler Connection (Diameter)

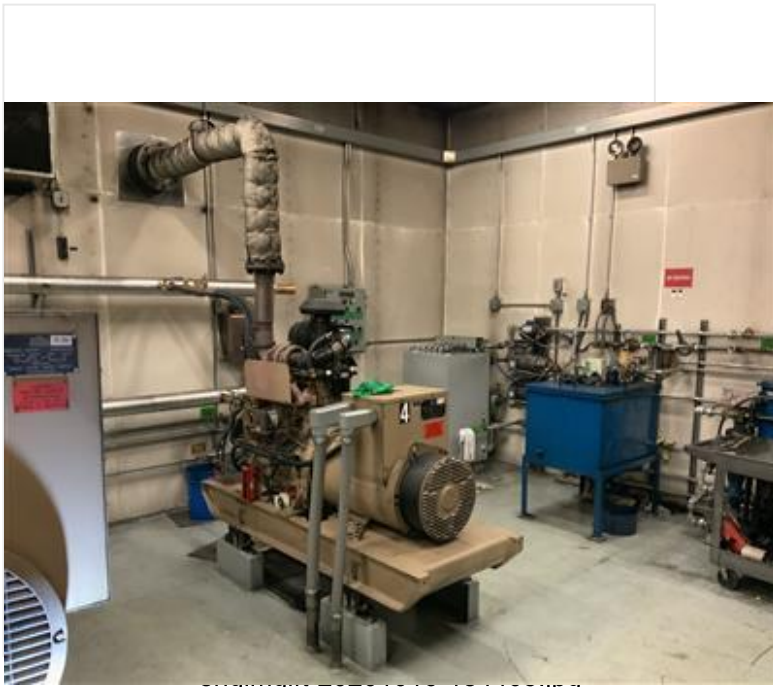
**4**

Engine Photos

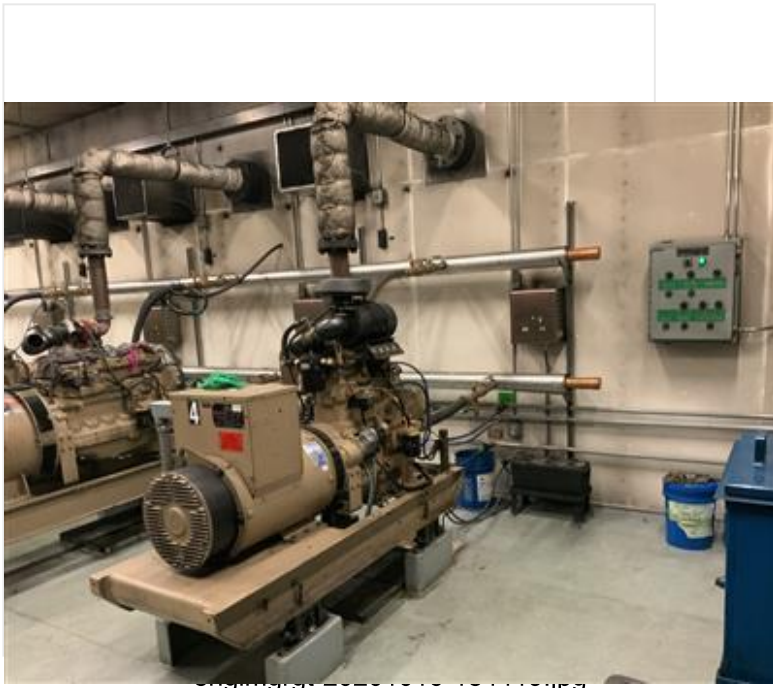
Engine Tag Photo



Left Side of Engine Photo



Right Side of Engine Photo



### Battery Charger Information

Battery Charger Make & Model

**Charles Industries 93- AA1220-HLP**

Battery Charger Photo



**Score the Diesel Engine and Exhaust**

**3**

Generator/Alternator

AC Generator Information:

AC Generator Arrangement #:

**1**

AC Generator Make

**Marathon**

AC Generator Model

**431PSL6206**

AC Generator Serial Number

**WA-537815-0204**

AC Generator Voltage

**277/480Y**



AC Generator kW

**130kW**

Genset Mounted Unit CB Type

**N/A**

Genset Mounted CB Trip Setting Amps

**N/A**

Generator Tag Photo



acgentgimg-20201016-184934.jpg

Voltage Regulator Information

Voltage Regulator Make & Model

**Marathon DVR2000E**

AC Generator Arrangement #:

**2**

AC Generator Make

**Marathon**

AC Generator Model

**431PSL6202**

AC Generator Serial Number

**WA-537821-0204**

AC Generator Voltage

**277/480Y**

AC Generator kW

**100kW**

Genset Mounted Unit CB Type

**Na**

Genset Mounted CB Trip Setting Amps

**Na**

Generator Tag Photo



acgentgimg-20201016-185021.jpg

Voltage Regulator Information

Voltage Regulator Make & Model

**Marathon DVR2000E**

AC Generator Arrangement #:

**3**

AC Generator Make

**Marathon**

AC Generator Model

**431PSL6202**

AC Generator Serial Number

**WA-537759-0204**

AC Generator Voltage

**277/480Y**

AC Generator kW

**100kW**

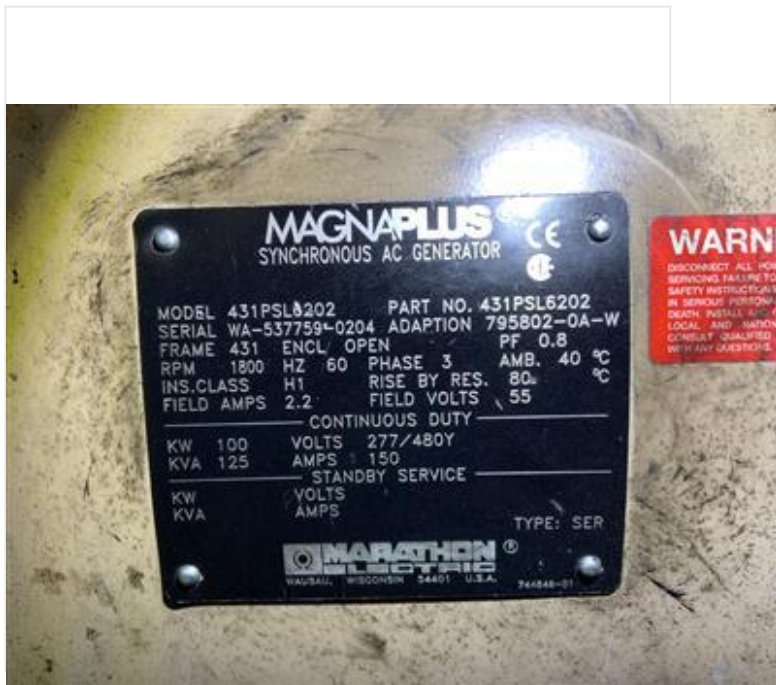
Genset Mounted Unit CB Type

**NA**

Genset Mounted CB Trip Setting Amps

**NA**

## Generator Tag Photo



acgentgimg-20201016-185058.jpg

## Voltage Regulator Information

Voltage Regulator Make &amp; Model

**Marathon DVR2000E**

AC Generator Arrangement #:

**4**

AC Generator Make

**Marathon**

AC Generator Model

**362PSL1604**

AC Generator Serial Number

**LM-392425-0104**

AC Generator Voltage

**277/480Y**

AC Generator kW

**65kW**

Genset Mounted Unit CB Type

**Na**

Genset Mounted CB Trip Setting Amps

**Na**

Generator Tag Photo



acgentgimg-20201016-185151.jpg

Voltage Regulator Information

Voltage Regulator Make & Model

**Marathon DVR2000E**

**Score the AC Generator**

**3**

Switchgear

Switchgear Information

Switchgear - Make & Model

**Controlled power s/n 5682**

Switchgear - Bus Amps

**1000**

Switchgear - Type

**Automatic**

Switchgear - Year Installed

**2005**

Feeder Breaker - Make & Model

**GE Spectra RMS SGHA36AT0600**

Switchgear Breakers

Switchgear Breaker Make & Model

**GE Spectra RMS SGHA36AT0600**

Switchgear Breaker Trip Plug Amps

**400**

Switchgear Breaker Photo



Switchgear Breaker Make & Model

**SS: GE Spectra RMS SEHA36AT0060**

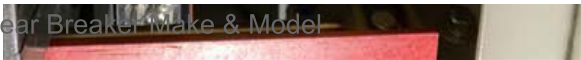
Switchgear Breaker Trip Plug Amps

**50**

Switchgear Breaker Photo



Switchgear Breaker Make & Model



**G1: GE Spectra RMS SGHA36AT0400**

Switchgear Breaker Trip Plug Amps

**300**

Switchgear Breaker Photo



Switchgear Breaker Make & Model

**G2: GE Spectra RMS SGHA36AT0400**

Switchgear Breaker Trip Plug Amps

**225**



Switchgear Breaker Photo



Switchgear Breaker Make & Model

**G3: GE Spectra RMS SGHA36AT400**

Switchgear Breaker Trip Plug Amps

**225**

Switchgear Breaker Photo



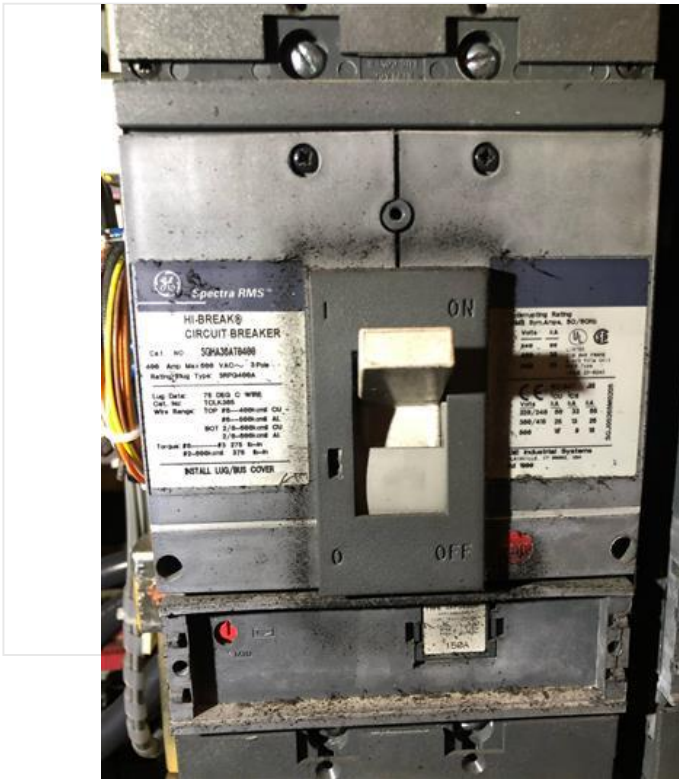


**G4: GE Spectra RMS SGHA36AT400**

Switchgear Breaker Trip Plug Amps

**150**

Switchgear Breaker Photo



SCADA - Operational

**No**

Bus Meter - Manufacturer

**Ion**

Bus Meter - Model

**7650**

Bus Meter - CT Ratio

**400:5**

Bus Meter - Type

**Digital**

Bus Meter - Operational

**Yes**

Demand meter Operational

**Yes**

Station Service Meter - Make & Model

**Ion 7550**

Station Service Meter - CT Ratio

**50:5**

Station Service Meter Operational

**No**

Load Demand Capability

**No**

Load Share Paralleling Capability

**Yes**

Master Section Photo

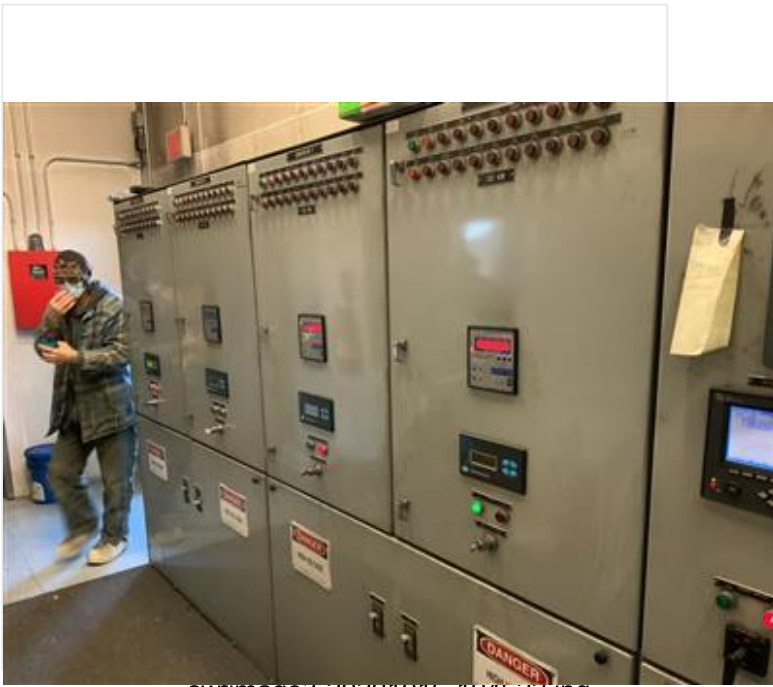


swtimage1-20201016-194528.jpg

Feeder/Meter/VFD Photo



## Generator Photo



swtimage3-20201016-194622.jpg

**Score the Switchgear**

2

## Fuel System and Day Tank

Day Tank Shape and Capacity

**Rectangular 100 gallon**

Day Tank Pump Assembly Make/Model

**Up- Oberdorfer N991-32M F01 / down- Oberdorfer N994**

Day Tank Incoming Fuel Meter Make/Model

**AMCO 92146**

Oil Blender Make &amp; Make

**Wotec 15XDC**

Where does the fuel come from?

**Intermediate Tank**

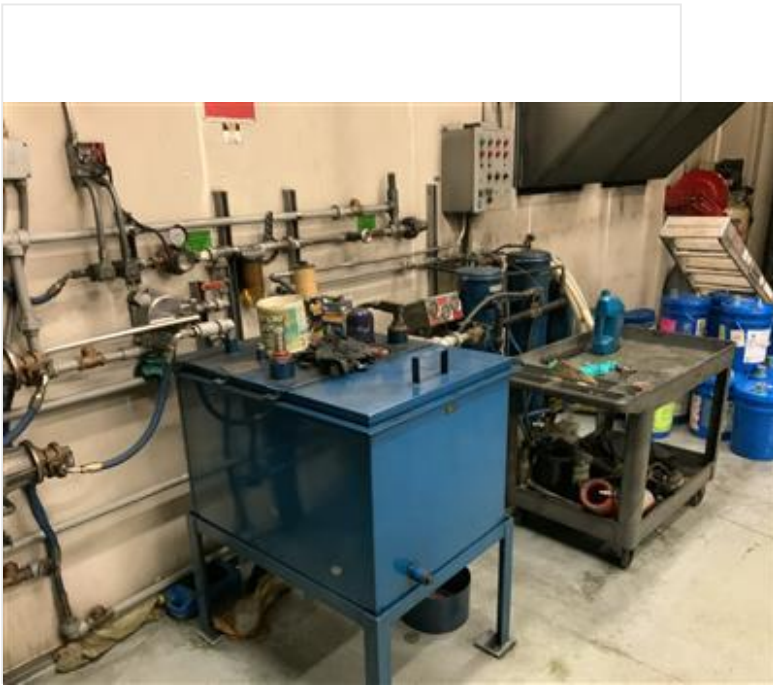
Front of Day tank Photo



Day Tank Pump Photo



Oil Blender Photo



fsdtimgob-20201016-195111.jpg

**Score the Fuel System and Day Tank**

4

Cooling System, Charge Air, & Heat Recovery

Radiator & Cooler Information

Radiator or Charge Air Cooler

**Radiator**

Unit #

**1**

Make & Model

**Young MWC 46-FRD2-2P**

Horsepower

**2hp**

Voltage

**208**

- Front Description

**Inside fan room**

- Front Photo



cchrimage1-20201016-151136.jpg

- Back Description

**Exterior ducted**





Unit #

**2**

Make & Model

**Young MWC 46-FRD2-2P**

Horsepower

**2HP**

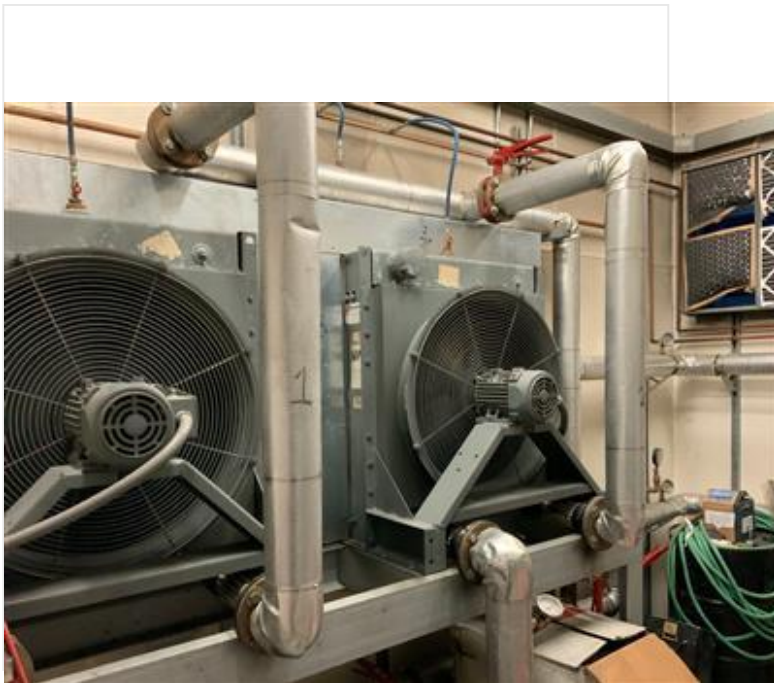
Voltage

**208**

- Front Description

**Exterior ducted**

- Front Photo



cchrimage1-20201016-195500.jpg

- Back Description

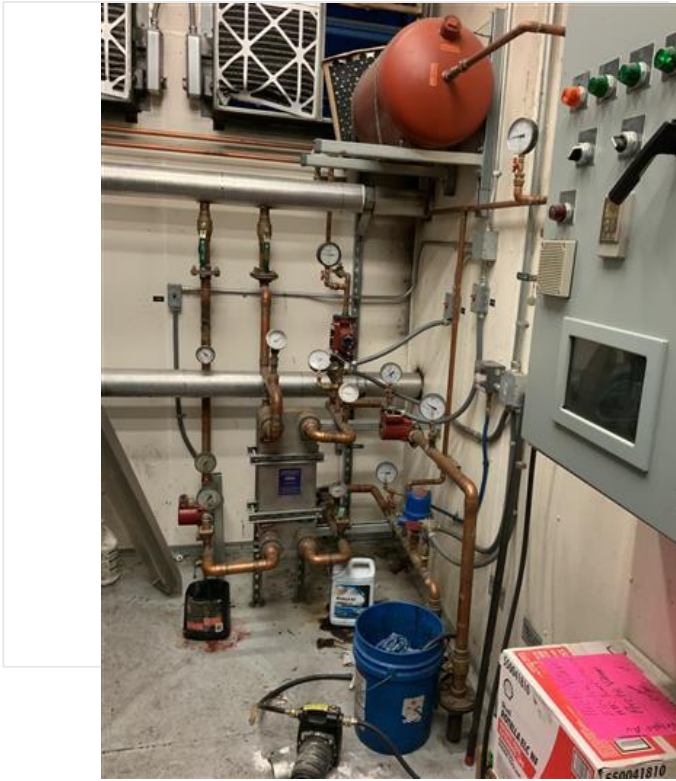
**Interior room**



Heat Exchanger Make & Model

**Ameridex SL-140-TL-LL-32**

Heat Exchanger Photo



Primary Pump Make & Model

**Grundfos UP 26-64F**

Primary Pump Photo

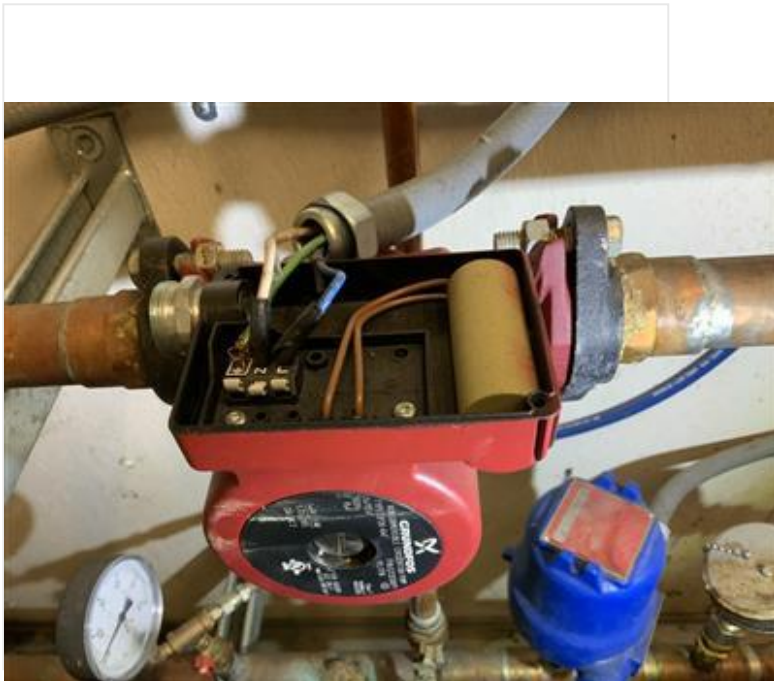


nrpmpimg1-20201016-195748.jpg

Secondary Pump Make & Model

**Grundfos UPS 15-42F**

Secondary Pump Photo



nrpmpimg2-20201016-195817.jpg

BTU/HR Metering in Powerhouse

**No**

BTU Make & Model

**NA**

BTU Photo



**Score the Cooling System, Charge Air, & Heat Recovery**

**3**

Intermediate Tank & Pipeline

Is the tank single or double wall?

**Single**

Tank Volume

**5,800**

Photo Description

**Rectangular tank in earthen dike**

Photo



intpimg-20201016-202041.jpg

**Score the Intermediate Tank & Pipeline**

5

Step-up Transformer & Distribution

Step-up Transformer

Make & Model

**Unknown**

Size KVA

**150**

Pad Mount or Overhead

**Pad Mount**

Step-up Transformer Photo Description

**Pad mount with no kva label**

Step-up Transformer Photo



stptimg-20201016-202153.jpg

Distribution System

Phases

**3**

Overhead or Underground Distribution

**Underground**

**Score the Step-up Transformer & Distribution**

**4**

Deficiencies

Deficient Equipment

**Diesel Engine & Exhaust**

Deficient Type

**Exhaust Leaks**



Unit #

**1**

Description

**Exhaust leak**

Questions

Corrected Onsite

**No**

Action needed

**Minor repair**

Risk of catastrophic failure

**NA**

Reliability

**Moderate impact**

Affordability

**Minor effect**

1) Description/Notes

**Exhaust leak has coated interior plant in soot**

1) Deficiencies Photo

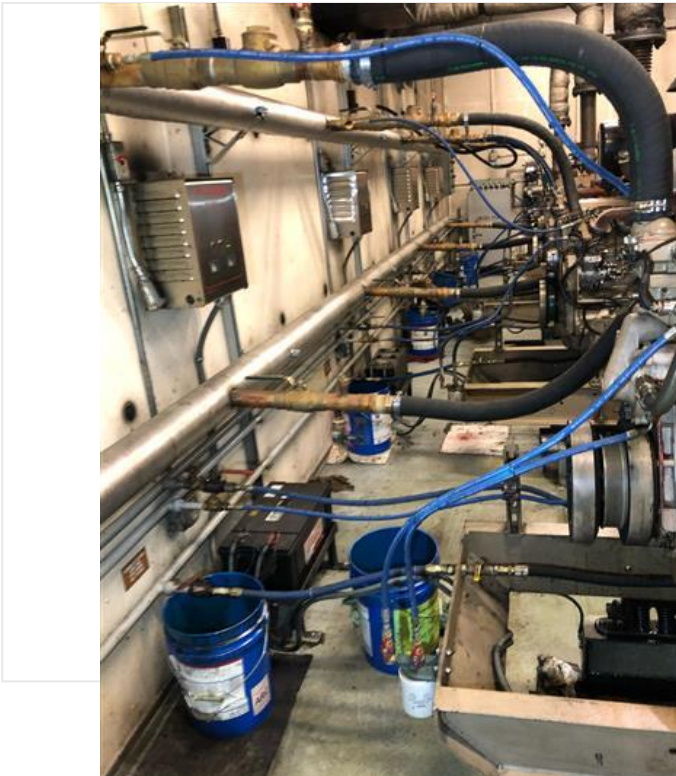


defcntimg1-20201018-151359.jpg

2) Description/Notes

**Engines lacking pulley guards**

2) Deficiencies Photo



Deficient Equipment

**Diesel Engine & Exhaust**

Deficient Type

**Shrouds & Guards**

Unit #

**1**

Description

**All engines lack pulls guards**

Questions

Corrected Onsite

**No**

Action needed

**Replace**

Life, health, safety

**Potential of minor injury due to code violations.**

Risk of catastrophic failure

**NA**

Reliability

**Low impact**

1) Deficiencies Photo



finalscore

**28**

Contractor Submission Status

**Approved**

aprvcntnm

**Karl Hulse**

mttrprtlnk

**[https://my.matterport.com/models/WSsCY13GuLC?cta\\_origin=all\\_spaces\\_page&section=media&mediasection=showcase](https://my.matterport.com/models/WSsCY13GuLC?cta_origin=all_spaces_page&section=media&mediasection=showcase)**

bldscore1

**4**

engscore1

**3**

acgenscor1

**3**

swtchscor1

**2**

fsdtscore1

**4**

hrscore1

**3**

intptscor1

**5**

stptscor1

**4**

finalscor1

**28**

# AEA Powerhouse Assessment

Submitted by: 49S-49thstate

Submitted time: Oct 1, 2020, 1:14:49 PM

## Powerhouse Assessment General Information

Community

**Chenega Bay**

Evaluator Name

**Daniel Roberts**

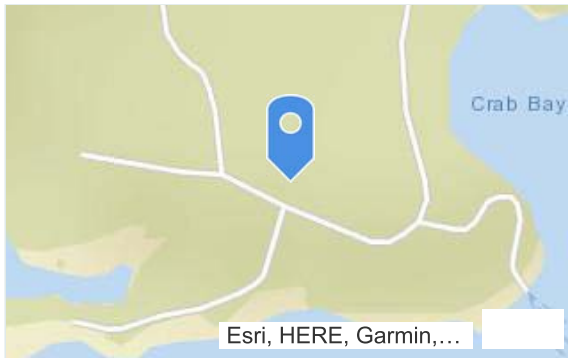
Utility

**Chenega Ira Council**

Powerhouse Building

Location of Powerhouse

**Lat: 60.06541 Lon: -148.01456**



Building Type

**Engineered Bldg**

Foundation Type

**Treated wooden sleepers**

Floor Type

**Feberglass over wood**

Wall Type

**FRP**

Roof Type

**Metal**

Fire Protection System

**Yes**

Fire Protection System Photo Description

**Dry agent (Inergen) with Autopulse IQ-318 panel. system is not in operation.**

Fire Protection System Photo

bldfrpsim-b0ec3422e88c45c3bd0a28d2857c5f95.  
2.2MB

Station Service Transformer Interior

Size in kVA

**15**

Primary Voltage

**480**

Secondary Voltage

**240/120**

Phase

**1**

Station Service Transformer Interior Photo

steriimg-68d5ff87f1cb4ad599832b70b1cc60fc.  
1.9MB

Station Service Electrical Panel

Size in Amps

**200**

Voltage

**240**

Total Breaker Spaces

**18**

Open Door Photo

stereimg1-ed75c4312a5a4438824ae97b3124da0d.  
2.2MB

Circuit Directory Photo

stereimg2-c55055ecef7d4c79a6e369772af299f0.  
2.2MB

Manufacturer Tag Photo

stereima3-5d2c9dbfda5747928aa923b58fe2f8e4.  
1.9MB

**Score the Powerhouse Building**

**4**

Diesel Engines & Exhaust

Engine Specifications: #

Engine Arrangement #:

**1**

Engine Information

Engine Make

**John Deere**

Engine Model

**4045AFM85**

Engine RPM

**1800**



Engine Serial Number

**PE4045N023350**

Engine Operational

**Yes**

Engine Hours

**86**

Approximate % of year operated

**50**

Date put into service

**Sep 21, 2020**

Engine Governor Type

**ECU**

Model Actuator

**NONE**

Model Speed Control

**NONE**

Engine DC Voltage

**12**

Muffler Connection (Diameter)

**4**

Engine Photos

Engine Tag Photo

engimgtag-7e6953bc9bc44255ba5b88d3734b4030.  
2.2MB

Left Side of Engine Photo

engimglft-b3364fe912154bbcb58f9087bdbf5966.  
2.5MB

Right Side of Engine Photo

engimgrt-0c683b07537a4b078ca70acc8d850ac7.  
2.4MB

**Battery Charger Information**

Battery Charger Make & Model

**SENS NRG12-20-RCLS**

Battery Charger Photo

bldbtcim-e03b22607ffc4b2499ae7b1fd9e7546a.  
2.2MB

Engine Arrangement #:

**2**

**Engine Information**

Engine Make

**John Deere**

Engine Model

**4045TFM75**

Engine RPM

**1800**

Engine Serial Number

**PE4045T613714**

Engine Operational

**Yes**

Engine Hours

**45,548**

Approximate % of year operated

**50**

Engine Governor Type

**ECU**

Model Actuator

**NONE**

Model Speed Control

**NONE**

Engine DC Voltage

**12**

Muffler Connection (Diameter)

**4**

**Battery Charger Information**

Battery Charger Make & Model

**SENS NRG12-20-RCLS**

Battery Charger Photo

bldbtcim-06c8b28109b94a8e8fa209247fd4ae79.  
2.5MB

**Score the Diesel Engine and Exhaust**

**5**

**Generator/Alternator**

AC Generator Information:

AC Generator Arrangement #:

**1**

AC Generator Make

**STAMFORD**

AC Generator Model

**UCI274D1**

AC Generator Serial Number

**N18K479771**

AC Generator Voltage

**480**

AC Generator kW

**105**

Genset Mounted Unit CB Type

**NONE**

Genset Mounted CB Trip Setting Amps

**NONE**

Generator Tag Photo

acgentgimg-320f4b4057c44709bcb3ac09b0c286b4.  
2.7MB

Voltage Regulator Information

Voltage Regulator Make & Model

**Newage MX-341**

AC Generator Arrangement #:

**2**

AC Generator Make

**Stamford**

AC Generator Model

**UCI224G1L**

AC Generator Serial Number

**M07H213597-02**

AC Generator Voltage

**480**

AC Generator kW

**76**

Genset Mounted Unit CB Type

**NONE**

Genset Mounted CB Trip Setting Amps

**NONE**

Generator Tag Photo

acgentgimg-a95ae96d569245a6bc0323b517fb99d8.  
2.4MB

Voltage Regulator Information

Voltage Regulator Make & Model

**Newage MX-321**

**Score the AC Generator**

**5**

Switchgear

Switchgear Information

Switchgear - Make & Model

**Custom, Applied Power & Control**

Switchgear - Bus Amps

**400**

Switchgear - Type

**Custom Woodward GCP-31 based**

Switchgear - Year Installed

**2007**

Feeder Breaker - Make & Model

**None**

Switchgear Breakers

Switchgear Breaker Make & Model

**ABB XT3NQ3150AFF000**

Switchgear Breaker Trip Plug Amps

**150A trip rating**

Switchgear Breaker Make & Model

**ABB XT3NQ3100AFF000**

Switchgear Breaker Trip Plug Amps

**100A trip**

SCADA - Installed

**Direct logic by Koyo**

SCADA - Operational

**No**

Bus Meter - Manufacturer

**Crompton**

Bus Meter - Model

**Integra 1530**

Bus Meter - CT Ratio

**300:5**

Bus Meter - Type

**Multifunction**

Bus Meter - Operational

**Yes**

Demand meter Operational

**Yes**

Station Service Meter - Make & Model

**Itron Sentinel**

Station Service Meter - CT Ratio

**200:5**

Station Service Meter Operational

**Yes**

Load Demand Capability

**No**

Load Share Paralleling Capability

**Yes**

Master Section Photo

swimage1-4dd6270a027545bdbb7ee5825495f3a1.  
4.1MB

Feeder/Meter/VFD Photo

swtimage2-f81e0f215d2548b4af2034dd4758c328.  
3.7MB

Generator Photo

swtimage3-deae7fc05fb84e8e9d0087c5c2368213.  
3.8MB

### Score the Switchgear

3

#### Fuel System and Day Tank

Day Tank Shape and Capacity

**Square 50g**

Day Tank Pump Assembly Make/Model

**Pryco 50ULDW**

Day Tank Incoming Fuel Meter Make/Model

**AMCO 20 RC USG**

Oil Blender Meter Operational

**NA**

Where does the fuel come from?

**Pipeline to Bulk Tank**

Pipeline Outside PH to Tank Farm Photo

fsdtimgbf-ce8906c4d261485b996290f04de760b5.  
3.4MB

Front of Day tank Photo

fsdtimgfrt-3042482dd32e464cb302394af4855d0c.  
4.1MB



Day Tank Pump Photo

fsdtimgpmp-f488a793b7364620a66a3bfda012f46b.  
4MB

**Score the Fuel System and Day Tank**

**2**

Cooling System, Charge Air, & Heat Recovery

Radiator & Cooler Information

Radiator or Charge Air Cooler

**Radiator**

Unit #

**1**

Make & Model

**Mesabi 13113 1-2**

Horsepower

**3**

Voltage

**480**

- Front Description

**This is the front**

- Front Photo

cchrimage1-791c3e13df86423a8cc5dbd2a589aeef.  
2.5MB

- Back Description

**This is the back**

- Back Photo

cchrimage2-65f11be9728e4370990da21f7086cece.  
1.7MB

- Motor Name Tag Description

**This is the motor tag**

- Motor Name Tag Photo

cchrimage3-1a4b7f0f5c0c4edcb8de0ae6c58401d1.  
3.2MB

**Score the Cooling System, Charge Air, & Heat Recovery**

5

Step-up Transformer & Distribution

Step-up Transformer

Size KVA

**75KVA x 3**

Pad Mount or Overhead

**Pad Mount**

Step-up Transformer Photo Description

**1 of 3 step up xfmr Y-Y connected**

Step-up Transformer Photo

stptimg-3582905b9a9f4092acf7a22607323fb4.  
1.9MB

Distribution System

Primary Voltage

**12,470**

Phases

**3**

Overhead or Underground Distribution

**Underground**

**Score the Step-up Transformer & Distribution**

**4**

Deficiencies

Deficient Equipment

**Bulk tank piping**

Description

**Bulk fuel tank feeds directly in to the day tank. Hose connection leading in to plant is a potential failure point. As currently configured the bulk tanks do not utilize a motorized valve or anti-siphon device.**

**This could lead to a large spill.**

Deficient Equipment

**Distribution System**

Unit #

**1**

finalscore

**28**

Contractor Submission Status

**Approved**

aprvcntnm

**Karl Hulse**

aprvcntdt

**Nov 20, 2020**

bldscore1

**4**

engscore1

**5**

acgenscor1

**5**

swtchscor1

**3**

fsdtscore1

**2**

hrscore1

**5**

stptscor1

**4**

finalscor1

**28**



# Chenega IRA Council

3000 C Street, Suite 200 South Wing  
Anchorage, Alaska 99503-3975

Contact: Buell Russell, General Manager  
Phone: (907) 230-3036  
Fax: (907) 569-6939  
Email: brussell@chenegaira.com

## NATIVE VILLAGE OF CHENEGA TRIBAL COUNCIL

### RESOLUTION NO. 20-12

#### RESOLUTION REGARDING COVID-19 SOCIAL DISTANCING, SHUTDOWN OF AIRPORT AND HARBOR FACILITIES, NON-ESSENTIAL TRAVEL, QUARANTINE, AND AUTHORIZING DELIVERY OF SUPPLIES

WHEREAS: the Native Village of Chenega (the “**Village**”) is a federally-recognized, self-governing Tribe;

WHEREAS: the Native Village of Chenega Tribal Council (the “**Tribal Council**”) is the duly authorized governing body of the Native Village of Chenega;

WHEREAS: on March 11, 2020, Alaska Governor Michael Dunleavy declared a Public Health Disaster Emergency Declaration in the State of Alaska in connection with the COVID-19 pandemic;

WHEREAS: on April 28, 2020, the Village adopted Resolution No. 20-05 restricting travel to and from Chenega and setting forth other health guidelines (the “**Former Policy**”) in order to protect residents and members of the Village of Chenega; and

WHEREAS: the Tribal Council desires to adopt a new travel and health policy as set forth in the resolutions below (the “**Policy**”) amending and restating in its entirety the Former Policy.

NOW, THEREFORE, BE IT:

RESOLVED, that the Former Policy is hereby revoked, and the Policy, as set forth Resolutions below, is hereby adopted and approved.

RESOLVED, travel to and from the Village of Chenega, including via the airport or docks and other harbor facilities, is prohibited by all persons except for the following subject to the restrictions set forth below:

- (1) **Official Personnel.** Emergency First Responders (including fire, ambulatory services, and other similar emergency first responders), law enforcement personnel acting within their official duties (including federal, state and local law enforcement personnel, as

well as corrections personnel), and Office of Children's Services personnel responding to reports of child abuse and neglect and insuring child safety (together, "**Official Personnel**"), maintaining a distance of six (6) feet from persons with whom you do not reside; wearing face coverings when interacting with other persons; and not gathering in groups of more than six (6) persons (both indoors and outdoors).

- (2) **Permitted Travelers.** Village residents, tribal members of the Native Village of Chenega, shareholders of The Chenega Corporation, and immediate family which includes such person's parents, children and dependents, and spouse or companion (collectively, "**Permitted Travelers**") subject to the Traveler Mandate set forth below.
- (3) **Essential Workers.** Personnel needed to ensure the continuing operations of government agencies including to provide for the health, safety, and welfare of the public subject to the Traveler Mandate set forth below.
- (4) **Traveler Mandate.** All Permitted Travelers and Essential Workers are subject to the following rules and mandates (the "**Traveler Mandate**"):
  - (i) No Permitted Traveler or Essential Worker shall enter Chenega unless the Permitted Traveler or Essential Worker provides documentation of negative COVID-19 test taken within 72 hours before travel to Chenega and such person delivers a signed certification in the form attached as Exhibit A, certifying they have tested negative for COVID-19 and acknowledging other matters set forth therein.
  - (ii) No Permitted Traveler or Essential Worker who has symptoms of COVID-19 and no Permitted Traveler or Essential Worker who has had contact within 14 days of travel with a person who has COVID-19 may travel to Chenega or enter the Village.
  - (iii) All Permitted Travelers and Essential Workers entering the Village shall have a second COVID-19 test five (5) to seven (7) days after their arrival in the Village, administered by the Village health aide in the Village; and
  - (iv) For 14 days after their arrival in the Village, all Permitted Travelers and Essential Workers shall practice enhanced social distancing by: (i) minimizing interactions with all people other than those with whom they are residing; (ii) maintaining 10 feet of distance from other persons at all times; (iii) wearing a face mask outside their residence; (iv) not entering any homes or public spaces such as the church, laundromat, Village offices or Post Office; (v) not gathering with any persons other than those in their place of residence in Chenega; and (vi) not permitting any persons or visitors inside their place of residence (together, "**Enhanced Social Distancing**"). Subject to these requirements, persons may travel in and around the Village and engage in outdoor activities; and

(v) **Resident Traveler Testing Exception.** A full-time resident of Chenega who leaves the Village for a period of three (3) days or less, does not need to take a COVID-19 test before returning to the Village, provided such persons shall be subject to a test five (5) to seven (7) days after their arrival in the Village, administered by the Village health aide in the Village and such persons shall practice Enhanced Social Distancing for fourteen (14) days after return to Village.

(5) **Fishing Industry Personnel.** Persons engaged in the fishing industry; provided such persons are (i) traveling for an emergency health care need, or (ii) undertaking a critical repair to a fishing industry vessel where no other dock or harbor facility or other arrangement is reasonably available to such vessel. Other than in connection with an emergency health care need or a critical repair, no person engaged in the fishing industry nor any commercial fishing vessel of any kind shall use, tie up, or make use of Village harbor or dock facilities or Village airport. Persons using the dock or harbor facility or the airport for a Critical Health Care Need or Critical Repair shall not enter the Village or any building or structure in the Village for any reason and such persons shall, at all times, practice Enhanced Social Distancing.

RESOLVED, that all persons in the Village of Chenega shall practice social distancing by maintaining a distance of six (6) feet from persons with whom you do not reside; wearing face coverings when interacting with other persons; and not gathering in groups of more than six (6) persons (both indoors and outdoors).

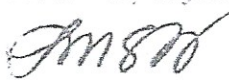
RESOLVED, that the Village of Chenega, its council members, employees and representatives are authorized and directed to take all actions and steps necessary to implement the travel restrictions set forth above.

RESOLVED: that a portion of CARES Act funding shall be used to support and implement the foregoing resolutions.

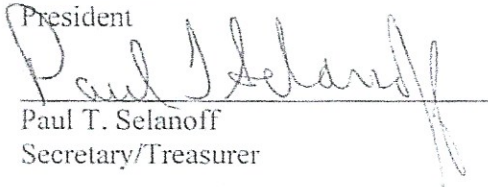
CERTIFICATION:

THIS IS TO CERTIFY THAT this resolution was passed at a duly called meeting of the Chenega IRA Council on the 10<sup>th</sup> day of June 2020 with 3 for, 0 against, and 2 absent.

Attest:



Larry Evanoff  
President



Paul T. Selanoff  
Secretary/Treasurer

6/12/20  
Date

6/12/20  
Date

**CHENEGA TRAVELER CERTIFICATION AND AGREEMENT**

The undersigned \_\_\_\_\_(name) (“**Traveler**”) desires to travel to the Village of Chenega and delivers this certification (this “**Certification**”) for the benefit of the Native Village of Chenega Tribal Council (the “**Tribal Council**”) which is the duly authorized governing body of the Native Village of Chenega.

During the COVID-19 pandemic, the protection of the residents, tribal members, Chenega Corporation shareholders and other persons associated with the Chenega community is the highest priority. The Traveler acknowledges that the Coronavirus presents an outsize risk to the Village of Chenega

Traveler certifies the following information is true and correct:

<b>Traveler Name:</b>	
<b>Cell Phone Number:</b>	
<b>Place of Residence in Chenega:</b>	
<b>Name of Person with Whom Traveler is residing and relationship to this Person:</b>	
<b>Emergency Contact Information:</b>	
<b>Anticipated Length of Stay:</b>	

Traveler certifies that they have received a test for the Coronavirus and that the test is negative. \_\_\_\_\_ INITIAL. Test results must be delivered together with this Certification.

Traveler certifies that they have not interacted with any persons infected with Coronavirus within the past 14 days. \_\_\_\_\_ INITIAL.

Traveler is not and has not, within the past seventy-two (72), hours experienced any COVID-19 symptoms, including coughing, shortness of breath, fever, fatigue, chills, muscle, pain, sore throat, or loss of taste or smell. \_\_\_\_\_ INITIAL.

Traveler agrees that they shall comply with the following rules and policies during their time in Chenega:

- (i) Traveler shall contact the Village Health Aide for a second COVID-19 test administered by the Village health aide five (5) to seven (7) days after arrival in the Village. \_\_\_\_ INITIAL
- (ii) For 14 days after their arrival in the Village, all Permitted Travelers and Essential Workers shall practice enhanced social distancing by: (i) minimizing interactions with all people other than those with whom they are residing; (ii) maintaining 10 feet of distance from other persons at all times; (iii) wearing a face mask outside their



residence; (iv) not entering any homes or public spaces such as the church, laundromat, Village offices or Post Office; (v) not gathering with any persons other than those in their place of residence in Chenega; and (vi) not permitting any persons or visitors inside their place of residence. \_\_\_\_ INITIAL

Traveler hereby waives rights to protection and confidentiality with respect to any confidential information (including related to the Traveler’s COVID-19 test results or health condition as it relates to COVID-19) provided to or learned by the Native Village of Chenega or its personnel with respect to Traveler’s health. Traveler acknowledges the Native Village of Chenega and its Village officials and personnel may find it reasonably necessary or appropriate to disclose Traveler’s health information to others within the Chenega community or to public health officials. Traveler hereby waives its rights to privacy, confidentiality and protection under HIPAA and other applicable laws and regulations

Traveler certifies that the above statements are true and correct, and agrees to comply with the above rules and policies.

By: \_\_\_\_\_

Name: \_\_\_\_\_

Date: \_\_\_\_\_

**Instructions:**

**Before you travel:** A completed Traveler Certification Form and a copy of Traveler’s COVID-19 test must be completed and delivered to the Offices of the Native Village of Chenega in Anchorage as follows:

Native Village of Chenega  
Attn: Buell Russell, General Manager  
3000 C Street, Suite 200  
Anchorage, AK 99503  
Direct 907-569-5671  
Cell 907-230-3036  
Fax 907-569-6939  
[brussell@chenegaira.com](mailto:brussell@chenegaira.com)

**On Arrival in Chenega:** On arrival, a copy of this form and a copy of Traveler’s COVID-19 test must be provided to a Native Village of Chenega representative. If this person does not meet your boat or flight when you arrive, call Timmy Selanoff at (907) 632-4429 or Larry Evanoff at (907) 831-1946.

**Testing Before Travel:** Free COVID-19 tests are available at the Alaska Native Medical Center (“ANMC”) in Anchorage at the Walk-In Clinic (907) 792-1395 or Central Registration at (907) 729-1395. Rapid testing is available in the Village of Chenega.