

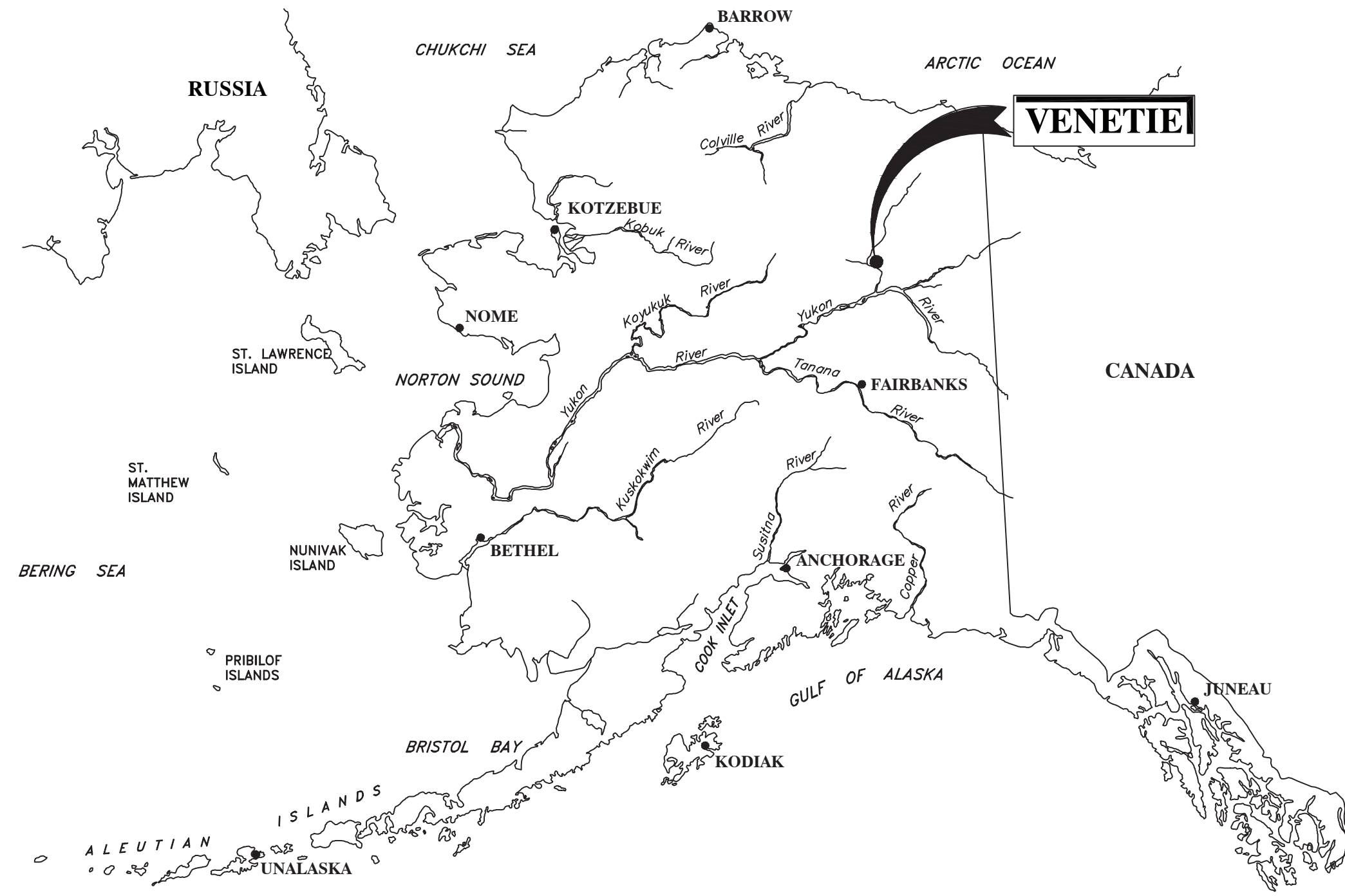
ALASKA ENERGY AUTHORITY

813 West Northern Lights Blvd.
Anchorage, Alaska 99503

VENETIE, ALASKA

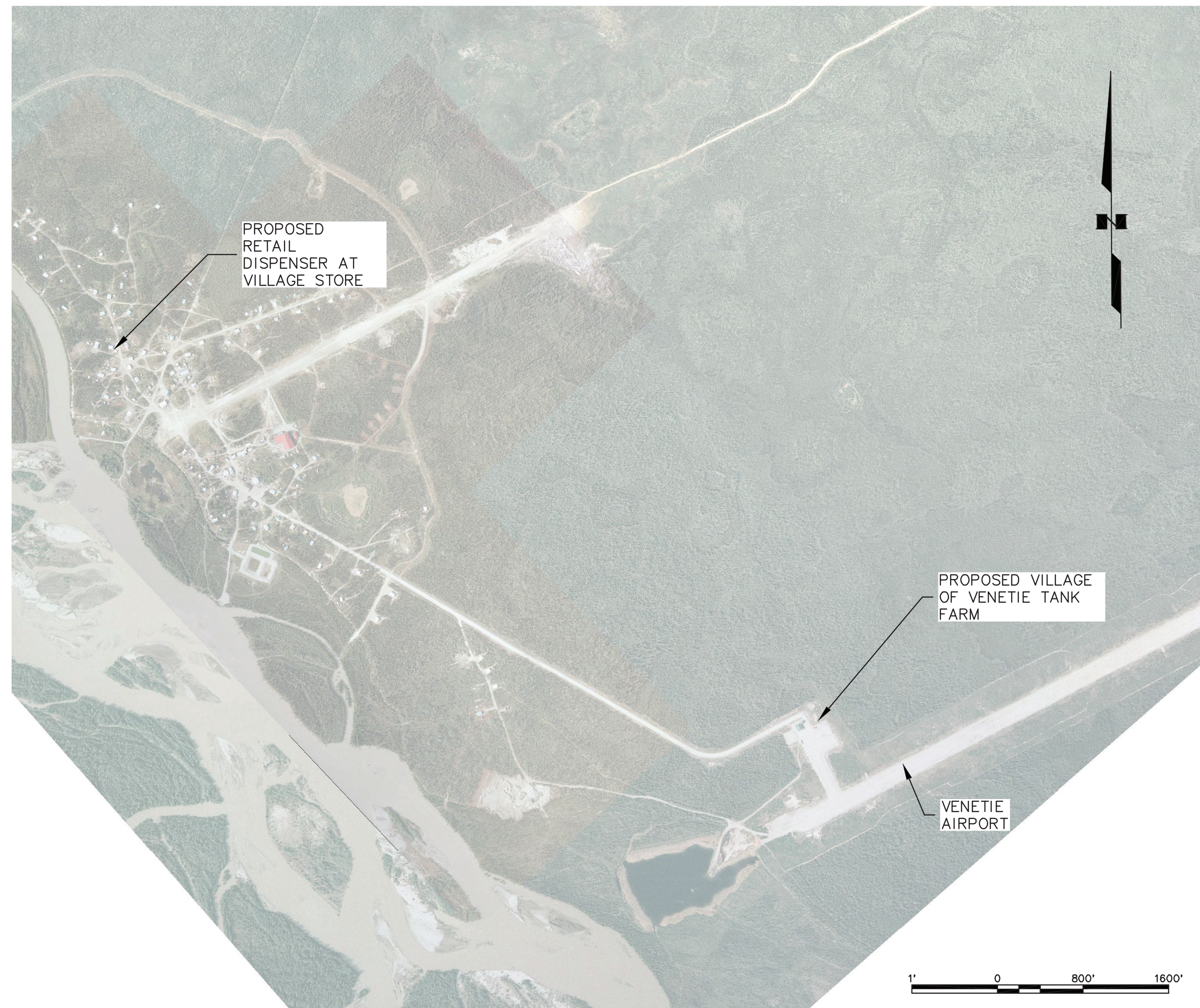
BULK FUEL UPGRADES

ISSUED FOR CONSTRUCTION
NOVEMBER 2021



SHEET INDEX

| SHEET | SHEET TITLE |
|------------|--------------------------------------------------|
| G1.0 | COVER & SHEET INDEX |
| G1.1 | NOTES LEGEND AND ABBREVIATIONS |
| G1.2 | SURVEY CONTROL |
| G1.3 | PROJECT DECOMMISSIONING AND DEMOLITION PLAN |
| G1.4 | COMPONENT SCHEDULES |
| G1.5 | SETBACK AND SIGNAGE PLAN |
| G1.6 | COMMUNITY TANK FARM OPERATING SCHEMATIC |
| C1.0 | VICINITY MAP |
| C1.1 | COMMUNITY TANK FARM SITE PLAN |
| C1.2 | TANK FARM GRADING PLAN |
| C1.3 | TANK FARM PIPING PLAN |
| C1.4 | RETAIL DISPENSING FACILITY SITE PLAN |
| C2.0 | COMMUNITY TANK FARM SECTIONS |
| C2.1 | RETAIL DISPENSING SITE SECTIONS |
| C3.0 | 8,000 GALLON SINGLE WALL TANK DETAILS |
| C3.1 | 5,000 GALLON SINGLE WALL TANK DETAILS |
| C3.2 | 5,000 GALLON TWO PRODUCT DISPENSING TANK DETAILS |
| C3.3 | FUEL PIPING DETAILS |
| C3.4 | TRUCK CONTAINMENT DETAILS |
| C3.5 | TRUCK CONTAINMENT DETAILS |
| C3.6 | DIKE & STAIR DETAILS |
| C3.7 | PUMP CABINET DETAILS |
| C3.8 | HOSE REEL ENCLOSURE DETAILS |
| C3.9 | HOSE REEL DETAILS |
| C3.10 | FENCE DETAILS |
| ELECTRICAL | |
| E1.0 | NOTES LEGEND AND ABBREVIATIONS |
| E2.0 | ELECTRICAL SPECIFICATIONS |
| E3.0 | CONTROL SPECIFICATIONS |
| E4.0 | POWER ONE-LINE |
| E5.0 | GROUNDING PLAN |
| E6.0 | POWER PLAN – COMMUNITY TF |
| E6.1 | POWER PLAN – DISPENSER |
| E7.0 | AREA CLASSIFICATION |
| E7.1 | DISPENSER AREA CLASSIFICATION |
| E8.0 | VENETIE COMMUNITY CONTROL PANEL LAYOUT |
| E8.1 | VENETIE COMMUNITY CONTROL PANEL SCHEMATICS 1 |
| E8.2 | VENETIE COMMUNITY CONTROL PANEL SCHEMATICS 2 |
| E8.3 | VENETIE COMMUNITY CONTROL PANEL SCHEMATICS 3 |
| E9.0 | RETAIL CONTROL PANEL |
| E9.1 | RETAIL CONTROL PANEL SCHEMATICS 1 |
| E9.2 | RETAIL CONTROL PANEL SCHEMATICS 2 |



| | |
|---------------------------------|-------------------|
| Project Number (Consultant) | 30416.00(AEA) |
| AEA Project Manager | WILLIAM PRICE, PE |
| Construction Manager | |
| Final Design (Date) | |
| Fire Marshal Approval (Date) | |
| Construction Period (From) (To) | |
| As-Builts (Date) | |



3940 Arctic Blvd. Suite 300
Anchorage, Alaska 99503
PHONE: (907) 562-3252
#AKCL882-AK



P.O. 111405, Anchorage, AK 99511 (907)349-0100

File: \\10-stare01\share01\JobsData\30416.00_Venetie_BFU_RPSU_Project\001_CADD_2019\01_Working_Sat\00_General\30416.00_NOTES_LEGEND_AND_ABBREVIATIONS.dwg PLOT DATE: 11/2/2021 3:08 PM

PROJECT SCOPE

THIS PROJECT INCLUDES THE FOLLOWING SCOPE:

- INSTALL A NEW COMMUNITY TANK FARM (VILLAGE OF VENETIE) INCLUDING TWO NEW 8,000 GALLON DIESEL SINGLE WALL ASTS AND ONE 5,000 GALLON GASOLINE SINGLE WALL AST WITHIN A LINED EARTHEN DIKE CONTAINMENT SYSTEM
INSTALL NEW 5,000 GALLON PROTECTED DISPENSING TANK AND TWO PRODUCT RETAIL DISPENSER AT THE VILLAGE STORE.
PROVIDE ALL ASSOCIATED MECHANICAL AND ELECTRICAL COMPONENTS AND FUEL APPURTENANCES TO PROVIDE SAFE, OPERABLE, AND CODE-COMPLIANT SYSTEMS.
ITEMS AS NOTED IN THE SPECIFICATIONS.

GENERAL NOTES

- THE CONTRACTOR SHALL PROTECT ALL ITEMS NOT SCHEDULED FOR DEMOLITION DURING CONSTRUCTION. DISTURBED AREAS SHALL BE RESTORED TO PRE-CONSTRUCTION CONDITION.
ALL EXISTING UTILITIES MAY NOT BE SHOWN ON THESE PLANS. THE CONTRACTOR SHALL CONSULT WITH THE APPROPRIATE UTILITY ORGANIZATIONS TO VERIFY AND LOCATE UTILITIES PRIOR TO CONSTRUCTION. SEE "CALL BEFORE YOU DIG" CONTACT INFORMATION ON THIS SHEET.
IT IS THE RESPONSIBILITY OF THE CONTRACTOR TO DETERMINE APPROPRIATE TEMPORARY CUT SLOPES AND SHORING FOR EXCAVATIONS AND TRENCHES FOR SITE SOILS, GROUNDWATER AND RUNOFF CONDITIONS AND SURFACE LOADING CONDITIONS. THE CONTRACTOR MUST COMPLY WITH APPLICABLE FEDERAL AND STATE OSHA REGULATIONS. THE CONTRACTOR SHALL MAINTAIN ALL SIGNS, BARRICADES, WARNING LIGHTS AND OTHER PROTECTIVE DEVICES NECESSARY FOR SAFETY AND TRAFFIC CONTROL.
THE CONTRACTOR SHALL BE RESPONSIBLE FOR COORDINATING THEIR WORK WITH EXISTING FACILITY OPERATORS, OTHER CONTRACTORS, SUBCONTRACTORS, THE CITY AND STATE AND FEDERAL AUTHORITIES.
THE DRAWINGS ARE DIAGRAMMATIC AND DO NOT NECESSARILY SHOW ALL FEATURES OF THE REQUIRED WORK. PROVIDE ALL LABOR, EQUIPMENT AND MATERIALS REQUIRED FOR A COMPLETE, AND CODE COMPLIANT SYSTEM. VERIFY EXISTING FIELD CONDITIONS PRIOR TO STARTING CONSTRUCTION. IMMEDIATELY CONTACT THE ENGINEER FOR CLARIFICATION OF QUESTIONABLE ITEMS OR APPARENT CONFLICTS.
ALL FEATURES OF THE WORK ARE NEW AND TO BE FURNISHED AND INSTALLED BY THE CONTRACTOR UNLESS SPECIFICALLY INDICATED AS EXISTING. INSTALL ALL MATERIALS AND EQUIPMENT IAW MANUFACTURER'S RECOMMENDATIONS, INSTRUCTIONS, AND INSTALLATION DRAWINGS, UNLESS OTHERWISE INDICATED ON THE DRAWINGS.
THE SPECIFICATION OF A NAME BRAND PRODUCT FOLLOWED BY THE "OR EQUAL" PHRASE IS DONE MERELY TO ESTABLISH THE MINIMUM LEVEL OF QUALITY OF MATERIALS AND EQUIPMENT REQUIRED AND IS NOT A PRODUCT ENDORSEMENT. SUBMIT ANY PROPOSED SUBSTITUTIONS FOR REVIEW AND APPROVAL, UNLESS "NO SUBSTITUTIONS" IS SPECIFIED.
FACILITY DESIGN IS IAW THE 2012 INTERNATIONAL FIRE CODE, STATE OF ALASKA FIRE AND SAFETY REGULATIONS ADMINISTRATIVE CODES 13 AAC 50, 13 AAC 55, AND THE MEMORANDUM OF AGREEMENT BETWEEN THE AEA AND THE STATE OF ALASKA FIRE MARSHALL AT THE TIME OF DESIGN.
CONTRACTOR TO PROVIDE SIGNAGE IAW THE SIGN SCHEDULE, AND AS IDENTIFIED ELSEWHERE IN THE DRAWINGS.
PERFORM WORK WITH SKILLED CRAFTSMEN SPECIALIZED IN SAID WORK. INSTALL ALL MATERIALS IN A NEAT, ORDERLY, AND SECURE FASHION, AS REQUIRED BY THE DRAWINGS AND SPECIFICATIONS AND STANDARDS OF GOOD WORKMANSHIP.
WHERE PIPE SUPPORTS ARE NOT SHOWN THEY SHALL BE SPACED A MAXIMUM OF 10 FEET ON CENTER IAW THE 2012 UPC.
SCHEDULE AND COORDINATE CONSTRUCTION ACTIVITIES SUCH THAT COMPLETE AND OPERABLE BULK FUEL (STORAGE AND RETAIL DISPENSING SYSTEMS) ARE MAINTAINED AT ALL TIMES.
CONTRACTOR SHALL MAINTAIN A "RECORD" SET OF DRAWINGS TO REFLECT FIELD CHANGES THROUGHOUT CONSTRUCTION. RECORD CONSTRUCTION DRAWINGS SHALL BE SUBMITTED TO ENGINEER AT COMPLETION OF THE PROJECT.
ALL WORK SHALL BE PERFORMED IAW ALASKA DEPARTMENT OF ENVIRONMENTAL CONSERVATION, AND STATE AND FEDERAL OCCUPATIONAL HEALTH AND SAFETY REGULATIONS.
IF ANY ARCHAEOLOGICAL, CULTURAL OR PALEONTOLOGY RESOURCES ARE DISCOVERED AS A RESULT OF CONSTRUCTION ACTIVITIES, CONTRACTORS SHALL STOP ALL WORK THAT WOULD DISTURB SUCH RESOURCES AND CONTACT THE ENGINEER

ABBREVIATIONS

Table with 4 columns: Abbreviation, Description, Abbreviation, Description. Includes entries like ADEC (ALASKA DEPARTMENT OF ENVIRONMENTAL CONSERVATION), ADOT (ALASKA DEPARTMENT OF TRANSPORTATION), LF (LINEAR FEET), etc.

TESTING, STARTUP AND COMMISSIONING PROCEDURES

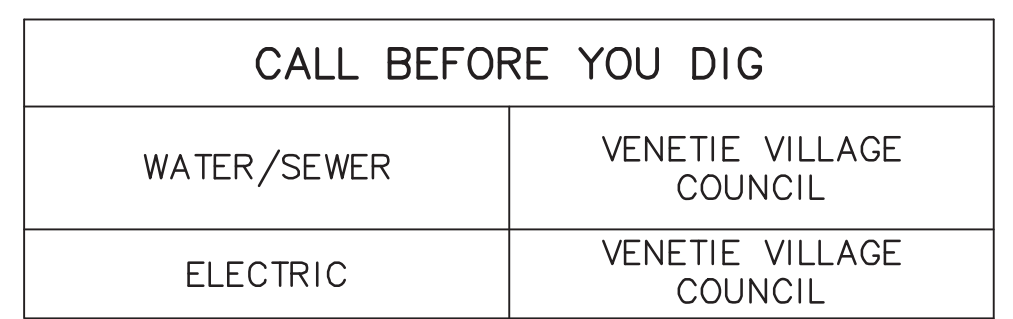
- CONTRACTOR SHALL PERFORM SYSTEM TESTING, STARTUP AND COMMISSIONING IN ACCORDANCE WITH THE PROCEDURES LISTED HERE, THE SPECIFICATIONS, AND IN ACCORDANCE WITH MANUFACTURER INSTRUCTIONS. LEAVE ALL WORK SITES IN AN ORDERLY CONDITION CONSISTENT WITH THAT FOUND UPON ARRIVAL.
PRESSURE TEST ALL PIPING AND FILL OUT AEA-APPROVED PIPELINE PRESSURE TEST REPORTS, SEE SPECIFICATIONS FOR ADDITIONAL DETAILS. THE ENGINEER OR HIS APPROVED REPRESENTATIVE SHALL BE PRESENT DURING ALL PRESSURE TESTING UNLESS DIRECTED OTHERWISE IN WRITING. DELIVER ORIGINAL REPORTS TO AEA AND A COPY TO THE ENGINEER.
TEST ALL PRESSURE RELIEF AND ANTI-SIPHON VALVES FOR PROPER OPERATION AT SPECIFIED PRESSURE.
CONTRACTOR SHALL BE PRESENT DURING INITIAL FILLING OF TANKS. UPON FILLING OF TANKS VERIFY PRODUCT LEVEL WITH GAUGING STICK AND RECALIBRATE ALL TANK GAUGES. REMOVE AND CLEAN ALL STRAINERS AND FILTERS AFTER INITIAL FILLING AND DISPENSING.
CHECK ALL PUMPS FOR PROPER ROTATION. PRIOR TO OPERATING CENTRIFUGAL PUMPS PRIME THE PUMP CAVITY WITH FUEL. IF TEMPERATURES ARE BELOW 40° F WARM PUMP BODY IN ACCORDANCE WITH MANUFACTURER'S RECOMMENDATION.
CHECK ALL CONTROL AND ALARM FUNCTIONS. MANIPULATE TANK FLOAT SWITCHES TO SIMULATE LOW AND HIGH LEVEL CONDITIONS. SET TIMING RELAYS FOR 30 SECONDS AND VERIFY TIME-OUT FUNCTION. RE-SET TIMERS TO SPECIFIED VALUES AFTER TESTING. VERIFY LATCHING AND RESET FUNCTIONS, EMERGENCY STOP FUNCTION, AND OPERATION OF ALL SIGNAL LAMPS AND HORNS. OBSERVE OPERATION OF MOTOR ACTUATED VALVES. VERIFY THAT AREA LIGHTING FUNCTIONS PROPERLY.
TEST THE BULK TRANSFER HOSE REEL, RETAIL DISPENSER, AND ALL RELATED COMPONENTS.
VERIFY ALL SIGNS, PLACARDS, AND VALVE TAGS ARE PROPERLY LOCATED. VERIFY PROPER PRODUCT COLOR CODE AND LABELING FOR ALL TANKS AND PIPING.
INSTALL PADLOCKS ON ALL VALVES AND FENCE GATES. KEY ALL LOCKS ALIKE. PROVIDE SPARE LOCKS AND KEYS AS INDICATED IN THE SPECIFICATIONS.
INSTRUCT LOCAL OPERATORS IN THE OPERATION AND MAINTENANCE OF ALL SYSTEMS. PLACE SPARE PARTS, INCINERATOR, AND SPILL RESPONSE SUPPLIES IN DESIGNATED LOCATION.

CIVIL LEGEND (GENERAL)

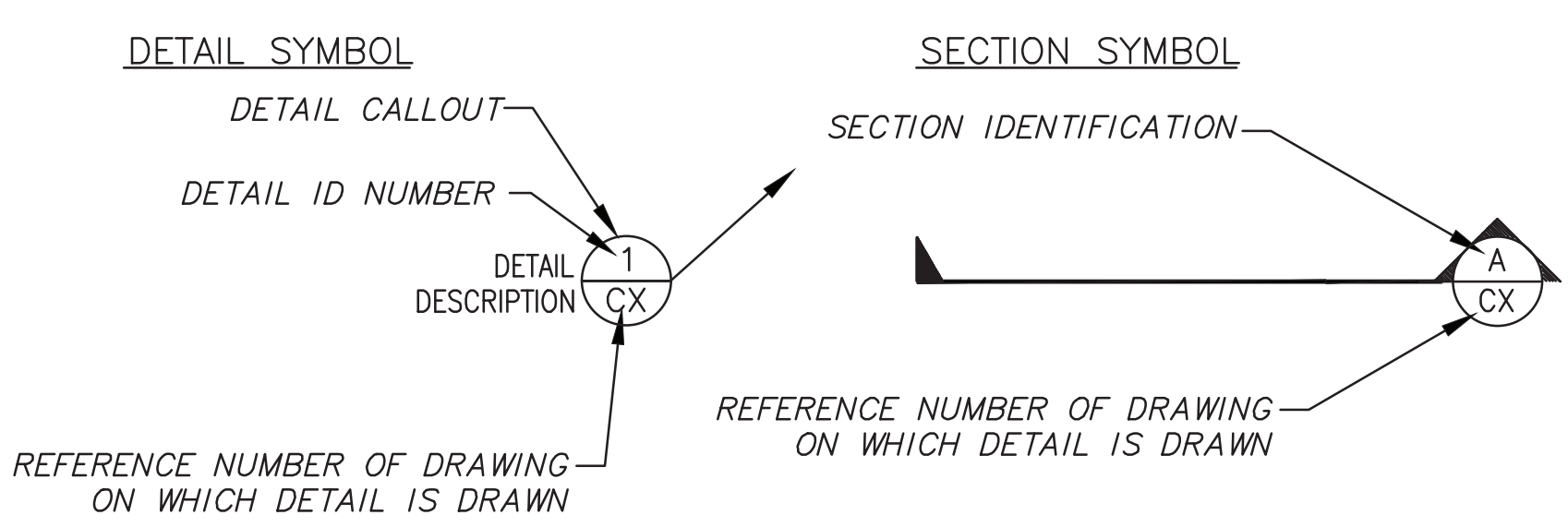
Table with 3 columns: Symbol, Description, Symbol, Description. Includes symbols for GENERAL PROPERTY BOUNDARY, CENTERLINE, CULVERT, EDGE OF GRAVEL, VEGETATION / TREELINE, TRAVELED WAY, FILL SLOPE, CUT SLOPE, FENCE, FIRE EXTINGUISHER, GROUND ELEVATION CONTOURS, BOLLARD, POWER POLE, INFORMATION / WARNING SIGN, SHEET NOTE, SURVEY MONUMENT, TEST PIT, FINISH GRADE ELEVATION, DIAMETER, MANHOLE, PERFORATED DRAINAGE BASIN, STORM DRAIN CATCH BASIN, ANTI-SIPHON VALVE, BALL VALVE, MOTOR ACTUATED BALL VALVE, CHECK VALVE, GATE VALVE, PRESSURE RELIEF VALVE, PRESSURE TEST TAP, METER, FILTER, FLEXIBLE CONNECTOR, WYE STRAINER (MESH SIZE), QUICK COUPLING, SUBMERSIBLE PUMP, CENTRIFUGAL PUMP, VERTICAL PIPE TRANSITION, REDUCER, LEVEL FLOAT SWITCH, FLOW SWITCH, MAGNESIUM ANODE, STORM DRAIN MANHOLE.

UTILITY LINE/PIPELINE DESIGNATIONS

Table with 2 columns: Symbol, Description. Includes OE UNDERGROUND ELECTRIC, G GASOLINE, D DIESEL, FM SEWER FORCE MAIN, HR HEAT RETURN, HS HEAT SUPPLY, S SANITARY SEWER, W WATER, and symbols for UNDERGROUND UTILITY LINE/PIPELINE: EXISTING, UNDERGROUND UTILITY LINE/PIPELINE: NEW, ABOVEGROUND UTILITY LINE/PIPELINE: EXISTING, ABOVEGROUND UTILITY LINE/PIPELINE: NEW, GRAVEL EDGE, VEGETATION / TREE LINE.



DETAIL/SECTION REFERENCES



Vertical sidebar containing project information: PROJECT NO. 30416.00, VENETIE, ALASKA, POWER SYSTEM UPGRADE, NOTES LEGEND AND ABBREVIATIONS, ISSUED FOR CONSTRUCTION, DATE: NOV 2021, SHEET NO. G1.1, and logos for CRW ENGINEERING GROUP, LLC and State of Alaska Professional Engineer.

File: \\10-share01\apps\BPU\BPU\Projects\001_CADD_2019\01_Working_Sets\02_Survey\03_Survey_Control\30416.00_SURVEY_CONTROL_PLATE HOLDER.dwg PLOT DATE: 11/2/2021 4:12 PM



Source: Esri, DigitalGlobe, GeoEye, Earthstar, etc.

- LEGEND**
- CONTROL POINT #
 - TEMPORARY BENCH MARK
 - BRASS CAP MONUMENT
 - 5/8" Rebar
 - AL Cap

3 SURVEY CONTROL

SCALE: GRAPHIC

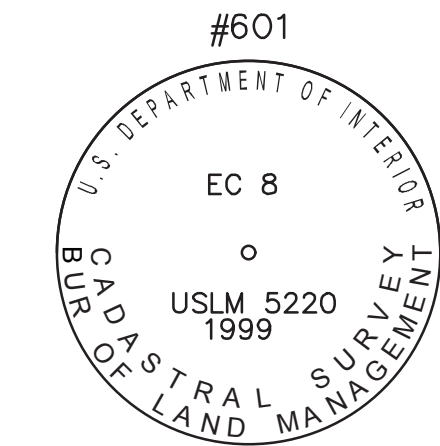
HORIZONTAL & VERTICAL CONTROL STATEMENT

CRW ESTABLISHED THE BASIS OF COORDINATES BY STATIC GPS AND PROCESSED ON NGS – ONLINE POSITION USER SERVICE (OPUS), FOR POINT #601, A 3 1/4" BRASS CAP ON A 2 1/2" STAINLESS STEEL PIPE, FLUSH WITH GROUND. PROCESSED OPUS VALUES OF LATITUDE 67° 00' 55.17644" N LONGITUDE 146° 25' 20.20364" W (NAD 83 (2011), NAVD88 GEOID 12B ELEVATION IS 594.69'.

| PID | DESIGNATION | LATITUDE | LONGITUDE |
|--------|---------------------------------|-------------------|--------------------|
| DL7644 | AB45 SAGRIVRDOT AK2007 CORS ARP | 68° 45' 37.784" N | 148° 52' 16.024" W |
| DR5991 | TLK2 TFS_WELLHEAD GPS CORS ARP | 68° 37' 40.935" N | 149° 35' 43.401" W |
| DR4396 | GCGO GILMORE CREEK GEO CORS ARP | 64° 58' 41.015" N | 147° 29' 57.841" W |

CRW POINT #601 IS THE BASIS OF COORDINATES WITH STATE PLANE ZONE 3 COORDINATES OF NORTHING 4757420.01, EASTING 1580029.00, ELEVATION 594.69'.

COORDINATE SYSTEM:
 NAME: AK83-ZONE 3
 LINEAR UNIT: US SURVEY FEET
 GEODETIC DATUM: NAD83(2011)
 ELLIPSOID: GRS80
 PROJECTION: TRANSVERSE MERCATOR



BASIS OF VERTICAL DATUM: THE BASIS OF ELEVATION IS GEOID 12B (NAVD88) OPUS SOLUTION FOR POINT #601 DETERMINED TO BE 594.69 ELEVATION. CRW USED LEICA GS14 DUAL FREQUENCY GPS RECEIVERS TO DETERMINE ELEVATIONS ON CONTROL POINTS.

NOTES

- ALL COORDINATES AND DIMENSIONS SHOWN ARE IN U.S. SURVEY FEET.
- A FIELD SURVEY WAS CONDUCTED IN JUNE 2021.
- THE DEVELOPMENT OF THIS SURVEY CONTROL SHEET IS FOR THE NEW PROPOSED VENETIE ENERGY SYSTEM UPGRADE.
- THE SITE CONTROL SHOWN WAS ESTABLISHED DURING A JUNE SURVEY WITH METHODOLOGY DESCRIBED IN THE HORIZONTAL AND VERTICAL STATEMENT.
- CONTROL POINTS ARE SUBJECT TO SEASONAL DISTURBANCE, VERIFY HORIZONTAL COORDINATES AND VERTICAL ELEVATIONS BEFORE USE IN CONSTRUCTION TO BASIS OF COORDINATES.
- WHETHER LISTED OF NOT, ALL MONUMENTS OR PROPERTY MARKERS, CORNERS, OR ACCESSORIES, WHICH WILL BE DISTURBED OR BURIED, SHALL BE REFERENCED OR RE-ESTABLISHED IN THEIR ORIGINAL POSITION (A.S. 19.10.260) AND RECORDED (A.S. 34.65.0401).
- THE BACKGROUND INFORMATION SHOWN IS FOR ORIENTATION PURPOSES ONLY AND DOES NOT REPRESENT RIGHT-OF-WAY/BOUNDARY. SEE RECORDED PLATS, DEEDS & EASEMENTS FOR DETAILED PROPERTY INFORMATION.
- AERIAL IMAGE AND MAPPING SHOWN WHERE COLLECTED IN 2010, CONDITIONS AND IMPROVEMENTS MAY HAVE CHANGED.

| Horizontal Control | | | | | | |
|--------------------|------------|------------|------------------|--------------------|--------------------|-----------|
| Point No | Northing | Easting | Description | LATITUDE | LONGITUDE | ELEVATION |
| 601 | 4757420.01 | 1580029.00 | 3 1/4" BRASS CAP | N067° 00' 55.1764" | W146° 25' 20.2036" | 594.69 |
| 602 | 4758932.25 | 1582826.61 | 2 1/2" ALCAP | N067° 01' 10.2391" | W146° 24' 10.0252" | 603.13 |
| 603 | 4757145.58 | 1581166.55 | 5/8" REBAR | N067° 00' 52.5513" | W146° 24' 51.5218" | 601.20 |

CRW ENGINEERING GROUP, LLC
 3940 ARCTIC BLVD., SUITE 300
 ANCHORAGE, ALASKA 99503
 PHONE: (907) 582-3232
 #ACELB2-AK

PROJECT NO. **30416.00**

CITY GRID

WATER GRID

SEWER GRID

VENETIE, ALASKA

POWER SYSTEM UPGRADE

SURVEY CONTROL

PROJECT NO. -

STATUS: **ISSUED FOR CONSTRUCTION**

DATE: **NOV 2021**

| REV | DATE | DESCRIPTION | BY |
|-----|---------|-------------------------|-----|
| 0 | 11/1/21 | ISSUED FOR CONSTRUCTION | KRH |

SCALE: **1" = 100'**

DESIGNED BY

DRAWN BY

CHECKED BY

APPROVED BY

SHEET NO. G1.2



PHOTO # 1 : TANK FARM SITE AT VENETIE AIRPORT, SUMMER 2021

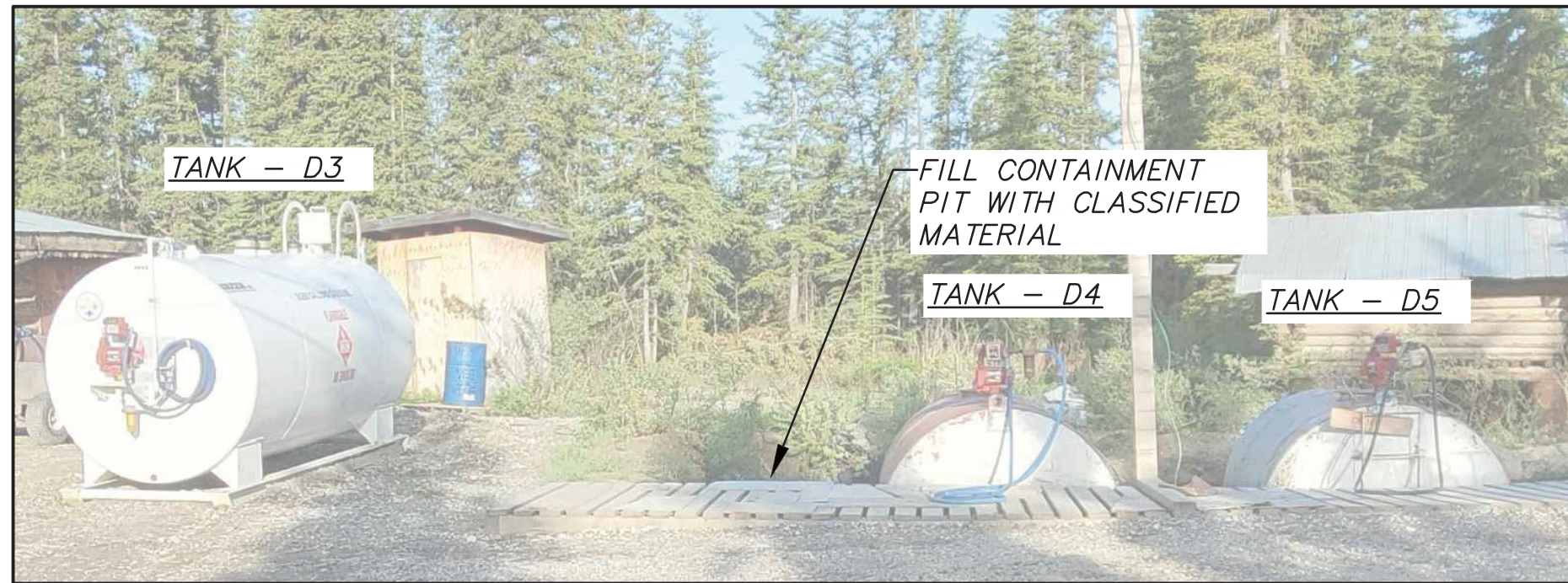


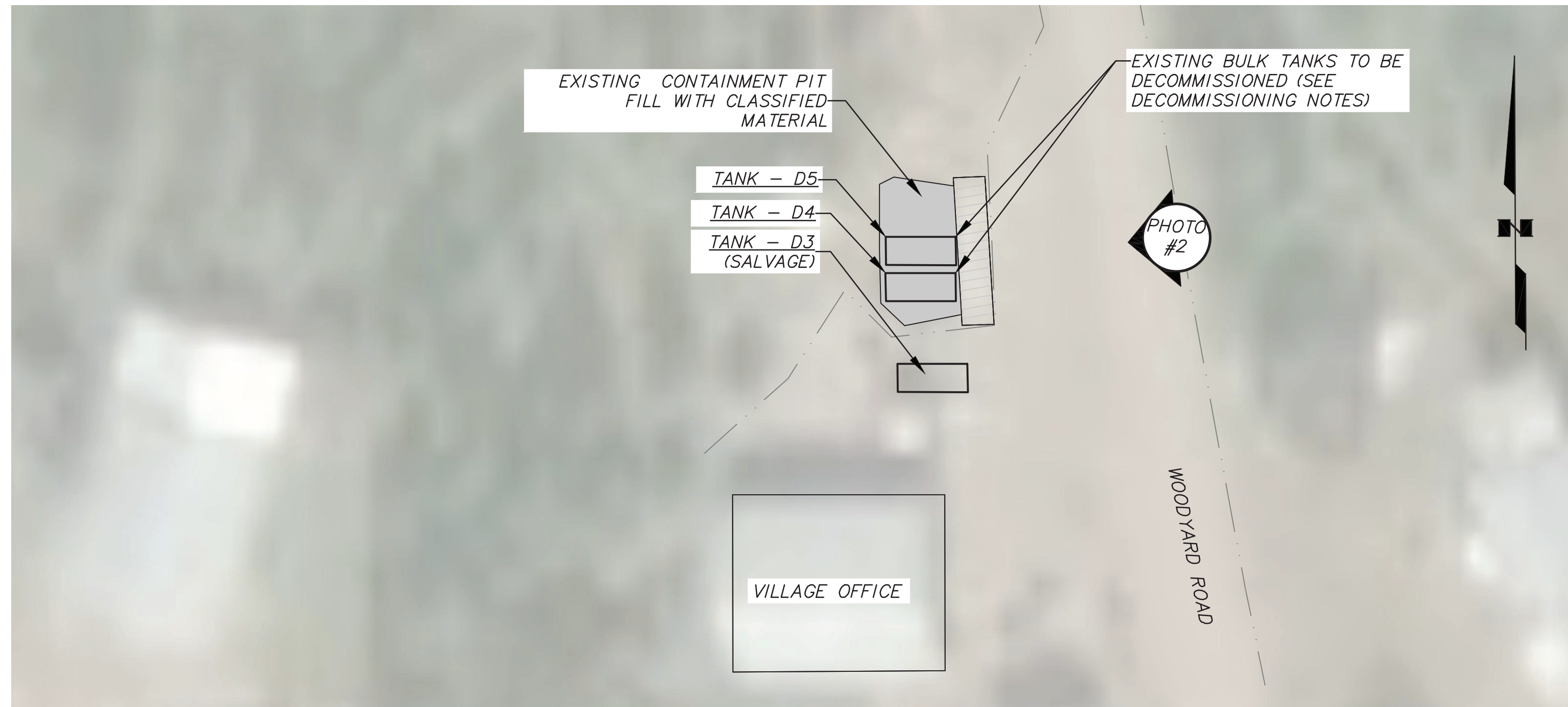
PHOTO # 2 : EXISTING RETAIL DISPENSING STATION, SUMMER 2021



1

TANK FARM SITE DECOMMISSIONING PLAN

SCALE: GRAPHIC



2

RETAIL DISPENSER SITE DECOMMISSIONING PLAN

SCALE: GRAPHIC

GENERAL NOTES:

1. THE PROJECT SITES MAY CONTAIN MISCELLANEOUS DEBRIS INCLUDING CONNEXES, OLD CONSTRUCTION EQUIPMENT, CONSTRUCTION MATERIALS ETC. CONTRACTOR SHALL COORDINATE WITH AEA/VILLAGE AS NECESSARY TO RELOCATE DEBRIS THAT INTERFERES WITH PROPOSED IMPROVEMENTS TO APPROVED OFFSITE LOCATION AT NO ADDITIONAL COST.
2. CONTRACTOR DECOMMISSIONING WORK SHALL INCLUDE DECOMMISSIONING OF EXISTING TANKS AND PIPELINES AS SHOWN ON THIS SHEET AND DESCRIBED IN THE SPECIFICATIONS.
3. CONTRACTOR SHALL OBTAIN WRITTEN PERMISSION FROM OWNER PRIOR TO PROCEEDING WITH DECOMMISSIONING ITEMS. ALL RESIDUE SHALL BE DISPOSED OF IAW APPLICABLE STATE, FEDERAL AND LOCAL LAWS AND ORDINANCES.

DECOMMISSIONING NOTES:

- A. FUEL PIPELINE LOCATIONS SHOWN ARE APPROXIMATE. DECOMMISSION & DISPOSE OF ALL EXISTING ABOVE AND BELOW GRADE FUEL PIPING ASSOCIATED WITH TANKS SCHEDULED FOR DECOMMISSIONING. SEE SPECIFICATIONS FOR PROCEDURES.
- B. SEE SPECIFICATIONS FOR TANK DECOMMISSIONING REQUIREMENTS.
- C. CONTRACTOR IS RESPONSIBLE FOR COORDINATING WITH THE VILLAGE OF VENETIE PRIOR TO BEGINNING ANY DECOMMISSIONING/DEMOLITION WORK. DELIVER SALVAGED EQUIPMENT TO OWNER DESIGNATED LOCATION.
- D. CONTRACTOR SHALL PROVIDE TEMPORARY FUEL STORAGE, DISPENSING AND PIPING SYSTEMS AS NECESSARY TO PROVIDE UNINTERRUPTED FUEL SUPPLY TO THE EXISTING POWER PLANT AND RETAIL DISPENSING FACILITIES THROUGHOUT CONSTRUCTION.
- E. ALL DECOMMISSIONED PIPING, TANKS, AND FUEL SYSTEM COMPONENTS SHALL BE DISPOSED OF IAW SPECIFICATIONS.

TANK DECOMMISSIONING SCHEDULE SCHEDULE

| TANK ID | APPROX. SIZE | APPROX CAPACITY (GAL) | PRODUCT | TYPE | OWNER | NOTES |
|---------|--------------|-----------------------|----------|------------|------------------------|--------------|
| D1 | 8'X30' | 10,000 | UNKNOWN | HORIZONTAL | THE VILLAGE OF VENETIE | DECOMISSION |
| D2 | 8' X 20' | 8,000 | UNKNOWN | HORIZONTAL | THE VILLAGE OF VENETIE | DECOMISSION |
| D3 | 6'X 15' | 2,800 | UNKNOWN | HORIZONTAL | THE VILLAGE OF VENETIE | SALVAGE |
| D4 | - | 1,500 | GASOLINE | HORIZONTAL | THE VILLAGE OF VENETIE | DECOMMISSION |
| D5 | - | 1000 | DIESEL | HORIZONTAL | THE VILLAGE OF VENETIE | DECOMMISSION |

File: J:\Jababata\30416.00 Venetie BFU RPSU Project\001 CAD\2019\01 Working Set\00 General\30416.00 DECOMMISSIONING PLAN.dwg PLOT DATE: 11/2/2021 9:51 AM



| | |
|-------------|----------|
| PROJECT NO. | 30416.00 |
| CITY GRID | - |
| WATER GRID | - |
| SEWER GRID | - |

VENETIE, ALASKA
POWER SYSTEM UPGRADE
 PROJECT DECOMMISSIONING AND DEMOLITION PLAN
 PROJECT NO. -
 STATUS: ISSUED FOR CONSTRUCTION
 DATE: NOV 2021

| REV | DATE | DESCRIPTION | BY |
|-----|---------|-------------------------|-----|
| 0 | 11/1/21 | ISSUED FOR CONSTRUCTION | KRH |

| | |
|-------------|----------|
| SCALE | 1" = 20' |
| DESIGNED BY | - |
| DRAWN BY | - |
| CHECKED BY | - |
| APPROVED BY | - |

SHEET NO. **G1.3**

File: \\10-share01\JobsData\30416.00_Venetie_BFU_RPSJ_Project\001_CADD_2019\01_Working_Sat\00_General\30416.00_SPECIFICATIONS.dwg PLOT DATE: 11/2/2021 10:01 AM

| VALVE SCHEDULE | | | | |
|------------------------------|------|----------------|-------------------------------|--|
| VALVE ID | SIZE | END CONNECTION | COMMENT | |
| BALL VALVES (BV) | | | | |
| BV-1-4 | 3" | FLANGED | - | |
| BV-5 TO BV-7 | 3" | FLANGED | - | |
| PRESSURE RELIEF VALVES (PRV) | | | | |
| PRV-1, PRV- 2 | 1" | FLANGED | PRESSURE RELIEF SET AT 30 PSI | |
| PRV- 3 | 1" | FLANGED | PRESSURE RELIEF SET AT 30 PSI | |
| PRV-4 TO PRV- 7 | 1" | FLANGED | PRESSURE RELIEF SET AT 30 PSI | |
| PRV-8, PRV-9 | 1" | FLANGED | PRESSURE RELIEF SET AT 30 PSI | |
| PRV-10, PRV-11 | 1" | FLANGED | PRESSURE RELIEF SET AT 30 PSI | |
| ANTI-SIPHON VALVES (ASV) | | | | |
| ASV-1 | 2" | FLANGED | - | |
| ASV-2 | 2" | FLANGED | - | |
| CHECK VALVE (CV) | | | | |
| CV-1, CV - 2 | 3" | | - | |
| FILL LIMITING VALVES (FLV) | | | | |
| FLV-1 | 2" | FLANGED | - | |
| FLV-2 | 2" | FLANGED | - | |

| PUMP SCHEDULE | | | | |
|-------------------|-------------|----------|--------------|------------|
| PUMP NAMEPLATE ID | TYPE | PRODUCT | LOCATION | MOTOR (HP) |
| P-1 | CENTIFUGAL | GASOLINE | PUMP CABINET | |
| P-2 | CENTIFUGAL | DIESEL | PUMP CABINET | |
| P-3 | SUBMERSIBLE | DIESEL | TANK4A | 3/4 |
| P-4 | SUBMERSIBLE | GASOLINE | TANK 4B | 3/4 |

| TANK SCHEDULE | | | | | |
|----------------|---------------|---------------|--------------------------------|--------------------------------------------|------------------------|
| TANK ID | SIZE (NOTE 2) | CAPACITY | PRODUCT | TYPE | OWNER |
| T1 | 8' X22' | 8,000 GALLONS | DIESEL | UL 142 - SINGLE WALL | THE VILLAGE OF VENETIE |
| T2 | 8' X22' | 8,000 GALLONS | DIESEL | UL 142 - SINGLE WALL | THE VILLAGE OF VENETIE |
| T3 | 8' X21.5' | 5,00 GALLONS | GASOLINE | UL 142 - SINGLE WALL | THE VILLAGE OF VENETIE |
| T4 (4A -4B) | 8' X21.5' | 5,00 GALLONS | HALF GASOLINE & HALF DIESEL | UL 2085 - DUAL COMPARTMENT PROTECTED | THE VILLAGE OF VENETIE |

NOTES:

- SEE SPECIFICATIONS FOR ADDITIONAL COMPONENT REQUIREMENTS.
- CONTRACTOR SHALL VERIFY TANK AND EQUIPMENT DIMENSIONS ARE COMPATIBLE WITH AIR FREIGHT SIZE AND WEIGHT RESTRICTIONS PRIOR TO BIDDING. IMMEDIATELY ALERT ENGINEER IF DIMENSIONAL MODIFICATIONS ARE REQUIRED.

| MISCELLANEOUS COMPONENT SCHEDULE | | | |
|----------------------------------|----------|----------------|---------|
| COMPONENT ID | SIZE | END CONNECTION | COMMENT |
| STRAINERS (S) | | | |
| S-1, S-2 | 3" | FLANGED | - |
| S-2, S-3 | 2" | FLANGED | - |
| FLEX CONNECTS (FC) | | | |
| FC-1 TO FC-3 | 3"X18" | FLANGED | - |
| FC-4 TO FC-7 | 2"X18" | FLANGED | - |
| FC-8 TO FC-9 | 1.5"X18" | FLANGED | - |
| FC-10 TO FC-11 | 2"X18" | FLANGED | - |
| QUICK COUPLER (QC) | | | |
| QC-1 & 2 | 3" | FLANGED | - |
| QC-3 & 4 | 2" | THREADED | - |

| SPILL RESPONSE EQUIPMENT | |
|-----------------------------------|-------------------------------------------------------------------------------------------------------|
| QUANTITY | ITEM/DESCRIPTION |
| ABSORBENT MATERIAL AND CONTAINERS | |
| 3 EA | OVERPACK DRUMS, 95 GALLON POLY |
| 1 EA | OPEN-TOP DRUM, 55 GALLON, METAL |
| 2EA | ABSORBENT ROLL, MIN 30"x140', MIN ABSORB 50 GAL/BALE |
| 2EA | ABSORBENT PADS, MIN 16"x20", 100 PIECES EA, MIN ABSORB 24 GAL.BALE |
| 6EA | ABSORBENT BOOM, MIN 4" x40', MIN 100 GAL/40' |
| 2EA | ABSORBENT SWEEP, 19"x100', MIN ABSORB 25 GAL/BALE |
| PERSONAL PROTECTIVE EQUIPMENT | |
| 4 PARI | GLOVES, NITRILE AF18 CHEM-RESITS, PAIRS |
| 4 EA | TYVEK SUITS, XL POLETHYLENE COATED |
| 4 EA | GOOGLES |
| 4 EA | HARDHATS |
| RECOVERY EQUIPMENT | |
| 2 EA | 500 GALLON FOLD-A-TANK |
| 1 EA | 2-INCH PORTABLE CENTRIFUGAL PUMP, GAS-POWERED GARMAN RUPP #82D1-8-X RATED AT 160 GPM WITH 2" CAMLOCKS |
| | (PRE-APPROVED ALTERNATE OPTION #1: MARLOW 2AM32-P RATED AT 120 GPM WITH2" CAMLOCKS) |
| | (PRE-APPROVED ALTERNATE OPTION #2: HOMELITE #320 RATED AT 140 GPM WITH2" CAMLOCKS) |
| 1 EA | DISHCHARGE HOSE WITH 2" CAMLOCKS. 100' TOTAL LENGTH |
| 1 EA | SUCTION HOSE WITH 2" CAMLOCKS, 50' TOTAL LENGTH |
| 2 EA | SHOVEL |
| 2 EA | RAKE |
| 2 ROLL | GARBAGE/DISPOSAL BAGS |
| MISCELLANEOUS | |
| 1 EA | SMART ASH INCINERATOR |
| 1 EA | CONNEX, 20 FOOT, LOCKABLE, (LIKE NEW CONDITION) |
| 10 EA | PADLOCKS, KEYED-ALIKE |



PROJECT NO. 30416.00
 CITY GRID
 WATER GRID
 SEWER GRID

VENETIE, ALASKA
POWER SYSTEM UPGRADE
 COMPONENT SCHEDULES

STATUS: ISSUED FOR CONSTRUCTION
 DATE: NOV 2021

| REV | DATE | DESCRIPTION | BY |
|-----|---------|-------------------------|-----|
| 0 | 11/1/21 | ISSUED FOR CONSTRUCTION | KRH |

NOTES:

1. INSTALL PORTABLE FIRE EXTINGUISHERS AT LOCATIONS SHOWN. PROVIDE TWO SPARES. EXTINGUISHERS MOUNTED OUTSIDE SHALL BE WITHIN APPROVED WEATHER PROOF ENCLOSURES.
2. THERE ARE NO KNOWN PROPERTY LINES AT THE PROPOSED PROJECT SITES. THE TANK FARM LOCATION WAS ESTABLISHED IN REFERENCE TO THE "BUILDING RESTRICTION LINE" DESIGNATED ON THE AIRPORT LAYOUT PLAN.

SETBACK/SEPARATION REQUIREMENTS:

THE PROPOSED TANK FARM AND RETAIL DISPENSING TANK WILL PERFORM - BULK STORAGE AND RETAIL DISPENSING FOR THE VILLAGE OF VENETIE. ALL TANKS ARE INSTALLED ABOVE GROUND. TO COMPLY WITH THE REQUIREMENTS OF THE 2012 INTERNATIONAL FIRE CODE, THE 2018 ALASKA ENERGY AUTHORITY/DIVISION OF FIRE PREVENTION MEMORANDUM OF AGREEMENT, AND STATE OF ALASKA REGULATIONS, THE FOLLOWING MINIMUM SETBACKS ARE REQUIRED:

- 10' FROM THE DISPENSER TO ALL BUILDINGS AND PROPERTY LINES.
- 30' FROM 751-12,000 GAL BULK STORAGE TANKS TO THE NEAREST PROPERTY LINE WHICH IS OR CAN BE BUILT UPON.
- 25' FROM THE BULK TRANSFER HOSE STAND TO THE NEAREST TANK, THE NEAREST IMPORTANT BUILDING, THE NEAREST PROPERTY LINE WHICH IS OR CAN BE BUILT UPON, COMBUSTIBLE MATERIALS, AND FIXED SOURCES OF IGNITION.

WARNING SIGNS & INFORMATION PLACARD SCHEDULE:

PROVIDE ALL SIGNS INDICATED IN THE SCHEDULE BELOW, QUANTITY & LOCATION AS INDICATED ON THE DRAWINGS. ALL SIGNS SHALL BE CONSTRUCTED FROM 0.08" ALUMINUM PLATE, AND SIZED IAW 2012 IFC. SIGN LETTERING IS SHOWN BELOW IN QUOTATIONS. PROVIDE 3/16" HOLES IN ALL FOUR CORNERS. PROVIDE NON-REFLECTIVE VINYL BACKGROUND, 3M 3650-10, WITH 3M SERIES 225 HIGH PERFORMANCE VINYL LETTERS, ONE SIDE ONLY, COLOR AS INDICATED. ATTACH TO FENCING WITH GALVANIZED HOG RINGS OR STAINLESS STEEL CABLE TIES. SIGNAGE PLACED DIRECTLY ON TANKS SHALL CONSIST OF HIGH QUALITY ADHESIVE BACK DECALS OR PAINTED STENCILS.

WARNING SIGNS - RED LETTERING ON WHITE BACKGROUND (3" HIGH X 1/2" STROKE LETTERS)

- 1 "DANGER FLAMMABLE LIQUIDS"
- 2 "NO SMOKING NO OPEN FLAMES"
- 3 "FLAMMABLE _____ GALLONS GASOLINE" OR "COMBUSTIBLE _____ GALLONS DIESEL", INSERT VOLUME IN GALLONS AS APPROPRIATE.

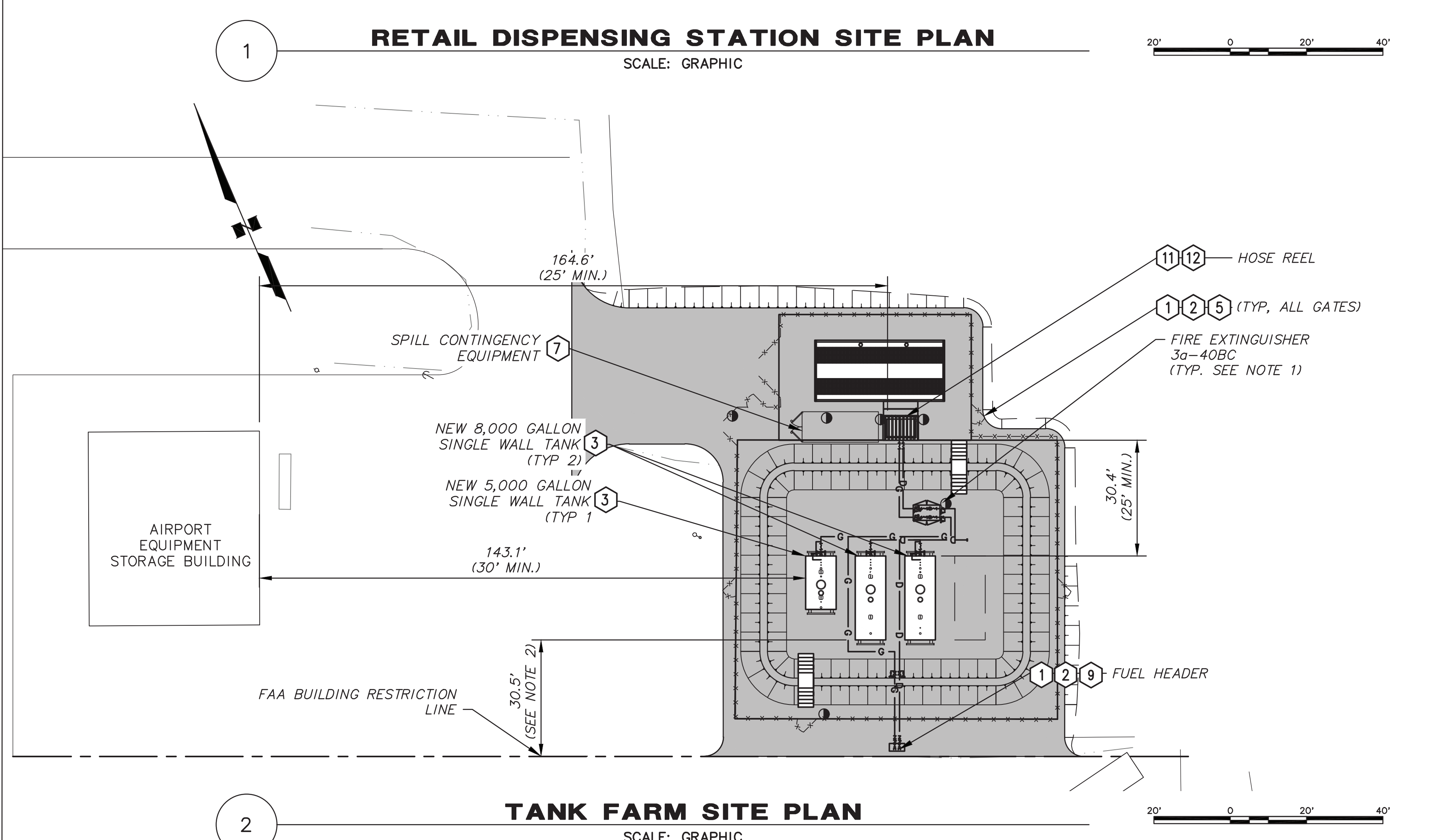
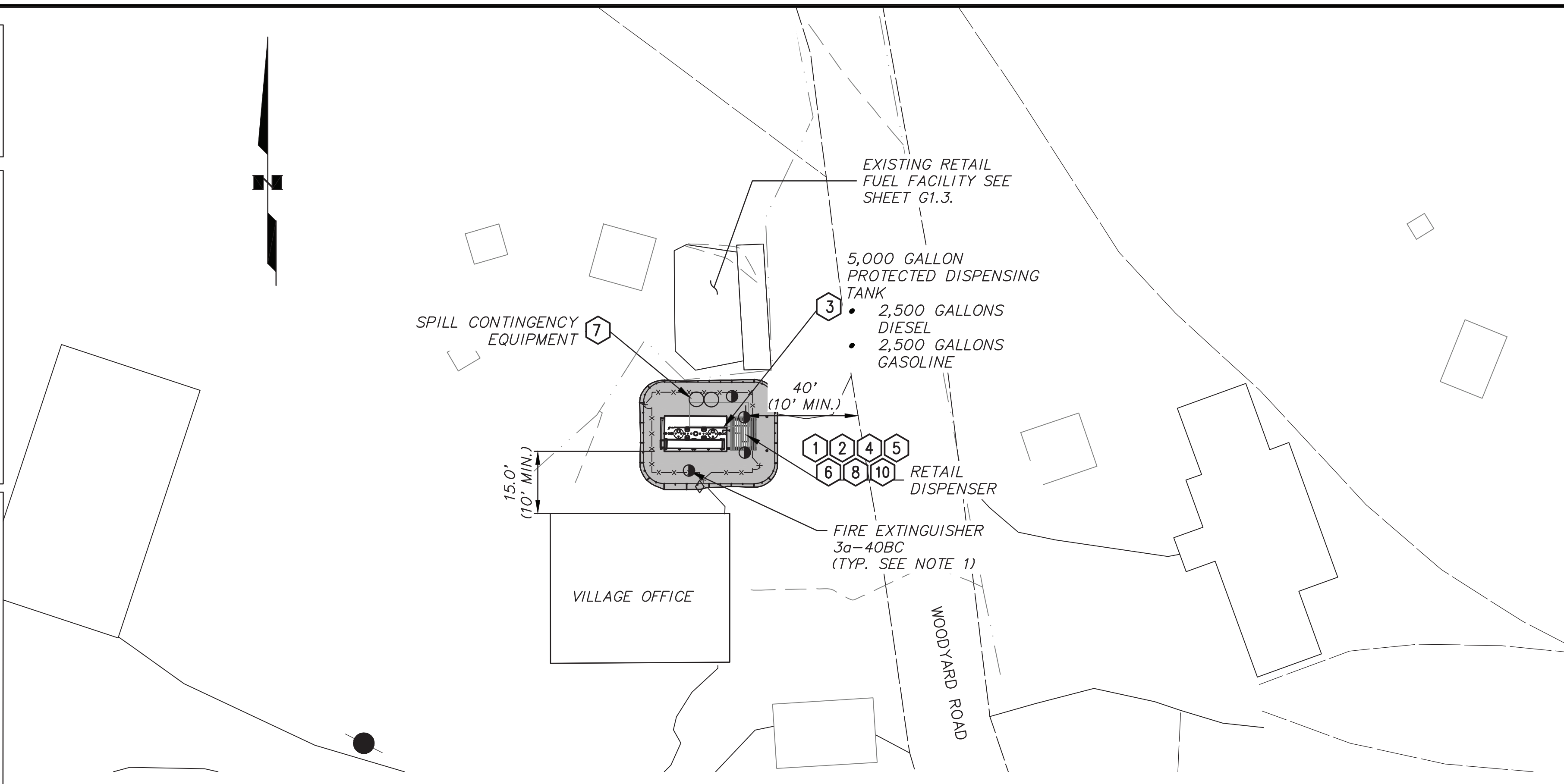
INFORMATIONAL PLACARDS - BLACK LETTERING ON WHITE BACKGROUND (2" HIGH 1/2" STROKE LETTERS)

- 4 "IMPORTANT - PRIOR TO DISPENSING:
 1. NO SMOKING.
 2. SHUT OFF MOTOR.
 3. DISCHARGE YOUR STATIC ELECTRICITY BEFORE FUELING BY TOUCHING A METAL SURFACE AWAY FROM THE NOZZLE.
 4. TO PREVENT STATIC CHARGE, DO NOT RE-ENTER YOUR VEHICLE WHILE GASOLINE IS PUMPING.
 5. IF A FIRE STARTS, DO NOT REMOVE NOZZLE - BACK AWAY IMMEDIATELY
 6. IT IS UNLAWFUL AND DANGEROUS TO DISPENSE FUEL INTO UNAPPROVED CONTAINERS
 7. NO FILLING OF PORTABLE CONTAINERS IN OR ON A MOTOR VEHICLE. PLACE CONTAINER ON GROUND BEFORE FILLING"
- 5 "IN CASE OF FIRE SPILL OR RELEASE:
 1. USE EMERGENCY SHUTOFF
 2. CONTACT TANK FARM OWNER
 3. REPORT ACCIDENT TO ADEC"
- 6 PROVIDE ADEC SPILL SIGN: CONTRACTOR TO CONTACT ADEC FOR CURRENT SPILL REPORTING PLACARD (907-269-3063)
- 7 "SPILL CONTINGENCY EQUIPMENT"
- 8 "EMERGENCY SHUTOFF" - SEE ELECTRICAL FOR SIGN LOCATIONS
- 9 "PRESSURE NOT TO EXCEED 75 PSI" (NOTE THIS SIGN SHALL BE PERMANENTLY AFFIXED TO THE BARGE HEADER SUPPORT). SEE DETAIL

INSTRUCTION PLACARDS - BLUE LETTERING ON WHITE BACKGROUND (1/2" HIGH X 3/8" STROKE LETTERS)

- 10 "RETAIL DISPENSING:
 1. SEE ATTENDANT TO PRE-PAY FOR FUEL
 2. REMOVE NOZZLE, LIFT LEVER AND BEGIN FUELING
 3. REPLACE NOZZLE AFTER FUELING
 4. SEE ATTENDANT FOR RECEIPT"
- 11 "BULK TRANSFER:
 1. SHUT OFF VEHICLE AND CONNECT GROUNDING REEL.
 2. RESET METER - SET TO DESIRED VOLUME AND OPEN METER VALVE
 3. DEPRESS "PUMP ON" BUTTON LOCATED NEAR HOSE REEL.
 4. UNWIND HOSE
 5. PLACE NOZZLE IN FUEL RECEPTACLE
 6. DEPRESS NOZZLE LEVER TO BEGIN FLOW
 7. WHEN FUELING IS COMPLETE DEPRESS "PUMP OFF" BUTTON, REWIND HOSE AND HANG UP NOZZLE"

- 12 PROVIDE PLACARDS INDICATING PRODUCT TYPE AT HOSE REEL



File: \\10-stored1_VabsData\30416.00_Venetie_BFU_RPSU_Project\001_CADD_2019\01_Working_Set\100_General\30416.00_SETBACK_AND_SIGNAGE_PLAN.dwg PLOT DATE: 11/2/2021 10:28 AM



| | |
|-------------|----------|
| PROJECT NO. | 30416.00 |
| CITY GRID | - |
| WATER GRID | - |
| SEWER GRID | - |

| | |
|--------------------------|---------------------------------|
| VENETIE, ALASKA | PROJECT NO. - |
| POWER SYSTEM UPGRADE | ISSUED FOR CONSTRUCTION |
| SETBACK AND SIGNAGE PLAN | STATUS: ISSUED FOR CONSTRUCTION |
| DATE: NOV 2021 | |

| REV | DATE | DESCRIPTION | BY |
|-----|---------|-------------------------|-----|
| 0 | 11/1/21 | ISSUED FOR CONSTRUCTION | KRH |

| | | | | | |
|-------|--------|-------------|----------|------------|-------------|
| SCALE | HOR. - | DESIGNED BY | DRAWN BY | CHECKED BY | APPROVED BY |
| | | | | | |