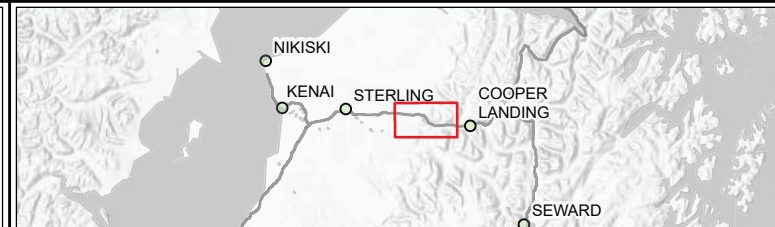
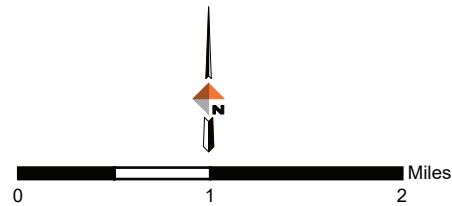


Appendix A – Mapping of Poles to Remove



- ✱ Road Access Point (RA#)
- Extent of 69kV Remaining Poles
- Administrative Boundary
- US Forest Service Land
- H Heli Pad (HA#)



Location Map

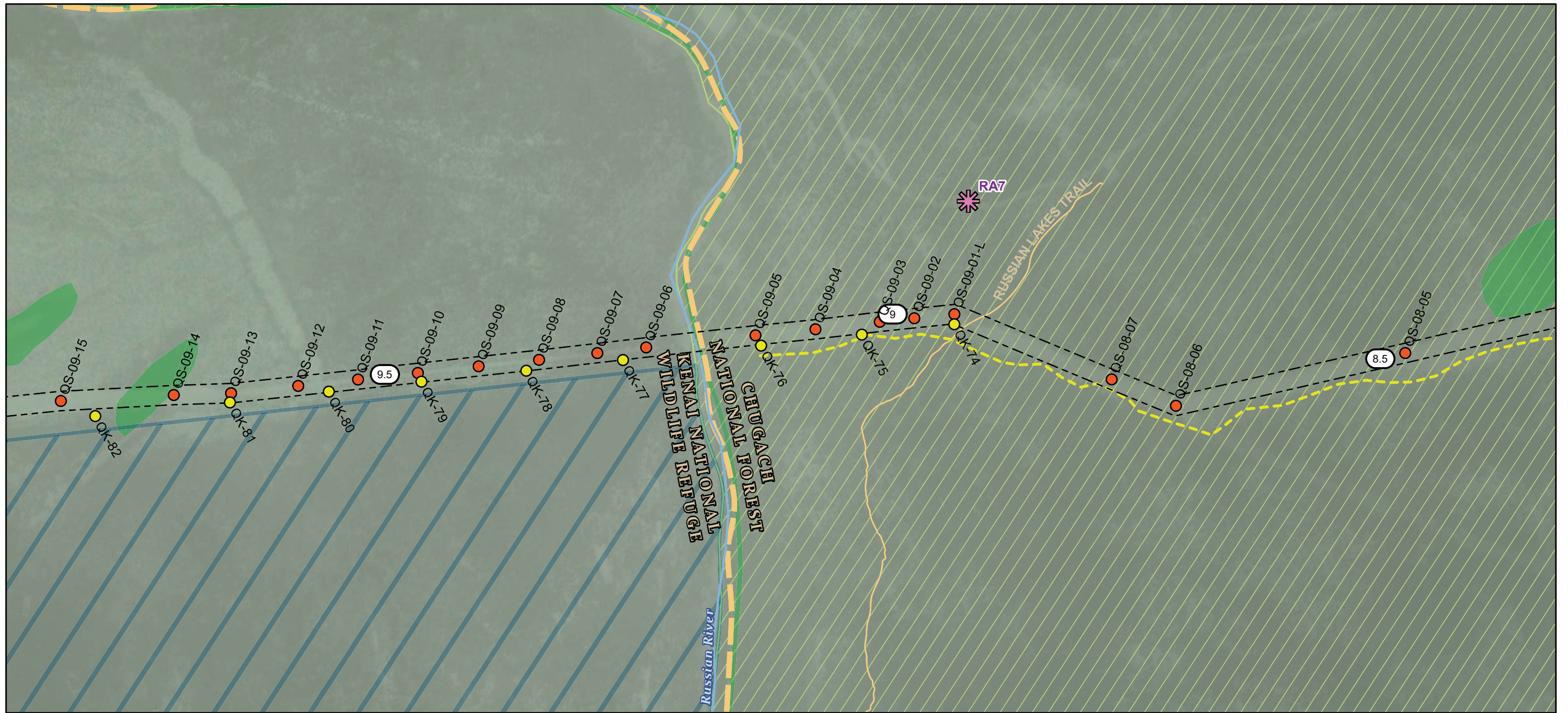
Quartz Pole Removal

DOWL ALASKA

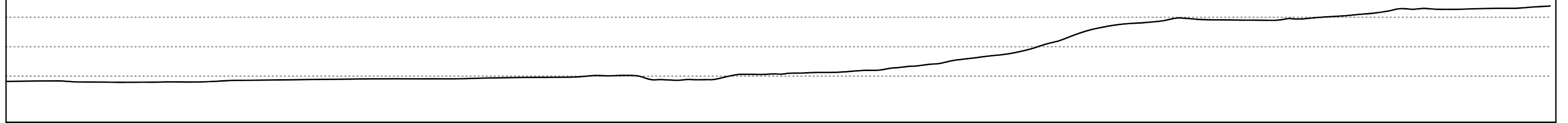
Date: September 2022

Figure A1

Service Layer Credits: Human Geography Base: State of Alaska, Esri, HERE, Garmin, FAO, NOAA, USGS, EPA
 Human Geography Label: State of Alaska, Esri, HERE, Garmin, FAO, NOAA, USGS, EPA
 Terrain: Multi-Directional Hillshade: Airbus,USGS,NGA,NASA,CGIAR,NCEAS,NLS,OS,NMA,Geodastyrrelsen,GSA,GSI and the GIS User Community
 Human Geography Detail: State of Alaska, Esri, HERE, Garmin, FAO, NOAA, USGS, EPA

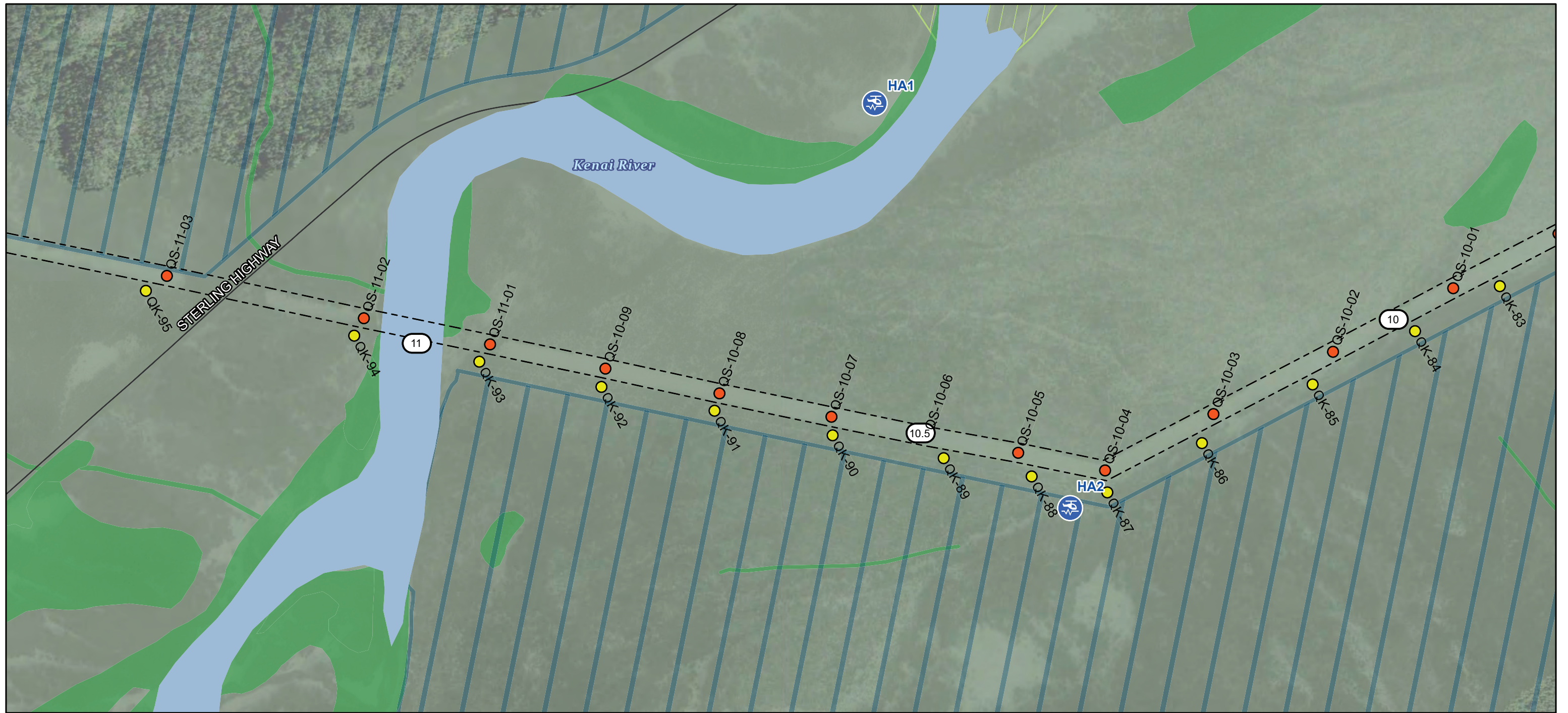


Approximate Line Profile

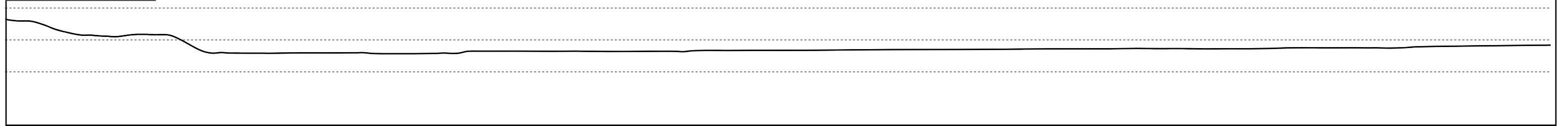


<ul style="list-style-type: none"> 69kV Remaining Pole Location 115kV Pole Location Road Access Point 	<ul style="list-style-type: none"> Line Milepost (line starts at MP 1) 115kV ROW AEA ROW Trail 	<ul style="list-style-type: none"> Trail Anadromous Stream National Wetlands Inventory 	<ul style="list-style-type: none"> US Forest Service Land Refuge Wilderness Boundary 			<p align="center">Detail</p> <p align="center">Quartz Pole Removal</p>
					<p>Date: September 2022</p>	<p align="center">DOWL ALASKA</p>
						<p align="center">Figure A2</p>

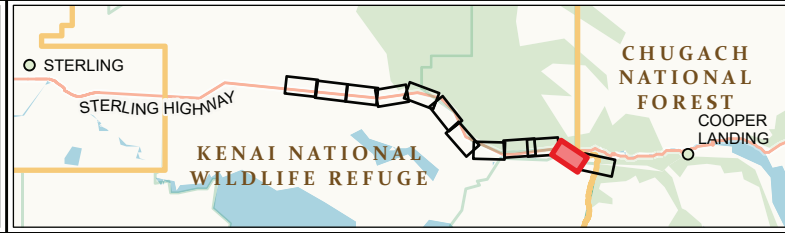
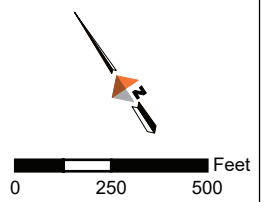
Service Layer Credits: OpenStreetMap (with Relief): Map data © OpenStreetMap contributors, Microsoft, Facebook, Inc. and its affiliates, Esri Community Maps contributors, Map layer by Esri World Imagery: Maxar, Vivid



Approximate Line Profile

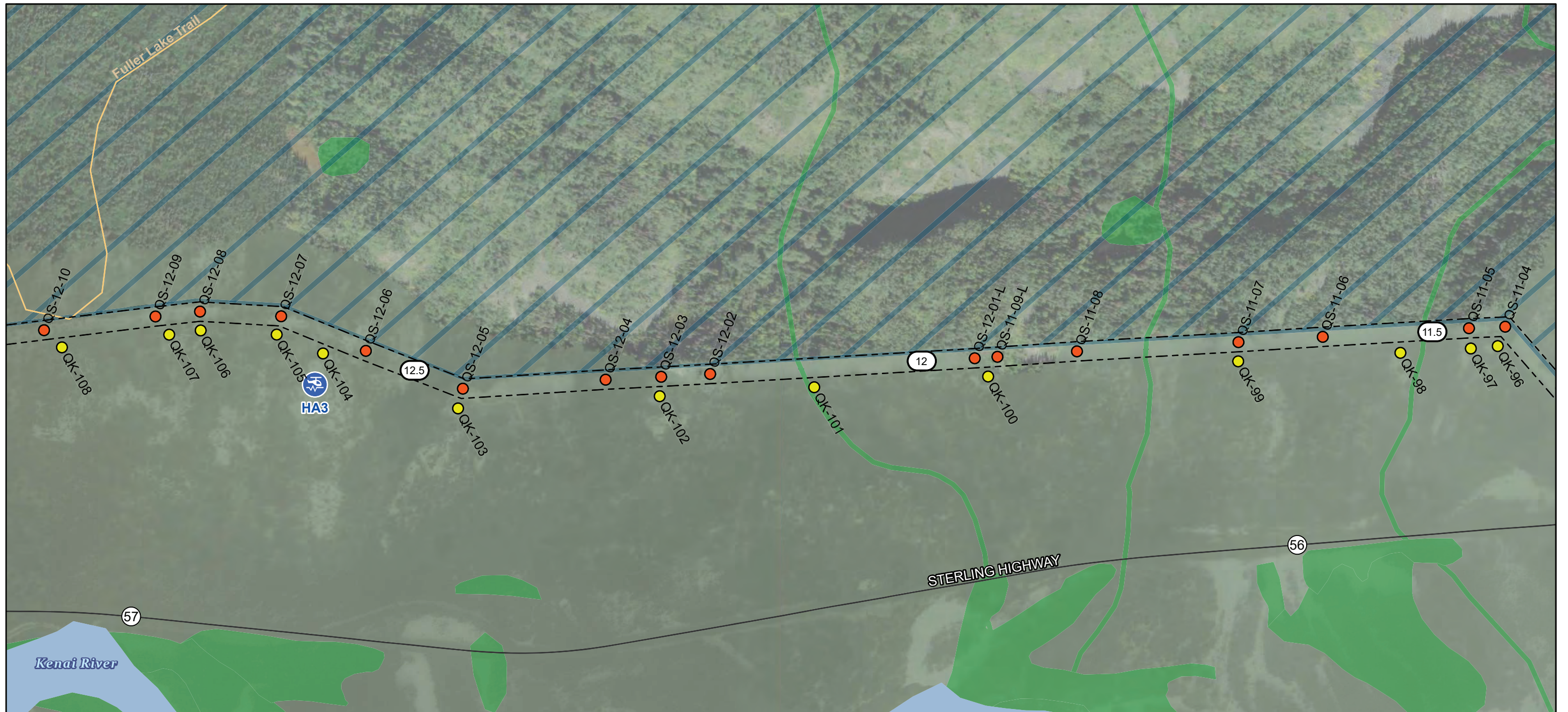


- 69kV Remaining Pole Location
- 115kV Pole Location
- Heli Pad
- # Line Milepost (line starts at MP 1)
- 115kV ROW
- Anadromous Waterbody
- National Wetlands Inventory
- US Forest Service Land
- Refuge Wilderness Boundary

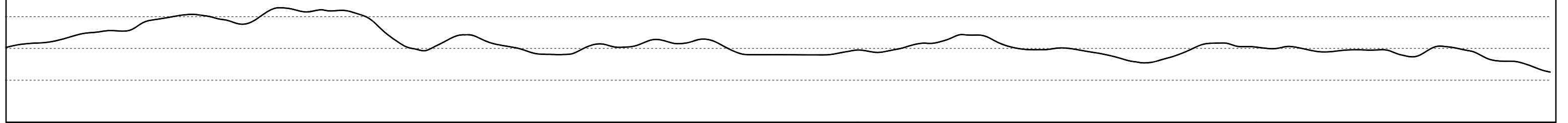


Detail	
Quartz Pole Removal	
	Date: September 2022
Figure A3	

Service Layer Credits: OpenStreetMap (with Relief): Map data © OpenStreetMap contributors, Microsoft, Facebook, Inc. and its affiliates, Esri Community Maps contributors, Map layer by Esri World Imagery: Maxar, Vivid

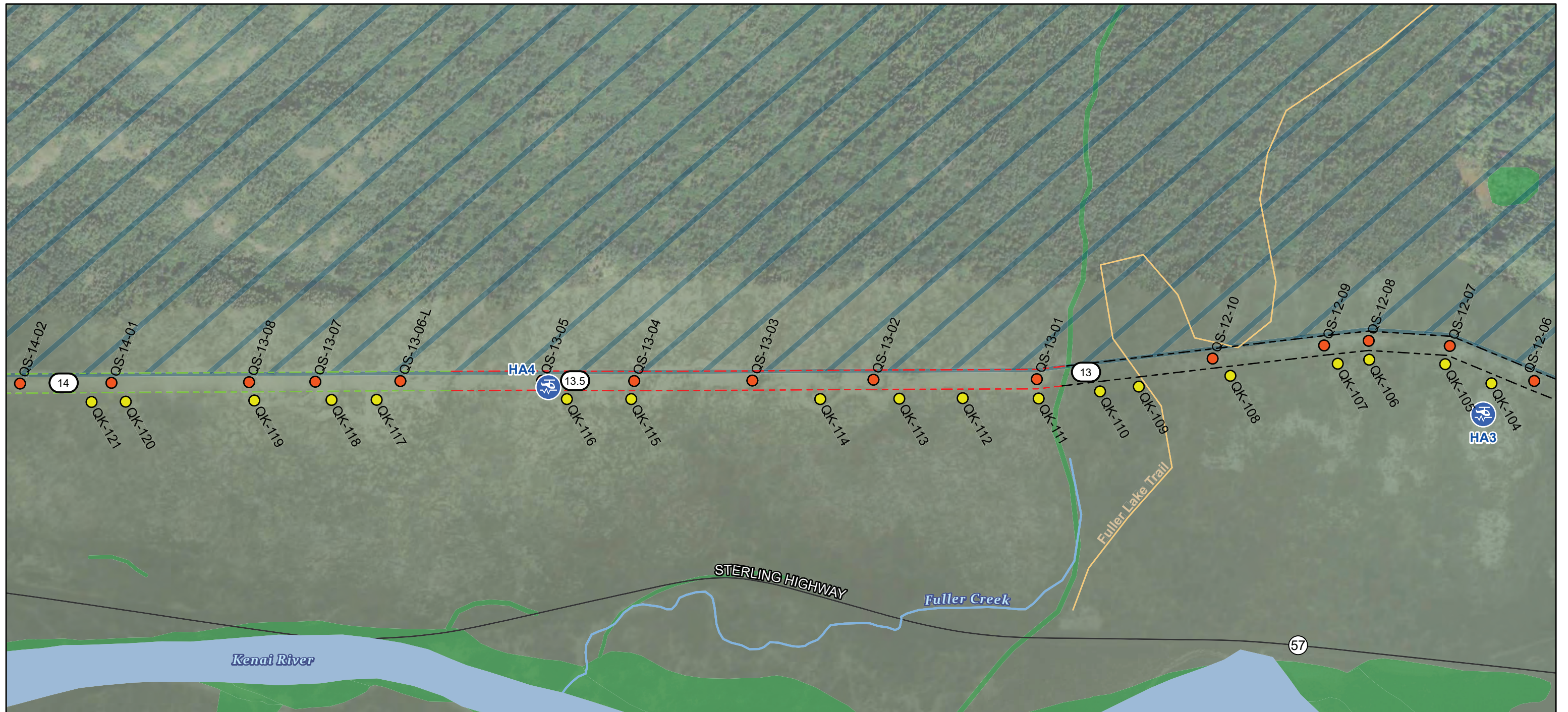


Approximate Line Profile

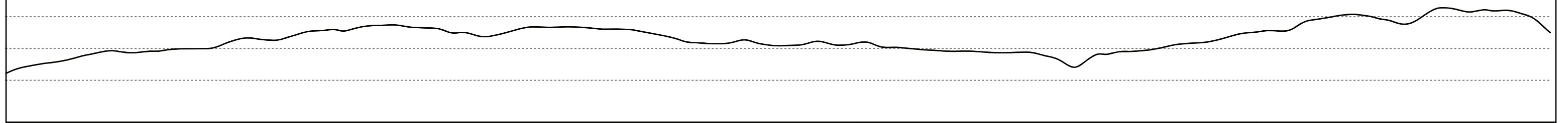


<ul style="list-style-type: none"> 69kV Remaining Pole Location 115kV Pole Location Heli Pad 	<ul style="list-style-type: none"> Line Milepost (line starts at MP 1) Sterling Highway Milepost 115kV ROW Trail 	<ul style="list-style-type: none"> Anadromous Waterbody National Wetlands Inventory Refuge Wilderness Boundary 			<p align="center">Detail</p> <p align="center">Quartz Pole Removal</p> <p align="center">Date: September 2022</p> <p align="center">Figure A4</p>
---	--	---	--	--	--

Service Layer Credits: OpenStreetMap (with Relief): Map data © OpenStreetMap contributors, Microsoft, Facebook, Inc. and its affiliates, Esri Community Maps contributors, Map layer by Esri World Imagery: Maxar, Vivid

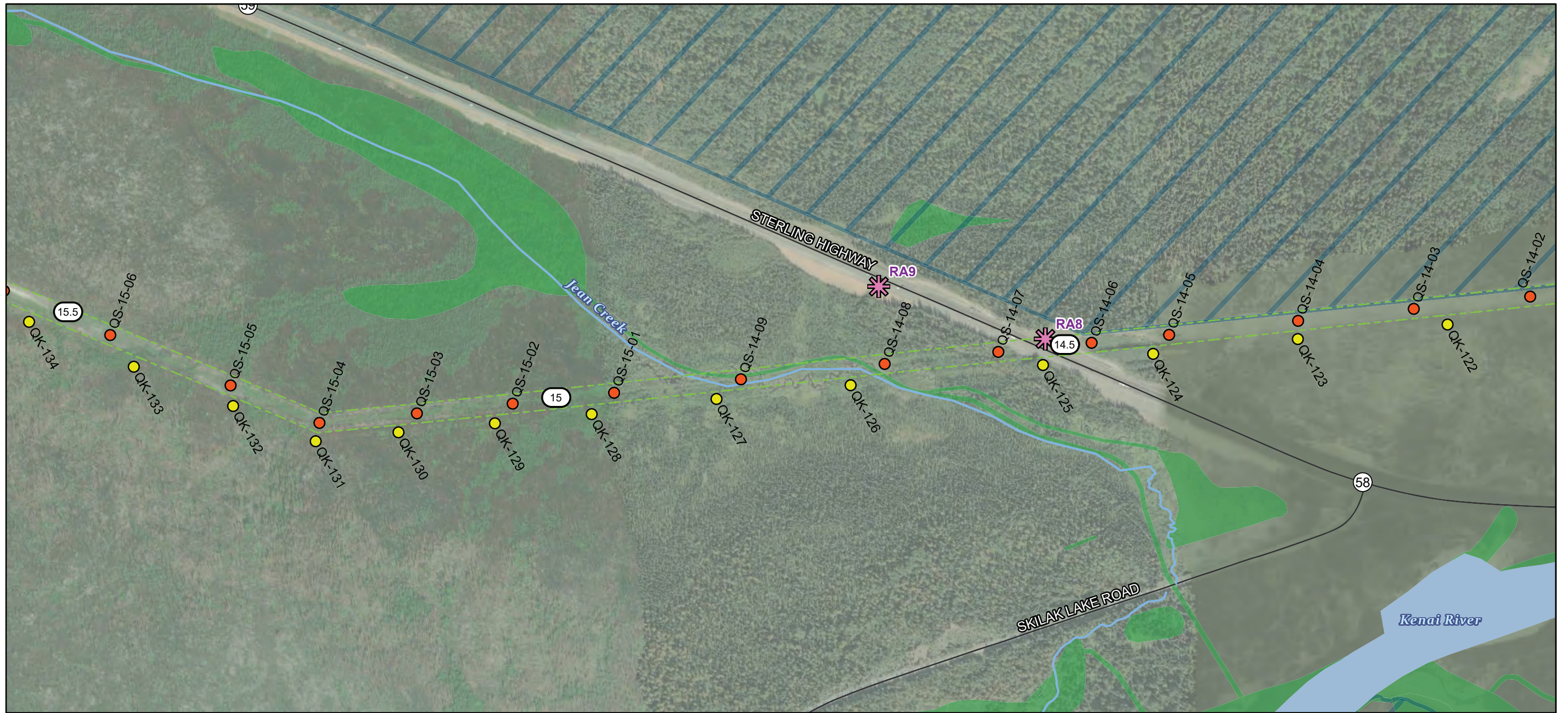


Approximate Line Profile

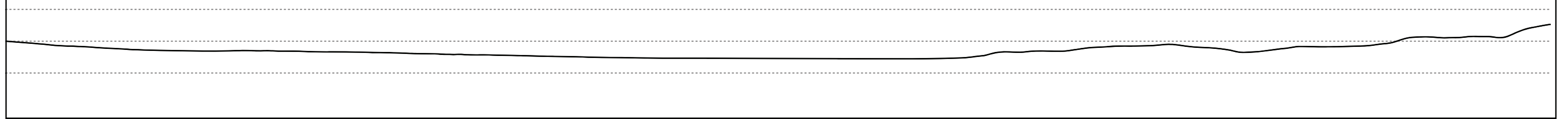


<ul style="list-style-type: none"> 69kV Remaining Pole Location 115kV Pole Location Heli Pad 	<ul style="list-style-type: none"> Line Milepost (line starts at MP 1) Sterling Highway Milepost 115kV ROW 115kV ROW (w/ access road) 	<ul style="list-style-type: none"> 115kV ROW (access road not accessible from highway) Trail Anadromous Stream Anadromous Waterbody 	<ul style="list-style-type: none"> National Wetlands Inventory Refuge Wilderness Boundary 			<p align="center">Detail</p> <p align="center">Quartz Pole Removal</p>	<p>Date: September 2022</p>
						<p align="center">Figure A5</p>	

Service Layer Credits: OpenStreetMap (with Relief): Map data © OpenStreetMap contributors, Microsoft, Facebook, Inc. and its affiliates, Esri Community Maps contributors, Map layer by Esri World Imagery: Maxar, Vivid

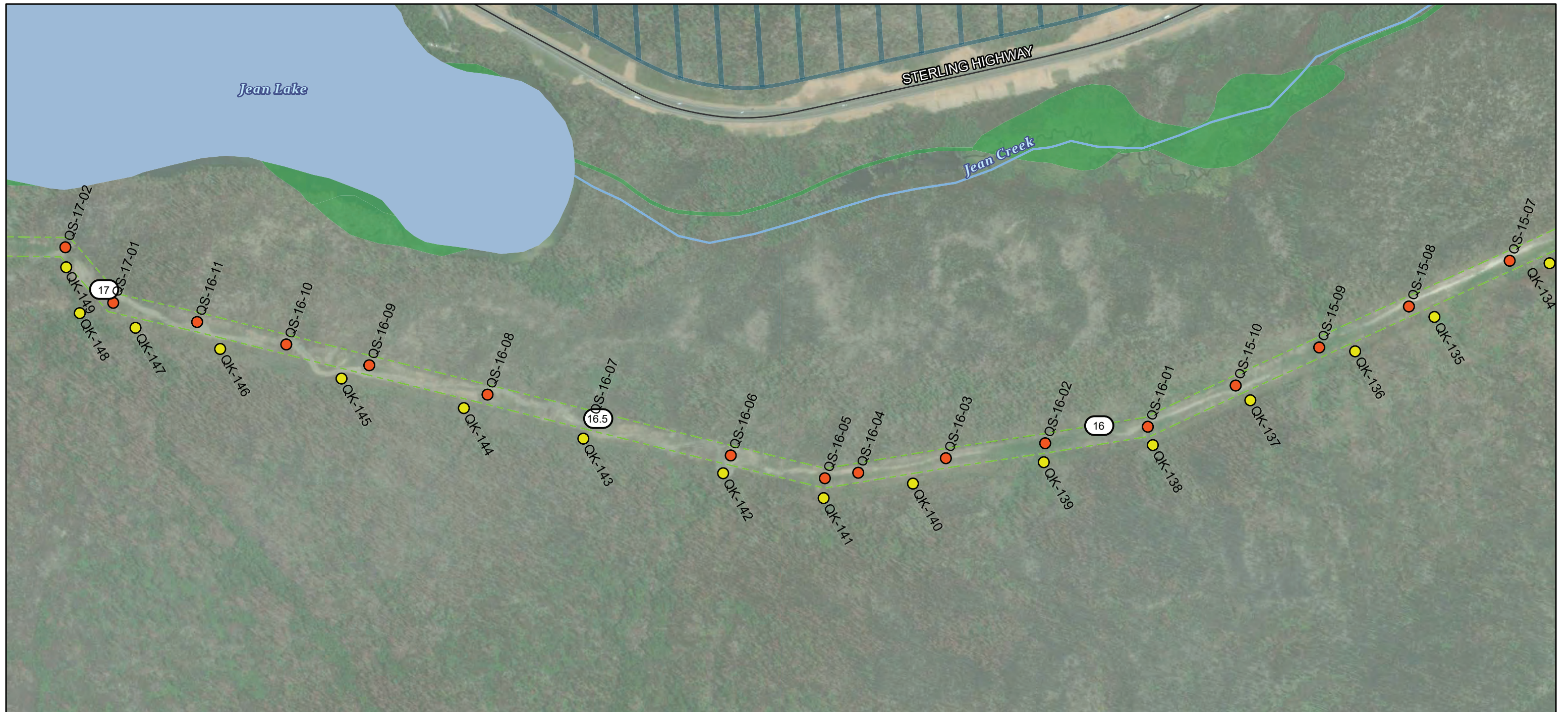


Approximate Line Profile

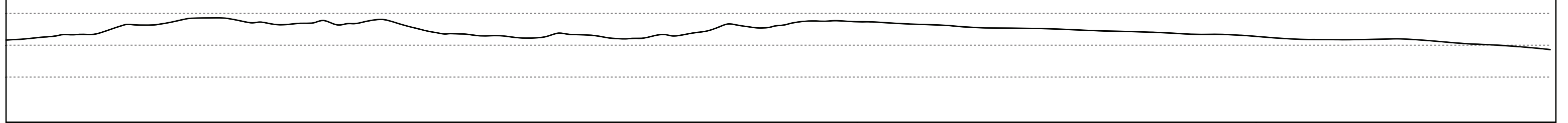


<ul style="list-style-type: none"> 69kV Remaining Pole Location 115kV Pole Location Road Access Point 	<ul style="list-style-type: none"> Line Milepost (line starts at MP 1) Sterling Highway Milepost 	<ul style="list-style-type: none"> 115kV ROW (w/ access road) Anadromous Stream Anadromous Waterbody 	<ul style="list-style-type: none"> National Wetlands Inventory Refuge Wilderness Boundary 			<p align="center">Detail</p> <p align="center">Quartz Pole Removal</p>
<p align="right">Date: September 2022</p>						
<p align="right">DOWL ALASKA Figure A6</p>						

Service Layer Credits: OpenStreetMap (with Relief): Map data © OpenStreetMap contributors, Microsoft, Facebook, Inc. and its affiliates, Esri Community Maps contributors, Map layer by Esri World Imagery: Maxar, Vivid

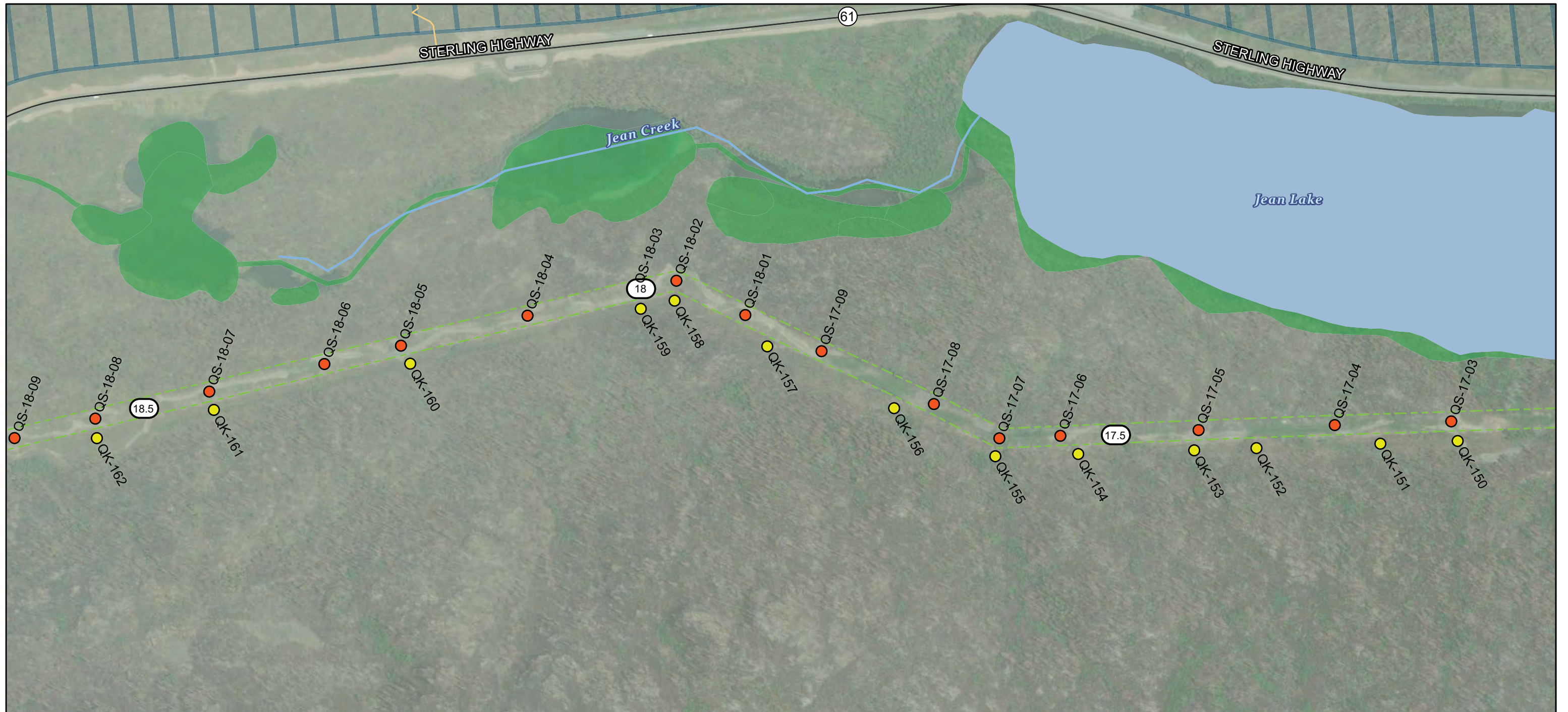


Approximate Line Profile

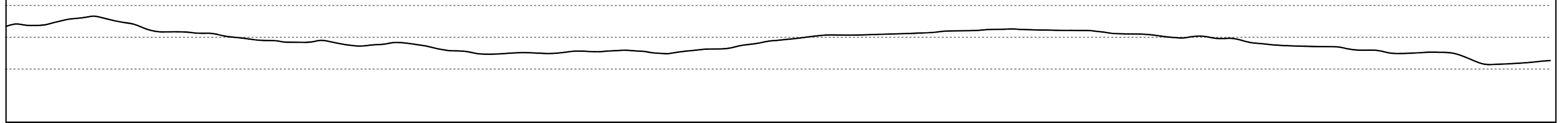


<ul style="list-style-type: none"> ● 69kV Remaining Pole Location ● 115kV Pole Location # Line Milepost (line starts at MP 1) 	<ul style="list-style-type: none"> 115kV ROW (w/ access road) Anadromous Stream Anadromous Waterbody 	<ul style="list-style-type: none"> National Wetlands Inventory Refuge Wilderness Boundary 				<p>Detail</p> <p>Quartz Pole Removal</p> <p>Date: September 2022</p> <p>Figure A7</p>	
--	--	---	--	--	--	--	--

Service Layer Credits: OpenStreetMap (with Relief): Map data © OpenStreetMap contributors, Microsoft, Facebook, Inc. and its affiliates, Esri Community Maps contributors, Map layer by Esri World Imagery: Maxar, Vivid



Approximate Line Profile

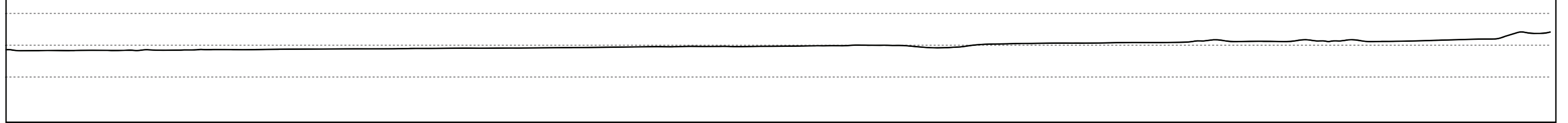


<ul style="list-style-type: none"> 69kV Remaining Pole Location 115kV Pole Location Line Milepost (line starts at MP 1) 	<ul style="list-style-type: none"> Sterling Highway Milepost 115kV ROW (w/ access road) Trail Anadromous Stream 	<ul style="list-style-type: none"> Anadromous Waterbody National Wetlands Inventory Refuge Wilderness Boundary 			<p align="center">Detail</p> <p align="center">Quartz Pole Removal</p> <p align="right">Date: September 2022</p> <p align="right">Figure A8</p>
--	---	---	--	--	--

Service Layer Credits: OpenStreetMap (with Relief); Map data © OpenStreetMap contributors, Microsoft, Facebook, Inc. and its affiliates, Esri Community Maps contributors, Map layer by Esri World Imagery: Maxar, Microsoft, Vivid

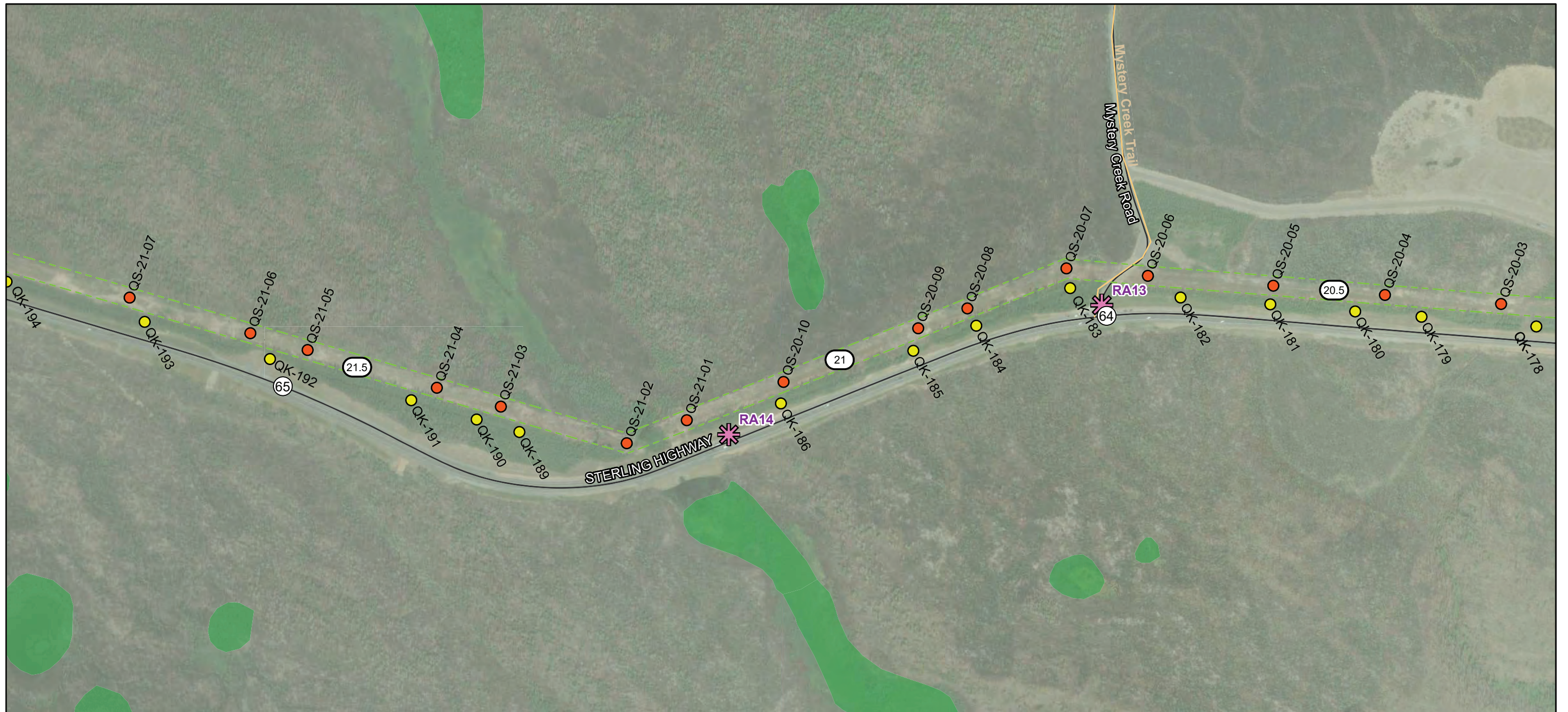


Approximate Line Profile

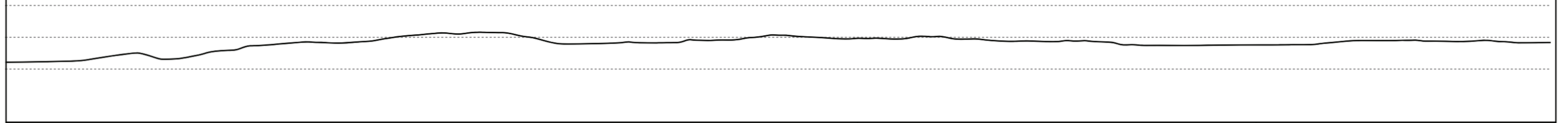


<ul style="list-style-type: none"> ● 69kV Remaining Pole Location ● 115kV Pole Location ✱ Road Access Point 	<ul style="list-style-type: none"> # Line Milepost (line starts at MP 1) # Sterling Highway Milepost 115kV ROW (w/ access road) 	<ul style="list-style-type: none"> National Wetlands Inventory Refuge Wilderness Boundary 			<p>Detail</p> <p>Quartz Pole Removal</p> <p>Date: September 2022</p> <p>Figure A9</p>
--	---	---	--	--	--

Service Layer Credits: OpenStreetMap (with Relief): Map data © OpenStreetMap contributors, Microsoft, Facebook, Inc. and its affiliates, Esri Community Maps contributors, Map layer by Esri World Imagery: Maxar, Microsoft, Vivid



Approximate Line Profile

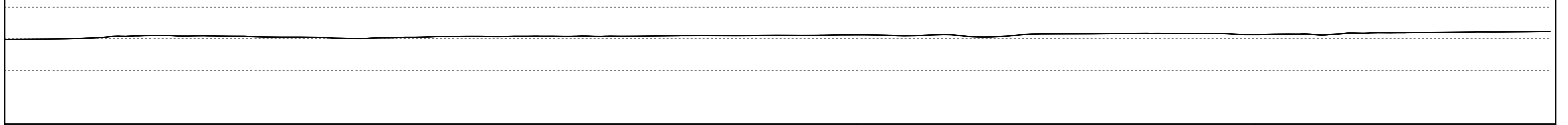


<ul style="list-style-type: none"> ● 69kV Remaining Pole Location ● 115kV Pole Location ✱ Road Access Point 	<ul style="list-style-type: none"> # Line Milepost (line starts at MP 1) # Sterling Highway Milepost 115kV ROW (w/ access road) 	<ul style="list-style-type: none"> Trail National Wetlands Inventory 			<p>Detail</p> <p>Quartz Pole Removal</p> <p>Date: September 2022</p> <p>Figure A10</p>	
--	---	--	--	--	---	--

Service Layer Credits: OpenStreetMap (with Relief); Map data © OpenStreetMap contributors, Microsoft, Facebook, Inc. and its affiliates, Esri Community Maps contributors, Map layer by Esri World Imagery; Maxar, Microsoft, Vivid



Approximate Line Profile

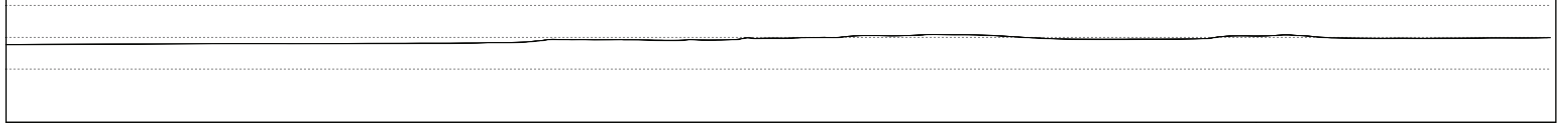


<ul style="list-style-type: none"> ● 69kV Remaining Pole Location ● 115kV Pole Location Road Access Point 	<ul style="list-style-type: none"> # Line Milepost (line starts at MP 1) # Sterling Highway Milepost 	<ul style="list-style-type: none"> 115kV ROW (w/ access road) National Wetlands Inventory 			<p>Detail</p> <p>Quartz Pole Removal</p> <p>Date: September 2022</p> <p>Figure A11</p>	
---	--	---	--	--	---	--

Service Layer Credits: OpenStreetMap (with Relief): Map data © OpenStreetMap contributors, Microsoft, Facebook, Inc. and its affiliates, Esri Community Maps contributors, Map layer by Esri World Imagery: Maxar, Microsoft, Vivid



Approximate Line Profile

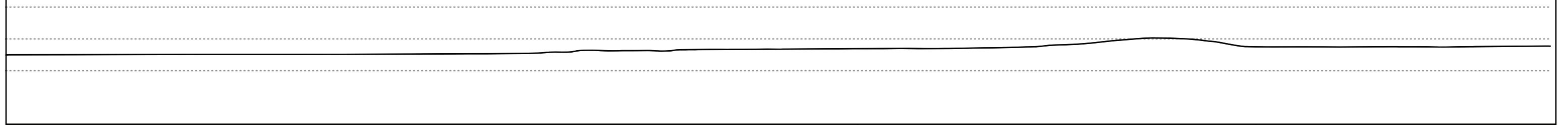


<ul style="list-style-type: none"> ● 69kV Remaining Pole Location ● 115kV Pole Location # Line Milepost (line starts at MP 1) # Sterling Highway Milepost 115kV ROW (w/ access road) National Wetlands Inventory 			<p>Detail</p> <p>Quartz Pole Removal</p> <p>Date: September 2022</p> <p>Figure A12</p>
--	--	--	---

Service Layer Credits: OpenStreetMap (with Relief): Map data © OpenStreetMap contributors, Microsoft, Facebook, Inc. and its affiliates, Esri Community Maps contributors, Map layer by Esri World Imagery: Maxar, Microsoft, Vivid



Approximate Line Profile



<ul style="list-style-type: none"> ● 69kV Remaining Pole Location ● 115kV Pole Location ✱ Road Access Point 	<ul style="list-style-type: none"> 26 Line Milepost (line starts at MP 1) 69 Sterling Highway Milepost 	<ul style="list-style-type: none"> 115kV ROW (w/ access road) National Wetlands Inventory 			<p>Detail</p> <p>Quartz Pole Removal</p> <p>Date: September 2022</p> <p>Figure A13</p>	
--	--	--	--	--	---	--

Service Layer Credits: OpenStreetMap (with Relief); Map data © OpenStreetMap contributors, Microsoft, Facebook, Inc. and its affiliates, Esri Community Maps contributors, Map layer by Esri World Imagery; Maxar, Microsoft, Vivid

Appendix B – List of Poles to Remove

**Appendix B
69-kVA Poles To Be Removed**

69 Pole	Segment	Figure	Latitude	Longitude	Land Owner	Pole Decommission	Access	Access ID	Authorizations Required	Number of Poles	Conductors	Pole length (ft)	Est. buried depth	Height (Approx)	Notes
QK-74	Chugach National Forest	A-2	60.47674	-149.96768	Chugach National Forest	Cut flush at surface.	Access trail	RA7		1	Yes	55	7.5	47.5	Near Russian Lakes Trail & RA7.
QK-75	Chugach National Forest	A-2	60.476868	-149.970328	Chugach National Forest	Cut flush at surface.	Access trail	RA7		1	Yes	55	7.5	47.5	Near Russian Lakes Trail & RA7.
QK-76	Chugach National Forest	A-2	60.477013	-149.973213	Chugach National Forest	Cut flush at surface.	Access trail	RA7		1	Yes	55	7.5	47.5	Near Russian Lakes Trail & RA7.
QK-77	Kenai to Russian River Segment – MP 55.6 to Russian River	A-2	60.47722	-149.977164	KNWR	Cut flush at surface.	Helicopter/foot	HA2		1	Yes	55	7.5	47.5	
QK-78	Kenai to Russian River Segment – MP 55.6 to Russian River	A-2	60.477356	-149.979934	KNWR	Cut flush at surface.	Helicopter/foot	HA2		1	Yes	55	7.5	47.5	
QK-79	Kenai to Russian River Segment – MP 55.6 to Russian River	A-2	60.477513	-149.982933	KNWR	Cut flush at surface.	Helicopter/foot	HA2		1	Yes	55	7.5	47.5	
QK-80	Kenai to Russian River Segment – MP 55.6 to Russian River	A-2	60.477647	-149.985584	KNWR	Cut flush at surface.	Helicopter/foot	HA2		1	Yes	50	7	43	
QK-81	Kenai to Russian River Segment – MP 55.6 to Russian River	A-2	60.477788	-149.988417	KNWR	Cut flush at surface.	Helicopter/foot	HA2		1	Yes	50	7	43	
QK-82	Kenai to Russian River Segment – MP 55.6 to Russian River	A-2	60.477995	-149.992267	KNWR	Cut flush at surface.	Helicopter/foot	HA2		1	Yes	55	7.5	47.5	
QK-83	Kenai to Russian River Segment – MP 55.6 to Russian River	A-3	60.478144	-149.995368	KNWR	Cut flush at surface.	Helicopter/foot	HA2		1	Yes	50	7	43	
QK-84	Kenai to Russian River Segment – MP 55.6 to Russian River	A-3	60.478276	-149.998102	KNWR	Cut flush at surface.	Helicopter/foot	HA2		1	Yes	50	7	43	
QK-85	Kenai to Russian River Segment – MP 55.6 to Russian River	A-3	60.478446	-150.001388	KNWR	Cut flush at surface.	Helicopter/foot	HA2		1	Yes	50	7	43	
QK-86	Kenai to Russian River Segment – MP 55.6 to Russian River	A-3	60.478618	-150.004955	KNWR	Cut flush at surface.	Helicopter/foot	HA2		1	Yes	55	7.5	47.5	
QK-87	Kenai to Russian River Segment – MP 55.6 to Russian River	A-3	60.478774	-150.007992	KNWR	Cut flush at surface.	Helicopter/foot	HA2		1	Yes	60	8	52	
QK-88	Kenai to Russian River Segment – MP 55.6 to Russian River	A-3	60.479553	-150.009546	KNWR	Cut flush at surface.	Helicopter/foot	HA2		1	Yes	50	7	43	
QK-89	Kenai to Russian River Segment – MP 55.6 to Russian River	A-3	60.480453	-150.011355	KNWR	Cut flush at surface.	Helicopter/foot	HA2		1	Yes	50	7	43	
QK-90	Kenai to Russian River Segment – MP 55.6 to Russian River	A-3	60.481588	-150.013645	KNWR	Cut flush at surface.	Helicopter/foot	HA2		1	Yes	55	7.5	47.5	
QK-91	Kenai to Russian River Segment – MP 55.6 to Russian River	A-3	60.482798	-150.016074	KNWR	Cut flush at surface.	Helicopter/foot	HA2		1	Yes	55	7.5	47.5	
QK-92	Kenai to Russian River Segment – MP 55.6 to Russian River	A-3	60.48396	-150.018397	KNWR	Cut flush at surface.	Helicopter/foot	HA2		1	Yes	55	7.5	47.5	
QK-93	Kenai to Russian River Segment – MP 55.6 to Russian River	A-3	60.485209	-150.020913	KNWR	Cut flush at surface.	Helicopter/foot	HA2	KPB	1	Yes	55	7.5	47.5	Conductor crosses over Kenai River.
QK-94	Kenai to Russian River Segment – MP 55.6 to Russian River	A-3	60.48649	-150.023489	KNWR	Cut flush at surface.	Helicopter/foot	?	KPB	3	Yes	55	7.5	47.5	Conductor crosses over Kenai River.
QK-95	Fuller Creek Segment – MP58.3 to MP 55.6	A-3	60.488642	-150.027753	KNWR	Cut flush at surface.	Helicopter/foot	HA3	ADOT	2	Yes	60	8	52	Westerly pole. Conductor crosses over highway.
QK-96	Fuller Creek Segment – MP58.3 to MP 55.6	A-4	60.490188	-150.03085	KNWR	Cut flush at surface.	Helicopter/foot	HA3		1	Yes	70	9	61	
QK-97	Fuller Creek Segment – MP58.3 to MP 55.6	A-4	60.490129	-150.031614	KNWR	Cut flush at surface.	Helicopter/foot	HA3		1	Yes	50	7	43	
QK-98	Fuller Creek Segment – MP58.3 to MP 55.6	A-4	60.490001	-150.033617	KNWR	Cut flush at surface.	Helicopter/foot	HA3		1	Yes	45	6.5	38.5	
QK-99	Fuller Creek Segment – MP58.3 to MP 55.6	A-4	60.489726	-150.038233	KNWR	Cut flush at surface.	Helicopter/foot	HA3		2	Yes	50	7	43	
QK-100	Fuller Creek Segment – MP58.3 to MP 55.6	A-4	60.489275	-150.045345	KNWR	Cut flush at surface.	Helicopter/foot	HA3		2	Yes	55	7.5	47.5	
QK-101	Fuller Creek Segment – MP58.3 to MP 55.6	A-4	60.488957	-150.050291	KNWR	Cut flush at surface.	Helicopter/foot	HA3		2	Yes	45	6.5	38.5	
QK-102	Fuller Creek Segment – MP58.3 to MP 55.6	A-4	60.488683	-150.054686	KNWR	Cut flush at surface.	Helicopter/foot	HA3		2	Yes	50	7	43	
QK-103	Fuller Creek Segment – MP58.3 to MP 55.6	A-4	60.488319	-150.060421	KNWR	Cut flush at surface.	Helicopter/foot	HA3		3	Yes	40	6	34	
QK-104	Fuller Creek Segment – MP58.3 to MP 55.6	A-4/A-5	60.488964	-150.064383	KNWR	Cut flush at surface.	Helicopter/foot	HA3		1	Yes	45	6.5	38.5	
QK-105	Fuller Creek Segment – MP58.3 to MP 55.6	A-4/A-5	60.489186	-150.065743	KNWR	Cut flush at surface.	Helicopter/foot	HA3		1	Yes	55	7.5	47.5	
QK-106	Fuller Creek Segment – MP58.3 to MP 55.6	A-4/A-5	60.489171	-150.067922	KNWR	Cut flush at surface.	Helicopter/foot	HA3		1	Yes	55	7.5	47.5	
QK-107	Fuller Creek Segment – MP58.3 to MP 55.6	A-4/A-5	60.489082	-150.068812	KNWR	Cut flush at surface.	Helicopter/foot	HA3		1	Yes	45	6.5	38.5	
QK-108	Fuller Creek Segment – MP58.3 to MP 55.6	A-4/A-5	60.4888	-150.07185	KNWR	Cut flush at surface.	Helicopter/foot	HA3		1	Yes	45	6.5	38.5	Near Fuller Lake Trail. Trees may fall over line.
QK-109	Fuller Creek Segment – MP58.3 to MP 55.6	A-5	60.488553	-150.074442	KNWR	Cut flush at surface.	Helicopter/foot	HA3		1	Yes	40	6	34	Near Fuller Lake Trail. Trees may fall over line.
QK-110	Fuller Creek Segment – MP58.3 to MP 55.6	A-5	60.488445	-150.075539	KNWR	Cut flush at surface.	Helicopter/foot	HA3		?	?	50	7	43	Not visible in the aerial imagery
QK-111	Fuller Creek Segment – MP58.3 to MP 55.6	A-5	60.488281	-150.077276	KNWR	Cut flush at surface.	Helicopter/foot	HA4		1	Yes	60	8	52	Wilderness Area--Vehicles are expressly prohibited
QK-112	Fuller Creek Segment – MP58.3 to MP 55.6	A-5	60.488207	-150.079455	KNWR	Cut flush at surface.	Helicopter/foot	HA4		1	Yes	45	6.5	38.5	Wilderness Area--Vehicles are expressly prohibited
QK-113	Fuller Creek Segment – MP58.3 to MP 55.6	A-5	60.488135	-150.081253	KNWR	Cut flush at surface.	Helicopter/foot	HA4		1	Yes	40	6	34	Wilderness Area--Vehicles are expressly prohibited
QK-114	Fuller Creek Segment – MP58.3 to MP 55.6	A-5	60.488047	-150.083508	KNWR	Cut flush at surface.	Helicopter/foot	HA4		1	Yes	?	?	?	Wilderness Area--Vehicles are expressly prohibited
QK-115	Fuller Creek Segment – MP58.3 to MP 55.6	A-5	60.48785	-150.088903	KNWR	Cut flush at surface.	Helicopter/foot	HA4		2	Yes	55	7.5	47.5	Northern pole. Wilderness Area--Vehicles are expressly prohibited
QK-116	Fuller Creek Segment – MP58.3 to MP 55.6	A-5	60.487784	-150.090742	KNWR	Cut flush at surface.	Helicopter/foot	HA4		2	Yes	45	6.5	38.5	Wilderness Area--Vehicles are expressly prohibited
QK-117	Fuller Creek Segment – MP58.3 to MP 55.6	A-5	60.487576	-150.09617	KNWR	Remove pole butt/fill w clean rock.	Access trail	RA8		2	Yes	50	7	43	Northern pole. The unauthorized access trail. Short steep grades may prevent use of wheeled vehicles. No ground surface disturbance (grading, disking, plowing) is authorized. Erosion control materials must be replaced at end of work. Brush & small tree cutting may be required to access 69 kVA pole.

**Appendix B
69-kVA Poles To Be Removed**

69 Pole	Segment	Figure	Latitude	Longitude	Land Owner	Pole Decommission	Access	Access ID	Authorizations Required	Number of Poles	Conductors	Pole length (ft)	Est. buried depth	Height (Approx)	Notes
QK-118	Fuller Creek Segment – MP58.3 to MP 55.6	A-5	60.487527	-150.097458	KNWR	Remove pole butt/fill w clean rock.	Access trail	RA8		1	Yes	40	6	34	The unauthorized access trail. Short steep grades may prevent use of wheeled vehicles. No ground surface disturbance (grading, disking, plowing) is authorized. Erosion control materials must be replaced at end of work. Brush & small tree cutting may be required to access 69 kVA pole.
QK-119	Fuller Creek Segment – MP58.3 to MP 55.6	A-5	60.487438	-150.09966	KNWR	Remove pole butt/fill w clean rock.	Access trail	RA8		1	Yes	45	6.5	38.5	The unauthorized access trail. Short steep grades may prevent use of wheeled vehicles. No ground surface disturbance (grading, disking, plowing) is authorized. Erosion control materials must be replaced at end of work. Brush & small tree cutting may be required to access 69 kVA pole.
QK-120	Fuller Creek Segment – MP58.3 to MP 55.6	A-5	60.487288	-150.103328	KNWR	Remove pole butt/fill w clean rock.	Access trail	RA8		1	Yes	40	6	34	The unauthorized access trail. Short steep grades may prevent use of wheeled vehicles. No ground surface disturbance (grading, disking, plowing) is authorized. Erosion control materials must be replaced at end of work. Brush & small tree cutting may be required to access 69 kVA pole.
QK-121	Fuller Creek Segment – MP58.3 to MP 55.6	A-5	60.487248	-150.104302	KNWR	Remove pole butt/fill w clean rock.	Access trail	RA8		1	Yes	45	6.5	38.5	The unauthorized access trail. Short steep grades may prevent use of wheeled vehicles. No ground surface disturbance (grading, disking, plowing) is authorized. Erosion control materials must be replaced at end of work. Brush & small tree cutting may be required to access 69 kVA pole.
QK-122	Fuller Creek Segment – MP58.3 to MP 55.6	A-6	60.487067	-150.108766	KNWR	Remove pole butt/fill w clean rock.	Access trail	RA8		2	Yes	45	6.5	38.5	The unauthorized access trail. Short steep grades may prevent use of wheeled vehicles. No ground surface disturbance (grading, disking, plowing) is authorized. Erosion control materials must be replaced at end of work. Brush & small tree cutting may be required to access 69 kVA pole.
QK-123	Fuller Creek Segment – MP58.3 to MP 55.6	A-6	60.486912	-150.113061	KNWR	Remove pole butt/fill w clean rock.	Access trail	RA8		2	Yes	60	8	52	Northern pole. The unauthorized access trail. Short steep grades may prevent use of wheeled vehicles. No ground surface disturbance (grading, disking, plowing) is authorized. Erosion control materials must be replaced at end of work. Brush & small tree cutting may be required to access 69 kVA pole.
QK-124	Fuller Creek Segment – MP58.3 to MP 55.6	A-6	60.486752	-150.11721	KNWR	Remove pole butt/fill w clean rock.	Access trail	RA8		?	?	60	8	52	Southern Pole. The unauthorized access trail. Short steep grades may prevent use of wheeled vehicles. No ground surface disturbance (grading, disking, plowing) is authorized. Erosion control materials must be replaced at end of work. Brush & small tree cutting may be required to access 69 kVA pole.
QK-125	Fuller Creek Segment – MP58.3 to MP 55.6	A-6	60.486631	-150.12037	KNWR	Remove pole butt/fill w clean rock.	Access trail	RA8		2	No	55	7.5	47.5	The unauthorized access trail. Short steep grades may prevent use of wheeled vehicles. No ground surface disturbance (grading, disking, plowing) is authorized. Erosion control materials must be replaced at end of work. Brush & small tree cutting may be required to access 69 kVA pole.
QK-126	Jean Lake Segment - MP 62.4 to MP 58.3	A-6	60.486411	-150.125888	KNWR	Remove pole butt/fill w clean rock.	Access trail	RA8	KPB	?		60	8	52	Near Jean Creek. Need frozen soil/water.
QK-127	Jean Lake Segment - MP 62.4 to MP 58.3	A-6	60.486261	-150.129734	KNWR	Remove pole butt/fill w clean rock.	Access trail	RA8	KPB	1	Yes	55	7.5	47.5	Near Jean Creek. Need frozen soil/water.
QK-128	Jean Lake Segment - MP 62.4 to MP 58.3	A-6	60.486089	-150.133317	KNWR	Cut flush at surface.	Access trail	RA10		2	Yes	55	7.5	47.5	Unauthorized access trail. No ground surface disturbance (grading, disking, plowing) is authorized. Brush & small tree cutting may be required to access 69 kVA pole
QK-129	Jean Lake Segment - MP 62.4 to MP 58.3	A-6	60.485991	-150.136093	KNWR	Cut flush at surface.	Access trail	RA10		1	Yes	50	7	43	Unauthorized access trail. No ground surface disturbance (grading, disking, plowing) is authorized. Brush & small tree cutting may be required to access 69 kVA pole
QK-130	Jean Lake Segment - MP 62.4 to MP 58.3	A-6	60.485897	-150.138856	KNWR	Cut flush at surface.	Access trail	RA10		1	Yes	50	7	43	Unauthorized access trail. No ground surface disturbance (grading, disking, plowing) is authorized. Brush & small tree cutting may be required to access 69 kVA pole
QK-131	Jean Lake Segment - MP 62.4 to MP 58.3	A-6	60.485798	-150.141231	KNWR	Cut flush at surface.	Access trail	RA10		1	Yes	55	7.5	47.5	Unauthorized access trail. No ground surface disturbance (grading, disking, plowing) is authorized. Brush & small tree cutting may be required to access 69 kVA pole
QK-132	Jean Lake Segment - MP 62.4 to MP 58.3	A-6	60.486323	-150.143569	KNWR	Cut flush at surface.	Access trail	RA10		1	Yes	45	6.5	38.5	Unauthorized access trail. No ground surface disturbance (grading, disking, plowing) is authorized. Brush & small tree cutting may be required to access 69 kVA pole
QK-133	Jean Lake Segment - MP 62.4 to MP 58.3	A-6	60.486911	-150.146385	KNWR	Cut flush at surface.	Access trail	RA10		1	Yes	60	8	52	Unauthorized access trail. No ground surface disturbance (grading, disking, plowing) is authorized. Brush & small tree cutting may be required to access 69 kVA pole
QK-134	Jean Lake Segment - MP 62.4 to MP 58.3	A-6/A-7	60.48758	-150.149352	KNWR	Cut flush at surface.	Access trail	RA10		1	Yes	55	7.5	47.5	Unauthorized access trail. No ground surface disturbance (grading, disking, plowing) is authorized. Brush & small tree cutting may be required to access 69 kVA pole
QK-135	Jean Lake Segment - MP 62.4 to MP 58.3	A-7	60.488304	-150.152678	KNWR	Cut flush at surface.	Access trail	RA10		1	Yes	55	7.5	47.5	Unauthorized access trail. No ground surface disturbance (grading, disking, plowing) is authorized. Brush & small tree cutting may be required to access 69 kVA pole
QK-136	Jean Lake Segment - MP 62.4 to MP 58.3	A-7	60.488827	-150.154914	KNWR	Cut flush at surface.	Access trail	RA10		1	Yes	55	7.5	47.5	Unauthorized access trail. No ground surface disturbance (grading, disking, plowing) is authorized. Brush & small tree cutting may be required to access 69 kVA pole
QK-137	Jean Lake Segment - MP 62.4 to MP 58.3	A-7	60.489485	-150.157943	KNWR	Cut flush at surface.	Access trail	RA10		1	Yes	55	7.5	47.5	Unauthorized access trail. No ground surface disturbance (grading, disking, plowing) is authorized. Brush & small tree cutting may be required to access 69 kVA pole
QK-138	Jean Lake Segment - MP 62.4 to MP 58.3	A-7	60.490105	-150.160748	KNWR	Cut flush at surface.	Access trail	RA10		1	Yes	60	8	52	Unauthorized access trail. No ground surface disturbance (grading, disking, plowing) is authorized. Brush & small tree cutting may be required to access 69 kVA pole
QK-139	Jean Lake Segment - MP 62.4 to MP 58.3	A-7	60.491105	-150.163172	KNWR	Cut flush at surface.	Access trail	RA10		1	Yes	55	7.5	47.5	Unauthorized access trail. No ground surface disturbance (grading, disking, plowing) is authorized. Brush & small tree cutting may be required to access 69 kVA pole
QK-140	Jean Lake Segment - MP 62.4 to MP 58.3	A-7	60.492296	-150.166099	KNWR	Cut flush at surface.	Access trail	RA10		1	Yes	55	7.5	47.5	Unauthorized access trail. No ground surface disturbance (grading, disking, plowing) is authorized. Brush & small tree cutting may be required to access 69 kVA pole
QK-141	Jean Lake Segment - MP 62.4 to MP 58.3	A-7	60.49311	-150.168095	KNWR	Cut flush at surface.	Access trail	RA10		2	yes	60	8	52	Unauthorized access trail. No ground surface disturbance (grading, disking, plowing) is authorized. Brush & small tree cutting may be required to access 69 kVA pole
QK-142	Jean Lake Segment - MP 62.4 to MP 58.3	A-7	60.494409	-150.169455	KNWR	Cut flush at surface.	Access trail	RA10		1	Yes	50	7	43	Unauthorized access trail. No ground surface disturbance (grading, disking, plowing) is authorized. Brush & small tree cutting may be required to access 69 kVA pole
QK-143	Jean Lake Segment - MP 62.4 to MP 58.3	A-7	60.496217	-150.171344	KNWR	Cut flush at surface.	Access trail	RA10		1	Yes	70	9	61	Unauthorized access trail. No ground surface disturbance (grading, disking, plowing) is authorized. Brush & small tree cutting may be required to access 69 kVA pole

**Appendix B
69-kVA Poles To Be Removed**

69 Pole	Segment	Figure	Latitude	Longitude	Land Owner	Pole Decommission	Access	Access ID	Authorizations Required	Number of Poles	Conductors	Pole length (ft)	Est. buried depth	Height (Approx)	Notes
QK-144	Jean Lake Segment - MP 62.4 to MP 58.3	A-7	60.497771	-150.172939	KNWR	Cut flush at surface.	Access trail	RA10		1	Yes	60	8	52	Unauthorized access trail. No ground surface disturbance (grading, disking, plowing) is authorized. Brush & small tree cutting may be required to access 69 kVA pole
QK-145	Jean Lake Segment - MP 62.4 to MP 58.3	A-7	60.499346	-150.174609	KNWR	Cut flush at surface.	Access trail	RA10		2	Yes	55	7.5	47.5	Unauthorized access trail. No ground surface disturbance (grading, disking, plowing) is authorized. Brush & small tree cutting may be required to access 69 kVA pole
QK-146	Jean Lake Segment - MP 62.4 to MP 58.3	A-7	60.500911	-150.176259	KNWR	Cut flush at surface.	Access trail	RA10		1	Yes	50	7	43	Unauthorized access trail. No ground surface disturbance (grading, disking, plowing) is authorized. Brush & small tree cutting may be required to access 69 kVA pole
QK-147	Jean Lake Segment - MP 62.4 to MP 58.3	A-7	60.502007	-150.1774	KNWR	Cut flush at surface.	Access trail	RA10		1	Yes	50	7	43	Unauthorized access trail. No ground surface disturbance (grading, disking, plowing) is authorized. Brush & small tree cutting may be required to access 69 kVA pole
QK-148	Jean Lake Segment - MP 62.4 to MP 58.3	A-7	60.503307	-150.177401	KNWR	Cut flush at surface.	Access trail	RA10		1	Yes	60	8	52	Unauthorized access trail. No ground surface disturbance (grading, disking, plowing) is authorized. Brush & small tree cutting may be required to access 69 kVA pole
QK-149	Jean Lake Segment - MP 62.4 to MP 58.3	A-7	60.502736	-150.178136	KNWR	Cut flush at surface.	Access trail	RA10		1	Yes	60	8	52	Unauthorized access trail. No ground surface disturbance (grading, disking, plowing) is authorized. Brush & small tree cutting may be required to access 69 kVA pole
QK-150	Jean Lake Segment - MP 62.4 to MP 58.3	A-7/A-8	60.504523	-150.179493	KNWR	Cut flush at surface.	Access trail	RA10		1	Yes	55	7.5	47.5	Unauthorized access trail. No ground surface disturbance (grading, disking, plowing) is authorized. Brush & small tree cutting may be required to access 69 kVA pole
QK-151	Jean Lake Segment - MP 62.4 to MP 58.3	A-8	60.505355	-150.18093	KNWR	Cut flush at surface.	Access trail	RA10		1	Yes	65	8.5	56.5	Unauthorized access trail. No ground surface disturbance (grading, disking, plowing) is authorized. Brush & small tree cutting may be required to access 69 kVA pole
QK-152	Jean Lake Segment - MP 62.4 to MP 58.3	A-8	60.506687	-150.183234	KNWR	Cut flush at surface.	Access trail	RA10		1	Yes	45	6.5	38.5	Unauthorized access trail. No ground surface disturbance (grading, disking, plowing) is authorized. Brush & small tree cutting may be required to access 69 kVA pole
QK-153	Jean Lake Segment - MP 62.4 to MP 58.3	A-8	60.507356	-150.184392	KNWR	Cut flush at surface.	Access trail	RA10		1	Yes	50	7	43	Unauthorized access trail. No ground surface disturbance (grading, disking, plowing) is authorized. Brush & small tree cutting may be required to access 69 kVA pole
QK-154	Jean Lake Segment - MP 62.4 to MP 58.3	A-8	60.508607	-150.186539	KNWR	Cut flush at surface.	Access trail	RA10		1	Yes	50	7	43	Unauthorized access trail. No ground surface disturbance (grading, disking, plowing) is authorized. Brush & small tree cutting may be required to access 69 kVA pole
QK-155	Jean Lake Segment - MP 62.4 to MP 58.3	A-8	60.509504	-150.188064	KNWR	Cut flush at surface.	Access trail	RA10		1	Yes	60	8	52	Unauthorized access trail. No ground surface disturbance (grading, disking, plowing) is authorized. Brush & small tree cutting may be required to access 69 kVA pole
QK-156	Jean Lake Segment - MP 62.4 to MP 58.3	A-8	60.511046	-150.188788	KNWR	Cut flush at surface.	Access trail	RA10		1	Yes	50	7	43	Unauthorized access trail. No ground surface disturbance (grading, disking, plowing) is authorized. Brush & small tree cutting may be required to access 69 kVA pole
QK-157	Jean Lake Segment - MP 62.4 to MP 58.3	A-8	60.512992	-150.189659	KNWR	Cut flush at surface.	Access trail	RA10		1	Yes	50	7	43	Unauthorized access trail. No ground surface disturbance (grading, disking, plowing) is authorized. Brush & small tree cutting may be required to access 69 kVA pole
QK-158	Jean Lake Segment - MP 62.4 to MP 58.3	A-8	60.514419	-150.190282	KNWR	Remove pole butt/fill w clean rock.	Access trail	RA10		1	Yes	50	7	43	Brush & small tree cutting may be required.
QK-159	Jean Lake Segment - MP 62.4 to MP 58.3	A-8	60.514722	-150.191068	KNWR	Remove pole butt/fill w clean rock.	Access trail	RA10		?	?	65	8.5	56.5	Brush & small tree cutting may be required. Easterly pole
QK-160	Jean Lake Segment - MP 62.4 to MP 58.3	A-8	60.516789	-150.196405	KNWR	Remove pole butt/fill w clean rock.	Access trail	RA10		2	Yes	40	6	34	Brush & small tree cutting may be required.
QK-161	Jean Lake Segment - MP 62.4 to MP 58.3	A-8	60.518556	-150.20094	KNWR	Remove pole butt/fill w clean rock.	Access trail	RA10		2	Yes				Brush & small tree cutting may be required.
QK-162	Jean Lake Segment - MP 62.4 to MP 58.3	A-8	60.519602	-150.203658	KNWR	Remove pole butt/fill w clean rock.	Access trail	RA10		?	?	45			Brush & small tree cutting may be required. Easterly pole
QK-163	Jean Lake Segment - MP 62.4 to MP 58.3	A-9	60.521131	-150.207603	KNWR	Remove pole butt/fill w clean rock.	Access trail	RA10		?	?	65	8.5	56.5	Brush & small tree cutting may be required. Easterly pole
QK-164	Jean Lake Segment - MP 62.4 to MP 58.3	A-9	60.522102	-150.210109	KNWR	Remove pole butt/fill w clean rock.	Access trail	RA10		1	Yes	40	6	34	Brush & small tree cutting may be required.
QK-165	Jean Lake Segment - MP 62.4 to MP 58.3	A-9	60.522775	-150.211839	KNWR	Remove pole butt/fill w clean rock.	Access trail	RA10		1	Yes	50	7	43	Brush & small tree cutting may be required.
QK-166	Jean Lake Segment - MP 62.4 to MP 58.3	A-9	60.523665	-150.214144	KNWR	Remove pole butt/fill w clean rock.	Access trail	RA10		1	Yes	50	7	43	Brush & small tree cutting may be required.
QK-167	Sterling Highway Segment - MP 69 to MP 62.4	A-9	60.524272	-150.215723	KNWR	Remove pole butt/fill w clean rock.	Access trail	RA10		1	No	50	7	43	Line crosses road between QK-167 and QK-168--no conductor over road
QK-168	Sterling Highway Segment - MP 69 to MP 62.4	A-9	60.525014	-150.217617	KNWR	Remove pole butt/fill w clean rock.	Access trail	RA10		1	Yes	60	8	52	
QK-169	Sterling Highway Segment - MP 69 to MP 62.4	A-9	60.525558	-150.22039	KNWR	Remove pole butt/fill w clean rock.	Access trail	RA11		1	Yes	50	7	43	
QK-170	Sterling Highway Segment - MP 69 to MP 62.4	A-9	60.526038	-150.222781	KNWR	Remove pole butt/fill w clean rock.	Access trail	RA11		1	Yes	50	7	43	
QK-171	Sterling Highway Segment - MP 69 to MP 62.4	A-9	60.526556	-150.225392	KNWR	Remove pole butt/fill w clean rock.	Access trail	RA11		1	Yes	50	7	43	
QK-172	Sterling Highway Segment - MP 69 to MP 62.4	A-9	60.527087	-150.228062	KNWR	Remove pole butt/fill w clean rock.	Access trail	RA11		1	Yes	50	7	43	
QK-173	Sterling Highway Segment - MP 69 to MP 62.4	A-9	60.527616	-150.230721	KNWR	Remove pole butt/fill w clean rock.	Access trail	RA11		1	Yes	50	7	43	
QK-174	Sterling Highway Segment - MP 69 to MP 62.4	A-9	60.528047	-150.232857	KNWR	Remove pole butt/fill w clean rock.	Access trail	RA12		1	Yes	60	8	52	
QK-175	Sterling Highway Segment - MP 69 to MP 62.4	A-9	60.527927	-150.235608	KNWR	Remove pole butt/fill w clean rock.	Access trail	RA12		1	Yes	50	7	43	
QK-176	Sterling Highway Segment - MP 69 to MP 62.4	A-9	60.527826	-150.238044	KNWR	Remove pole butt/fill w clean rock.	Access trail	RA12		1	Yes	50	7	43	
QK-177	Sterling Highway Segment - MP 69 to MP 62.4	A-9	60.527664	-150.24183	KNWR	Remove pole butt/fill w clean rock.	Access trail	RA12		1	Yes	55	7.5	47.5	Conductor cross a small road
QK-178	Sterling Highway Segment - MP 69 to MP 62.4	A-9/A-10	60.527526	-150.245011	KNWR	Remove pole butt/fill w clean rock.	Access trail	RA12		1	Yes	55	7.5	47.5	
QK-179	Sterling Highway Segment - MP 69 to MP 62.4	A-9/A-10	60.527392	-150.248302	KNWR	Remove pole butt/fill w clean rock.	Access trail	RA13		1	Yes	40	6	34	
QK-180	Sterling Highway Segment - MP 69 to MP 62.4	A-10	60.527311	-150.250202	KNWR	Remove pole butt/fill w clean rock.	Access trail	RA13		1	Yes	40	6	34	
QK-181	Sterling Highway Segment - MP 69 to MP 62.4	A-10	60.527211	-150.252633	KNWR	Remove pole butt/fill w clean rock.	Access trail	RA13		1	Yes	60	8	52	
QK-182	Sterling Highway Segment - MP 69 to MP 62.4	A-10	60.527096	-150.255202	KNWR	Remove pole butt/fill w clean rock.	Access trail	RA13		1	Yes	65	8.5	56.5	

**Appendix B
69-kVA Poles To Be Removed**

69 Pole	Segment	Figure	Latitude	Longitude	Land Owner	Pole Decommission	Access	Access ID	Authorizations Required	Number of Poles	Conductors	Pole length (ft)	Est. buried depth	Height (Approx)	Notes
QK-183	Sterling Highway Segment - MP 69 to MP 62.4	A-10	60.526968	-150.258366	KNWR	Remove pole butt/fill w clean rock.	Access trail	RA13		1	Yes	55	7.5	47.5	
QK-184	Sterling Highway Segment - MP 69 to MP 62.4	A-10	60.526224	-150.26084	KNWR	Remove pole butt/fill w clean rock.	Access trail	RA13		1	Yes	45	6.5	38.5	
QK-185	Sterling Highway Segment - MP 69 to MP 62.4	A-10	60.525727	-150.2625	KNWR	Remove pole butt/fill w clean rock.	Access trail	RA13		1	Yes	40	6	34	
QK-186	Sterling Highway Segment - MP 69 to MP 62.4	A-10	60.524683	-150.265991	KNWR	Remove pole butt/fill w clean rock.	Access trail	RA14		1	Yes	45	6.5	38.5	Conductor ends at QK-186. Next two poles already removed.
QK-189	Sterling Highway Segment - MP 69 to MP 62.4	A-10	60.523671	-150.273244	KNWR	Remove pole butt/fill w clean rock.	Access trail	RA14		1	Yes	50	7	43	
QK-190	Sterling Highway Segment - MP 69 to MP 62.4	A-10	60.523745	-150.274512	KNWR	Remove pole butt/fill w clean rock.	Access trail	RA14		1	Yes	45	6.5	38.5	
QK-191	Sterling Highway Segment - MP 69 to MP 62.4	A-10	60.52386	-150.276451	KNWR	Remove pole butt/fill w clean rock.	Access trail	RA14		1	Yes	50	7	43	
QK-192	Sterling Highway Segment - MP 69 to MP 62.4	A-10	60.524103	-150.280639	KNWR	Remove pole butt/fill w clean rock.	Access trail	RA14		1	Yes	50	7	43	
QK-193	Sterling Highway Segment - MP 69 to MP 62.4	A-10	60.524326	-150.284356	KNWR	Remove pole butt/fill w clean rock.	Access trail	RA15		1	Yes	50	7	43	
QK-194	Sterling Highway Segment - MP 69 to MP 62.4	A-11	60.52456	-150.28845	KNWR	Remove pole butt/fill w clean rock.	Access trail	RA15		1	Yes	50	7	43	
QK-195	Sterling Highway Segment - MP 69 to MP 62.4	A-11	60.524741	-150.291567	KNWR	Remove pole butt/fill w clean rock.	Access trail	RA15		1	Yes	50	7	43	
QK-196	Sterling Highway Segment - MP 69 to MP 62.4	A-11	60.524899	-150.294225	KNWR	Remove pole butt/fill w clean rock.	Access trail	RA15		1	Yes	50	7	43	
QK-197	Sterling Highway Segment - MP 69 to MP 62.4	A-11	60.525063	-150.297075	KNWR	Remove pole butt/fill w clean rock.	Access trail	RA15		1	Yes	50	7	43	
QK-198	Sterling Highway Segment - MP 69 to MP 62.4	A-11	60.525224	-150.299835	KNWR	Remove pole butt/fill w clean rock.	Access trail	RA15		1	Yes	50	7	43	
QK-199	Sterling Highway Segment - MP 69 to MP 62.4	A-11	60.525372	-150.302347	KNWR	Remove pole butt/fill w clean rock.	Access trail	RA15		1	Yes	50	7	43	
QK-200	Sterling Highway Segment - MP 69 to MP 62.4	A-11	60.525564	-150.305607	KNWR	Remove pole butt/fill w clean rock.	Access trail	RA15		1	Yes	50	7	43	
QK-201	Sterling Highway Segment - MP 69 to MP 62.4	A-11	60.525686	-150.307819	KNWR	Remove pole butt/fill w clean rock.	Access trail	RA15		1	Yes	50	7	43	
QK-202	Sterling Highway Segment - MP 69 to MP 62.4	A-11	60.52587	-150.310899	KNWR	Remove pole butt/fill w clean rock.	Access trail	RA15		1	Yes	50	7	43	
QK-203	Sterling Highway Segment - MP 69 to MP 62.4	A-11	60.526032	-150.313735	KNWR	Remove pole butt/fill w clean rock.	Access trail	RA15		1	Yes	50	7	43	
QK-204	Sterling Highway Segment - MP 69 to MP 62.4	A-11	60.526212	-150.316779	KNWR	Remove pole butt/fill w clean rock.	Access trail	RA15		1	Yes	50	7	43	
QK-205	Sterling Highway Segment - MP 69 to MP 62.4	A-11	60.526392	-150.319875	KNWR	Remove pole butt/fill w clean rock.	Access trail	RA15		1	Yes	50	7	43	
QK-206	Sterling Highway Segment - MP 69 to MP 62.4	A-11	60.526571	-150.322962	KNWR	Remove pole butt/fill w clean rock.	Access trail	RA15		1	Yes	50	7	43	
QK-207	Sterling Highway Segment - MP 69 to MP 62.4	A-11	60.526722	-150.32554	KNWR	Remove pole butt/fill w clean rock.	Access trail	RA15		1	Yes	50	7	43	
QK-208	Sterling Highway Segment - MP 69 to MP 62.4	A-11	60.526865	-150.328098	KNWR	Remove pole butt/fill w clean rock.	Access trail	RA15		1	Yes	50	7	43	
QK-209	Sterling Highway Segment - MP 69 to MP 62.4	A-12	60.527092	-150.331993	KNWR	Remove pole butt/fill w clean rock.	Access trail	RA15		1	Yes	55	7.5	47.5	
QK-210	Sterling Highway Segment - MP 69 to MP 62.4	A-12	60.527284	-150.335296	KNWR	Remove pole butt/fill w clean rock.	Access trail	RA15		1	Yes	50	7	43	
QK-211	Sterling Highway Segment - MP 69 to MP 62.4	A-12	60.527488	-150.338771	KNWR	Remove pole butt/fill w clean rock.	Access trail	RA15		1	Yes	40	6	34	
QK-212	Sterling Highway Segment - MP 69 to MP 62.4	A-12	60.527703	-150.34239	KNWR	Remove pole butt/fill w clean rock.	Access trail	RA15	Wetland?	1	Yes	55	7.5	47.5	Surrounded by standing water. Wetland?
QK-213	Sterling Highway Segment - MP 69 to MP 62.4	A-12	60.527926	-150.346308	KNWR	Remove pole butt/fill w clean rock.	Access trail	RA15		1	Yes	45	6.5	38.5	
QK-214	Sterling Highway Segment - MP 69 to MP 62.4	A-12	60.52803	-150.348125	KNWR	Remove pole butt/fill w clean rock.	Access trail	RA15		1	Yes	45	6.5	38.5	
QK-215	Sterling Highway Segment - MP 69 to MP 62.4	A-12	60.528166	-150.350493	KNWR	Remove pole butt/fill w clean rock.	Access trail	RA15		1	Yes	45	6.5	38.5	
QK-216	Sterling Highway Segment - MP 69 to MP 62.4	A-12	60.528325	-150.353237	KNWR	Remove pole butt/fill w clean rock.	Access trail	RA15		1	Yes	40	6	34	
QK-217	Sterling Highway Segment - MP 69 to MP 62.4	A-12	60.528545	-150.356989	KNWR	Remove pole butt/fill w clean rock.	Access trail	RA15	Wetland?	1	Yes	50	7	43	Image shows as wetland but recon shows dry ground.
QK-218	Sterling Highway Segment - MP 69 to MP 62.4	A-12	60.528686	-150.359453	KNWR	Remove pole butt/fill w clean rock.	Access trail	RA15		1	Yes	45	6.5	38.5	
QK-219	Sterling Highway Segment - MP 69 to MP 62.4	A-12	60.528886	-150.362887	KNWR	Remove pole butt/fill w clean rock.	Access trail	RA15		1	Yes	50	7	43	
QK-220	Sterling Highway Segment - MP 69 to MP 62.4	A-12	60.529056	-150.365862	KNWR	Remove pole butt/fill w clean rock.	Access trail	RA16		1	Yes	50	7	43	
QK-221	Sterling Highway Segment - MP 69 to MP 62.4	A-12	60.529209	-150.368501	KNWR	Remove pole butt/fill w clean rock.	Access trail	RA16		1	Yes	50	7	43	
QK-222	Sterling Highway Segment - MP 69 to MP 62.4	A-12	60.529382	-150.371484	KNWR	Remove pole butt/fill w clean rock.	Access trail	RA16		1	Yes	50	7	43	
QK-223	Sterling Highway Segment - MP 69 to MP 62.4	A-13	60.52957	-150.374727	KNWR	Remove pole butt/fill w clean rock.	Access trail	RA16		1	Yes	50	7	43	
QK-224	Sterling Highway Segment - MP 69 to MP 62.4	A-13	60.529696	-150.376926	KNWR	Remove pole butt/fill w clean rock.	Access trail	RA16		1	Yes	50	7	43	
QK-225	Sterling Highway Segment - MP 69 to MP 62.4	A-13	60.529783	-150.378528	KNWR	Remove pole butt/fill w clean rock.	Access trail	RA16		1	Yes	55	7.5	47.5	
QK-226	Sterling Highway Segment - MP 69 to MP 62.4	A-13	60.529984	-150.3802	KNWR	Remove pole butt/fill w clean rock.	Access trail	RA16		1	Yes	60	8	52	
QK-227	Sterling Highway Segment - MP 69 to MP 62.4	A-13	60.530417	-150.383925	KNWR	Remove pole butt/fill w clean rock.	Access trail	RA16		1	Yes	45	6.5	38.5	
QK-228	Sterling Highway Segment - MP 69 to MP 62.4	A-13	60.530559	-150.385161	KNWR	Remove pole butt/fill w clean rock.	Access trail	RA16		1	Yes	45	6.5	38.5	
QK-229	Sterling Highway Segment - MP 69 to MP 62.4	A-13	60.530922	-150.388285	KNWR	Remove pole butt/fill w clean rock.	Access trail	RA16		1	Yes	60	8	52	
QK-230	Sterling Highway Segment - MP 69 to MP 62.4	A-13	60.531362	-150.392065	KNWR	Remove pole butt/fill w clean rock.	Access trail	RA16		1	Yes	50	7	43	

**Appendix B
69-kVA Poles To Be Removed**

69 Pole	Segment	Figure	Latitude	Longitude	Land Owner	Pole Decommission	Access	Access ID	Authorizations Required	Number of Poles	Conductors	Pole length (ft)	Est. buried depth	Height (Approx)	Notes
QK-231	Sterling Highway Segment - MP 69 to MP 62.4	A-13	60.53165	-150.394549	KNWR	Remove pole butt/fill w clean rock.	Access trail	RA16		1	Yes	50	7	43	
QK-232	Sterling Highway Segment - MP 69 to MP 62.4	A-13	60.531976	-150.397356	KNWR	Remove pole butt/fill w clean rock.	Access trail	RA16		1	Yes	50	7	43	